

Acta Crystallographica Section E

## Structure Reports

Online

ISSN 1600-5368

# catena-Poly[[[3-(2-pyridyl)-1H-pyrazole]manganese(II)]- $\mu$ -oxalato]sesquihydrate]

Zhe An\* and Ling Zhu

School of Chemistry and Life Science, Maoming University, Maoming 525000, People's Republic of China

Correspondence e-mail: anz\_md@163.com

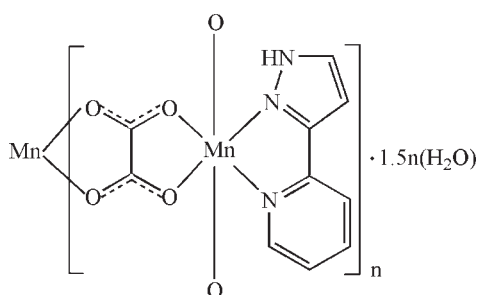
Received 20 October 2009; accepted 24 October 2009

Key indicators: single-crystal X-ray study;  $T = 296$  K; mean  $\sigma(\text{C}-\text{C}) = 0.009$  Å;  $R$  factor = 0.027;  $wR$  factor = 0.078; data-to-parameter ratio = 13.1.

In the title compound,  $\{[\text{Mn}(\text{C}_2\text{O}_4)(\text{C}_8\text{H}_7\text{N}_3)] \cdot 1.5\text{H}_2\text{O}\}_n$ , the  $\text{Mn}^{\text{II}}$  ion is chelated by two  $O, O'$ -bidentate oxalate ions and an  $N, N'$ -bidentate 3-(2-pyridyl)pyrazole molecule, resulting in a distorted  $\text{cis-MnN}_2\text{O}_4$  octahedral geometry for the metal ion. The bridging oxalate ions generate wave-like polymeric chains propagating in  $[001]$ . The packing is consolidated by  $\text{N}-\text{H} \cdots \text{O}$  and  $\text{O}-\text{H} \cdots \text{O}$  hydrogen bonds. One of the water O atoms lies on a crystallographic twofold axis.

## Related literature

For coordination compounds with pyridyl-pyrazolide ligands, see: Ward *et al.* (1998, 2001).



## Experimental

## Crystal data

$[\text{Mn}(\text{C}_2\text{O}_4)(\text{C}_8\text{H}_7\text{N}_3)] \cdot 1.5\text{H}_2\text{O}$   
 $M_r = 315.15$   
 Monoclinic,  $C2/c$   
 $a = 29.460$  (8) Å  
 $b = 9.236$  (3) Å  
 $c = 9.875$  (3) Å  
 $\beta = 102.706$  (5)°

$V = 2621.0$  (13) Å<sup>3</sup>  
 $Z = 8$   
 Mo  $K\alpha$  radiation  
 $\mu = 1.03$  mm<sup>-1</sup>  
 $T = 296$  K  
 $0.43 \times 0.28 \times 0.22$  mm

## Data collection

Bruker SMART APEX CCD diffractometer  
 Absorption correction: multi-scan (SADABS; Bruker, 2005)  
 $T_{\text{min}} = 0.665$ ,  $T_{\text{max}} = 0.805$

6809 measured reflections  
 2438 independent reflections  
 2004 reflections with  $I > 2\sigma(I)$   
 $R_{\text{int}} = 0.020$

## Refinement

$R[F^2 > 2\sigma(F^2)] = 0.027$   
 $wR(F^2) = 0.078$   
 $S = 1.00$   
 2438 reflections  
 186 parameters

H atoms treated by a mixture of independent and constrained refinement  
 $\Delta\rho_{\text{max}} = 0.22$  e Å<sup>-3</sup>  
 $\Delta\rho_{\text{min}} = -0.17$  e Å<sup>-3</sup>

Table 1

Selected geometric parameters (Å, °).

Mn1—N1	2.280 (4)	Mn1—O2	2.168 (3)
Mn1—N2	2.223 (4)	Mn1—O1	2.191 (4)
Mn1—O4 <sup>i</sup>	2.150 (3)	Mn1—O3 <sup>i</sup>	2.208 (3)

N2—Mn1—N1 73.01 (16)

Symmetry code: (i)  $x, -y, z - \frac{1}{2}$ .

Table 2

Hydrogen-bond geometry (Å, °).

$D-\text{H} \cdots A$	$D-\text{H}$	$\text{H} \cdots A$	$D \cdots A$	$D-\text{H} \cdots A$
N3—H3A <sup>ii</sup> ···O1W	0.86	1.89	2.748 (7)	175
O1W—H1W <sup>ii</sup> ···O1 <sup>ii</sup>	0.83 (5)	2.08 (4)	2.851 (6)	155 (6)
O1W—H2W <sup>iii</sup> ···O2W <sup>iii</sup>	0.82 (4)	2.10 (5)	2.819 (6)	148 (6)
O2W—H3W <sup>iv</sup> ···O3 <sup>iv</sup>	0.82 (5)	2.06 (4)	2.823 (4)	156 (6)

Symmetry codes: (ii)  $-x + 1, y, -z + \frac{1}{2}$ ; (iii)  $-x + 1, -y + 1, -z$ ; (iv)  $x, -y + 1, z - \frac{1}{2}$ .

Data collection: **SMART or APEX2?** (Bruker, 2005); cell refinement: **SAINT** (Bruker, 2005); data reduction: **SAINT**; program(s) used to solve structure: **SHELXS97** (Sheldrick, 2008); program(s) used to refine structure: **SHELXL97** (Sheldrick, 2008); molecular graphics: **SHELXTL** (Sheldrick, 2008); software used to prepare material for publication: **SHELXL97**.

The authors acknowledge financial support from the program for talent introduction in Guangdong Higher Education Institutions and the scientific research start-up funds of talent introduction in Maoming University.

Supplementary data and figures for this paper are available from the IUCr electronic archives (Reference: HB5162).

## References

- Bruker (2005). *SMART, SAINT and SADABS*. Bruker AXS Inc., Madison, Wisconsin, USA.  
 Sheldrick, G. M. (2008). *Acta Cryst.* **A64**, 112–122.  
 Ward, M. D., Fleming, J. S., Psillakis, E., Jeffery, J. C. & McCleverty, J. A. (1998). *Acta Cryst.* **C54**, 609–612.  
 Ward, M. D., McCleverty, J. A. & Jeffery, J. C. (2001). *Coord. Chem. Rev.* **222**, 251–272.

## supporting information

*Acta Cryst.* (2009). E65, m1480 [https://doi.org/10.1107/S1600536809044298]

**catena-Poly[[[3-(2-pyridyl)-1H-pyrazole]manganese(II)]- $\mu$ -oxalato] sesquihydrate]**

**Zhe An and Ling Zhu**

**S1. Comment**

The tridentate ligand 3-(2-pyridyl)pyrazole and its derivatives have been used widely in the construction of supramolecular architectures by way of metal-organic coordination (Ward, Fleming *et al.* 1998; Ward, 2001).

As a continuation of these studies, we now report the crystal structure of the title complex, (I).

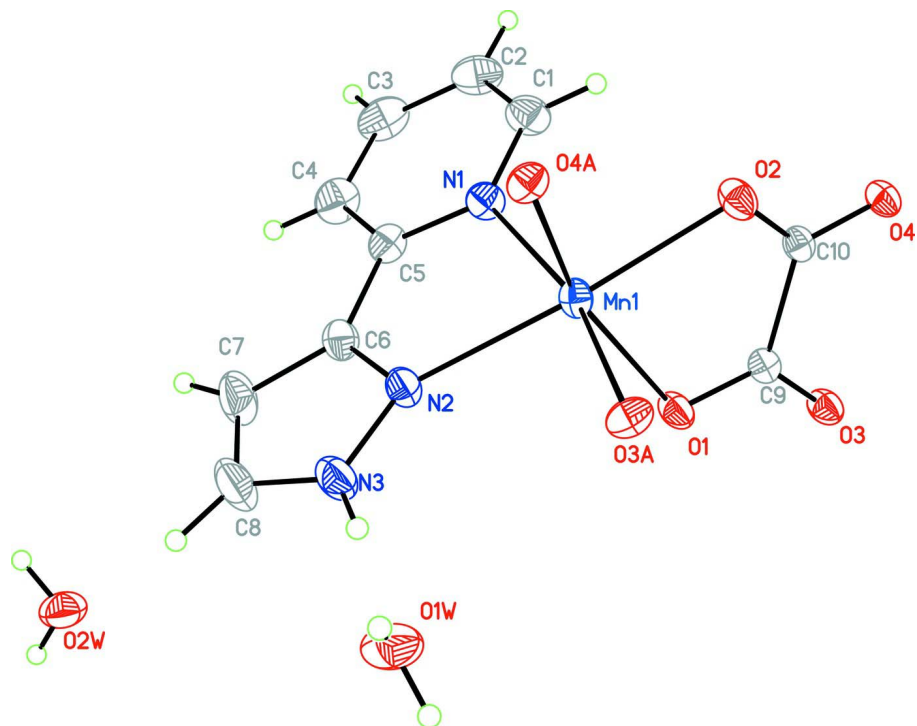
The Mn ion is hexacoordinated, chelated by two oxalate and one 3-(2-pyridyl)pyrazole ligand (Table 1). While each oxalate ligand acts as one bridge to chelate two Mn ions, forming one wave-like line with Mn...Mn distance being 5.652 Å, shown in Figure 2. The structure is consolidated by N—H...O and O—H...O hydrogen bonds (Table 2, Figure 3).

**S2. Experimental**

A mixture of Mn(CH<sub>3</sub>COO)<sub>2</sub>·4H<sub>2</sub>O (1 mmol), 3-(2-pyridyl)pyrazole (1 mmol), oxalic acid (1 mmol), sodium hydroxide (1 mmol) and H<sub>2</sub>O (10 ml) was stirred for 30 min in air. The mixture was then transferred to a 25 ml Teflon-lined hydrothermal bomb. The bomb was kept at 433 K for 72 h under autogenous pressure. Upon cooling, pink prisms of (I) were obtained from the reaction mixture.

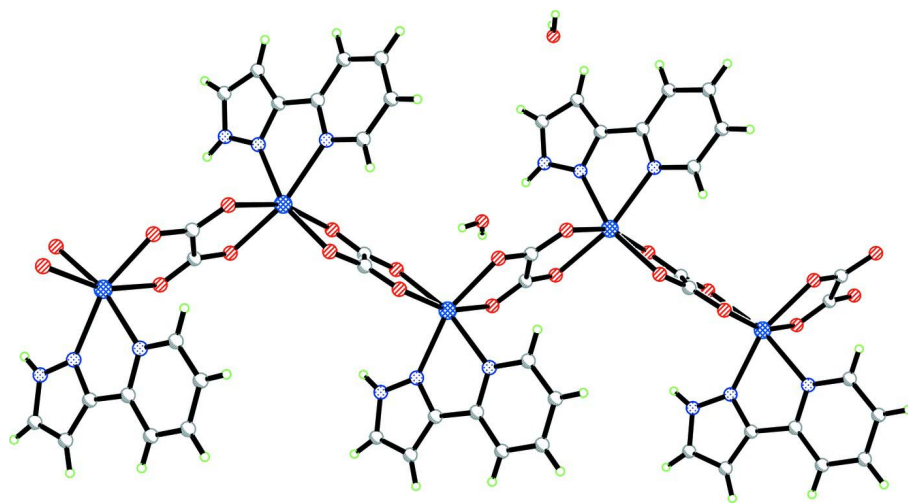
**S3. Refinement**

The C-bound H atoms were geometrically placed (C—H = 0.93 Å) and refined as riding with  $U_{iso} = 1.2U_{eq}(C)$ . The N- and O-bound H atoms were located in difference maps and refined with distance restraints: N—H = 0.97 (1) Å, O—H = 0.82 (2) Å, H...H = 1.38 (2) Å.



**Figure 1**

A view of (I) with the unique-atom labelling scheme. Displacement ellipsoids are drawn at the 30% probability level.



**Figure 2**

A view of (I) showing the extended chain structure.

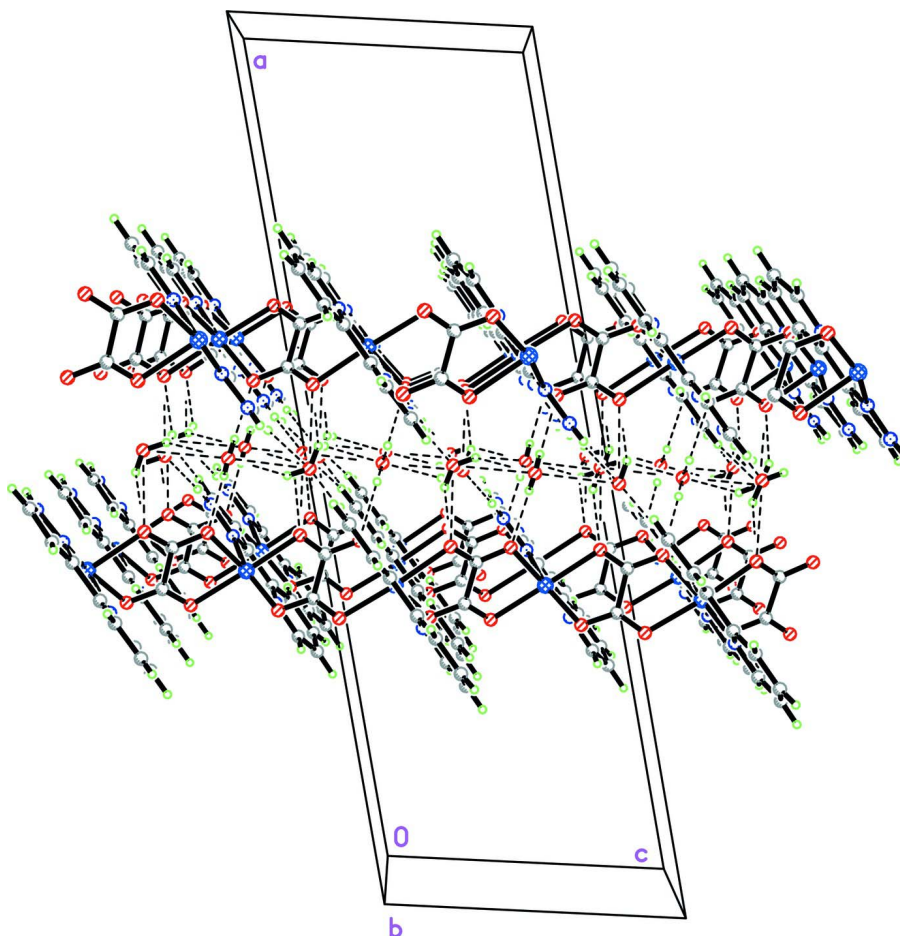


Figure 3

A view of (I) showing the packing.

*catena*-Poly[[[[[3-(2-pyridyl)-1*H*-pyrazole]manganese(II)]- $\mu$ -oxalato] sesquihydrate]

*Crystal data*

$[\text{Mn}(\text{C}_2\text{O}_4)(\text{C}_8\text{H}_7\text{N}_3)] \cdot 1.5\text{H}_2\text{O}$

$M_r = 315.15$

Monoclinic,  $C2/c$

Hall symbol:  $-C\ 2yc$

$a = 29.460\ (8)\ \text{\AA}$

$b = 9.236\ (3)\ \text{\AA}$

$c = 9.875\ (3)\ \text{\AA}$

$\beta = 102.706\ (5)^\circ$

$V = 2621.0\ (13)\ \text{\AA}^3$

$Z = 8$

$F(000) = 1280$

$D_x = 1.597\ \text{Mg m}^{-3}$

Mo  $K\alpha$  radiation,  $\lambda = 0.71073\ \text{\AA}$

Cell parameters from 2634 reflections

$\theta = 2.8\text{--}25.4^\circ$

$\mu = 1.03\ \text{mm}^{-1}$

$T = 296\ \text{K}$

Block, pink

$0.43 \times 0.28 \times 0.22\ \text{mm}$

*Data collection*

Bruker APEXII CCD  
diffractometer

Radiation source: fine-focus sealed tube

Graphite monochromator

$\varphi$  and  $\omega$  scans

Absorption correction: multi-scan  
(*SADABS*; Bruker, 2005)

$T_{\min} = 0.665$ ,  $T_{\max} = 0.805$

6809 measured reflections

2438 independent reflections

2004 reflections with  $I > 2\sigma(I)$

$R_{\text{int}} = 0.020$   
 $\theta_{\text{max}} = 25.5^\circ$ ,  $\theta_{\text{min}} = 2.3^\circ$   
 $h = -35 \rightarrow 35$

$k = -10 \rightarrow 11$   
 $l = -9 \rightarrow 11$

### Refinement

Refinement on  $F^2$   
 Least-squares matrix: full  
 $R[F^2 > 2\sigma(F^2)] = 0.027$   
 $wR(F^2) = 0.078$   
 $S = 1.00$   
 2438 reflections  
 186 parameters  
 0 restraints  
 Primary atom site location: structure-invariant  
 direct methods

Secondary atom site location: difference Fourier  
 map  
 Hydrogen site location: inferred from  
 neighbouring sites  
 H atoms treated by a mixture of independent  
 and constrained refinement  
 $w = 1/[\sigma^2(F_o^2) + (0.045P)^2 + 0.7224P]$   
 where  $P = (F_o^2 + 2F_c^2)/3$   
 $(\Delta/\sigma)_{\text{max}} = 0.001$   
 $\Delta\rho_{\text{max}} = 0.22 \text{ e } \text{\AA}^{-3}$   
 $\Delta\rho_{\text{min}} = -0.17 \text{ e } \text{\AA}^{-3}$

### Special details

**Geometry.** All e.s.d.'s (except the e.s.d. in the dihedral angle between two l.s. planes) are estimated using the full covariance matrix. The cell e.s.d.'s are taken into account individually in the estimation of e.s.d.'s in distances, angles and torsion angles; correlations between e.s.d.'s in cell parameters are only used when they are defined by crystal symmetry. An approximate (isotropic) treatment of cell e.s.d.'s is used for estimating e.s.d.'s involving l.s. planes.

**Refinement.** Refinement of  $F^2$  against ALL reflections. The weighted  $R$ -factor  $wR$  and goodness of fit  $S$  are based on  $F^2$ , conventional  $R$ -factors  $R$  are based on  $F$ , with  $F$  set to zero for negative  $F^2$ . The threshold expression of  $F^2 > \sigma(F^2)$  is used only for calculating  $R$ -factors(gt) *etc.* and is not relevant to the choice of reflections for refinement.  $R$ -factors based on  $F^2$  are statistically about twice as large as those based on  $F$ , and  $R$ -factors based on ALL data will be even larger.

### Fractional atomic coordinates and isotropic or equivalent isotropic displacement parameters ( $\text{\AA}^2$ )

	$x$	$y$	$z$	$U_{\text{iso}}^*/U_{\text{eq}}$
C1	0.2903 (2)	0.3204 (7)	0.3530 (6)	0.0620 (16)
H1	0.2780	0.2284	0.3594	0.074*
C2	0.2697 (2)	0.4365 (8)	0.4029 (7)	0.0732 (19)
H2	0.2441	0.4229	0.4423	0.088*
C3	0.2872 (2)	0.5721 (8)	0.3938 (7)	0.077 (2)
H3	0.2740	0.6518	0.4279	0.092*
C4	0.3246 (2)	0.5889 (7)	0.3340 (7)	0.0685 (17)
H4	0.3367	0.6806	0.3257	0.082*
C5	0.34421 (19)	0.4681 (6)	0.2858 (5)	0.0483 (13)
C6	0.3844 (2)	0.4772 (6)	0.2209 (6)	0.0506 (13)
C7	0.4082 (3)	0.5950 (7)	0.1822 (8)	0.079 (2)
H7	0.4024	0.6926	0.1940	0.095*
C8	0.4416 (3)	0.5372 (7)	0.1235 (8)	0.085 (2)
H8	0.4632	0.5886	0.0868	0.102*
C9	0.39499 (16)	0.0253 (5)	0.5065 (5)	0.0374 (11)
C10	0.34569 (16)	-0.0362 (5)	0.4432 (5)	0.0367 (11)
N1	0.32730 (15)	0.3343 (5)	0.2955 (5)	0.0472 (11)
N2	0.40299 (15)	0.3533 (4)	0.1877 (5)	0.0470 (11)
N3	0.43793 (17)	0.3939 (6)	0.1279 (5)	0.0628 (13)
H3A	0.4556	0.3346	0.0965	0.075*
Mn1	0.36805 (2)	0.14892 (8)	0.22637 (7)	0.0395 (3)

O1	0.41292 (12)	0.1050 (4)	0.4304 (4)	0.0476 (9)
O2	0.32916 (13)	-0.0076 (4)	0.3189 (4)	0.0514 (9)
O3	0.41261 (12)	-0.0083 (4)	0.6295 (3)	0.0477 (9)
O4	0.32667 (11)	-0.1102 (4)	0.5215 (3)	0.0433 (8)
O1W	0.49441 (17)	0.2150 (6)	0.0153 (6)	0.0849 (14)
O2W	0.5000	0.8860 (7)	0.2500	0.0754 (19)
H1W	0.5197 (14)	0.181 (7)	0.056 (5)	0.080*
H2W	0.485 (2)	0.183 (7)	-0.063 (4)	0.080*
H3W	0.4792 (17)	0.944 (6)	0.222 (7)	0.080*

*Atomic displacement parameters (Å<sup>2</sup>)*

	$U^{11}$	$U^{22}$	$U^{33}$	$U^{12}$	$U^{13}$	$U^{23}$
C1	0.055 (3)	0.068 (4)	0.070 (4)	0.001 (3)	0.027 (3)	-0.007 (3)
C2	0.054 (4)	0.092 (5)	0.080 (5)	0.015 (4)	0.028 (3)	-0.012 (4)
C3	0.074 (4)	0.079 (5)	0.078 (5)	0.028 (4)	0.019 (4)	-0.021 (4)
C4	0.079 (4)	0.049 (3)	0.076 (4)	0.008 (3)	0.016 (4)	-0.018 (3)
C5	0.054 (3)	0.043 (3)	0.046 (3)	0.004 (2)	0.007 (2)	-0.007 (2)
C6	0.057 (3)	0.040 (3)	0.055 (3)	-0.003 (2)	0.012 (3)	-0.002 (2)
C7	0.101 (5)	0.041 (3)	0.104 (6)	-0.009 (3)	0.039 (5)	0.007 (3)
C8	0.091 (5)	0.065 (4)	0.112 (6)	-0.022 (4)	0.047 (5)	0.013 (4)
C9	0.042 (3)	0.035 (3)	0.037 (3)	-0.002 (2)	0.013 (2)	-0.003 (2)
C10	0.043 (3)	0.032 (2)	0.038 (3)	-0.003 (2)	0.013 (2)	-0.004 (2)
N1	0.048 (2)	0.046 (3)	0.051 (3)	0.0022 (19)	0.017 (2)	-0.0065 (19)
N2	0.051 (3)	0.041 (2)	0.053 (3)	-0.0033 (19)	0.021 (2)	0.0016 (19)
N3	0.061 (3)	0.063 (3)	0.074 (3)	-0.006 (2)	0.035 (3)	0.008 (3)
Mn1	0.0490 (5)	0.0355 (5)	0.0370 (5)	0.0002 (3)	0.0160 (3)	-0.0001 (3)
O1	0.046 (2)	0.055 (2)	0.043 (2)	-0.0140 (16)	0.0116 (16)	0.0073 (16)
O2	0.056 (2)	0.059 (2)	0.037 (2)	-0.0187 (18)	0.0051 (16)	0.0048 (16)
O3	0.046 (2)	0.057 (2)	0.039 (2)	-0.0124 (16)	0.0069 (16)	0.0062 (16)
O4	0.0449 (19)	0.0467 (19)	0.0401 (19)	-0.0105 (15)	0.0132 (16)	0.0017 (15)
O1W	0.060 (3)	0.103 (4)	0.097 (4)	0.016 (3)	0.027 (3)	-0.002 (3)
O2W	0.047 (4)	0.069 (4)	0.102 (5)	0.000	-0.002 (4)	0.000

*Geometric parameters (Å, °)*

C1—N1	1.342 (7)	C9—O3	1.250 (6)
C1—C2	1.376 (8)	C9—C10	1.557 (7)
C1—H1	0.9300	C10—O2	1.245 (6)
C2—C3	1.365 (10)	C10—O4	1.253 (5)
C2—H2	0.9300	N2—N3	1.348 (6)
C3—C4	1.367 (9)	N3—H3A	0.8600
C3—H3	0.9300	Mn1—N1	2.280 (4)
C4—C5	1.388 (8)	Mn1—N2	2.223 (4)
C4—H4	0.9300	Mn1—O4 <sup>i</sup>	2.150 (3)
C5—N1	1.344 (6)	Mn1—O2	2.168 (3)
C5—C6	1.468 (8)	Mn1—O1	2.191 (4)
C6—N2	1.339 (7)	Mn1—O3 <sup>i</sup>	2.208 (3)

C6—C7	1.392 (8)	O3—Mn1 <sup>ii</sup>	2.208 (3)
C7—C8	1.357 (10)	O4—Mn1 <sup>ii</sup>	2.150 (3)
C7—H7	0.9300	O1W—H1W	0.83 (5)
C8—N3	1.329 (8)	O1W—H2W	0.82 (4)
C8—H8	0.9300	O2W—H3W	0.82 (5)
C9—O1	1.250 (6)		
N1—C1—C2	122.7 (6)	C1—N1—C5	117.8 (5)
N1—C1—H1	118.7	C1—N1—Mn1	125.8 (4)
C2—C1—H1	118.7	C5—N1—Mn1	116.2 (3)
C3—C2—C1	119.2 (6)	C6—N2—N3	105.2 (4)
C3—C2—H2	120.4	C6—N2—Mn1	117.0 (3)
C1—C2—H2	120.4	N3—N2—Mn1	137.6 (4)
C2—C3—C4	119.0 (6)	C8—N3—N2	111.5 (5)
C2—C3—H3	120.5	C8—N3—H3A	124.2
C4—C3—H3	120.5	N2—N3—H3A	124.2
C3—C4—C5	119.5 (6)	O4 <sup>i</sup> —Mn1—O2	92.44 (13)
C3—C4—H4	120.3	O4 <sup>i</sup> —Mn1—O1	159.58 (14)
C5—C4—H4	120.3	O2—Mn1—O1	75.93 (13)
N1—C5—C4	121.7 (5)	O4 <sup>i</sup> —Mn1—O3 <sup>i</sup>	76.27 (12)
N1—C5—C6	115.5 (4)	O2—Mn1—O3 <sup>i</sup>	102.10 (16)
C4—C5—C6	122.8 (5)	O1—Mn1—O3 <sup>i</sup>	89.63 (13)
N2—C6—C7	110.1 (5)	O4 <sup>i</sup> —Mn1—N2	99.67 (15)
N2—C6—C5	118.1 (4)	O2—Mn1—N2	161.17 (16)
C7—C6—C5	131.8 (5)	O1—Mn1—N2	96.12 (15)
C8—C7—C6	105.4 (6)	O3 <sup>i</sup> —Mn1—N2	94.79 (14)
C8—C7—H7	127.3	O4 <sup>i</sup> —Mn1—N1	100.36 (14)
C6—C7—H7	127.3	O2—Mn1—N1	90.74 (16)
N3—C8—C7	107.8 (6)	O1—Mn1—N1	96.58 (15)
N3—C8—H8	126.1	O3 <sup>i</sup> —Mn1—N1	166.79 (15)
C7—C8—H8	126.1	N2—Mn1—N1	73.01 (16)
O1—C9—O3	126.2 (4)	C9—O1—Mn1	114.4 (3)
O1—C9—C10	117.0 (4)	C10—O2—Mn1	115.4 (3)
O3—C9—C10	116.8 (4)	C9—O3—Mn1 <sup>ii</sup>	114.0 (3)
O2—C10—O4	126.4 (4)	C10—O4—Mn1 <sup>ii</sup>	115.7 (3)
O2—C10—C9	116.5 (4)	H1W—O1W—H2W	114 (4)
O4—C10—C9	117.1 (4)		

Symmetry codes: (i)  $x, -y, z-1/2$ ; (ii)  $x, -y, z+1/2$ .

#### Hydrogen-bond geometry ( $\text{\AA}$ , $^\circ$ )

$D-H\cdots A$	$D-H$	$H\cdots A$	$D\cdots A$	$D-H\cdots A$
N3—H3A $\cdots$ O1W	0.86	1.89	2.748 (7)	175
O1W—H1W $\cdots$ O1 <sup>iii</sup>	0.83 (5)	2.08 (4)	2.851 (6)	155 (6)
O1W—H2W $\cdots$ O2W <sup>iv</sup>	0.82 (4)	2.10 (5)	2.819 (6)	148 (6)
O2W—H3W $\cdots$ O3 <sup>v</sup>	0.82 (5)	2.06 (4)	2.823 (4)	156 (6)

Symmetry codes: (iii)  $-x+1, y, -z+1/2$ ; (iv)  $-x+1, -y+1, -z$ ; (v)  $x, -y+1, z-1/2$ .