

Acta Crystallographica Section E

## Structure Reports

Online

ISSN 1600-5368

# (E)-N'-(2,5-Dimethoxybenzylidene)-3,4-dihydroxybenzohydrazide monohydrate

 Bin Xu,<sup>a</sup> Ling Han<sup>b\*</sup> and Qi-Hui Zhang<sup>c‡</sup>

<sup>a</sup>Department of Nutrition, Jilin Medical College, Jilin 132013, People's Republic of China, <sup>b</sup>Liao Ning Benxi Third Pharmaceuticals Co Ltd, Benxi 117004, People's Republic of China, and <sup>c</sup>College of Traditional Chinese Materia Medica, Shenyang Pharmaceutical University, Shenyang 110016, People's Republic of China  
Correspondence e-mail: jlbinoxu@163.com

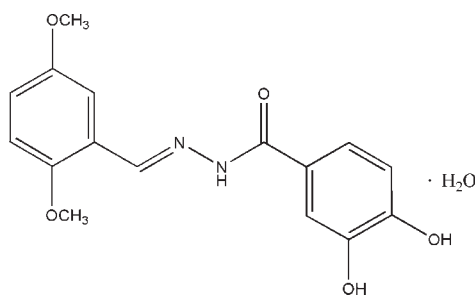
Received 19 September 2009; accepted 28 September 2009

Key indicators: single-crystal X-ray study;  $T = 295$  K; mean  $\sigma(\text{C}-\text{C}) = 0.002$  Å;  $R$  factor = 0.036;  $wR$  factor = 0.098; data-to-parameter ratio = 12.4.

In the title compound,  $\text{C}_{16}\text{H}_{16}\text{N}_2\text{O}_5 \cdot \text{H}_2\text{O}$ , the dihedral angle between the two benzene rings is  $25.9(1)^\circ$ . Intramolecular  $\text{O}-\text{H} \cdots \text{O}$  and  $\text{N}-\text{H} \cdots \text{O}$  hydrogen bonds are observed. In the crystal, the components are linked into a three-dimensional network by  $\text{O}-\text{H} \cdots \text{O}$  and  $\text{O}-\text{H} \cdots (\text{O}, \text{O})$  hydrogen bonds.

## Related literature

For related structures, see: Pu (2008); Wang *et al.* (2009). For reference structural data, see: Allen *et al.* (1987).



## Experimental

## Crystal data

 $\text{C}_{16}\text{H}_{16}\text{N}_2\text{O}_5 \cdot \text{H}_2\text{O}$ 
 $M_r = 334.32$ 

Monoclinic,  $P2_1/c$   
 $a = 10.2573(8)$  Å  
 $b = 12.4199(10)$  Å  
 $c = 14.0042(8)$  Å  
 $\beta = 119.666(4)^\circ$   
 $V = 1550.2(2)$  Å<sup>3</sup>

$Z = 4$   
 Mo  $K\alpha$  radiation  
 $\mu = 0.11$  mm<sup>-1</sup>  
 $T = 295$  K  
 $0.20 \times 0.18 \times 0.17$  mm

## Data collection

Siemens SMART CCD diffractometer  
 Absorption correction: multi-scan (SADABS; Siemens, 1996)  
 $T_{\min} = 0.978$ ,  $T_{\max} = 0.981$

7993 measured reflections  
 2735 independent reflections  
 2110 reflections with  $I > 2\sigma(I)$   
 $R_{\text{int}} = 0.060$

## Refinement

$R[F^2 > 2\sigma(F^2)] = 0.036$   
 $wR(F^2) = 0.098$   
 $S = 1.02$   
 2735 reflections

220 parameters  
 H-atom parameters constrained  
 $\Delta\rho_{\max} = 0.30$  e Å<sup>-3</sup>  
 $\Delta\rho_{\min} = -0.15$  e Å<sup>-3</sup>

Table 1

Hydrogen-bond geometry (Å, °).

| $D-H \cdots A$                               | $D-H$ | $H \cdots A$ | $D \cdots A$ | $D-H \cdots A$ |
|--|-------|--------------|--------------|----------------|
| $\text{O1}-\text{H1} \cdots \text{O3}^i$     | 0.82  | 2.03         | 2.8384 (15)  | 168            |
| $\text{O2}-\text{H2} \cdots \text{O1}$       | 0.82  | 2.25         | 2.7014 (15)  | 115            |
| $\text{O2}-\text{H2} \cdots \text{O5}^i$     | 0.82  | 2.43         | 3.0191 (15)  | 130            |
| $\text{O6}-\text{H17} \cdots \text{O2}^{ii}$ | 0.85  | 2.06         | 2.9003 (15)  | 169            |
| $\text{O6}-\text{H18} \cdots \text{O3}^i$    | 0.85  | 1.95         | 2.7837 (15)  | 165            |
| $\text{N1}-\text{H1A} \cdots \text{O6}$      | 0.86  | 2.16         | 2.8592 (17)  | 138            |

Symmetry codes: (i)  $-x + 1, y + \frac{1}{2}, -z + \frac{1}{2}$ ; (ii)  $-x + 1, -y + 1, -z$ .

Data collection: SMART (Siemens, 1996); cell refinement: SAINT (Siemens, 1996); data reduction: SAINT; program(s) used to solve structure: SHELXS97 (Sheldrick, 2008); program(s) used to refine structure: SHELXL97 (Sheldrick, 2008); molecular graphics: SHELXTL (Sheldrick, 2008); software used to prepare material for publication: SHELXTL.

Supplementary data and figures for this paper are available from the IUCr electronic archives (Reference: HB5111).

## References

- Allen, F. H., Kennard, O., Watson, D. G., Brammer, L., Orpen, A. G. & Taylor, R. (1987). *J. Chem. Soc. Perkin Trans. 2*, pp. S1–19.  
 Pu, X.-H. (2008). *Acta Cryst. E* **64**, o1734.  
 Sheldrick, G. M. (2008). *Acta Cryst. A* **64**, 112–122.  
 Siemens (1996). SMART, SAINT and SADABS. Siemens Analytical X-ray Instruments Inc., Madison, Wisconsin, USA.  
 Wang, S.-Y., Yuan, L., Xu, L., Zhang, Z., Diao, Y.-P. & Lv, D.-C. (2009). *Acta Cryst. E* **65**, o1154.

<sup>‡</sup> Additional correspondence author, e-mail: qihui79@hotmail.com.

## supporting information

*Acta Cryst.* (2009). E65, o2615 [https://doi.org/10.1107/S1600536809039300]

**(*E*)-*N'*-(2,5-Dimethoxybenzylidene)-3,4-dihydroxybenzohydrazide monohydrate****Bin Xu, Ling Han and Qi-Hui Zhang****S1. Comment**

Schiff base compounds have been of great interest for many years. These compounds play an important role in the development of coordination chemistry related to catalysis and enzymatic reactions, magnetism and molecular architectures (Pu, 2008). As a part of our on going investigation in this field we have determined the crystal structure of the title compound, (I).

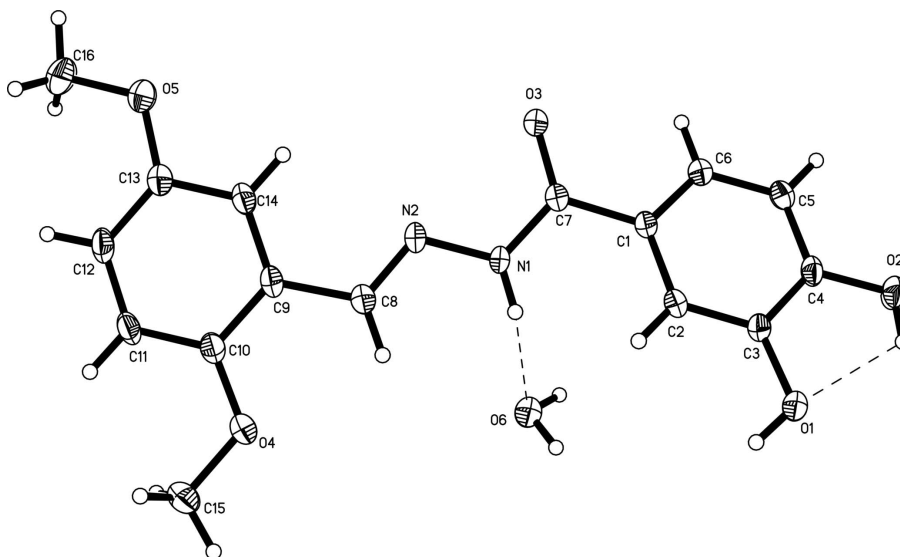
The Schiff base molecule of the compound displays a *trans* configuration with respect to the C=N and C—N bonds (Fig. 1). All the bond lengths are within normal ranges (Allen *et al.*, 1987), and are comparable to other Schiff base compounds containing 2,5-dimethoxybenzaldehyde (Wang *et al.*, 2009). The dihedral angle between the two benzene rings is 25.9 (1)°. Intramolecular O—H···O and N—H···O hydrogen bonds are observed (Table 1). Molecules are linked into three-dimensional network by O—H···O hydrogen bonds (Fig. 2).

**S2. Experimental**

2,5-Dimethoxybenzaldehyde (0.1 mmol, 16.6 mg) and 3,4-dihydroxybenzohydrazide (0.1 mmol, 16.9 mg) were dissolved in a 95% ethanol solution (10 ml). The mixture was stirred at room temperature to give a clear colorless solution. Light yellow blocks of (I) were formed by gradual evaporation of the solvent over a period of six days at room temperature.

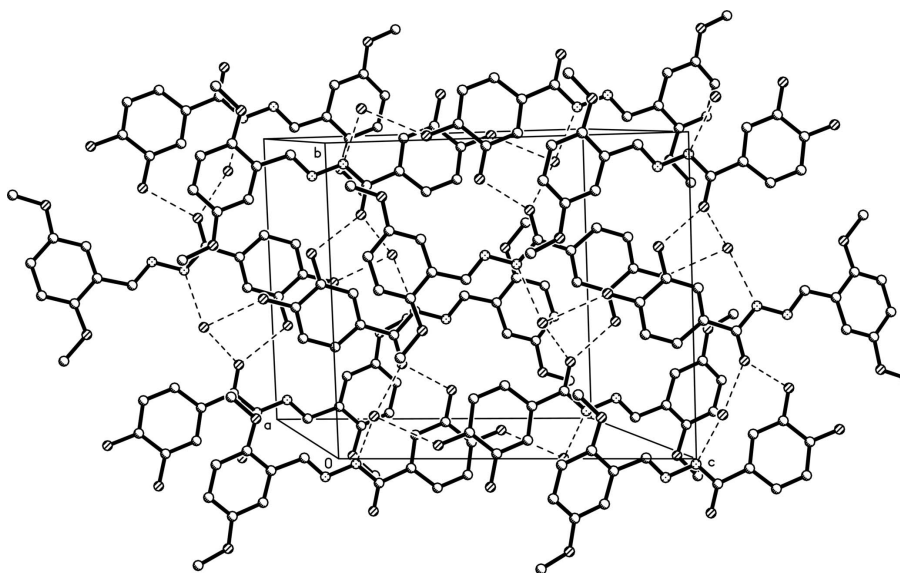
**S3. Refinement**

All H atoms were placed in geometrically idealized positions (C—H = 0.93–0.96 Å, O—H = 0.82–0.85 Å and N—H = 0.86 Å) and refined as riding with  $U_{\text{iso}}(\text{H}) = 1.2U_{\text{eq}}(\text{C}, \text{N})$  or  $1.5U_{\text{eq}}(\text{O})$ .



**Figure 1**

The molecular structure of (I), with displacement ellipsoids drawn at the 30% probability level. The dashed lines indicate hydrogen bonds.



**Figure 2**

The molecular packing of (I). Intermolecular hydrogen bonds are shown as dashed lines. H atoms not involved in the hydrogen bonds have been omitted for clarity.

**(*E*)-*N'*-(2,5-Dimethoxybenzylidene)-3,4-dihydroxybenzohydrazide monohydrate**

*Crystal data*

$C_{16}H_{16}N_2O_5 \cdot H_2O$

$M_r = 334.32$

Monoclinic,  $P2_1/c$

Hall symbol:  $-P\ 2ybc$

$a = 10.2573\ (8)\ \text{\AA}$

$b = 12.4199\ (10)\ \text{\AA}$

$c = 14.0042\ (8)\ \text{\AA}$

$\beta = 119.666\ (4)^\circ$

$V = 1550.2\ (2)\ \text{\AA}^3$

$Z = 4$

$F(000) = 704$   
 $D_x = 1.432 \text{ Mg m}^{-3}$   
 Mo  $K\alpha$  radiation,  $\lambda = 0.71073 \text{ \AA}$   
 Cell parameters from 2817 reflections  
 $\theta = 2.3\text{--}28.0^\circ$

$\mu = 0.11 \text{ mm}^{-1}$   
 $T = 295 \text{ K}$   
 Block, light yellow  
 $0.20 \times 0.18 \times 0.17 \text{ mm}$

*Data collection*

Siemens SMART CCD  
 diffractometer  
 Radiation source: fine-focus sealed tube  
 Graphite monochromator  
 $\omega$  scans  
 Absorption correction: multi-scan  
 (SADABS; Siemens, 1996)  
 $T_{\min} = 0.978$ ,  $T_{\max} = 0.981$

7993 measured reflections  
 2735 independent reflections  
 2110 reflections with  $I > 2\sigma(I)$   
 $R_{\text{int}} = 0.060$   
 $\theta_{\max} = 25.1^\circ$ ,  $\theta_{\min} = 2.3^\circ$   
 $h = -12 \rightarrow 10$   
 $k = -14 \rightarrow 14$   
 $l = -16 \rightarrow 15$

*Refinement*

Refinement on  $F^2$   
 Least-squares matrix: full  
 $R[F^2 > 2\sigma(F^2)] = 0.036$   
 $wR(F^2) = 0.098$   
 $S = 1.02$   
 2735 reflections  
 220 parameters  
 0 restraints  
 Primary atom site location: structure-invariant  
 direct methods  
 Secondary atom site location: difference Fourier  
 map

Hydrogen site location: inferred from  
 neighbouring sites  
 H-atom parameters constrained  
 $w = 1/[\sigma^2(F_o^2) + (0.0472P)^2 + 0.0836P]$   
 where  $P = (F_o^2 + 2F_c^2)/3$   
 $(\Delta/\sigma)_{\max} < 0.001$   
 $\Delta\rho_{\max} = 0.30 \text{ e \AA}^{-3}$   
 $\Delta\rho_{\min} = -0.15 \text{ e \AA}^{-3}$   
 Extinction correction: SHELXL97 (Sheldrick,  
 2008),  $F_c^* = kF_c[1 + 0.001x F_c^2 \lambda^3 / \sin(2\theta)]^{-1/4}$   
 Extinction coefficient: 0.0092 (15)

*Special details*

**Geometry.** All e.s.d.'s (except the e.s.d. in the dihedral angle between two l.s. planes) are estimated using the full covariance matrix. The cell e.s.d.'s are taken into account individually in the estimation of e.s.d.'s in distances, angles and torsion angles; correlations between e.s.d.'s in cell parameters are only used when they are defined by crystal symmetry. An approximate (isotropic) treatment of cell e.s.d.'s is used for estimating e.s.d.'s involving l.s. planes.

**Refinement.** Refinement of  $F^2$  against ALL reflections. The weighted  $R$ -factor  $wR$  and goodness of fit  $S$  are based on  $F^2$ , conventional  $R$ -factors  $R$  are based on  $F$ , with  $F$  set to zero for negative  $F^2$ . The threshold expression of  $F^2 > \sigma(F^2)$  is used only for calculating  $R$ -factors(gt) etc. and is not relevant to the choice of reflections for refinement.  $R$ -factors based on  $F^2$  are statistically about twice as large as those based on  $F$ , and  $R$ -factors based on ALL data will be even larger.

*Fractional atomic coordinates and isotropic or equivalent isotropic displacement parameters ( $\text{\AA}^2$ )*

|     | $x$          | $y$         | $z$          | $U_{\text{iso}}^*/U_{\text{eq}}$ |
|-----|--------------|-------------|--------------|----------------------------------|
| O1  | 0.29807 (12) | 0.63600 (8) | 0.00386 (8)  | 0.0415 (3)                       |
| H1  | 0.3478       | 0.6763      | 0.0558       | 0.062*                           |
| O2  | 0.25882 (12) | 0.49266 (9) | -0.15328 (8) | 0.0451 (3)                       |
| H2  | 0.2479       | 0.5582      | -0.1561      | 0.068*                           |
| O3  | 0.50018 (13) | 0.24912 (8) | 0.30247 (8)  | 0.0462 (3)                       |
| O4  | 0.83630 (14) | 0.60874 (9) | 0.70864 (9)  | 0.0516 (3)                       |
| O5  | 0.84768 (13) | 0.17847 (9) | 0.81326 (9)  | 0.0554 (4)                       |
| O6  | 0.71520 (13) | 0.60032 (9) | 0.33312 (9)  | 0.0469 (3)                       |
| H17 | 0.7355       | 0.5747      | 0.2857       | 0.070*                           |
| H18 | 0.6560       | 0.6530      | 0.3021       | 0.070*                           |

|      |              |              |               |            |
|------|--------------|--------------|---------------|------------|
| N1   | 0.56517 (14) | 0.42030 (10) | 0.36286 (9)   | 0.0374 (3) |
| H1A  | 0.5658       | 0.4873       | 0.3477        | 0.045*     |
| N2   | 0.62828 (14) | 0.38569 (10) | 0.47007 (10)  | 0.0386 (3) |
| C1   | 0.43573 (16) | 0.38751 (11) | 0.16836 (11)  | 0.0311 (4) |
| C2   | 0.39529 (16) | 0.49534 (12) | 0.14219 (11)  | 0.0324 (4) |
| H2A  | 0.4068       | 0.5431       | 0.1970        | 0.039*     |
| C3   | 0.33846 (15) | 0.53178 (12) | 0.03578 (12)  | 0.0306 (3) |
| C4   | 0.31715 (16) | 0.45885 (12) | -0.04685 (11) | 0.0328 (4) |
| C5   | 0.35509 (17) | 0.35223 (13) | -0.02211 (12) | 0.0380 (4) |
| H5   | 0.3408       | 0.3041       | -0.0773       | 0.046*     |
| C6   | 0.41477 (17) | 0.31659 (12) | 0.08543 (12)  | 0.0363 (4) |
| H6   | 0.4409       | 0.2445       | 0.1020        | 0.044*     |
| C7   | 0.50232 (16) | 0.34597 (12) | 0.28220 (12)  | 0.0336 (4) |
| C8   | 0.69125 (17) | 0.45828 (13) | 0.54315 (12)  | 0.0378 (4) |
| H8   | 0.6879       | 0.5300       | 0.5230        | 0.045*     |
| C9   | 0.76899 (16) | 0.42735 (13) | 0.65942 (11)  | 0.0346 (4) |
| C10  | 0.84706 (17) | 0.50414 (13) | 0.74194 (12)  | 0.0364 (4) |
| C11  | 0.92900 (17) | 0.46990 (14) | 0.84979 (12)  | 0.0410 (4) |
| H11  | 0.9825       | 0.5200       | 0.9049        | 0.049*     |
| C12  | 0.93298 (18) | 0.36251 (14) | 0.87737 (12)  | 0.0429 (4) |
| H12  | 0.9899       | 0.3410       | 0.9503        | 0.051*     |
| C13  | 0.85242 (18) | 0.28700 (13) | 0.79661 (12)  | 0.0396 (4) |
| C14  | 0.77166 (17) | 0.32066 (13) | 0.68859 (12)  | 0.0390 (4) |
| H14  | 0.7176       | 0.2702       | 0.6340        | 0.047*     |
| C15  | 0.9048 (2)   | 0.68888 (14) | 0.79085 (14)  | 0.0512 (5) |
| H15A | 0.8601       | 0.6884       | 0.8370        | 0.077*     |
| H15B | 0.8903       | 0.7582       | 0.7567        | 0.077*     |
| H15C | 1.0102       | 0.6743       | 0.8344        | 0.077*     |
| C16  | 0.9447 (2)   | 0.13853 (17) | 0.92118 (15)  | 0.0683 (6) |
| H16A | 1.0461       | 0.1594       | 0.9442        | 0.102*     |
| H16B | 0.9382       | 0.0614       | 0.9210        | 0.102*     |
| H16C | 0.9151       | 0.1678       | 0.9710        | 0.102*     |

*Atomic displacement parameters (Å<sup>2</sup>)*

|    | $U^{11}$   | $U^{22}$   | $U^{33}$   | $U^{12}$    | $U^{13}$   | $U^{23}$    |
|----|------------|------------|------------|-------------|------------|-------------|
| O1 | 0.0508 (7) | 0.0360 (6) | 0.0266 (6) | 0.0042 (5)  | 0.0106 (5) | 0.0021 (5)  |
| O2 | 0.0597 (8) | 0.0478 (7) | 0.0227 (6) | 0.0049 (5)  | 0.0166 (6) | 0.0044 (5)  |
| O3 | 0.0635 (8) | 0.0327 (6) | 0.0257 (6) | -0.0063 (5) | 0.0093 (6) | 0.0017 (5)  |
| O4 | 0.0685 (8) | 0.0415 (7) | 0.0295 (6) | -0.0086 (6) | 0.0126 (6) | -0.0060 (5) |
| O5 | 0.0657 (8) | 0.0467 (7) | 0.0324 (7) | -0.0016 (6) | 0.0079 (6) | 0.0076 (5)  |
| O6 | 0.0586 (8) | 0.0424 (7) | 0.0345 (6) | 0.0024 (5)  | 0.0190 (6) | 0.0026 (5)  |
| N1 | 0.0499 (8) | 0.0325 (7) | 0.0176 (6) | -0.0026 (6) | 0.0075 (6) | 0.0025 (5)  |
| N2 | 0.0463 (8) | 0.0408 (8) | 0.0196 (6) | -0.0029 (6) | 0.0093 (6) | 0.0009 (6)  |
| C1 | 0.0319 (8) | 0.0328 (8) | 0.0222 (7) | -0.0040 (6) | 0.0084 (6) | -0.0006 (6) |
| C2 | 0.0339 (8) | 0.0351 (8) | 0.0226 (8) | -0.0032 (6) | 0.0097 (7) | -0.0039 (6) |
| C3 | 0.0280 (8) | 0.0335 (8) | 0.0243 (8) | 0.0000 (6)  | 0.0084 (6) | 0.0013 (6)  |
| C4 | 0.0326 (8) | 0.0427 (9) | 0.0200 (8) | -0.0026 (7) | 0.0107 (7) | 0.0008 (6)  |

|     |             |             |             |             |             |             |
|-----|-------------|-------------|-------------|-------------|-------------|-------------|
| C5  | 0.0471 (10) | 0.0385 (9)  | 0.0254 (8)  | -0.0036 (7) | 0.0156 (7)  | -0.0065 (7) |
| C6  | 0.0429 (9)  | 0.0322 (8)  | 0.0277 (8)  | -0.0012 (7) | 0.0128 (7)  | -0.0007 (7) |
| C7  | 0.0361 (9)  | 0.0337 (9)  | 0.0238 (8)  | -0.0029 (6) | 0.0094 (7)  | -0.0008 (6) |
| C8  | 0.0433 (9)  | 0.0373 (9)  | 0.0265 (8)  | -0.0001 (7) | 0.0125 (7)  | -0.0012 (7) |
| C9  | 0.0335 (9)  | 0.0432 (9)  | 0.0216 (8)  | 0.0009 (6)  | 0.0095 (7)  | -0.0026 (6) |
| C10 | 0.0388 (9)  | 0.0410 (9)  | 0.0268 (8)  | -0.0007 (7) | 0.0143 (7)  | -0.0034 (7) |
| C11 | 0.0438 (10) | 0.0484 (10) | 0.0233 (8)  | -0.0048 (7) | 0.0109 (7)  | -0.0091 (7) |
| C12 | 0.0454 (10) | 0.0542 (11) | 0.0204 (8)  | 0.0024 (8)  | 0.0097 (7)  | 0.0005 (7)  |
| C13 | 0.0425 (10) | 0.0427 (10) | 0.0278 (8)  | 0.0002 (7)  | 0.0130 (7)  | 0.0009 (7)  |
| C14 | 0.0413 (9)  | 0.0433 (10) | 0.0240 (8)  | -0.0017 (7) | 0.0098 (7)  | -0.0041 (7) |
| C15 | 0.0569 (11) | 0.0437 (10) | 0.0422 (10) | -0.0060 (8) | 0.0162 (9)  | -0.0106 (8) |
| C16 | 0.0812 (15) | 0.0597 (13) | 0.0383 (11) | 0.0024 (10) | 0.0099 (10) | 0.0188 (9)  |

*Geometric parameters (Å, °)*

|            |             |             |             |
|------------|-------------|-------------|-------------|
| O1—C3      | 1.3652 (17) | C4—C5       | 1.375 (2)   |
| O1—H1      | 0.8200      | C5—C6       | 1.388 (2)   |
| O2—C4      | 1.3687 (16) | C5—H5       | 0.9300      |
| O2—H2      | 0.8198      | C6—H6       | 0.9300      |
| O3—C7      | 1.2386 (17) | C8—C9       | 1.466 (2)   |
| O4—C10     | 1.3662 (19) | C8—H8       | 0.9300      |
| O4—C15     | 1.4173 (19) | C9—C14      | 1.383 (2)   |
| O5—C13     | 1.3729 (19) | C9—C10      | 1.404 (2)   |
| O5—C16     | 1.4254 (19) | C10—C11     | 1.383 (2)   |
| O6—H17     | 0.8500      | C11—C12     | 1.384 (2)   |
| O6—H18     | 0.8508      | C11—H11     | 0.9300      |
| N1—C7      | 1.3501 (18) | C12—C13     | 1.384 (2)   |
| N1—N2      | 1.3770 (17) | C12—H12     | 0.9300      |
| N1—H1A     | 0.8595      | C13—C14     | 1.382 (2)   |
| N2—C8      | 1.2740 (19) | C14—H14     | 0.9300      |
| C1—C6      | 1.387 (2)   | C15—H15A    | 0.9600      |
| C1—C2      | 1.396 (2)   | C15—H15B    | 0.9600      |
| C1—C7      | 1.482 (2)   | C15—H15C    | 0.9600      |
| C2—C3      | 1.380 (2)   | C16—H16A    | 0.9600      |
| C2—H2A     | 0.9300      | C16—H16B    | 0.9600      |
| C3—C4      | 1.399 (2)   | C16—H16C    | 0.9600      |
| C3—O1—H1   | 109.5       | C9—C8—H8    | 120.4       |
| C4—O2—H2   | 109.4       | C14—C9—C10  | 119.21 (14) |
| C10—O4—C15 | 117.82 (12) | C14—C9—C8   | 119.97 (14) |
| C13—O5—C16 | 117.19 (13) | C10—C9—C8   | 120.76 (14) |
| H17—O6—H18 | 106.2       | O4—C10—C11  | 124.61 (14) |
| C7—N1—N2   | 118.09 (12) | O4—C10—C9   | 116.64 (13) |
| C7—N1—H1A  | 120.9       | C11—C10—C9  | 118.75 (15) |
| N2—N1—H1A  | 121.0       | C10—C11—C12 | 121.29 (15) |
| C8—N2—N1   | 115.64 (13) | C10—C11—H11 | 119.4       |
| C6—C1—C2   | 119.12 (13) | C12—C11—H11 | 119.4       |
| C6—C1—C7   | 118.53 (13) | C11—C12—C13 | 120.12 (14) |

|             |              |                 |              |
|-------------|--------------|-----------------|--------------|
| C2—C1—C7    | 122.35 (13)  | C11—C12—H12     | 119.9        |
| C3—C2—C1    | 120.64 (13)  | C13—C12—H12     | 119.9        |
| C3—C2—H2A   | 119.7        | O5—C13—C14      | 115.51 (14)  |
| C1—C2—H2A   | 119.7        | O5—C13—C12      | 125.69 (14)  |
| O1—C3—C2    | 124.19 (13)  | C14—C13—C12     | 118.78 (15)  |
| O1—C3—C4    | 116.44 (13)  | C13—C14—C9      | 121.79 (15)  |
| C2—C3—C4    | 119.36 (13)  | C13—C14—H14     | 119.1        |
| O2—C4—C5    | 119.11 (13)  | C9—C14—H14      | 119.1        |
| O2—C4—C3    | 120.48 (13)  | O4—C15—H15A     | 109.5        |
| C5—C4—C3    | 120.41 (13)  | O4—C15—H15B     | 109.5        |
| C4—C5—C6    | 119.89 (14)  | H15A—C15—H15B   | 109.5        |
| C4—C5—H5    | 120.1        | O4—C15—H15C     | 109.5        |
| C6—C5—H5    | 120.1        | H15A—C15—H15C   | 109.5        |
| C1—C6—C5    | 120.56 (14)  | H15B—C15—H15C   | 109.5        |
| C1—C6—H6    | 119.7        | O5—C16—H16A     | 109.5        |
| C5—C6—H6    | 119.7        | O5—C16—H16B     | 109.5        |
| O3—C7—N1    | 121.84 (13)  | H16A—C16—H16B   | 109.5        |
| O3—C7—C1    | 122.25 (13)  | O5—C16—H16C     | 109.5        |
| N1—C7—C1    | 115.91 (12)  | H16A—C16—H16C   | 109.5        |
| N2—C8—C9    | 119.18 (14)  | H16B—C16—H16C   | 109.5        |
| N2—C8—H8    | 120.4        |                 |              |
|             |              |                 |              |
| C7—N1—N2—C8 | 177.35 (14)  | N1—N2—C8—C9     | -176.41 (13) |
| C6—C1—C2—C3 | -1.5 (2)     | N2—C8—C9—C14    | -0.8 (2)     |
| C7—C1—C2—C3 | 177.70 (13)  | N2—C8—C9—C10    | 176.25 (15)  |
| C1—C2—C3—O1 | -179.19 (13) | C15—O4—C10—C11  | -4.8 (2)     |
| C1—C2—C3—C4 | 2.0 (2)      | C15—O4—C10—C9   | 175.43 (14)  |
| O1—C3—C4—O2 | 0.1 (2)      | C14—C9—C10—O4   | -177.86 (14) |
| C2—C3—C4—O2 | 179.00 (13)  | C8—C9—C10—O4    | 5.1 (2)      |
| O1—C3—C4—C5 | 179.83 (13)  | C14—C9—C10—C11  | 2.4 (2)      |
| C2—C3—C4—C5 | -1.2 (2)     | C8—C9—C10—C11   | -174.70 (14) |
| O2—C4—C5—C6 | 179.82 (14)  | O4—C10—C11—C12  | 179.15 (15)  |
| C3—C4—C5—C6 | 0.1 (2)      | C9—C10—C11—C12  | -1.1 (2)     |
| C2—C1—C6—C5 | 0.3 (2)      | C10—C11—C12—C13 | -0.9 (2)     |
| C7—C1—C6—C5 | -178.94 (14) | C16—O5—C13—C14  | 172.04 (16)  |
| C4—C5—C6—C1 | 0.4 (2)      | C16—O5—C13—C12  | -6.2 (3)     |
| N2—N1—C7—O3 | 0.1 (2)      | C11—C12—C13—O5  | 179.70 (15)  |
| N2—N1—C7—C1 | 179.86 (13)  | C11—C12—C13—C14 | 1.5 (2)      |
| C6—C1—C7—O3 | -21.2 (2)    | O5—C13—C14—C9   | -178.57 (14) |
| C2—C1—C7—O3 | 159.56 (15)  | C12—C13—C14—C9  | -0.2 (2)     |
| C6—C1—C7—N1 | 159.05 (14)  | C10—C9—C14—C13  | -1.8 (2)     |
| C2—C1—C7—N1 | -20.2 (2)    | C8—C9—C14—C13   | 175.35 (14)  |

*Hydrogen-bond geometry (Å, °)*

| <i>D</i> —H $\cdots$ <i>A</i>  | <i>D</i> —H | H $\cdots$ <i>A</i> | <i>D</i> $\cdots$ <i>A</i> | <i>D</i> —H $\cdots$ <i>A</i> |
|--------------------------------|-------------|---------------------|----------------------------|-------------------------------|
| O1—H1 $\cdots$ O3 <sup>i</sup> | 0.82        | 2.03                | 2.8384 (15)                | 168                           |
| O2—H2 $\cdots$ O1              | 0.82        | 2.25                | 2.7014 (15)                | 115                           |

---

|                           |      |      |             |     |
|---------------------------|------|------|-------------|-----|
| O2—H2···O5 <sup>i</sup>   | 0.82 | 2.43 | 3.0191 (15) | 130 |
| O6—H17···O2 <sup>ii</sup> | 0.85 | 2.06 | 2.9003 (15) | 169 |
| O6—H18···O3 <sup>i</sup>  | 0.85 | 1.95 | 2.7837 (15) | 165 |
| N1—H1A···O6               | 0.86 | 2.16 | 2.8592 (17) | 138 |

---

Symmetry codes: (i)  $-x+1, y+1/2, -z+1/2$ ; (ii)  $-x+1, -y+1, -z$ .