

Acta Crystallographica Section E

## Structure Reports

Online

ISSN 1600-5368

## 4-(4-Chlorophenyl)-5-phenylisoxazole

M. Krishnaiah,<sup>a</sup> R. Ravi Kumar,<sup>a</sup> Thanzaw Oo<sup>b\*</sup> and Pho Kaung<sup>b</sup><sup>a</sup>Department of Physics, SV University, Tirupati 517502, India, and <sup>b</sup>Department of Physics, Yangon University, Myanmar

Correspondence e-mail: Thanzawoo06@gmail.com

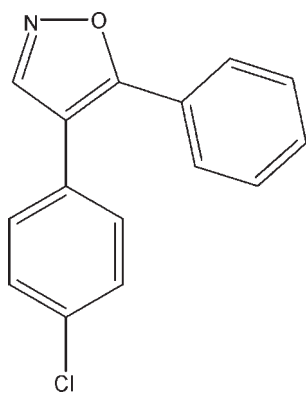
Received 5 August 2009; accepted 26 August 2009

Key indicators: single-crystal X-ray study;  $T = 295$  K; mean  $\sigma(\text{C}-\text{C}) = 0.005$  Å;  $R$  factor = 0.063;  $wR$  factor = 0.197; data-to-parameter ratio = 10.5.

The title compound,  $\text{C}_{15}\text{H}_{10}\text{ClNO}$ , is a functionalized isoxazole with a chlorophenyl and a phenyl substituent. The mean plane of the isoxazole ring is inclined to those of the two benzene ring mean planes by  $38.32$  (16) and  $43.91$  (18)°.

## Related literature

For the chemistry and biological properties of isoxazoles, see: Bruno *et al.* (2004); Foti *et al.* (2004); He *et al.* (2000); Lakhvich *et al.* (1989); Lin *et al.* (1997); Makarov *et al.* (2005); Shipman (1995); Zhong *et al.* (2005). For related structures, see: Chang (2007); Tang *et al.* (2006); Zhang *et al.* (2006). For the synthesis, see: Subba Raju & Rao (1987).



## Experimental

## Crystal data

 $\text{C}_{15}\text{H}_{10}\text{ClNO}$   
 $M_r = 255.69$ 

 Monoclinic,  $P2_1/c$   
 $a = 6.554$  (2) Å

 $b = 25.966$  (2) Å  
 $c = 7.4721$  (19) Å  
 $\beta = 106.171$  (3)°  
 $V = 1221.2$  (5) Å<sup>3</sup>  
 $Z = 4$ 

 Mo  $K\alpha$  radiation  
 $\mu = 0.30$  mm<sup>-1</sup>  
 $T = 295$  K  
 $0.3 \times 0.2 \times 0.2$  mm

## Data collection

 Bruker SMART CCD  
 diffractometer  
 Absorption correction: multi-scan  
 (SADABS; Bruker, 2001)  
 $T_{\min} = 0.928$ ,  $T_{\max} = 0.952$ 

 2820 measured reflections  
 2132 independent reflections  
 1851 reflections with  $I > 2\sigma(I)$   
 $R_{\text{int}} = 0.050$ 

## Refinement

 $R[F^2 > 2\sigma(F^2)] = 0.063$   
 $wR(F^2) = 0.197$   
 $S = 1.15$   
 2132 reflections

 204 parameters  
 All H-atom parameters refined  
 $\Delta\rho_{\text{max}} = 0.27$  e Å<sup>-3</sup>  
 $\Delta\rho_{\text{min}} = -0.40$  e Å<sup>-3</sup>

Data collection: SMART (Bruker 2007); cell refinement: SAINT (Bruker 2007); data reduction: SAINT; program(s) used to solve structure: SHELXS97 (Sheldrick, 2008); program(s) used to refine structure: SHELXL97 (Sheldrick, 2008); molecular graphics: ORTEP-3 for Windows (Farrugia, 1997); software used to prepare material for publication: enCIFer (Allen *et al.*, 2004) and PARST (Nardelli, 1995).

MK thanks Ed. CEL, New Delhi, for sponsoring a visit to Yangon University, Myanmar.

Supplementary data and figures for this paper are available from the IUCr electronic archives (Reference: SU2135).

## References

- Allen, F. H., Johnson, O., Shields, G. P., Smith, B. R. & Towler, M. (2004). *J. Appl. Cryst.* **37**, 335–338.
- Bruker (2001). SADABS. Bruker AXS Inc., Madison, Wisconsin, USA.
- Bruker (2007). SMART and SAINT. Bruker AXS Inc., Madison, Wisconsin, USA.
- Bruno, G., Rotondo, A., Grassi, G., Foti, F., Risitano, F. & Nicoló, F. (2004). *Acta Cryst.* **C60**, o496–o497.
- Chang, X.-H. (2007). *Acta Cryst.* **E63**, o3074.
- Farrugia, L. J. (1997). *J. Appl. Cryst.* **30**, 565.
- Foti, F., Grassi, G., Risitano, F., Rotondo, E. & Zona, D. (2004). *Synlett*, pp. 1577–1578.
- He, H.-W., Li, M.-Q. & Huang, G.-L. (2000). *Pesticides*, **8**, 4–7.
- Lakhvich, F. A., Koroleva, E. V. & Akhrem, A. A. (1989). *Chem. Heterocycl. Compd.* **25**, 359–375.
- Lin, S. T., Kuo, S. H. & Yang, F. M. (1997). *J. Org. Chem.* **62**, 5229–5231.
- Makarov, V. A., Riabova, O. B., Granik, V. G., Wutzler, P. & Schmidtke, M. (2005). *J. Antimicrob. Chemother.* **55**, 483–488.
- Nardelli, M. (1995). *J. Appl. Cryst.* **28**, 659.
- Sheldrick, G. M. (2008). *Acta Cryst.* **A64**, 112–122.
- Shipman, M. (1995). *Contemp. Org. Synth.* **2**, 1–17.
- Subba Raju, G. V. & Rao, K. S. (1987). *Curr. Sci.* **56**, 1280–1281.
- Tang, L.-D., Zhang, D.-T., Sun, F.-G., Duan, G.-Y. & Wang, J.-W. (2006). *Acta Cryst.* **E62**, o1298–o1299.
- Zhang, D.-T., Ma, Y. & Shi, N.-Q. (2006). *Acta Cryst.* **E62**, o5213–o5214.
- Zhong, B., Li, Z.-M. & Song, H.-B. (2005). *Acta Cryst.* **E61**, o2621–o2622.

## supporting information

*Acta Cryst.* (2009). E65, o2324 [doi:10.1107/S1600536809034254]

## 4-(4-Chlorophenyl)-5-phenylisoxazole

M. Krishnaiah, R. Ravi Kumar, Thanzaw Oo and Pho Kaung

### S1. Comment

Isoxazoles are often used as pharmacophores in medicinal chemistry (Makarov *et al.*, 2005). They are also important intermediates in the synthesis of many complex natural products (Lakhvich *et al.*, 1989; Shipman, 1995). Recent synthetic efforts have established the importance of biologically active heterocyclic compounds (Foti *et al.*, 2004). Of particular importance are the derivatives of isoxazoles representing one of the most active classes of compounds widely used in agrochemicals and pharmaceuticals (He *et al.*, 2000). Such compounds have been studied from a synthetic (Bruno *et al.*, 2004) and also from a structural viewpoint (Zhong *et al.*, 2005). Isoxazole derivatives exhibit anticonvulsant, antibacterial, antiasthmatic, and other pharmacological activities (Lin *et al.*, 1997). In this article, we report on the crystal structure of the title compound, 4-(4-chloro phenyl)-5-phenylisoxazole.

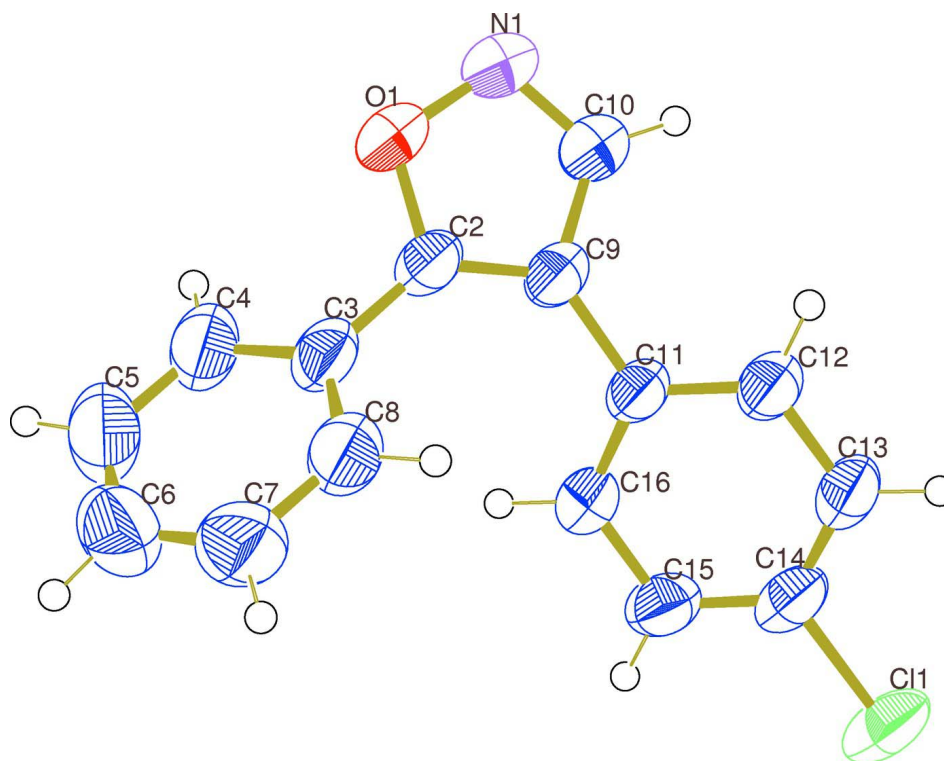
The molecular structure of the title compound is illustrated in Fig. 1 and the geometrical parameters are available in the archived CIF. The title compound is a functionalized isoxazole with a chlorophenyl and a phenyl substituent at positions 4 (C9) and 5 (C2), respectively, on the five-membered heterocyclic ring. They are inclined to the planar isoxazole ring mean plane by 38.32 (16)° and 43.91 (18)°, respectively. The torsion angles [C10-C9-C11-C12 = 38.4 (4)°, C2-C9-C11-C16 = 36.6 (5)°, O1-C2-C3-C4 = 44.1 (4)°, and C9-C2-C3-C8 = 43.7 (5)°] confirm that these rings are twisted with respect to the plane of the isoxazole ring. The bond lengths of the isoxazole ring are normal and comparable to those reported for related structures: [3-(4-Chlorophenyl)isoxazol-5-yl]methanol (Tang *et al.*, 2006), 3-(4-Chlorophenyl)-isoxazole-5-carbaldehyde (Zhang *et al.*, 2006), and 3-(2-Chlorophenyl)-*N*-methylisoxazole-5-carboxamide (Chang, 2007). However, bond length C2-C9 [1.359 (4) Å] is lengthened compared to the corresponding values in the above three related structures. {1.337 (3), 1.334 (3), 1.336 (3) Å, respectively}. This may be due to the steric effects caused by the substituents attached at atoms C2 and C9 on the isoxazole ring.

### S2. Experimental

The title compound was prepared according to the published procedure (Subba Raju & Rao, 1987). Recrystallization from *n*-hexane-benzene (1:1, v:v) by slow evaporation gave colourless block-like crystals suitable for X-ray diffraction analysis.

### S3. Refinement

All the H-atoms were clearly located in difference electron-density maps and were freely refined: C-H = 0.91 (5) - 1.00 (4) Å.

**Figure 1**

View of the molecular structure of the title compound, showing the atom-labelling scheme and displacement ellipsoids drawn at the 50% probability level.

#### 4-(4-Chlorophenyl)-5-phenylisoxazole

##### Crystal data

$C_{15}H_{10}ClNO$

$M_r = 255.69$

Monoclinic,  $P2_1/c$

Hall symbol:  $-P\ 2_1/c$

$a = 6.554\ (2)\ \text{\AA}$

$b = 25.966\ (2)\ \text{\AA}$

$c = 7.4721\ (19)\ \text{\AA}$

$\beta = 106.171\ (3)^\circ$

$V = 1221.2\ (5)\ \text{\AA}^3$

$Z = 4$

$F(000) = 528$

##### Data collection

Bruker CCD

diffractometer

Radiation source: fine-focus sealed tube

Graphite monochromator

$\omega$  scans

Absorption correction: multi-scan

(*SADABS*; Bruker, 2001)

$T_{\min} = 0.928$ ,  $T_{\max} = 0.952$

$D_x = 1.391\ \text{Mg m}^{-3}$

$D_m = 1.39\ \text{Mg m}^{-3}$

$D_m$  measured by none

Mo  $K\alpha$  radiation,  $\lambda = 0.71069\ \text{\AA}$

Cell parameters from 2895 reflections

$\theta = 2.4\text{--}25.0^\circ$

$\mu = 0.30\ \text{mm}^{-1}$

$T = 295\ \text{K}$

Block, colourless

$0.3 \times 0.2 \times 0.2\ \text{mm}$

2820 measured reflections

2132 independent reflections

1851 reflections with  $I > 2\sigma(I)$

$R_{\text{int}} = 0.050$

$\theta_{\text{max}} = 25.0^\circ$ ,  $\theta_{\text{min}} = 2.9^\circ$

$h = -1 \rightarrow 7$

$k = -1 \rightarrow 30$

$l = -8 \rightarrow 8$

*Refinement*Refinement on  $F^2$ 

Least-squares matrix: full

 $R[F^2 > 2\sigma(F^2)] = 0.063$  $wR(F^2) = 0.197$  $S = 1.15$ 

2132 reflections

204 parameters

0 restraints

Primary atom site location: structure-invariant  
direct methodsSecondary atom site location: difference Fourier  
mapHydrogen site location: inferred from  
neighbouring sites

All H-atom parameters refined

 $w = 1/[\sigma^2(F_o^2) + (0.1057P)^2 + 0.4763P]$ where  $P = (F_o^2 + 2F_c^2)/3$  $(\Delta/\sigma)_{\max} = 0.013$  $\Delta\rho_{\max} = 0.27 \text{ e } \text{Å}^{-3}$  $\Delta\rho_{\min} = -0.40 \text{ e } \text{Å}^{-3}$ Extinction correction: *SHELXL97* (Sheldrick,  
2008),  $F_c^* = kF_c[1 + 0.001xF_c^2\lambda^3/\sin(2\theta)]^{-1/4}$ 

Extinction coefficient: 0.024 (6)

*Special details*

**Geometry.** All e.s.d.'s (except the e.s.d. in the dihedral angle between two l.s. planes) are estimated using the full covariance matrix. The cell e.s.d.'s are taken into account individually in the estimation of e.s.d.'s in distances, angles and torsion angles; correlations between e.s.d.'s in cell parameters are only used when they are defined by crystal symmetry. An approximate (isotropic) treatment of cell e.s.d.'s is used for estimating e.s.d.'s involving l.s. planes.

**Refinement.** Refinement of  $F^2$  against ALL reflections. The weighted  $R$ -factor  $wR$  and goodness of fit  $S$  are based on  $F^2$ , conventional  $R$ -factors  $R$  are based on  $F$ , with  $F$  set to zero for negative  $F^2$ . The threshold expression of  $F^2 > \sigma(F^2)$  is used only for calculating  $R$ -factors(gt) *etc.* and is not relevant to the choice of reflections for refinement.  $R$ -factors based on  $F^2$  are statistically about twice as large as those based on  $F$ , and  $R$ -factors based on ALL data will be even larger.

*Fractional atomic coordinates and isotropic or equivalent isotropic displacement parameters ( $\text{Å}^2$ )*

	<i>x</i>	<i>y</i>	<i>z</i>	$U_{\text{iso}}^*/U_{\text{eq}}$
N1	0.1131 (4)	0.71167 (11)	0.9809 (4)	0.0706 (8)
O1	0.0578 (3)	0.65915 (8)	0.9619 (3)	0.0655 (6)
C2	0.1585 (4)	0.63669 (11)	0.8469 (4)	0.0539 (7)
C3	0.1165 (5)	0.58171 (11)	0.8114 (4)	0.0592 (7)
C4	-0.0886 (6)	0.56265 (14)	0.7745 (5)	0.0757 (9)
C5	-0.1270 (7)	0.51065 (16)	0.7433 (7)	0.0921 (12)
C6	0.0349 (8)	0.47763 (15)	0.7496 (6)	0.0913 (12)
C7	0.2396 (7)	0.49578 (15)	0.7837 (6)	0.0865 (11)
C8	0.2801 (6)	0.54770 (13)	0.8143 (5)	0.0710 (9)
C9	0.2800 (4)	0.67225 (11)	0.7910 (4)	0.0524 (7)
C10	0.2441 (5)	0.71820 (12)	0.8794 (4)	0.0632 (8)
C11	0.4076 (4)	0.66740 (10)	0.6569 (4)	0.0506 (6)
C12	0.5940 (4)	0.69549 (11)	0.6830 (4)	0.0560 (7)
C13	0.7069 (4)	0.69393 (11)	0.5508 (4)	0.0587 (7)
C14	0.6323 (5)	0.66396 (11)	0.3947 (5)	0.0596 (8)
C11	0.77032 (15)	0.66286 (4)	0.22763 (14)	0.0817 (4)
C15	0.4495 (5)	0.63545 (13)	0.3666 (5)	0.0641 (8)
C16	0.3369 (5)	0.63760 (11)	0.4988 (4)	0.0586 (7)
H8	0.431 (7)	0.5603 (15)	0.846 (5)	0.086 (11)*
H10	0.297 (5)	0.7525 (13)	0.865 (5)	0.069 (9)*
H12	0.650 (5)	0.7156 (13)	0.801 (5)	0.073 (10)*
H13	0.836 (6)	0.7127 (13)	0.568 (5)	0.070 (9)*
H16	0.204 (6)	0.6189 (14)	0.476 (5)	0.075 (9)*

H15	0.394 (6)	0.6146 (16)	0.256 (6)	0.094 (12)*
H7	0.353 (7)	0.4749 (18)	0.780 (6)	0.102 (13)*
H4	-0.208 (6)	0.5869 (15)	0.763 (5)	0.085 (11)*
H6	0.014 (7)	0.4435 (19)	0.723 (6)	0.102 (13)*
H5	-0.270 (8)	0.4997 (19)	0.722 (7)	0.122 (17)*

*Atomic displacement parameters (Å<sup>2</sup>)*

	$U^{11}$	$U^{22}$	$U^{33}$	$U^{12}$	$U^{13}$	$U^{23}$
N1	0.0793 (17)	0.0725 (17)	0.0737 (17)	-0.0026 (12)	0.0440 (14)	-0.0121 (12)
O1	0.0685 (13)	0.0744 (13)	0.0670 (13)	-0.0023 (10)	0.0411 (10)	-0.0038 (10)
C2	0.0534 (14)	0.0615 (16)	0.0551 (15)	0.0020 (11)	0.0289 (11)	0.0019 (12)
C3	0.0649 (16)	0.0626 (16)	0.0607 (17)	-0.0020 (12)	0.0351 (13)	0.0094 (12)
C4	0.0681 (19)	0.074 (2)	0.093 (3)	-0.0085 (16)	0.0371 (17)	0.0076 (18)
C5	0.085 (2)	0.081 (2)	0.115 (3)	-0.022 (2)	0.036 (2)	0.007 (2)
C6	0.119 (3)	0.062 (2)	0.097 (3)	-0.013 (2)	0.038 (2)	0.0002 (19)
C7	0.100 (3)	0.067 (2)	0.102 (3)	0.0114 (19)	0.044 (2)	0.0039 (18)
C8	0.0680 (19)	0.0662 (19)	0.088 (2)	0.0002 (15)	0.0364 (16)	0.0052 (16)
C9	0.0507 (14)	0.0587 (15)	0.0550 (16)	-0.0009 (11)	0.0267 (11)	0.0006 (11)
C10	0.0679 (17)	0.0631 (17)	0.0684 (19)	-0.0038 (13)	0.0349 (14)	-0.0058 (14)
C11	0.0521 (14)	0.0517 (14)	0.0565 (16)	0.0007 (10)	0.0291 (12)	0.0026 (11)
C12	0.0555 (15)	0.0555 (14)	0.0653 (18)	-0.0009 (11)	0.0307 (13)	0.0018 (13)
C13	0.0517 (15)	0.0607 (16)	0.0726 (19)	0.0001 (12)	0.0322 (13)	0.0093 (14)
C14	0.0620 (16)	0.0608 (16)	0.069 (2)	0.0128 (12)	0.0403 (14)	0.0125 (13)
C11	0.0872 (7)	0.0946 (7)	0.0854 (7)	0.0188 (4)	0.0606 (5)	0.0153 (4)
C15	0.0730 (19)	0.0686 (18)	0.0605 (18)	0.0039 (14)	0.0348 (14)	-0.0036 (14)
C16	0.0591 (16)	0.0638 (17)	0.0609 (17)	-0.0087 (13)	0.0300 (13)	-0.0042 (13)

*Geometric parameters (Å, °)*

N1—C10	1.306 (4)	C8—H8	1.00 (4)
N1—O1	1.408 (3)	C9—C10	1.415 (4)
O1—C2	1.353 (3)	C9—C11	1.478 (4)
C2—C9	1.359 (4)	C10—H10	0.97 (3)
C2—C3	1.464 (4)	C11—C16	1.380 (4)
C3—C8	1.385 (4)	C11—C12	1.389 (4)
C3—C4	1.386 (5)	C12—C13	1.390 (4)
C4—C5	1.381 (6)	C12—H12	1.00 (4)
C4—H4	0.99 (4)	C13—C14	1.374 (5)
C5—C6	1.355 (6)	C13—H13	0.96 (4)
C5—H5	0.95 (5)	C14—C15	1.374 (5)
C6—C7	1.377 (6)	C14—C11	1.734 (3)
C6—H6	0.91 (5)	C15—C16	1.389 (4)
C7—C8	1.381 (5)	C15—H15	0.97 (4)
C7—H7	0.92 (5)	C16—H16	0.97 (4)
C10—N1—O1	105.0 (2)	C2—C9—C11	129.8 (3)
C2—O1—N1	108.9 (2)	C10—C9—C11	125.9 (2)

O1—C2—C9	109.5 (2)	N1—C10—C9	112.5 (3)
O1—C2—C3	115.8 (2)	N1—C10—H10	120 (2)
C9—C2—C3	134.8 (3)	C9—C10—H10	128 (2)
C8—C3—C4	118.6 (3)	C16—C11—C12	119.2 (3)
C8—C3—C2	120.9 (3)	C16—C11—C9	120.6 (2)
C4—C3—C2	120.5 (3)	C12—C11—C9	120.1 (3)
C5—C4—C3	120.2 (4)	C11—C12—C13	120.4 (3)
C5—C4—H4	120 (2)	C11—C12—H12	119 (2)
C3—C4—H4	119 (2)	C13—C12—H12	120 (2)
C6—C5—C4	120.6 (4)	C14—C13—C12	119.1 (3)
C6—C5—H5	123 (3)	C14—C13—H13	120 (2)
C4—C5—H5	116 (3)	C12—C13—H13	121 (2)
C5—C6—C7	120.2 (4)	C13—C14—C15	121.6 (3)
C5—C6—H6	123 (3)	C13—C14—C11	119.1 (2)
C7—C6—H6	117 (3)	C15—C14—C11	119.3 (3)
C6—C7—C8	119.8 (4)	C14—C15—C16	118.9 (3)
C6—C7—H7	123 (3)	C14—C15—H15	122 (2)
C8—C7—H7	117 (3)	C16—C15—H15	119 (2)
C7—C8—C3	120.5 (3)	C11—C16—C15	120.9 (3)
C7—C8—H8	119 (2)	C11—C16—H16	120 (2)
C3—C8—H8	120 (2)	C15—C16—H16	119 (2)
C2—C9—C10	104.0 (2)		
C10—N1—O1—C2	-0.6 (3)	C3—C2—C9—C11	4.8 (6)
N1—O1—C2—C9	0.7 (3)	O1—N1—C10—C9	0.3 (4)
N1—O1—C2—C3	-179.6 (2)	C2—C9—C10—N1	0.1 (4)
O1—C2—C3—C8	-135.8 (3)	C11—C9—C10—N1	175.5 (3)
C9—C2—C3—C8	43.7 (5)	C2—C9—C11—C16	36.6 (5)
O1—C2—C3—C4	44.1 (4)	C10—C9—C11—C16	-137.5 (3)
C9—C2—C3—C4	-136.4 (4)	C2—C9—C11—C12	-147.5 (3)
C8—C3—C4—C5	0.7 (5)	C10—C9—C11—C12	38.4 (4)
C2—C3—C4—C5	-179.2 (4)	C16—C11—C12—C13	0.5 (4)
C3—C4—C5—C6	0.4 (7)	C9—C11—C12—C13	-175.4 (3)
C4—C5—C6—C7	-1.2 (7)	C11—C12—C13—C14	-0.4 (4)
C5—C6—C7—C8	1.0 (7)	C12—C13—C14—C15	-0.2 (4)
C6—C7—C8—C3	0.2 (6)	C12—C13—C14—C11	178.9 (2)
C4—C3—C8—C7	-1.0 (5)	C13—C14—C15—C16	0.7 (5)
C2—C3—C8—C7	179.0 (3)	C11—C14—C15—C16	-178.4 (2)
O1—C2—C9—C10	-0.5 (3)	C12—C11—C16—C15	0.0 (4)
C3—C2—C9—C10	179.9 (3)	C9—C11—C16—C15	175.9 (3)
O1—C2—C9—C11	-175.6 (3)	C14—C15—C16—C11	-0.6 (5)