

Acta Crystallographica Section E

Structure Reports

Online

ISSN 1600-5368

4-(4-Bromophenyl)-5-oxo-1,2,3,4,5-,
6,7,8-octahydroquinazoline-2-thione

Min Xie, Changquan Deng, Jie Zheng and Yulin Zhu*

School of Chemistry and Environment, South China Normal University, Guangzhou 510006, People's Republic of China

Correspondence e-mail: yulinzhu2002@yahoo.com.cn

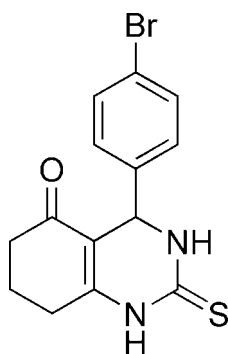
Received 22 June 2009; accepted 21 July 2009

Key indicators: single-crystal X-ray study; $T = 293$ K; mean $\sigma(\text{C}-\text{C}) = 0.006$ Å; R factor = 0.046; wR factor = 0.117; data-to-parameter ratio = 15.8.

The title compound, $\text{C}_{14}\text{H}_{13}\text{BrN}_2\text{OS}$, was synthesized from the multicomponent reaction between thiourea, 4-bromobenzaldehyde and cyclohexane-1,3-dione. The crystal packing is stabilized by intermolecular $\text{N}-\text{H}\cdots\text{O}$, $\text{N}-\text{H}\cdots\text{S}$, $\text{C}-\text{H}\cdots\text{O}$ and $\text{C}-\text{H}\cdots\text{S}$ hydrogen bonds. $\text{Br}\cdots\text{O}$ interactions [3.183 (3) Å] are also observed in the crystal structure.

Related literature

For the pharmaceutical applications of 4-aryl-5-oxo-1,2,3,4,5,6,7,8-octahydroquinazoline-2-thiones, see: Kappe & Stadler (2004); Sarac *et al.* (1997, 1999); Yarima *et al.*, (2003). For background information on halogen bonding, see: Damodharana *et al.* (2004); Sureshan *et al.* (2001); Yang *et al.* (2008).



Experimental

Crystal data

 $\text{C}_{14}\text{H}_{13}\text{BrN}_2\text{OS}$
 $M_r = 337.23$

 Triclinic, $P\bar{1}$
 $a = 7.0395$ (11) Å

 $b = 8.1859$ (13) Å
 $c = 13.286$ (2) Å
 $\alpha = 105.329$ (2)°
 $\beta = 91.279$ (2)°
 $\gamma = 103.854$ (2)°
 $V = 713.9$ (2) Å³
 $Z = 2$
 Mo $K\alpha$ radiation
 $\mu = 3.02$ mm⁻¹
 $T = 293$ K
 $0.25 \times 0.25 \times 0.20$ mm

Data collection

 Bruker APEXII area-detector
 diffractometer
 Absorption correction: multi-scan
 (SADABS; Bruker, 2004)
 $T_{\min} = 0.429$, $T_{\max} = 0.547$

 3953 measured reflections
 2744 independent reflections
 1880 reflections with $I > 2\sigma(I)$
 $R_{\text{int}} = 0.021$

Refinement

 $R[F^2 > 2\sigma(F^2)] = 0.046$
 $wR(F^2) = 0.117$
 $S = 1.04$
 2744 reflections

 174 parameters
 H-atom parameters constrained
 $\Delta\rho_{\text{max}} = 0.42$ e Å⁻³
 $\Delta\rho_{\text{min}} = -0.60$ e Å⁻³

Table 1

Hydrogen-bond geometry (Å, °).

$D-\text{H}\cdots A$	$D-\text{H}$	$\text{H}\cdots A$	$D\cdots A$	$D-\text{H}\cdots A$
$\text{C}2-\text{H}2\text{A}\cdots\text{S}1^{\text{i}}$	0.97	2.98	3.781 (4)	140
$\text{N}2-\text{H}2\cdots\text{S}1^{\text{ii}}$	0.86	2.55	3.380 (3)	161
$\text{N}1-\text{H}1\cdots\text{O}1^{\text{iii}}$	0.86	2.00	2.832 (4)	164
$\text{C}4-\text{H}4\text{A}\cdots\text{O}1^{\text{iii}}$	0.97	2.59	3.361 (4)	137

 Symmetry codes: (i) $-x + 1, -y + 2, -z + 1$; (ii) $-x + 1, -y + 1, -z + 1$; (iii) $x + 1, y, z$.

Data collection: APEX2 (Bruker, 2004); cell refinement: SAINT (Bruker, 2004); data reduction: SAINT; program(s) used to solve structure: SHELXS97 (Sheldrick, 2008); program(s) used to refine structure: SHELXL97 (Sheldrick, 2008); molecular graphics: SHELXTL (Sheldrick, 2008); software used to prepare material for publication: SHELXTL.

The authors thank South China Normal University for financial support (grant Nos. SCNU033038 and SCNU524002).

Supplementary data and figures for this paper are available from the IUCr electronic archives (Reference: ZL2225).

References

- Bruker (2004). APEX2, SAINT and SADABS. Bruker AXS Inc., Madison, Wisconsin, USA.
- Damodharana, D., Pattabha, V., Beherab, M. & Kotha, S. (2004). *J. Mol. Struct.* **705**, 101–106.
- Kappe, C. O. & Stadler, A. (2004). *Org. React.* **63**, 1–116.
- Sarac, S., Yarim, M., Ertan, M., Erol, K. & Aktan, Y. (1997). *Boll. Chim. Farm.* **136**, 657–664.
- Sarac, S., Yarim, M. & Ertan, M. (1999). *Anal. Lett.* **32**, 1245–1254.
- Sheldrick, G. M. (2008). *Acta Cryst.* **A64**, 112–122.
- Sureshan, K. M., Gonnade, R. G., Puranik, V. G., Shashidhar, M. S. & Bhadbhade, M. M. (2001). *Chem. Commun.* pp. 881–882.
- Yang, F. X., Li, X. D., Xu, G. R. & Qian, C. (2008). *Z. Kristallogr. New Cryst. Struct.* **223**, 297–299.
- Yarima, M., Sarac, S., Kilic, F. S. & Erol, K. (2003). *Farmaco*, **58**, 17–24.

supporting information

Acta Cryst. (2009). E65, o1980 [doi:10.1107/S1600536809028761]

4-(4-Bromophenyl)-5-oxo-1,2,3,4,5,6,7,8-octahydroquinazoline-2-thione

Min Xie, Changquan Deng, Jie Zheng and Yulin Zhu

S1. Comment

4-Aryl-5-oxo-1,2,3,4,5,6,7,8-octahydroquinazoline-2-thiones have received much attention recently because of their pharmaceutical applications. (Kappe & Stadler, 2004; Sarac *et al.*, 1997; Sarac *et al.*, 1999). For example, the calcium antagonist activity of the compounds was tested in vitro on isolated rat ileum and lamb carotid artery. (Yarima *et al.*, 2003). As part of our on going studies on the synthesis of quinazolinethiones, the title compound was isolated under Biginelli reaction conditions (Figure 1).

The reaction between thiourea, 4-bromobenzaldehyde, and 1,3-cyclohexanedione instead of an open-chain dicarbonyl compound in the presence of palladium(II) 2,4-pentanedionate as catalyst proceeded to give the title compound in excellent yield. A representation of the title compound is given in Figure 2. There are no unusual bond lengths and angles in the compound. The molecules in the structure are linked via N1—H1...O1 and paired N2—H2...S1 intermolecular hydrogen bonds. The bromine atom Br1 exhibits a Br...O halogen bond with oxygen atom O1 (Figure 3). (Damodharana *et al.*, 2004; Sureshan *et al.*, 2001; Yang *et al.*, 2008). The Br1...O1 distance of this interaction is 3.182 Å, which is less than the sum of their van der Waals radii.

S2. Experimental

A mixture of thiourea (0.91 g, 12 mmol), 4-bromobenzaldehyde (1.84 g, 10 mmol), 1,3-cyclohexanedione (1.12 g, 10 mmol), and palladium(II) 2,4-pentanedionate (0.0020 mg) was refluxed in acetonitrile (12 ml) at 353 K for 4 h. After being cooled to room temperature, the reaction mixture was poured into water. The white precipitate was filtered off with a silica pad, washed twice with water, and the filtrate was then dried under vacuum to yield the product. Single crystals of the title compound were obtained by slow evaporation from ethanol at room temperature to yield colourless, block-shaped crystal.

S3. Refinement

The H atoms were positioned geometrically and allowed to ride on their parent atoms, with C—H = 0.93–0.97 Å and N—H = 0.86 Å, respectively, and $U_{iso} = 1.2_{eq}$ (parent atom).

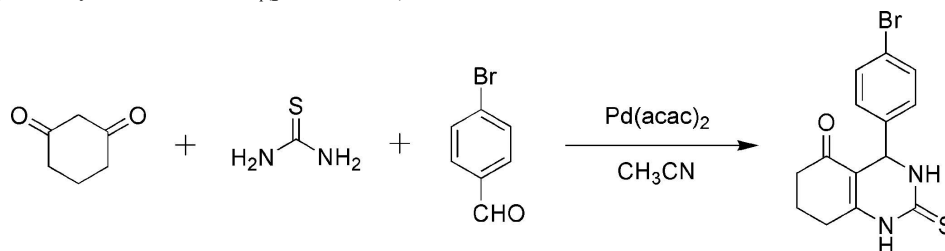
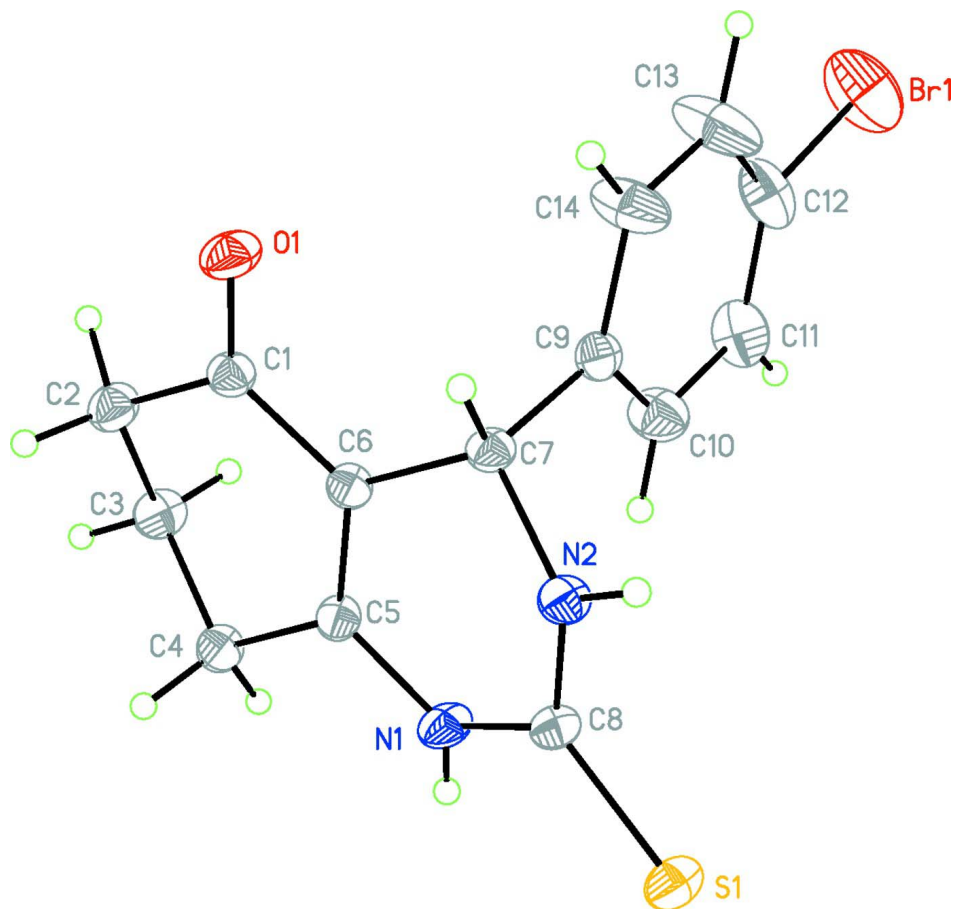


Figure 1

Palladium(II) 2,4-pentanedionate catalyzed synthesis of the title compound.

**Figure 2**

View of the title compound showing the atom-labelling scheme. Ellipsoids are drawn at the 50% probability level.

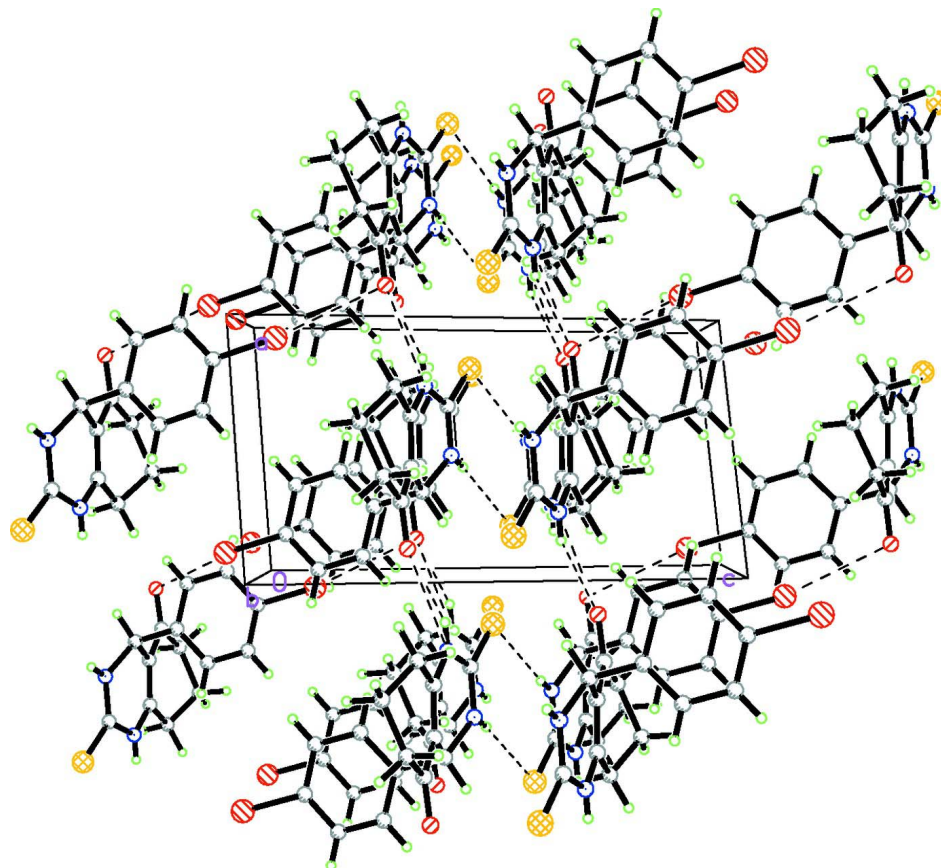


Figure 3

Perspective view of the packing of the title compound. Dashed lines stand for N1—H1...O1 and N2—H2...S1 intermolecular hydrogen bonds and Br1...O1 interactions.

4-(4-Bromophenyl)-5-oxo-1,2,3,4,5,6,7,8-octahydroquinazoline-2-thione

Crystal data

$C_{14}H_{13}BrN_2OS$

$M_r = 337.23$

Triclinic, $P\bar{1}$

Hall symbol: $-P\ 1$

$a = 7.0395$ (11) Å

$b = 8.1859$ (13) Å

$c = 13.286$ (2) Å

$\alpha = 105.329$ (2)°

$\beta = 91.279$ (2)°

$\gamma = 103.854$ (2)°

$V = 713.9$ (2) Å³

$Z = 2$

$F(000) = 340$

$D_x = 1.569$ Mg m⁻³

Mo $K\alpha$ radiation, $\lambda = 0.71073$ Å

Cell parameters from 1089 reflections

$\theta = 2.7$ – 23.6 °

$\mu = 3.02$ mm⁻¹

$T = 293$ K

Block, colourless

$0.25 \times 0.25 \times 0.20$ mm

Data collection

Bruker APEXII area-detector
diffractometer

Radiation source: fine-focus sealed tube

Graphite monochromator

φ and ω scans

Absorption correction: multi-scan
(*APEX2*; Bruker, 2004)

$T_{\min} = 0.429$, $T_{\max} = 0.547$

3953 measured reflections

2744 independent reflections

1880 reflections with $I > 2\sigma(I)$

$R_{\text{int}} = 0.021$
 $\theta_{\text{max}} = 26.0^\circ$, $\theta_{\text{min}} = 1.6^\circ$
 $h = -8 \rightarrow 8$

$k = -10 \rightarrow 10$
 $l = -16 \rightarrow 16$

Refinement

Refinement on F^2
 Least-squares matrix: full
 $R[F^2 > 2\sigma(F^2)] = 0.046$
 $wR(F^2) = 0.117$
 $S = 1.04$
 2744 reflections
 174 parameters
 0 restraints
 Primary atom site location: structure-invariant
 direct methods
 Secondary atom site location: difference Fourier
 map

Hydrogen site location: inferred from
 neighbouring sites
 H-atom parameters constrained
 $w = 1/[\sigma^2(F_o^2) + (0.0382P)^2 + 0.8552P]$
 where $P = (F_o^2 + 2F_c^2)/3$
 $(\Delta/\sigma)_{\text{max}} < 0.001$
 $\Delta\rho_{\text{max}} = 0.42 \text{ e } \text{\AA}^{-3}$
 $\Delta\rho_{\text{min}} = -0.60 \text{ e } \text{\AA}^{-3}$
 Extinction correction: *SHELXL97* (Sheldrick,
 2008), $F_c^* = kF_c[1 + 0.001x F_c^2 \lambda^3 / \sin(2\theta)]^{-1/4}$
 Extinction coefficient: 0.0058 (17)

Special details

Geometry. All esds (except the esd in the dihedral angle between two l.s. planes) are estimated using the full covariance matrix. The cell esds are taken into account individually in the estimation of esds in distances, angles and torsion angles; correlations between esds in cell parameters are only used when they are defined by crystal symmetry. An approximate (isotropic) treatment of cell esds is used for estimating esds involving l.s. planes.

Refinement. Refinement of F^2 against ALL reflections. The weighted R-factor wR and goodness of fit S are based on F^2 , conventional R-factors R are based on F , with F set to zero for negative F^2 . The threshold expression of $F^2 > 2\sigma(F^2)$ is used only for calculating R-factors(gt) etc. and is not relevant to the choice of reflections for refinement. R-factors based on F^2 are statistically about twice as large as those based on F , and R- factors based on ALL data will be even larger.

Fractional atomic coordinates and isotropic or equivalent isotropic displacement parameters (\AA^2)

	<i>x</i>	<i>y</i>	<i>z</i>	$U_{\text{iso}}^*/U_{\text{eq}}$
Br1	0.08077 (11)	0.17375 (8)	-0.08352 (4)	0.0927 (3)
S1	0.81565 (14)	0.62120 (13)	0.47136 (8)	0.0395 (3)
N2	0.4706 (4)	0.6637 (4)	0.4168 (2)	0.0322 (7)
H2	0.4223	0.6000	0.4568	0.039*
C8	0.6646 (5)	0.7134 (5)	0.4188 (3)	0.0294 (8)
C7	0.3316 (5)	0.7096 (4)	0.3511 (3)	0.0291 (8)
H7	0.2139	0.7176	0.3881	0.035*
C6	0.4253 (5)	0.8861 (4)	0.3369 (3)	0.0282 (8)
C5	0.6241 (5)	0.9449 (4)	0.3455 (3)	0.0287 (8)
C1	0.3007 (5)	0.9915 (4)	0.3130 (3)	0.0303 (8)
C4	0.7274 (5)	1.1109 (5)	0.3220 (3)	0.0352 (9)
H4A	0.8475	1.0964	0.2906	0.042*
H4B	0.7626	1.2047	0.3867	0.042*
C2	0.3965 (5)	1.1566 (5)	0.2867 (3)	0.0396 (9)
H2A	0.4084	1.2547	0.3484	0.047*
H2B	0.3129	1.1722	0.2328	0.047*
C3	0.5987 (5)	1.1589 (5)	0.2486 (3)	0.0402 (9)
H3A	0.5851	1.0768	0.1796	0.048*
H3B	0.6606	1.2749	0.2426	0.048*
N1	0.7383 (4)	0.8485 (4)	0.3772 (2)	0.0350 (7)

H1	0.8622	0.8751	0.3703	0.042*
C9	0.2714 (5)	0.5708 (4)	0.2475 (3)	0.0321 (8)
C12	0.1586 (8)	0.3298 (5)	0.0523 (3)	0.0557 (12)
C14	0.0763 (6)	0.4943 (6)	0.2134 (4)	0.0598 (13)
H14	-0.0197	0.5240	0.2564	0.072*
C10	0.4095 (6)	0.5213 (6)	0.1814 (3)	0.0482 (11)
H10	0.5424	0.5704	0.2027	0.058*
C11	0.3538 (7)	0.4003 (6)	0.0842 (3)	0.0545 (12)
H11	0.4483	0.3674	0.0411	0.065*
C13	0.0205 (8)	0.3738 (7)	0.1163 (4)	0.0802 (18)
H13	-0.1120	0.3228	0.0947	0.096*
O1	0.1229 (4)	0.9472 (3)	0.3167 (2)	0.0426 (7)

Atomic displacement parameters (Å²)

	U^{11}	U^{22}	U^{33}	U^{12}	U^{13}	U^{23}
Br1	0.1179 (6)	0.0830 (5)	0.0453 (3)	-0.0032 (4)	0.0010 (3)	-0.0098 (3)
S1	0.0319 (6)	0.0473 (6)	0.0477 (6)	0.0135 (4)	0.0060 (4)	0.0239 (5)
N2	0.0243 (17)	0.0368 (17)	0.0377 (17)	0.0038 (13)	0.0046 (13)	0.0172 (14)
C8	0.027 (2)	0.036 (2)	0.0277 (18)	0.0093 (16)	0.0019 (14)	0.0123 (15)
C7	0.0207 (18)	0.0322 (19)	0.0358 (19)	0.0052 (15)	0.0042 (15)	0.0127 (15)
C6	0.0252 (19)	0.0285 (18)	0.0306 (18)	0.0044 (15)	0.0049 (14)	0.0099 (14)
C5	0.0245 (19)	0.0284 (18)	0.0348 (19)	0.0065 (15)	0.0069 (15)	0.0114 (15)
C1	0.026 (2)	0.0326 (19)	0.0319 (19)	0.0073 (15)	0.0046 (15)	0.0079 (15)
C4	0.026 (2)	0.031 (2)	0.050 (2)	0.0026 (16)	0.0055 (17)	0.0165 (17)
C2	0.030 (2)	0.039 (2)	0.053 (2)	0.0100 (17)	0.0058 (18)	0.0179 (18)
C3	0.034 (2)	0.041 (2)	0.051 (2)	0.0052 (18)	0.0070 (18)	0.0251 (19)
N1	0.0208 (16)	0.0410 (18)	0.0496 (19)	0.0077 (13)	0.0072 (14)	0.0231 (15)
C9	0.030 (2)	0.0297 (19)	0.038 (2)	0.0042 (16)	0.0037 (16)	0.0161 (16)
C12	0.073 (3)	0.040 (2)	0.041 (2)	-0.003 (2)	0.007 (2)	0.0044 (19)
C14	0.034 (2)	0.074 (3)	0.050 (3)	-0.002 (2)	0.006 (2)	-0.003 (2)
C10	0.037 (2)	0.054 (3)	0.049 (3)	0.010 (2)	0.0076 (19)	0.008 (2)
C11	0.067 (3)	0.051 (3)	0.044 (3)	0.014 (2)	0.015 (2)	0.010 (2)
C13	0.045 (3)	0.092 (4)	0.064 (3)	-0.013 (3)	0.000 (3)	-0.017 (3)
O1	0.0251 (15)	0.0507 (17)	0.0573 (18)	0.0117 (12)	0.0069 (12)	0.0221 (14)

Geometric parameters (Å, °)

Br1—C12	1.895 (4)	C4—H4B	0.9700
Br1—O1 ⁱ	3.183 (3)	C2—C3	1.519 (5)
S1—C8	1.678 (4)	C2—H2A	0.9700
N2—C8	1.326 (4)	C2—H2B	0.9700
N2—C7	1.474 (4)	C3—H3A	0.9700
N2—H2	0.8600	C3—H3B	0.9700
C8—N1	1.364 (4)	N1—H1	0.8600
C7—C6	1.500 (5)	C9—C14	1.376 (5)
C7—C9	1.510 (5)	C9—C10	1.386 (5)
C7—H7	0.9800	C12—C13	1.356 (6)

C6—C5	1.358 (5)	C12—C11	1.366 (7)
C6—C1	1.453 (5)	C14—C13	1.383 (6)
C5—N1	1.382 (4)	C14—H14	0.9300
C5—C4	1.495 (5)	C10—C11	1.384 (6)
C1—O1	1.222 (4)	C10—H10	0.9300
C1—C2	1.492 (5)	C11—H11	0.9300
C4—C3	1.504 (5)	C13—H13	0.9300
C4—H4A	0.9700		
C12—Br1—O1 ⁱ	154.81 (16)	C1—C2—H2B	108.9
C8—N2—C7	124.8 (3)	C3—C2—H2B	108.9
C8—N2—H2	117.6	H2A—C2—H2B	107.7
C7—N2—H2	117.6	C4—C3—C2	111.6 (3)
N2—C8—N1	116.3 (3)	C4—C3—H3A	109.3
N2—C8—S1	123.1 (3)	C2—C3—H3A	109.3
N1—C8—S1	120.6 (3)	C4—C3—H3B	109.3
N2—C7—C6	108.5 (3)	C2—C3—H3B	109.3
N2—C7—C9	111.0 (3)	H3A—C3—H3B	108.0
C6—C7—C9	112.0 (3)	C8—N1—C5	123.3 (3)
N2—C7—H7	108.4	C8—N1—H1	118.3
C6—C7—H7	108.4	C5—N1—H1	118.3
C9—C7—H7	108.4	C14—C9—C10	117.5 (4)
C5—C6—C1	120.8 (3)	C14—C9—C7	121.0 (3)
C5—C6—C7	120.1 (3)	C10—C9—C7	121.4 (3)
C1—C6—C7	119.1 (3)	C13—C12—C11	120.5 (4)
C6—C5—N1	119.4 (3)	C13—C12—Br1	119.9 (4)
C6—C5—C4	122.9 (3)	C11—C12—Br1	119.6 (3)
N1—C5—C4	117.7 (3)	C9—C14—C13	121.1 (4)
O1—C1—C6	120.6 (3)	C9—C14—H14	119.4
O1—C1—C2	121.3 (3)	C13—C14—H14	119.4
C6—C1—C2	118.1 (3)	C11—C10—C9	121.4 (4)
C5—C4—C3	110.8 (3)	C11—C10—H10	119.3
C5—C4—H4A	109.5	C9—C10—H10	119.3
C3—C4—H4A	109.5	C12—C11—C10	119.3 (4)
C5—C4—H4B	109.5	C12—C11—H11	120.3
C3—C4—H4B	109.5	C10—C11—H11	120.3
H4A—C4—H4B	108.1	C12—C13—C14	120.2 (5)
C1—C2—C3	113.4 (3)	C12—C13—H13	119.9
C1—C2—H2A	108.9	C14—C13—H13	119.9
C3—C2—H2A	108.9		
C7—N2—C8—N1	16.5 (5)	C1—C2—C3—C4	-50.8 (5)
C7—N2—C8—S1	-164.9 (3)	N2—C8—N1—C5	7.6 (5)
C8—N2—C7—C6	-31.3 (4)	S1—C8—N1—C5	-171.1 (3)
C8—N2—C7—C9	92.1 (4)	C6—C5—N1—C8	-12.3 (5)
N2—C7—C6—C5	24.8 (4)	C4—C5—N1—C8	167.8 (3)
C9—C7—C6—C5	-98.0 (4)	N2—C7—C9—C14	126.7 (4)
N2—C7—C6—C1	-155.8 (3)	C6—C7—C9—C14	-111.9 (4)

C9—C7—C6—C1	81.3 (4)	N2—C7—C9—C10	-56.1 (4)
C1—C6—C5—N1	174.5 (3)	C6—C7—C9—C10	65.3 (4)
C7—C6—C5—N1	-6.1 (5)	O1 ⁱ —Br1—C12—C13	63.0 (6)
C1—C6—C5—C4	-5.6 (5)	O1 ⁱ —Br1—C12—C11	-115.5 (5)
C7—C6—C5—C4	173.8 (3)	C10—C9—C14—C13	-0.7 (7)
C5—C6—C1—O1	-171.9 (3)	C7—C9—C14—C13	176.6 (5)
C7—C6—C1—O1	8.8 (5)	C14—C9—C10—C11	0.5 (6)
C5—C6—C1—C2	6.5 (5)	C7—C9—C10—C11	-176.8 (4)
C7—C6—C1—C2	-172.9 (3)	C13—C12—C11—C10	-1.9 (7)
C6—C5—C4—C3	-23.7 (5)	Br1—C12—C11—C10	176.6 (3)
N1—C5—C4—C3	156.2 (3)	C9—C10—C11—C12	0.8 (7)
O1—C1—C2—C3	-159.6 (4)	C11—C12—C13—C14	1.8 (9)
C6—C1—C2—C3	22.0 (5)	Br1—C12—C13—C14	-176.8 (4)
C5—C4—C3—C2	50.7 (4)	C9—C14—C13—C12	-0.4 (9)

Symmetry code: (i) $-x, -y+1, -z$.

Hydrogen-bond geometry (Å, °)

<i>D—H...A</i>	<i>D—H</i>	<i>H...A</i>	<i>D...A</i>	<i>D—H...A</i>
C2—H2A...S1 ⁱⁱ	0.97	2.98	3.781 (4)	140
N2—H2...S1 ⁱⁱⁱ	0.86	2.55	3.380 (3)	161
N1—H1...O1 ^{iv}	0.86	2.00	2.832 (4)	164
C4—H4A...O1 ^{iv}	0.97	2.59	3.361 (4)	137

Symmetry codes: (ii) $-x+1, -y+2, -z+1$; (iii) $-x+1, -y+1, -z+1$; (iv) $x+1, y, z$.