

Acta Crystallographica Section E

## Structure Reports

Online

ISSN 1600-5368

**[*N'*-(5-Chloro-2-oxidobenzylidene- $\kappa$ O)-3-hydroxy-2-naphthohydrazidato- $\kappa^2$ *N',O*]dimethyltin(IV)**

See Mun Lee, Kong Mun Lo, Hapipah Mohd Ali and Seik Weng Ng\*

Department of Chemistry, University of Malaya, 50603 Kuala Lumpur, Malaysia  
Correspondence e-mail: seikweng@um.edu.my

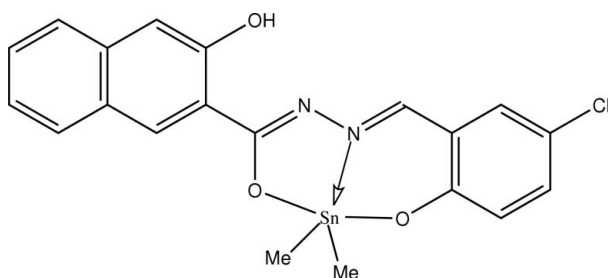
Received 10 June 2009; accepted 11 June 2009

Key indicators: single-crystal X-ray study;  $T = 100$  K; mean  $\sigma(\text{C}-\text{C}) = 0.003$  Å;  $R$  factor = 0.019;  $wR$  factor = 0.049; data-to-parameter ratio = 16.7.

The  $\text{Sn}^{\text{IV}}$  atom in the title compound,  $[\text{Sn}(\text{CH}_3)_2(\text{C}_{18}\text{H}_{11}\text{ClN}_2\text{O}_3)]$ , shows a *trans*- $\text{C}_2\text{NO}_2\text{Sn}$  trigonal-bipyramidal coordination; the axial  $\text{O}-\text{Sn}-\text{O}$  angle is  $155.22(5)^\circ$ . The tridentate *N'*-(5-chloro-2-oxidobenzylidene)-3-hydroxy-2-naphthohydrazidate dianion is stabilized by an intramolecular  $\text{O}-\text{H}\cdots\text{N}$  hydrogen bond.

## Related literature

The dianions of similar *N'*-(2-hydroxybenzylidene)benzohydrazones *O,N,O'*-chelate tin in organotin compounds; see: Labib *et al.* (1996); Samanta *et al.* (2007).



## Experimental

## Crystal data

$[\text{Sn}(\text{CH}_3)_2(\text{C}_{18}\text{H}_{11}\text{ClN}_2\text{O}_3)]$

$M_r = 487.50$

Triclinic,  $P\bar{1}$

$a = 6.8374(1)$  Å

$b = 11.6207(2)$  Å

$c = 12.0159(2)$  Å

$\alpha = 86.874(1)^\circ$

$\beta = 75.926(1)^\circ$

$\gamma = 80.635(1)^\circ$

$V = 913.61(3)$  Å<sup>3</sup>

$Z = 2$

Mo  $K\alpha$  radiation

$\mu = 1.57$  mm<sup>-1</sup>

$T = 100$  K

$0.30 \times 0.20 \times 0.10$  mm

## Data collection

Bruker SMART APEX diffractometer

Absorption correction: multi-scan (SADABS; Sheldrick, 1996)

$T_{\text{min}} = 0.623$ ,  $T_{\text{max}} = 0.746$

(expected range = 0.714–0.855)

8585 measured reflections

4182 independent reflections

3924 reflections with  $I > 2\sigma(I)$

$R_{\text{int}} = 0.015$

## Refinement

$R[F^2 > 2\sigma(F^2)] = 0.019$

$wR(F^2) = 0.049$

$S = 1.04$

4182 reflections

250 parameters

1 restraint

H atoms treated by a mixture of independent and constrained refinement

$\Delta\rho_{\text{max}} = 0.65$  e Å<sup>-3</sup>

$\Delta\rho_{\text{min}} = -0.58$  e Å<sup>-3</sup>

Table 1

Hydrogen-bond geometry (Å, °).

$D-H\cdots A$	$D-H$	$H\cdots A$	$D\cdots A$	$D-H\cdots A$
$\text{O3}-\text{H3}\cdots\text{N2}$	0.83 (1)	1.86 (2)	2.604 (2)	148 (2)

Data collection: APEX2 (Bruker, 2007); cell refinement: SAINT (Bruker, 2007); data reduction: SAINT; program(s) used to solve structure: SHELXS97 (Sheldrick, 2008); program(s) used to refine structure: SHELXL97 (Sheldrick, 2008); molecular graphics: XSEED (Barbour, 2001); software used to prepare material for publication: publCIF (Westrip, 2009).

We thank the University of Malaya (PS320/2008C, RG020/09AFR) for supporting this study.

Supplementary data and figures for this paper are available from the IUCr electronic archives (Reference: TK2476).

## References

- Barbour, L. J. (2001). *J. Supramol. Chem.* **1**, 189–191.  
 Bruker (2007). APEX2 and SAINT. Bruker AXS Inc., Madison, Wisconsin, USA.  
 Labib, L., Khalil, T. E., Iskander, M. F. & Refaat, L. S. (1996). *Polyhedron*, **21**, 3697–3707.  
 Samanta, B., Chakraborty, J., Dey, D. K. & Mitra, S. (2007). *Struct. Chem.* **18**, 287–297.  
 Sheldrick, G. M. (1996). SADABS. University of Göttingen, Germany.  
 Sheldrick, G. M. (2008). *Acta Cryst.* **A64**, 112–122.  
 Westrip, S. P. (2009). publCIF. In preparation.

## supporting information

*Acta Cryst.* (2009). E65, m816 [doi:10.1107/S1600536809022259]

## [*N'*-(5-Chloro-2-oxidobenzylidene- $\kappa$ O)-3-hydroxy-2-naphthohydrazidato- $\kappa^2$ *N',O*]dimethyltin(IV)

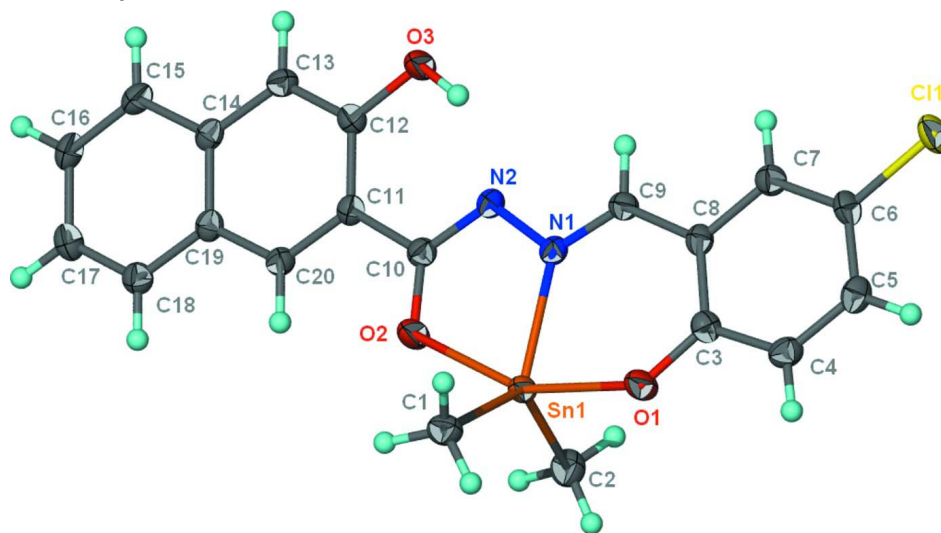
See Mun Lee, Kong Mun Lo, Hapipah Mohd Ali and Seik Weng Ng

### S1. Experimental

The Schiff base was synthesized by the condensation of 3-hydroxy-2-naphthoylhydrazide and 5-chlorosalicylaldehyde. The Schiff base (0.50 g, 1.5 mmol) and dimethyltin oxide (0.24 g, 1.5 mmol) were heated in methanol until the oxide dissolved completely; the filtered solution yielded yellow crystals when the solvent was allowed to evaporate over a few days.

### S2. Refinement

Hydrogen atoms were placed at calculated positions (C–H 0.95–0.98 Å) and were treated as riding on their parent atoms, with  $U(\text{H})$  set to 1.2–1.5 $U_{\text{eq}}(\text{C})$ . The hydroxy H-atom was refined with a distance restraint of 0.84±0.01 Å.



**Figure 1**

Thermal ellipsoid plot (Barbour, 2001) of  $(\text{CH}_3)_2\text{Sn}(\text{C}_{18}\text{H}_{11}\text{N}_2\text{O}_3)$  at the 70% probability level. Hydrogen atoms are drawn as spheres of arbitrary radius.

## [*N'*-(5-Chloro-2-oxidobenzylidene- $\kappa$ O)-3-hydroxy-2-naphthohydrazidato- $\kappa^2$ *N',O*]dimethyltin(IV)

### Crystal data

$[\text{Sn}(\text{CH}_3)_2(\text{C}_{18}\text{H}_{11}\text{ClN}_2\text{O}_3)]$

$M_r = 487.50$

Triclinic,  $P\bar{1}$

Hall symbol: -P 1

$a = 6.8374$  (1) Å

$b = 11.6207$  (2) Å

$c = 12.0159$  (2) Å

$\alpha = 86.874$  (1)°

$\beta = 75.926 (1)^\circ$   
 $\gamma = 80.635 (1)^\circ$   
 $V = 913.61 (3) \text{ \AA}^3$   
 $Z = 2$   
 $F(000) = 484$   
 $D_x = 1.772 \text{ Mg m}^{-3}$   
 Mo  $K\alpha$  radiation,  $\lambda = 0.71073 \text{ \AA}$

Cell parameters from 6181 reflections  
 $\theta = 2.5\text{--}28.3^\circ$   
 $\mu = 1.57 \text{ mm}^{-1}$   
 $T = 100 \text{ K}$   
 Block, yellow  
 $0.30 \times 0.20 \times 0.10 \text{ mm}$

*Data collection*

Bruker SMART APEX  
 diffractometer  
 Radiation source: fine-focus sealed tube  
 Graphite monochromator  
 $\omega$  scans  
 Absorption correction: multi-scan  
 (SADABS; Sheldrick, 1996)  
 $T_{\min} = 0.623$ ,  $T_{\max} = 0.746$

8585 measured reflections  
 4182 independent reflections  
 3924 reflections with  $I > 2\sigma(I)$   
 $R_{\text{int}} = 0.015$   
 $\theta_{\max} = 27.5^\circ$ ,  $\theta_{\min} = 1.8^\circ$   
 $h = -8 \rightarrow 8$   
 $k = -14 \rightarrow 15$   
 $l = -15 \rightarrow 15$

*Refinement*

Refinement on  $F^2$   
 Least-squares matrix: full  
 $R[F^2 > 2\sigma(F^2)] = 0.019$   
 $wR(F^2) = 0.049$   
 $S = 1.04$   
 4182 reflections  
 250 parameters  
 1 restraint  
 Primary atom site location: structure-invariant  
 direct methods

Secondary atom site location: difference Fourier  
 map  
 Hydrogen site location: inferred from  
 neighbouring sites  
 H atoms treated by a mixture of independent  
 and constrained refinement  
 $w = 1/[\sigma^2(F_o^2) + (0.0261P)^2 + 0.3698P]$   
 where  $P = (F_o^2 + 2F_c^2)/3$   
 $(\Delta/\sigma)_{\max} = 0.001$   
 $\Delta\rho_{\max} = 0.65 \text{ e \AA}^{-3}$   
 $\Delta\rho_{\min} = -0.58 \text{ e \AA}^{-3}$

*Fractional atomic coordinates and isotropic or equivalent isotropic displacement parameters ( $\text{\AA}^2$ )*

	<i>x</i>	<i>y</i>	<i>z</i>	$U_{\text{iso}}^*/U_{\text{eq}}$
Sn1	0.249480 (17)	0.940034 (10)	0.829046 (10)	0.01557 (5)
Cl1	0.43674 (7)	1.55715 (4)	0.85417 (4)	0.02564 (11)
O1	0.1479 (2)	1.10418 (11)	0.90330 (12)	0.0216 (3)
O2	0.4251 (2)	0.81921 (11)	0.69992 (12)	0.0232 (3)
O3	0.8870 (2)	0.93252 (12)	0.43301 (12)	0.0248 (3)
H3	0.813 (3)	0.968 (2)	0.4896 (15)	0.033 (7)*
N1	0.4700 (2)	1.03357 (13)	0.71084 (13)	0.0155 (3)
N2	0.6016 (2)	0.96863 (13)	0.62100 (13)	0.0164 (3)
C1	-0.0334 (3)	0.92182 (17)	0.79696 (17)	0.0219 (4)
H1A	-0.1400	0.9331	0.8683	0.033*
H1B	-0.0255	0.8436	0.7680	0.033*
H1C	-0.0663	0.9803	0.7397	0.033*
C2	0.3785 (3)	0.85984 (17)	0.96219 (17)	0.0235 (4)
H2A	0.2742	0.8657	1.0347	0.035*
H2B	0.4913	0.8991	0.9691	0.035*
H2C	0.4299	0.7775	0.9445	0.035*
C3	0.2252 (3)	1.20273 (15)	0.89032 (16)	0.0168 (3)
C4	0.1378 (3)	1.29089 (16)	0.97140 (16)	0.0196 (4)

H4	0.0274	1.2775	1.0335	0.023*
C5	0.2091 (3)	1.39631 (16)	0.96262 (16)	0.0195 (4)
H5	0.1520	1.4533	1.0201	0.023*
C6	0.3645 (3)	1.41882 (15)	0.86956 (16)	0.0188 (4)
C7	0.4554 (3)	1.33520 (16)	0.78900 (16)	0.0179 (4)
H7	0.5623	1.3514	0.7260	0.021*
C8	0.3901 (3)	1.22474 (15)	0.79955 (15)	0.0158 (3)
C9	0.4990 (3)	1.14094 (15)	0.71396 (15)	0.0160 (3)
H9	0.6020	1.1665	0.6539	0.019*
C10	0.5659 (3)	0.86010 (15)	0.62363 (15)	0.0162 (3)
C11	0.6967 (3)	0.78165 (15)	0.53296 (15)	0.0154 (3)
C12	0.8488 (3)	0.82057 (15)	0.44149 (16)	0.0173 (3)
C13	0.9604 (3)	0.74493 (16)	0.35706 (15)	0.0178 (4)
H13	1.0587	0.7723	0.2955	0.021*
C14	0.9313 (3)	0.62645 (16)	0.36032 (15)	0.0164 (3)
C15	1.0449 (3)	0.54640 (16)	0.27417 (15)	0.0188 (4)
H15	1.1414	0.5723	0.2107	0.023*
C16	1.0161 (3)	0.43211 (17)	0.28209 (16)	0.0206 (4)
H16	1.0941	0.3794	0.2243	0.025*
C17	0.8725 (3)	0.39148 (16)	0.37463 (17)	0.0208 (4)
H17	0.8534	0.3120	0.3787	0.025*
C18	0.7606 (3)	0.46675 (16)	0.45860 (16)	0.0181 (4)
H18	0.6647	0.4390	0.5212	0.022*
C19	0.7861 (3)	0.58623 (15)	0.45330 (15)	0.0161 (3)
C20	0.6700 (3)	0.66597 (15)	0.53765 (15)	0.0159 (3)
H20	0.5708	0.6395	0.5993	0.019*

*Atomic displacement parameters (Å<sup>2</sup>)*

	$U^{11}$	$U^{22}$	$U^{33}$	$U^{12}$	$U^{13}$	$U^{23}$
Sn1	0.01565 (7)	0.01387 (7)	0.01579 (7)	-0.00315 (4)	-0.00023 (5)	-0.00126 (4)
Cl1	0.0265 (2)	0.0153 (2)	0.0333 (3)	-0.00562 (17)	-0.0009 (2)	-0.00611 (18)
O1	0.0212 (7)	0.0156 (6)	0.0240 (7)	-0.0042 (5)	0.0037 (5)	-0.0026 (5)
O2	0.0250 (7)	0.0166 (7)	0.0237 (7)	-0.0071 (5)	0.0057 (6)	-0.0045 (5)
O3	0.0301 (8)	0.0177 (7)	0.0224 (7)	-0.0094 (6)	0.0066 (6)	-0.0051 (5)
N1	0.0150 (7)	0.0161 (7)	0.0144 (7)	-0.0019 (6)	-0.0017 (6)	-0.0022 (6)
N2	0.0166 (7)	0.0159 (7)	0.0150 (7)	-0.0024 (6)	0.0001 (6)	-0.0035 (6)
C1	0.0196 (9)	0.0252 (10)	0.0209 (9)	-0.0074 (7)	-0.0026 (7)	0.0010 (7)
C2	0.0263 (10)	0.0207 (9)	0.0238 (10)	-0.0013 (8)	-0.0079 (8)	-0.0008 (7)
C3	0.0166 (8)	0.0149 (8)	0.0190 (9)	-0.0012 (6)	-0.0050 (7)	-0.0004 (7)
C4	0.0189 (9)	0.0195 (9)	0.0174 (9)	-0.0003 (7)	-0.0005 (7)	-0.0009 (7)
C5	0.0200 (9)	0.0166 (9)	0.0205 (9)	0.0032 (7)	-0.0052 (7)	-0.0045 (7)
C6	0.0214 (9)	0.0130 (8)	0.0229 (9)	-0.0027 (7)	-0.0067 (7)	-0.0019 (7)
C7	0.0167 (8)	0.0184 (9)	0.0184 (9)	-0.0032 (7)	-0.0033 (7)	-0.0006 (7)
C8	0.0170 (8)	0.0140 (8)	0.0163 (8)	-0.0006 (6)	-0.0048 (7)	-0.0017 (6)
C9	0.0158 (8)	0.0160 (8)	0.0159 (8)	-0.0032 (6)	-0.0027 (7)	0.0003 (6)
C10	0.0161 (8)	0.0169 (9)	0.0155 (8)	-0.0025 (7)	-0.0032 (7)	-0.0008 (7)
C11	0.0143 (8)	0.0162 (8)	0.0157 (8)	-0.0018 (6)	-0.0037 (7)	-0.0021 (6)

C12	0.0192 (9)	0.0155 (8)	0.0177 (9)	-0.0041 (7)	-0.0044 (7)	0.0000 (7)
C13	0.0168 (8)	0.0208 (9)	0.0150 (8)	-0.0048 (7)	-0.0010 (7)	-0.0003 (7)
C14	0.0149 (8)	0.0200 (9)	0.0150 (8)	-0.0015 (7)	-0.0051 (7)	-0.0027 (7)
C15	0.0181 (9)	0.0228 (9)	0.0145 (9)	-0.0018 (7)	-0.0022 (7)	-0.0029 (7)
C16	0.0215 (9)	0.0214 (9)	0.0187 (9)	-0.0002 (7)	-0.0048 (7)	-0.0069 (7)
C17	0.0213 (9)	0.0161 (9)	0.0260 (10)	-0.0026 (7)	-0.0072 (8)	-0.0030 (7)
C18	0.0168 (8)	0.0184 (9)	0.0191 (9)	-0.0028 (7)	-0.0042 (7)	-0.0011 (7)
C19	0.0149 (8)	0.0174 (9)	0.0166 (8)	-0.0017 (7)	-0.0049 (7)	-0.0024 (7)
C20	0.0148 (8)	0.0169 (9)	0.0149 (8)	-0.0028 (6)	-0.0014 (7)	-0.0015 (6)

*Geometric parameters (Å, °)*

Sn1—O1	2.091 (1)	C5—H5	0.9500
Sn1—O2	2.146 (1)	C6—C7	1.371 (2)
Sn1—N1	2.190 (2)	C7—C8	1.416 (2)
Sn1—C1	2.107 (2)	C7—H7	0.9500
Sn1—C2	2.113 (2)	C8—C9	1.436 (2)
C11—C6	1.745 (2)	C9—H9	0.9500
O1—C3	1.324 (2)	C10—C11	1.479 (2)
O2—C10	1.291 (2)	C11—C20	1.382 (2)
O3—C12	1.362 (2)	C11—C12	1.427 (2)
O3—H3	0.828 (10)	C12—C13	1.374 (2)
N1—C9	1.299 (2)	C13—C14	1.420 (3)
N1—N2	1.393 (2)	C13—H13	0.9500
N2—C10	1.320 (2)	C14—C19	1.417 (3)
C1—H1A	0.9800	C14—C15	1.421 (2)
C1—H1B	0.9800	C15—C16	1.369 (3)
C1—H1C	0.9800	C15—H15	0.9500
C2—H2A	0.9800	C16—C17	1.409 (3)
C2—H2B	0.9800	C16—H16	0.9500
C2—H2C	0.9800	C17—C18	1.368 (3)
C3—C8	1.411 (3)	C17—H17	0.9500
C3—C4	1.408 (2)	C18—C19	1.423 (3)
C4—C5	1.380 (3)	C18—H18	0.9500
C4—H4	0.9500	C19—C20	1.410 (2)
C5—C6	1.389 (3)	C20—H20	0.9500
O1—Sn1—C1	95.03 (7)	C6—C7—H7	120.0
O1—Sn1—C2	97.04 (7)	C8—C7—H7	120.0
C1—Sn1—C2	127.30 (8)	C3—C8—C7	119.79 (16)
O1—Sn1—O2	155.22 (5)	C3—C8—C9	123.84 (16)
C1—Sn1—O2	94.59 (7)	C7—C8—C9	116.37 (16)
C2—Sn1—O2	95.16 (7)	N1—C9—C8	126.20 (16)
O1—Sn1—N1	82.77 (5)	N1—C9—H9	116.9
C1—Sn1—N1	122.40 (7)	C8—C9—H9	116.9
C2—Sn1—N1	109.96 (7)	O2—C10—N2	124.04 (16)
O2—Sn1—N1	72.80 (5)	O2—C10—C11	118.68 (15)
C3—O1—Sn1	133.18 (12)	N2—C10—C11	117.28 (16)

C10—O2—Sn1	115.30 (11)	C20—C11—C12	118.99 (16)
C12—O3—H3	108.0 (18)	C20—C11—C10	118.33 (16)
C9—N1—N2	114.99 (15)	C12—C11—C10	122.69 (16)
C9—N1—Sn1	129.10 (12)	O3—C12—C13	117.62 (16)
N2—N1—Sn1	115.88 (11)	O3—C12—C11	122.19 (16)
C10—N2—N1	111.96 (14)	C13—C12—C11	120.18 (16)
Sn1—C1—H1A	109.5	C12—C13—C14	121.08 (17)
Sn1—C1—H1B	109.5	C12—C13—H13	119.5
H1A—C1—H1B	109.5	C14—C13—H13	119.5
Sn1—C1—H1C	109.5	C19—C14—C15	118.84 (16)
H1A—C1—H1C	109.5	C19—C14—C13	118.96 (16)
H1B—C1—H1C	109.5	C15—C14—C13	122.20 (17)
Sn1—C2—H2A	109.5	C16—C15—C14	120.38 (17)
Sn1—C2—H2B	109.5	C16—C15—H15	119.8
H2A—C2—H2B	109.5	C14—C15—H15	119.8
Sn1—C2—H2C	109.5	C15—C16—C17	121.04 (17)
H2A—C2—H2C	109.5	C15—C16—H16	119.5
H2B—C2—H2C	109.5	C17—C16—H16	119.5
O1—C3—C8	123.74 (16)	C18—C17—C16	119.80 (17)
O1—C3—C4	118.25 (16)	C18—C17—H17	120.1
C8—C3—C4	118.00 (16)	C16—C17—H17	120.1
C5—C4—C3	121.42 (17)	C17—C18—C19	120.79 (17)
C5—C4—H4	119.3	C17—C18—H18	119.6
C3—C4—H4	119.3	C19—C18—H18	119.6
C4—C5—C6	119.82 (17)	C20—C19—C14	119.00 (16)
C4—C5—H5	120.1	C20—C19—C18	121.86 (17)
C6—C5—H5	120.1	C14—C19—C18	119.14 (16)
C7—C6—C5	120.72 (17)	C11—C20—C19	121.72 (17)
C7—C6—C11	120.41 (15)	C11—C20—H20	119.1
C5—C6—C11	118.83 (14)	C19—C20—H20	119.1
C6—C7—C8	120.09 (17)		
C1—Sn1—O1—C3	-134.26 (17)	Sn1—N1—C9—C8	0.8 (3)
C2—Sn1—O1—C3	97.15 (17)	C3—C8—C9—N1	-3.8 (3)
O2—Sn1—O1—C3	-21.8 (2)	C7—C8—C9—N1	176.64 (17)
N1—Sn1—O1—C3	-12.18 (16)	Sn1—O2—C10—N2	-1.3 (2)
O1—Sn1—O2—C10	11.1 (2)	Sn1—O2—C10—C11	178.74 (12)
C1—Sn1—O2—C10	123.65 (14)	N1—N2—C10—O2	0.4 (2)
C2—Sn1—O2—C10	-108.21 (14)	N1—N2—C10—C11	-179.60 (14)
N1—Sn1—O2—C10	1.11 (12)	O2—C10—C11—C20	-3.6 (2)
O1—Sn1—N1—C9	5.00 (15)	N2—C10—C11—C20	176.39 (16)
C1—Sn1—N1—C9	96.39 (16)	O2—C10—C11—C12	176.49 (17)
C2—Sn1—N1—C9	-89.90 (16)	N2—C10—C11—C12	-3.5 (3)
O2—Sn1—N1—C9	-179.19 (17)	C20—C11—C12—O3	-178.33 (17)
O1—Sn1—N1—N2	-176.74 (12)	C10—C11—C12—O3	1.6 (3)
C1—Sn1—N1—N2	-85.36 (13)	C20—C11—C12—C13	2.7 (3)
C2—Sn1—N1—N2	88.36 (12)	C10—C11—C12—C13	-177.41 (16)
O2—Sn1—N1—N2	-0.93 (11)	O3—C12—C13—C14	179.31 (16)

C9—N1—N2—C10	179.15 (15)	C11—C12—C13—C14	-1.7 (3)
Sn1—N1—N2—C10	0.64 (18)	C12—C13—C14—C19	-0.8 (3)
Sn1—O1—C3—C8	13.4 (3)	C12—C13—C14—C15	-179.92 (17)
Sn1—O1—C3—C4	-166.82 (13)	C19—C14—C15—C16	-0.9 (3)
O1—C3—C4—C5	-179.32 (17)	C13—C14—C15—C16	178.26 (17)
C8—C3—C4—C5	0.5 (3)	C14—C15—C16—C17	0.7 (3)
C3—C4—C5—C6	2.8 (3)	C15—C16—C17—C18	-0.5 (3)
C4—C5—C6—C7	-3.3 (3)	C16—C17—C18—C19	0.5 (3)
C4—C5—C6—C11	174.59 (14)	C15—C14—C19—C20	-178.65 (16)
C5—C6—C7—C8	0.5 (3)	C13—C14—C19—C20	2.2 (2)
C11—C6—C7—C8	-177.37 (14)	C15—C14—C19—C18	0.9 (2)
O1—C3—C8—C7	176.52 (17)	C13—C14—C19—C18	-178.24 (16)
C4—C3—C8—C7	-3.3 (3)	C17—C18—C19—C20	178.81 (17)
O1—C3—C8—C9	-3.0 (3)	C17—C18—C19—C14	-0.8 (3)
C4—C3—C8—C9	177.20 (16)	C12—C11—C20—C19	-1.3 (3)
C6—C7—C8—C3	2.9 (3)	C10—C11—C20—C19	178.82 (15)
C6—C7—C8—C9	-177.61 (16)	C14—C19—C20—C11	-1.1 (3)
N2—N1—C9—C8	-177.52 (16)	C18—C19—C20—C11	179.27 (17)

*Hydrogen-bond geometry (Å, °)*

<i>D—H...A</i>	<i>D—H</i>	<i>H...A</i>	<i>D...A</i>	<i>D—H...A</i>
O3—H3...N2	0.83 (1)	1.86 (2)	2.604 (2)	148 (2)