

Acta Crystallographica Section E

Structure Reports

Online

ISSN 1600-5368

4,4'-Di-3-pyridyl-2,2'-dithiodipyrimidine

Jun-Feng Ji, Lei Li and Hai-Bin Zhu*

School of Chemistry and Chemical Engineering, Southeast University, Nanjing 211189, People's Republic of China

Correspondence e-mail: zhuhaibin@seu.edu.cn

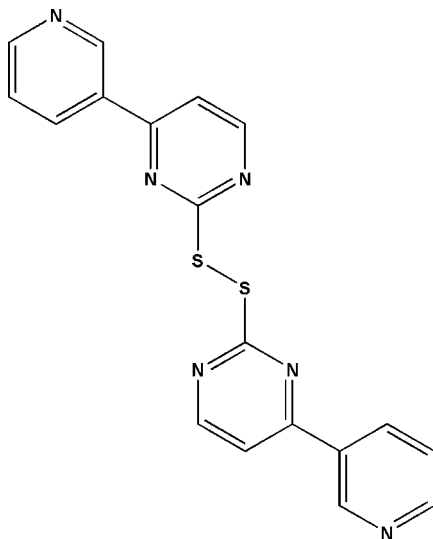
Received 23 April 2009; accepted 5 May 2009

 Key indicators: single-crystal X-ray study; $T = 298$ K; mean $\sigma(\text{C}-\text{C}) = 0.003$ Å; R factor = 0.039; wR factor = 0.106; data-to-parameter ratio = 17.7.

The asymmetric unit of the title compound, $\text{C}_{18}\text{H}_{12}\text{N}_6\text{S}_2$, contains one half-molecule situated on a twofold rotational axis that passes through the mid-point of the S—S bond. In the molecule, the C—S—S—C torsion angle is $81.33(7)^\circ$. The crystal packing exhibits no significantly short intermolecular contacts.

Related literature

For general background to heterocyclic disulfides, see Horikoshi & Mochida (2006). For related crystal structures, see: Higashi *et al.* (1978); Tabellion *et al.* (2001).



Experimental

Crystal data

$\text{C}_{18}\text{H}_{12}\text{N}_6\text{S}_2$
 $M_r = 376.48$
 Monoclinic, $C2/c$
 $a = 19.480(3)$ Å
 $b = 5.4192(9)$ Å
 $c = 17.979(3)$ Å
 $\beta = 115.034(2)^\circ$

$V = 1719.6(5)$ Å³
 $Z = 4$
 Mo $K\alpha$ radiation
 $\mu = 0.33$ mm⁻¹
 $T = 298$ K
 $0.12 \times 0.11 \times 0.09$ mm

Data collection

Bruker APEXII CCD area-detector diffractometer
 Absorption correction: multi-scan (SADABS; Bruker, 2001)
 $T_{\min} = 0.884$, $T_{\max} = 0.920$
 (expected range = 0.933–0.971)

5331 measured reflections
 2091 independent reflections
 1590 reflections with $I > 2\sigma(I)$
 $R_{\text{int}} = 0.054$

Refinement

$R[F^2 > 2\sigma(F^2)] = 0.039$
 $wR(F^2) = 0.106$
 $S = 1.07$
 2091 reflections

118 parameters
 H-atom parameters constrained
 $\Delta\rho_{\max} = 0.20$ e Å⁻³
 $\Delta\rho_{\min} = -0.25$ e Å⁻³

Data collection: APEX2 (Bruker, 2007); cell refinement: SAINT-Plus (Bruker, 2007); data reduction: SAINT-Plus; program(s) used to solve structure: SHELXS97 (Sheldrick, 2008); program(s) used to refine structure: SHELXL97 (Sheldrick, 2008); molecular graphics: SHELXTL (Sheldrick, 2008); software used to prepare material for publication: SHELXTL.

The authors acknowledge the financial support of the National Natural Science Foundation of China (grant No. 20801011) and the Young Teachers' Starting Fund of Southeast University.

Supplementary data and figures for this paper are available from the IUCr electronic archives (Reference: CV2555).

References

- Bruker (2001). *SADABS*. Bruker AXS Inc., Madison, Wisconsin, USA.
 Bruker (2007). *APEX2* and *SAINTE-Plus*. Bruker AXS Inc., Madison, Wisconsin, USA.
 Higashi, L. S., Lundeen, M. & Seff, J. (1978). *J. Am. Chem. Soc.* **100**, 8101–8106.
 Horikoshi, R. & Mochida, T. (2006). *Coord. Chem. Rev.* **250**, 2595–2609.
 Sheldrick, G. M. (2008). *Acta Cryst.* **A64**, 112–122.
 Tabellion, F. M., Seidel, S. R., Arif, A. M. & Stang, P. J. (2001). *J. Am. Chem. Soc.* **123**, 7740–7741.

supporting information

Acta Cryst. (2009). E65, o1253 [doi:10.1107/S1600536809016869]

4,4'-Di-3-pyridyl-2,2'-dithiodiprimidine

Jun-Feng Ji, Lei Li and Hai-Bin Zhu

S1. Comment

Heterocyclic disulfide ligands have attracted considerable attention due to its conformationally defined torsion angle and axial chirality (Horikoshi & Mochida, 2006). Herein, we report the molecular structure of the title compound (I) - the newly synthesized disulfide ligand.

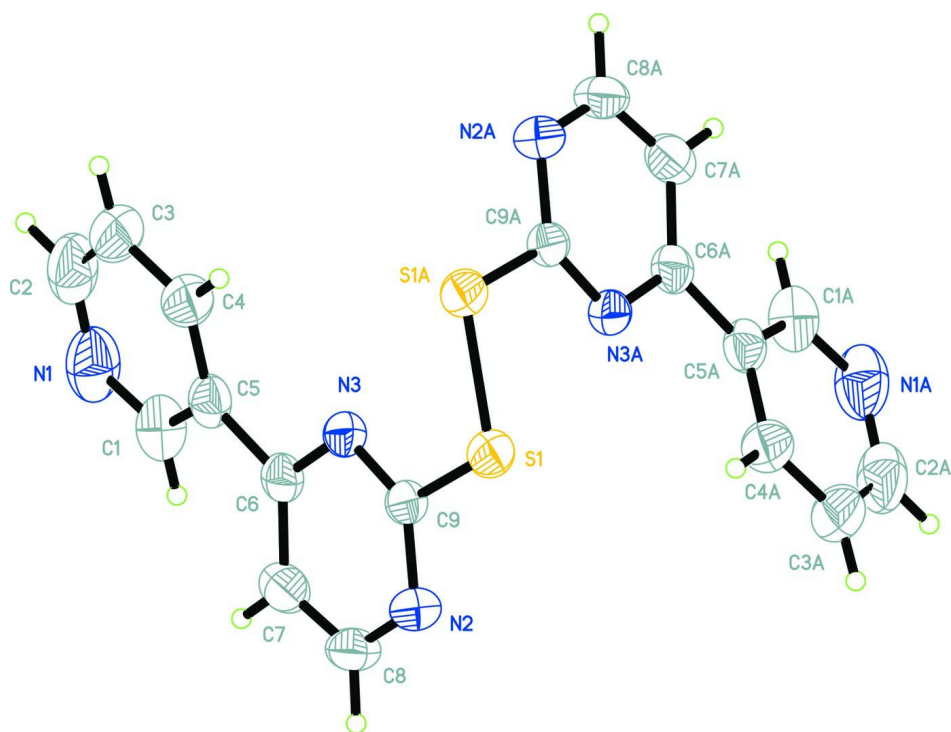
In (I) (Fig. 1), the dihedral angle between the pyrimidinyl and pyridinyl rings is $17.62(6)^\circ$. The C—S—S—C torsion angle of $81.33(7)^\circ$ and S—S bond length of $2.0148(8) \text{ \AA}$ are comparable to those of typical aromatic disulfides (Higashi *et al.*, 1978; Tabellion *et al.*, 2001).

S2. Experimental

A solution of SO_2Cl_2 (0.5 mL) in CH_2Cl_2 (20 ml) was added dropwise into the suspension containing 4-(pyridin-3-yl)pyrimidine-2-thiol (1.89 g) and 30 ml of CH_2Cl_2 . Upon addition, the mixture was stirred at room temperature for 30 min. The solid was collected by filtration and dissolved into 30 ml of H_2O . The solution PH was adjusted into the range of 8–9 to give white precipitates. Single crystals suitable for X-ray diffraction analysis were obtained by slow evaporation of the CH_2Cl_2 solution of the title compound.

S3. Refinement

All H atoms were positioned geometrically and allowed to ride on their parent atoms, with C—H = 0.93 \AA and $U_{\text{iso}}(\text{H}) = 1.2U_{\text{eq}}(\text{C})$.

**Figure 1**

The molecular structure of the title compound showing the atomic numbering and 40% probability displacement ellipsoids [symmetry code: (A) $-x, y, 1/2 - z$].

4,4'-Di-3-pyridyl-2,2'-dithiodiprimidine

Crystal data

$C_{18}H_{12}N_6S_2$

$M_r = 376.48$

Monoclinic, $C2/c$

Hall symbol: $-C 2yc$

$a = 19.480 (3) \text{ \AA}$

$b = 5.4192 (9) \text{ \AA}$

$c = 17.979 (3) \text{ \AA}$

$\beta = 115.034 (2)^\circ$

$V = 1719.6 (5) \text{ \AA}^3$

$Z = 4$

$F(000) = 776$

$D_x = 1.454 \text{ Mg m}^{-3}$

Mo $K\alpha$ radiation, $\lambda = 0.71073 \text{ \AA}$

Cell parameters from 2091 reflections

$\theta = 2.3\text{--}25.5^\circ$

$\mu = 0.33 \text{ mm}^{-1}$

$T = 298 \text{ K}$

Block, yellow

$0.12 \times 0.11 \times 0.09 \text{ mm}$

Data collection

Bruker APEXII CCD area-detector
diffractometer

Radiation source: fine-focus sealed tube

Graphite monochromator

φ and ω scans

Absorption correction: multi-scan

(*SADABS*; Bruker, 2001)

$T_{\min} = 0.884$, $T_{\max} = 0.920$

5331 measured reflections

2091 independent reflections

1590 reflections with $I > 2\sigma(I)$

$R_{\text{int}} = 0.054$

$\theta_{\max} = 28.2^\circ$, $\theta_{\min} = 2.3^\circ$

$h = -15 \rightarrow 25$

$k = -7 \rightarrow 6$

$l = -23 \rightarrow 21$

Refinement

Refinement on F^2
 Least-squares matrix: full
 $R[F^2 > 2\sigma(F^2)] = 0.039$
 $wR(F^2) = 0.106$
 $S = 1.07$
 2091 reflections
 118 parameters
 0 restraints
 Primary atom site location: structure-invariant
 direct methods

Secondary atom site location: difference Fourier
 map
 Hydrogen site location: inferred from
 neighbouring sites
 H-atom parameters constrained
 $w = 1/[\sigma^2(F_o^2) + (0.051P)^2]$
 where $P = (F_o^2 + 2F_c^2)/3$
 $(\Delta/\sigma)_{\max} < 0.001$
 $\Delta\rho_{\max} = 0.20 \text{ e } \text{\AA}^{-3}$
 $\Delta\rho_{\min} = -0.25 \text{ e } \text{\AA}^{-3}$

Special details

Geometry. All e.s.d.'s (except the e.s.d. in the dihedral angle between two l.s. planes) are estimated using the full covariance matrix. The cell e.s.d.'s are taken into account individually in the estimation of e.s.d.'s in distances, angles and torsion angles; correlations between e.s.d.'s in cell parameters are only used when they are defined by crystal symmetry. An approximate (isotropic) treatment of cell e.s.d.'s is used for estimating e.s.d.'s involving l.s. planes.

Refinement. Refinement of F^2 against ALL reflections. The weighted R -factor wR and goodness of fit S are based on F^2 , conventional R -factors R are based on F , with F set to zero for negative F^2 . The threshold expression of $F^2 > \sigma(F^2)$ is used only for calculating R -factors(gt) etc. and is not relevant to the choice of reflections for refinement. R -factors based on F^2 are statistically about twice as large as those based on F , and R -factors based on ALL data will be even larger.

Fractional atomic coordinates and isotropic or equivalent isotropic displacement parameters (\AA^2)

	x	y	z	$U_{\text{iso}}^*/U_{\text{eq}}$
S1	0.03745 (2)	0.82831 (7)	0.22489 (2)	0.05022 (17)
N3	0.09221 (7)	0.4611 (2)	0.33598 (7)	0.0431 (3)
C5	0.13449 (9)	0.1539 (3)	0.44158 (9)	0.0494 (4)
C6	0.14360 (8)	0.2851 (3)	0.37363 (9)	0.0449 (4)
N2	0.15519 (8)	0.5576 (3)	0.25070 (8)	0.0560 (4)
C9	0.10152 (8)	0.5858 (3)	0.27763 (8)	0.0436 (3)
C7	0.20210 (9)	0.2385 (3)	0.35106 (10)	0.0549 (4)
H7A	0.2380	0.1168	0.3769	0.066*
C8	0.20481 (10)	0.3797 (3)	0.28883 (11)	0.0599 (5)
H8A	0.2434	0.3493	0.2725	0.072*
C4	0.09033 (11)	0.2523 (4)	0.47734 (10)	0.0617 (5)
H4A	0.0642	0.3995	0.4582	0.074*
C1	0.17081 (12)	-0.0663 (3)	0.47231 (10)	0.0668 (5)
H1A	0.2002	-0.1334	0.4479	0.080*
N1	0.16688 (12)	-0.1900 (3)	0.53450 (11)	0.0827 (6)
C3	0.08571 (12)	0.1278 (5)	0.54219 (11)	0.0771 (6)
H3B	0.0569	0.1906	0.5679	0.092*
C2	0.12428 (14)	-0.0895 (5)	0.56778 (12)	0.0858 (7)
H2B	0.1204	-0.1720	0.6112	0.103*

Atomic displacement parameters (\AA^2)

	U^{11}	U^{22}	U^{33}	U^{12}	U^{13}	U^{23}
S1	0.0489 (3)	0.0576 (3)	0.0448 (2)	-0.00386 (18)	0.02041 (19)	0.00495 (17)
N3	0.0412 (7)	0.0496 (7)	0.0378 (6)	-0.0045 (6)	0.0159 (5)	-0.0041 (5)

C5	0.0477 (9)	0.0511 (9)	0.0405 (8)	-0.0095 (7)	0.0101 (7)	-0.0034 (6)
C6	0.0417 (8)	0.0475 (8)	0.0394 (8)	-0.0074 (7)	0.0113 (7)	-0.0102 (6)
N2	0.0466 (8)	0.0760 (10)	0.0524 (8)	-0.0031 (7)	0.0278 (7)	-0.0019 (7)
C9	0.0389 (7)	0.0533 (8)	0.0375 (7)	-0.0080 (7)	0.0150 (6)	-0.0080 (6)
C7	0.0427 (9)	0.0596 (9)	0.0578 (10)	0.0013 (8)	0.0170 (8)	-0.0079 (8)
C8	0.0454 (9)	0.0795 (12)	0.0626 (10)	-0.0025 (9)	0.0304 (8)	-0.0114 (9)
C4	0.0586 (11)	0.0721 (11)	0.0550 (10)	-0.0076 (9)	0.0246 (9)	0.0058 (8)
C1	0.0716 (12)	0.0599 (11)	0.0551 (10)	-0.0021 (10)	0.0133 (9)	0.0008 (9)
N1	0.0928 (14)	0.0723 (11)	0.0631 (10)	-0.0090 (10)	0.0137 (10)	0.0172 (8)
C3	0.0734 (14)	0.1040 (16)	0.0558 (11)	-0.0123 (12)	0.0292 (10)	0.0095 (10)
C2	0.0838 (16)	0.1026 (17)	0.0541 (11)	-0.0319 (14)	0.0129 (11)	0.0196 (11)

Geometric parameters (Å, °)

S1—C9	1.7840 (16)	C7—H7A	0.9300
S1—S1 ⁱ	2.0148 (8)	C8—H8A	0.9300
N3—C9	1.3233 (17)	C4—C3	1.383 (2)
N3—C6	1.3402 (19)	C4—H4A	0.9300
C5—C1	1.378 (2)	C1—N1	1.333 (2)
C5—C4	1.380 (2)	C1—H1A	0.9300
C5—C6	1.488 (2)	N1—C2	1.328 (3)
C6—C7	1.385 (2)	C3—C2	1.367 (3)
N2—C9	1.334 (2)	C3—H3B	0.9300
N2—C8	1.332 (2)	C2—H2B	0.9300
C7—C8	1.375 (2)		
C9—S1—S1 ⁱ	103.78 (5)	N2—C8—H8A	118.2
C9—N3—C6	116.12 (13)	C7—C8—H8A	118.2
C1—C5—C4	117.59 (17)	C5—C4—C3	118.7 (2)
C1—C5—C6	121.58 (16)	C5—C4—H4A	120.7
C4—C5—C6	120.81 (15)	C3—C4—H4A	120.7
N3—C6—C7	120.87 (14)	N1—C1—C5	124.72 (19)
N3—C6—C5	115.57 (13)	N1—C1—H1A	117.6
C7—C6—C5	123.53 (15)	C5—C1—H1A	117.6
C9—N2—C8	113.93 (13)	C2—N1—C1	116.12 (18)
N3—C9—N2	128.37 (15)	C2—C3—C4	118.8 (2)
N3—C9—S1	119.86 (11)	C2—C3—H3B	120.6
N2—C9—S1	111.77 (11)	C4—C3—H3B	120.6
C8—C7—C6	117.17 (16)	N1—C2—C3	124.10 (19)
C8—C7—H7A	121.4	N1—C2—H2B	118.0
C6—C7—H7A	121.4	C3—C2—H2B	118.0
N2—C8—C7	123.54 (15)		

Symmetry code: (i) $-x, y, -z+1/2$.