

Acta Crystallographica Section E

Structure Reports

Online

ISSN 1600-5368

Bis[2-(3-bromopropoxy)-5-methylphenyl]methane

 Zahid Hussain,^a Muhammad Raza Shah,^a Itrat Anis^a and Seik Weng Ng^{b*}
^aHEJ Research Institute of Chemistry, International Center for Chemical and Biological Sciences, University of Karachi, Karachi 75270, Pakistan, and

^bDepartment of Chemistry, University of Malaya, 50603 Kuala Lumpur, Malaysia

Correspondence e-mail: seikweng@um.edu.my

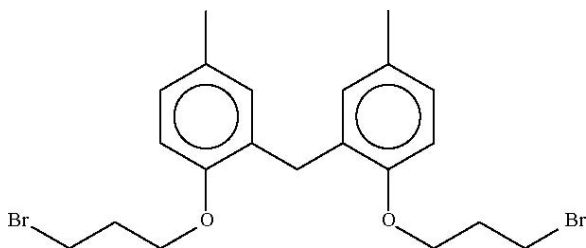
Received 19 March 2009; accepted 23 March 2009

 Key indicators: single-crystal X-ray study; $T = 423$ K; mean $\sigma(\text{C}-\text{C}) = 0.003$ Å; R factor = 0.031; wR factor = 0.079; data-to-parameter ratio = 20.3.

The title molecule, $\text{C}_{21}\text{H}_{26}\text{Br}_2\text{O}_2$, is a substituted diphenylmethane derivative whose angle at the methylene carbon is $115.0(2)^\circ$.

Related literature

For the structure of bis[2-(3-bromopropoxy)-5-*tert*-butylphenyl]methane, see: Yordanov *et al.* (1995a,b).



Experimental

Crystal data

 $\text{C}_{21}\text{H}_{26}\text{Br}_2\text{O}_2$
 $M_r = 470.24$

 Monoclinic, $P2_1/c$
 $a = 12.0054(2)$ Å

 $b = 11.9336(2)$ Å

 $c = 14.2827(2)$ Å

 $\beta = 100.777(1)^\circ$
 $V = 2010.16(6)$ Å³
 $Z = 4$

 Mo $K\alpha$ radiation

 $\mu = 4.04$ mm⁻¹
 $T = 423$ K

 $0.32 \times 0.26 \times 0.08$ mm

Data collection

Bruker SMART APEX

diffractometer

Absorption correction: multi-scan

 (*SADABS*; Sheldrick, 1996)

 $T_{\min} = 0.358$, $T_{\max} = 0.738$

18780 measured reflections

4618 independent reflections

 3627 reflections with $I > 2\sigma(I)$
 $R_{\text{int}} = 0.046$

Refinement

 $R[F^2 > 2\sigma(F^2)] = 0.031$
 $wR(F^2) = 0.079$
 $S = 1.01$

4618 reflections

228 parameters

H-atom parameters constrained

 $\Delta\rho_{\text{max}} = 0.48$ e Å⁻³
 $\Delta\rho_{\text{min}} = -0.62$ e Å⁻³

Data collection: *APEX2* (Bruker, 2008); cell refinement: *SAINT* (Bruker, 2008); data reduction: *SAINT*; program(s) used to solve structure: *SHELXS97* (Sheldrick, 2008); program(s) used to refine structure: *SHELXL97* (Sheldrick, 2008); molecular graphics: *X-SEED* (Barbour, 2001); software used to prepare material for publication: *publCIF* (Westrip, 2009).

We thank the Higher Education Commission of Pakistan and the University of Malaya for supporting this study.

Supplementary data and figures for this paper are available from the IUCr electronic archives (Reference: TK2401).

References

- Barbour, L. J. (2001). *J. Supramol. Chem.* **1**, 189–191.
 Bruker (2008). *APEX2* and *SAINT*. Bruker AXS Inc., Madison, Wisconsin, USA.
 Sheldrick, G. M. (1996). *SADABS*. University of Göttingen, Germany.
 Sheldrick, G. M. (2008). *Acta Cryst.* **A64**, 112–122.
 Westrip, S. P. (2009). *publCIF*. In preparation.
 Yordanov, A. T., Mague, J. T. & Roundhill, M. D. (1995a). *Inorg. Chem.* **34**, 5804–5807.
 Yordanov, A. T., Mague, J. T. & Roundhill, M. D. (1995b). *Inorg. Chim. Acta*, **240**, 441–446.

supporting information

Acta Cryst. (2009). E65, o907 [doi:10.1107/S1600536809010587]

Bis[2-(3-bromopropoxy)-5-methylphenyl]methane

Zahid Hussain, Muhammad Raza Shah, Itrat Anis and Seik Weng Ng

S1. Experimental

Potassium carbonate (414 mg, 3 mmol) and 2,2'-methylenebis(4-methylphenol) (228 mg, 1 mmol) in acetone (15 ml) were treated with 1,3-dibromopropane (1.05 g, 5 mmol) at 323 K for 3 h. The solvent was removed under reduced pressure and the residue was dissolved in a mixture of water (50 ml) and dichloromethane (50 ml). The two phases were separated and the aqueous layer extracted with dichloromethane. The dichloromethane solution was dried and the solvent allowed to evaporate slowly to give colorless crystals (182 mg, 80% yield).

S2. Refinement

Carbon-bound H-atoms were placed in calculated positions (C—H 0.93 to 0.99 Å) and were included in the refinement in the riding model approximation, with $U(\text{H}) = 1.2$ to $1.5U(\text{C})$.

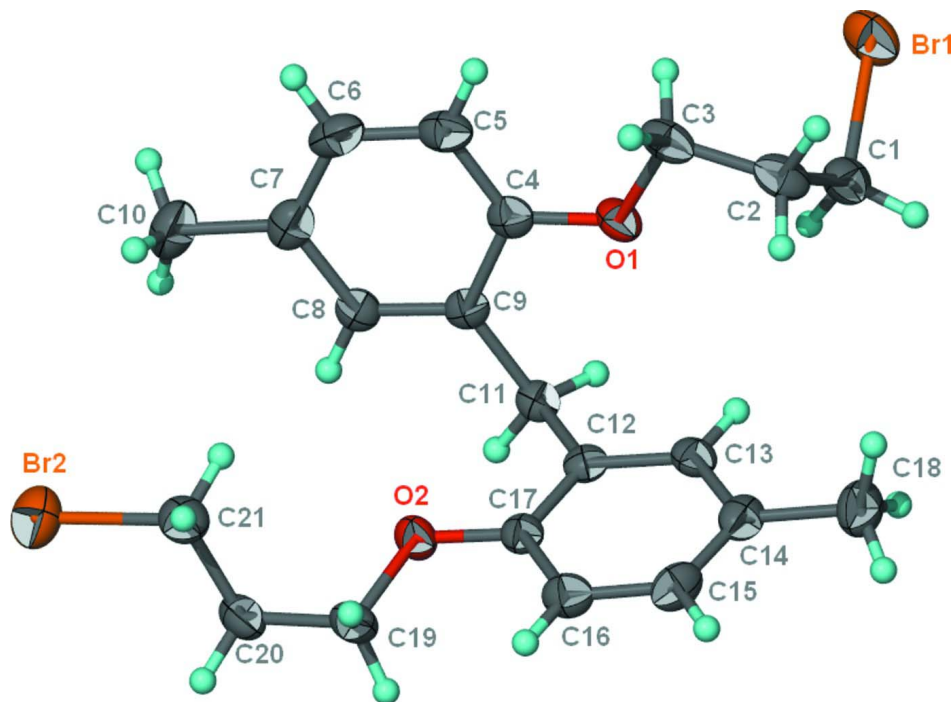


Figure 1

Thermal ellipsoid plot (Barbour, 2001) plot of $\text{C}_{21}\text{H}_{26}\text{O}_2\text{Br}_2$ at the 70% probability level; hydrogen atoms are drawn as spheres of arbitrary radius.

Bis[2-(3-bromopropoxy)-5-methylphenyl]methane*Crystal data*C₂₁H₂₆Br₂O₂ $M_r = 470.24$ Monoclinic, $P2_1/c$

Hall symbol: -P 2ybc

 $a = 12.0054 (2) \text{ \AA}$ $b = 11.9336 (2) \text{ \AA}$ $c = 14.2827 (2) \text{ \AA}$ $\beta = 100.777 (1)^\circ$ $V = 2010.16 (6) \text{ \AA}^3$ $Z = 4$ $F(000) = 952$ $D_x = 1.554 \text{ Mg m}^{-3}$ Mo $K\alpha$ radiation, $\lambda = 0.71073 \text{ \AA}$

Cell parameters from 5910 reflections

 $\theta = 2.4\text{--}28.1^\circ$ $\mu = 4.04 \text{ mm}^{-1}$ $T = 423 \text{ K}$

Plate, colorless

 $0.32 \times 0.26 \times 0.08 \text{ mm}$ *Data collection*

Bruker SMART APEX

diffractometer

Radiation source: fine-focus sealed tube

Graphite monochromator

 ω scans

Absorption correction: multi-scan

(SADABS; Sheldrick, 1996)

 $T_{\min} = 0.358$, $T_{\max} = 0.738$

18780 measured reflections

4618 independent reflections

3627 reflections with $I > 2\sigma(I)$ $R_{\text{int}} = 0.046$ $\theta_{\max} = 27.5^\circ$, $\theta_{\min} = 1.7^\circ$ $h = -15 \rightarrow 15$ $k = -15 \rightarrow 15$ $l = -18 \rightarrow 18$ *Refinement*Refinement on F^2

Least-squares matrix: full

 $R[F^2 > 2\sigma(F^2)] = 0.031$ $wR(F^2) = 0.079$ $S = 1.01$

4618 reflections

228 parameters

0 restraints

Primary atom site location: structure-invariant

direct methods

Secondary atom site location: difference Fourier map

Hydrogen site location: inferred from neighbouring sites

H-atom parameters constrained

 $w = 1/[\sigma^2(F_o^2) + (0.034P)^2 + 1.182P]$ where $P = (F_o^2 + 2F_c^2)/3$ $(\Delta/\sigma)_{\max} = 0.001$ $\Delta\rho_{\max} = 0.48 \text{ e \AA}^{-3}$ $\Delta\rho_{\min} = -0.62 \text{ e \AA}^{-3}$ *Fractional atomic coordinates and isotropic or equivalent isotropic displacement parameters (\AA^2)*

	<i>x</i>	<i>y</i>	<i>z</i>	$U_{\text{iso}}^*/U_{\text{eq}}$
Br1	0.89529 (2)	0.57379 (2)	0.328900 (19)	0.03798 (9)
Br2	-0.01238 (2)	0.17450 (2)	0.39338 (2)	0.04079 (9)
O1	0.61771 (14)	0.43666 (12)	0.39928 (11)	0.0255 (3)
O2	0.38760 (13)	0.14783 (13)	0.48653 (10)	0.0244 (3)
C1	0.8608 (2)	0.4599 (2)	0.41785 (17)	0.0291 (5)
H1A	0.8199	0.3970	0.3814	0.035*
H1B	0.9325	0.4303	0.4552	0.035*
C2	0.7896 (2)	0.5065 (2)	0.48479 (16)	0.0290 (5)
H2A	0.7851	0.4499	0.5347	0.035*
H2B	0.8280	0.5734	0.5167	0.035*
C3	0.6711 (2)	0.53852 (19)	0.43790 (17)	0.0277 (5)
H3A	0.6297	0.5714	0.4851	0.033*
H3B	0.6728	0.5940	0.3866	0.033*

C4	0.5034 (2)	0.43657 (19)	0.36428 (15)	0.0229 (5)
C5	0.4379 (2)	0.5323 (2)	0.34459 (16)	0.0283 (5)
H5	0.4712	0.6042	0.3575	0.034*
C6	0.3231 (2)	0.5226 (2)	0.30578 (17)	0.0306 (5)
H6	0.2789	0.5886	0.2918	0.037*
C7	0.2715 (2)	0.4188 (2)	0.28700 (15)	0.0270 (5)
C8	0.3394 (2)	0.32366 (19)	0.30820 (15)	0.0226 (5)
H8	0.3055	0.2519	0.2960	0.027*
C9	0.45441 (19)	0.32978 (18)	0.34640 (14)	0.0206 (4)
C10	0.1470 (2)	0.4079 (2)	0.24627 (18)	0.0360 (6)
H10A	0.1241	0.4675	0.1994	0.054*
H10B	0.1035	0.4143	0.2977	0.054*
H10C	0.1323	0.3348	0.2152	0.054*
C11	0.52599 (19)	0.22530 (18)	0.36524 (14)	0.0208 (4)
H11A	0.5910	0.2323	0.3320	0.025*
H11B	0.4801	0.1605	0.3372	0.025*
C12	0.57131 (19)	0.20078 (17)	0.46953 (14)	0.0198 (4)
C13	0.6855 (2)	0.21308 (18)	0.50828 (15)	0.0231 (5)
H13	0.7348	0.2410	0.4688	0.028*
C14	0.7311 (2)	0.18620 (19)	0.60292 (16)	0.0257 (5)
C15	0.6577 (2)	0.1448 (2)	0.65809 (16)	0.0281 (5)
H15	0.6867	0.1251	0.7225	0.034*
C16	0.5428 (2)	0.1311 (2)	0.62258 (16)	0.0269 (5)
H16	0.4941	0.1028	0.6623	0.032*
C17	0.49961 (19)	0.15936 (17)	0.52813 (15)	0.0213 (5)
C18	0.8558 (2)	0.2004 (2)	0.64178 (18)	0.0346 (6)
H18A	0.8995	0.1754	0.5941	0.052*
H18B	0.8771	0.1556	0.6998	0.052*
H18C	0.8722	0.2796	0.6567	0.052*
C19	0.3171 (2)	0.0874 (2)	0.53991 (17)	0.0278 (5)
H19A	0.3126	0.1280	0.5996	0.033*
H19B	0.3492	0.0121	0.5568	0.033*
C20	0.2007 (2)	0.07720 (19)	0.47873 (18)	0.0290 (5)
H20A	0.2074	0.0462	0.4157	0.035*
H20B	0.1545	0.0246	0.5091	0.035*
C21	0.1424 (2)	0.1886 (2)	0.46541 (18)	0.0298 (5)
H21A	0.1860	0.2396	0.4311	0.036*
H21B	0.1404	0.2219	0.5286	0.036*

Atomic displacement parameters (\AA^2)

	U^{11}	U^{22}	U^{33}	U^{12}	U^{13}	U^{23}
Br1	0.03685 (16)	0.04009 (16)	0.04195 (15)	-0.00652 (11)	0.02015 (12)	-0.00002 (11)
Br2	0.03188 (16)	0.04527 (17)	0.04445 (16)	0.00566 (12)	0.00512 (12)	-0.00249 (12)
O1	0.0253 (9)	0.0198 (8)	0.0330 (8)	-0.0047 (6)	0.0098 (7)	-0.0048 (6)
O2	0.0219 (8)	0.0286 (9)	0.0237 (8)	-0.0027 (7)	0.0068 (7)	0.0033 (6)
C1	0.0291 (13)	0.0257 (12)	0.0311 (12)	-0.0052 (10)	0.0018 (10)	-0.0029 (10)
C2	0.0379 (14)	0.0246 (13)	0.0247 (11)	-0.0104 (10)	0.0060 (10)	-0.0057 (9)

C3	0.0350 (14)	0.0217 (12)	0.0297 (12)	-0.0072 (10)	0.0149 (10)	-0.0062 (9)
C4	0.0262 (12)	0.0245 (12)	0.0207 (10)	0.0005 (9)	0.0111 (9)	0.0017 (9)
C5	0.0365 (14)	0.0224 (12)	0.0296 (12)	0.0019 (10)	0.0152 (10)	0.0022 (9)
C6	0.0384 (15)	0.0274 (13)	0.0290 (12)	0.0102 (11)	0.0141 (11)	0.0075 (10)
C7	0.0273 (13)	0.0347 (13)	0.0203 (10)	0.0050 (10)	0.0080 (9)	0.0023 (9)
C8	0.0250 (12)	0.0248 (11)	0.0191 (10)	-0.0009 (9)	0.0067 (9)	0.0006 (9)
C9	0.0251 (12)	0.0225 (11)	0.0156 (9)	0.0013 (9)	0.0079 (8)	0.0013 (8)
C10	0.0287 (14)	0.0459 (16)	0.0325 (13)	0.0088 (11)	0.0033 (11)	0.0040 (11)
C11	0.0239 (12)	0.0205 (11)	0.0191 (10)	-0.0006 (9)	0.0065 (9)	-0.0022 (8)
C12	0.0242 (12)	0.0151 (10)	0.0203 (10)	0.0019 (8)	0.0050 (9)	-0.0028 (8)
C13	0.0258 (12)	0.0177 (11)	0.0264 (11)	-0.0024 (9)	0.0061 (9)	-0.0017 (9)
C14	0.0265 (13)	0.0204 (11)	0.0278 (11)	0.0004 (9)	-0.0009 (9)	-0.0054 (9)
C15	0.0332 (14)	0.0296 (13)	0.0189 (10)	0.0048 (10)	-0.0015 (10)	0.0001 (9)
C16	0.0320 (14)	0.0266 (12)	0.0238 (11)	0.0012 (10)	0.0097 (10)	0.0019 (9)
C17	0.0227 (12)	0.0183 (11)	0.0227 (10)	0.0008 (9)	0.0042 (9)	-0.0014 (8)
C18	0.0270 (14)	0.0361 (15)	0.0370 (13)	-0.0005 (11)	-0.0037 (11)	-0.0039 (11)
C19	0.0281 (13)	0.0241 (12)	0.0338 (12)	-0.0028 (10)	0.0125 (10)	0.0036 (10)
C20	0.0259 (13)	0.0224 (12)	0.0412 (13)	-0.0036 (10)	0.0124 (10)	-0.0024 (10)
C21	0.0314 (14)	0.0244 (12)	0.0351 (12)	-0.0001 (10)	0.0096 (11)	-0.0038 (10)

Geometric parameters (Å, °)

Br1—C1	1.957 (2)	C10—H10B	0.9800
Br2—C21	1.956 (3)	C10—H10C	0.9800
O1—C4	1.369 (3)	C11—C12	1.516 (3)
O1—C3	1.436 (3)	C11—H11A	0.9900
O2—C17	1.372 (3)	C11—H11B	0.9900
O2—C19	1.435 (3)	C12—C13	1.387 (3)
C1—C2	1.503 (3)	C12—C17	1.398 (3)
C1—H1A	0.9900	C13—C14	1.398 (3)
C1—H1B	0.9900	C13—H13	0.9500
C2—C3	1.503 (4)	C14—C15	1.379 (3)
C2—H2A	0.9900	C14—C18	1.506 (3)
C2—H2B	0.9900	C15—C16	1.388 (3)
C3—H3A	0.9900	C15—H15	0.9500
C3—H3B	0.9900	C16—C17	1.393 (3)
C4—C5	1.386 (3)	C16—H16	0.9500
C4—C9	1.407 (3)	C18—H18A	0.9800
C5—C6	1.391 (4)	C18—H18B	0.9800
C5—H5	0.9500	C18—H18C	0.9800
C6—C7	1.389 (4)	C19—C20	1.509 (3)
C6—H6	0.9500	C19—H19A	0.9900
C7—C8	1.397 (3)	C19—H19B	0.9900
C7—C10	1.505 (3)	C20—C21	1.497 (3)
C8—C9	1.388 (3)	C20—H20A	0.9900
C8—H8	0.9500	C20—H20B	0.9900
C9—C11	1.510 (3)	C21—H21A	0.9900
C10—H10A	0.9800	C21—H21B	0.9900

C4—O1—C3	119.08 (18)	C12—C11—H11A	108.5
C17—O2—C19	116.61 (17)	C9—C11—H11B	108.5
C2—C1—Br1	111.78 (17)	C12—C11—H11B	108.5
C2—C1—H1A	109.3	H11A—C11—H11B	107.5
Br1—C1—H1A	109.3	C13—C12—C17	118.14 (19)
C2—C1—H1B	109.3	C13—C12—C11	121.2 (2)
Br1—C1—H1B	109.3	C17—C12—C11	120.6 (2)
H1A—C1—H1B	107.9	C12—C13—C14	122.8 (2)
C3—C2—C1	114.44 (19)	C12—C13—H13	118.6
C3—C2—H2A	108.6	C14—C13—H13	118.6
C1—C2—H2A	108.6	C15—C14—C13	117.3 (2)
C3—C2—H2B	108.6	C15—C14—C18	121.8 (2)
C1—C2—H2B	108.6	C13—C14—C18	120.9 (2)
H2A—C2—H2B	107.6	C14—C15—C16	122.1 (2)
O1—C3—C2	105.84 (19)	C14—C15—H15	118.9
O1—C3—H3A	110.6	C16—C15—H15	118.9
C2—C3—H3A	110.6	C15—C16—C17	119.3 (2)
O1—C3—H3B	110.6	C15—C16—H16	120.3
C2—C3—H3B	110.6	C17—C16—H16	120.3
H3A—C3—H3B	108.7	O2—C17—C16	123.5 (2)
O1—C4—C5	124.4 (2)	O2—C17—C12	116.07 (18)
O1—C4—C9	115.06 (19)	C16—C17—C12	120.4 (2)
C5—C4—C9	120.5 (2)	C14—C18—H18A	109.5
C4—C5—C6	119.7 (2)	C14—C18—H18B	109.5
C4—C5—H5	120.2	H18A—C18—H18B	109.5
C6—C5—H5	120.2	C14—C18—H18C	109.5
C7—C6—C5	121.6 (2)	H18A—C18—H18C	109.5
C7—C6—H6	119.2	H18B—C18—H18C	109.5
C5—C6—H6	119.2	O2—C19—C20	107.90 (19)
C6—C7—C8	117.5 (2)	O2—C19—H19A	110.1
C6—C7—C10	121.8 (2)	C20—C19—H19A	110.1
C8—C7—C10	120.7 (2)	O2—C19—H19B	110.1
C9—C8—C7	122.7 (2)	C20—C19—H19B	110.1
C9—C8—H8	118.7	H19A—C19—H19B	108.4
C7—C8—H8	118.7	C21—C20—C19	111.2 (2)
C8—C9—C4	118.1 (2)	C21—C20—H20A	109.4
C8—C9—C11	121.2 (2)	C19—C20—H20A	109.4
C4—C9—C11	120.7 (2)	C21—C20—H20B	109.4
C7—C10—H10A	109.5	C19—C20—H20B	109.4
C7—C10—H10B	109.5	H20A—C20—H20B	108.0
H10A—C10—H10B	109.5	C20—C21—Br2	111.45 (17)
C7—C10—H10C	109.5	C20—C21—H21A	109.3
H10A—C10—H10C	109.5	Br2—C21—H21A	109.3
H10B—C10—H10C	109.5	C20—C21—H21B	109.3
C9—C11—C12	114.98 (17)	Br2—C21—H21B	109.3
C9—C11—H11A	108.5	H21A—C21—H21B	108.0

Br1—C1—C2—C3	67.6 (2)	C9—C11—C12—C13	-109.0 (2)
C4—O1—C3—C2	170.44 (18)	C9—C11—C12—C17	74.4 (3)
C1—C2—C3—O1	62.5 (2)	C17—C12—C13—C14	-0.2 (3)
C3—O1—C4—C5	14.2 (3)	C11—C12—C13—C14	-176.9 (2)
C3—O1—C4—C9	-167.37 (18)	C12—C13—C14—C15	0.7 (3)
O1—C4—C5—C6	177.6 (2)	C12—C13—C14—C18	179.7 (2)
C9—C4—C5—C6	-0.8 (3)	C13—C14—C15—C16	-0.7 (3)
C4—C5—C6—C7	0.7 (3)	C18—C14—C15—C16	-179.8 (2)
C5—C6—C7—C8	-0.3 (3)	C14—C15—C16—C17	0.3 (4)
C5—C6—C7—C10	179.2 (2)	C19—O2—C17—C16	-10.0 (3)
C6—C7—C8—C9	-0.2 (3)	C19—O2—C17—C12	169.29 (19)
C10—C7—C8—C9	-179.6 (2)	C15—C16—C17—O2	179.4 (2)
C7—C8—C9—C4	0.1 (3)	C15—C16—C17—C12	0.2 (3)
C7—C8—C9—C11	-177.87 (19)	C13—C12—C17—O2	-179.52 (18)
O1—C4—C9—C8	-178.16 (18)	C11—C12—C17—O2	-2.8 (3)
C5—C4—C9—C8	0.4 (3)	C13—C12—C17—C16	-0.2 (3)
O1—C4—C9—C11	-0.2 (3)	C11—C12—C17—C16	176.5 (2)
C5—C4—C9—C11	178.35 (19)	C17—O2—C19—C20	-175.85 (18)
C8—C9—C11—C12	-113.2 (2)	O2—C19—C20—C21	-69.0 (3)
C4—C9—C11—C12	68.9 (3)	C19—C20—C21—Br2	-176.17 (16)
