

Acta Crystallographica Section E

## Structure Reports

Online

ISSN 1600-5368

## 4-Hydroxy-3-mesityl-1-oxaspiro[4.4]non-3-en-2-one

 Jin-Hao Zhao,<sup>a</sup> Yong Zhou,<sup>b</sup> Guo-Nian Zhu<sup>a</sup> and Jing-Li Cheng<sup>a\*</sup>
<sup>a</sup>College of Agriculture and Biotechnology, Zhejiang University, Hangzhou 310029, People's Republic of China, and <sup>b</sup>College of Chemical Engineering and Materials Science, Zhejiang University of Technology, Hangzhou 310032, People's Republic of China

Correspondence e-mail: chengjingli@zju.edu.cn

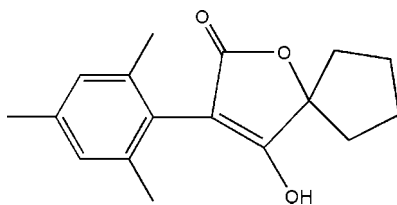
Received 9 February 2009; accepted 9 March 2009

 Key indicators: single-crystal X-ray study;  $T = 296$  K; mean  $\sigma(\text{C}-\text{C}) = 0.002$  Å;  $R$  factor = 0.045;  $wR$  factor = 0.139; data-to-parameter ratio = 18.3.

In the title compound,  $\text{C}_{17}\text{H}_{20}\text{O}_3$ , the five-membered cyclopentyl ring displays an envelope conformation, with the atom at the flap position 0.538 (3) Å out of the mean plane formed by the other four atoms. The dihedral angle between the benzene and furan rings is 63.34 (15)°. In the crystal structure, molecules are linked through intermolecular  $\text{O}-\text{H}\cdots\text{O}$  hydrogen bonds, forming a zigzag chain along [101].

### Related literature

For related compounds, see: Fischer *et al.* (1995); Bayer Aktiengesellschaft (1995). For a related structure, see: Yu *et al.* (2009).



### Experimental

#### Crystal data

 $\text{C}_{17}\text{H}_{20}\text{O}_3$ 
 $M_r = 272.33$ 

 Monoclinic,  $P2_1/n$   
 $a = 8.8543$  (4) Å  
 $b = 17.9266$  (7) Å  
 $c = 9.4883$  (4) Å  
 $\beta = 97.809$  (2)°  
 $V = 1492.09$  (11) Å<sup>3</sup>
 $Z = 4$   
 Mo  $K\alpha$  radiation  
 $\mu = 0.08$  mm<sup>-1</sup>  
 $T = 296$  K  
 $0.54 \times 0.48 \times 0.20$  mm

#### Data collection

 Rigaku R-Axis RAPID  
 diffractometer  
 Absorption correction: multi-scan  
 (ABSCOR; Higashi, 1995)  
 $T_{\min} = 0.947$ ,  $T_{\max} = 0.984$ 

 14502 measured reflections  
 3410 independent reflections  
 2344 reflections with  $I > 2\sigma(I)$   
 $R_{\text{int}} = 0.026$ 

#### Refinement

 $R[F^2 > 2\sigma(F^2)] = 0.045$   
 $wR(F^2) = 0.139$   
 $S = 1.00$   
 3410 reflections

 186 parameters  
 H-atom parameters constrained  
 $\Delta\rho_{\max} = 0.21$  e Å<sup>-3</sup>  
 $\Delta\rho_{\min} = -0.17$  e Å<sup>-3</sup>
**Table 1**

Hydrogen-bond geometry (Å, °).

$D-H\cdots A$	$D-H$	$H\cdots A$	$D\cdots A$	$D-H\cdots A$
$\text{O1}-\text{H1}\cdots\text{O2}^i$	0.82	1.87	2.6267 (14)	154

 Symmetry code: (i)  $x + \frac{1}{2}, -y + \frac{1}{2}, z + \frac{1}{2}$ .

Data collection: *PROCESS-AUTO* (Rigaku, 1998); cell refinement: *PROCESS-AUTO*; data reduction: *CrystalStructure* (Rigaku/MS, 2002); program(s) used to solve structure: *SHELXS97* (Sheldrick, 2008); program(s) used to refine structure: *SHELXL97* (Sheldrick, 2008); molecular graphics: *ORTEP-3* (Farrugia, 1997); software used to prepare material for publication: *WinGX* (Farrugia, 1999).

The authors thank the Natural Science Foundation of Zhejiang Province, China, for financial support (2008 C21029) and also thank Professor Jian-Ming Gu for his help with the crystal data analysis.

Supplementary data and figures for this paper are available from the IUCr electronic archives (Reference: IS2389).

### References

- Bayer Aktiengesellschaft (1995). WO Patent No. 9 504 719A1.  
 Farrugia, L. J. (1997). *J. Appl. Cryst.* **30**, 565.  
 Farrugia, L. J. (1999). *J. Appl. Cryst.* **32**, 837–838.  
 Fischer, R., Santel, B. W. & Erdelen, C. (1995). German Patent No. 4 337 853.  
 Higashi, T. (1995). *ABSCOR*. Rigaku Corporation, Tokyo, Japan.  
 Rigaku (1998). *PROCESS-AUTO*. Rigaku Corporation, Tokyo, Japan.  
 Rigaku/MS (2002). *CrystalStructure*. Rigaku/MS, The Woodlands, Texas, USA.  
 Sheldrick, G. M. (2008). *Acta Cryst.* **A64**, 112–122.  
 Yu, C.-M., Zhou, Y., Cheng, J.-L. & Zhao, J.-H. (2009). *Acta Cryst.* **E65**, o183.

## supporting information

*Acta Cryst.* (2009). E65, o755 [doi:10.1107/S1600536809008617]

**4-Hydroxy-3-mesityl-1-oxaspiro[4.4]non-3-en-2-one**

Jin-Hao Zhao, Yong Zhou, Guo-Nian Zhu and Jing-Li Cheng

**S1. Comment**

Substituted 4-hydroxy-1-oxaspiro[4,4]non-3-en-2-one represent an important class of tetronic acids and part of them have high biological activity as herbicides and insecticides (Fischer *et al.*, 1995). Bayer company has developed three tetronic acids pesticides-spirodiclofen, spiromesifen and spirotetramat (Bayer Aktiengesellschaft, 1995). In addition, the title compound 3-mesityl-4-hydroxy-1-oxaspiro[4,4]non-3-en-2-one is the key intermediate in preparing highly efficient acaricide- spiromesifen. As part of our continuing interest in the new acaricide design and synthesis, We have isolated the product, (I), of the cyclized reaction of 1-(2-mesityl-acetoxy)-cyclopentanecarboxylic acid methyl ester as colorless crystals suitable for X-ray analysis.

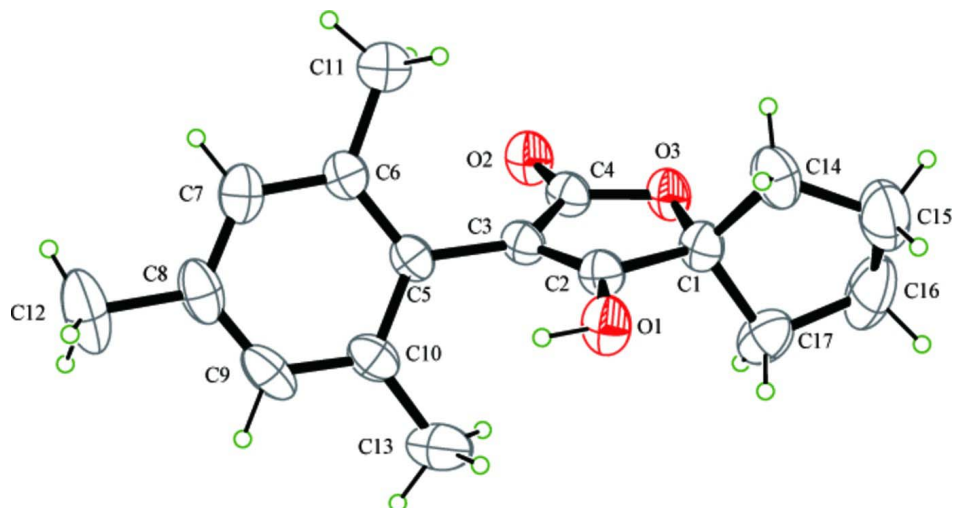
The molecular structure of (I) is shown in Fig. 1. The molecule contains one benzene ring and two five membered rings. The dihedral angle between benzene and furan rings is 63.28 (15)°, smaller than the angle between benzene and furan rings of the compound 3-Mesityl-2-oxo-1-oxaspiro[4,4]non-3-en-4-yl-2-(4-chlorophenyl) -3-methylbutyrate (Yu *et al.*, 2009). The cyclopentyl ring displays an envelope conformation with C17 atom at the flap position 0.538 (3) Å out of the mean plane formed by the other four atoms. The title molecules are linked through an intermolecular hydrogen bond of O1—H1···O2. As expected, C2—C3 and C4—O2 are typically double bonds with bond distances of 1.344 (2) and 1.220 (2) Å. The bond distance of C3—C4 is 1.457 (2) Å, suggesting that carbonyl group on C4 has formed conjugate system with double bond on C3 and C2.

**S2. Experimental**

1-(2-Mesityl-acetoxy)-cyclopentanecarboxylic acid methyl ester (10 mmol, 3.04 g) was added to a solution of potassium *t*-butoxide (12 mmol, 1.34 g) in *t*-butylalcohol (35 ml) and the mixture was stirred at reflux for 5 h. Then water (70 ml) was added and the solution was acidified with hydrochloric (2*M*) to give a solid precipitate. The solid was filtrated and recrystallized with 95% ethanol to colourless blocks.

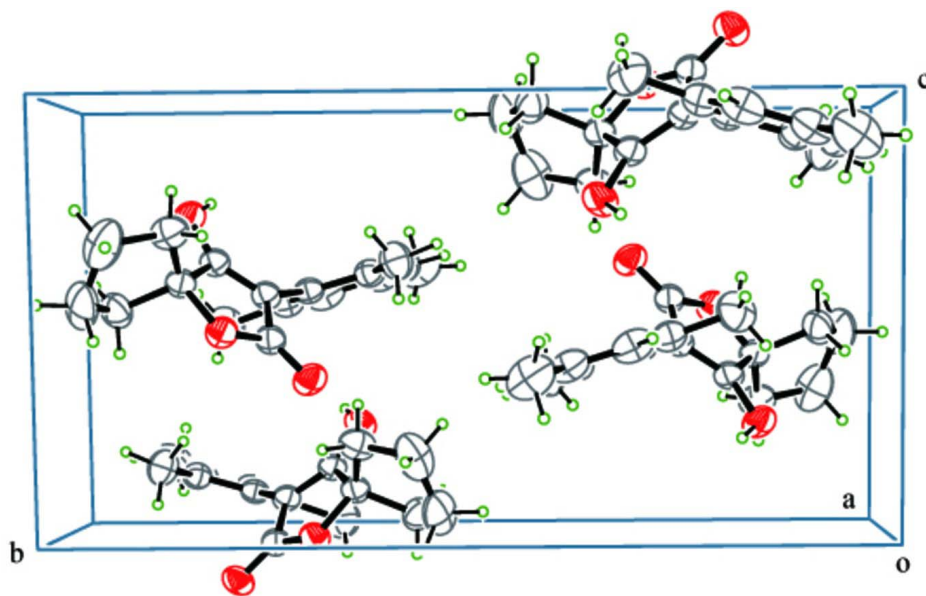
**S3. Refinement**

H atoms were included in calculated positions (C—H = 0.93–0.97 and O—H = 0.82 Å) and refined using a riding model, with  $U_{\text{iso}}(\text{H}) = 1.2U_{\text{eq}}(\text{C or O})$ .



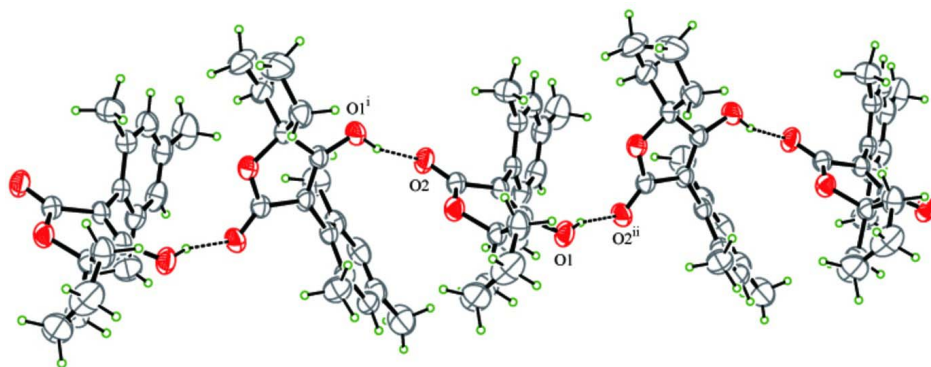
**Figure 1**

The molecular structure of (I), showing the atom-labelling scheme. Displacement ellipsoids are drawn at the 30% probability level.



**Figure 2**

Molecular packing arrangement in the unit cell.

**Figure 3**

View showing the O—H...O hydrogen bonding (dashed lines). [Symmetry codes: (i)  $-1/2 + x, 1/2 - y, -1/2 + z$ ; (ii)  $1/2 + x, 1/2 - y, 1/2 + z$ .]

#### 4-Hydroxy-3-mesityl-1-oxaspiro[4.4]non-3-en-2-one

##### Crystal data

$C_{17}H_{20}O_3$

$M_r = 272.33$

Monoclinic,  $P2_1/n$

Hall symbol:  $-P 2_1n$

$a = 8.8543$  (4) Å

$b = 17.9266$  (7) Å

$c = 9.4883$  (4) Å

$\beta = 97.809$  (2)°

$V = 1492.09$  (11) Å<sup>3</sup>

$Z = 4$

$F(000) = 584$

$D_x = 1.212$  Mg m<sup>-3</sup>

Mo  $K\alpha$  radiation,  $\lambda = 0.71075$  Å

Cell parameters from 9815 reflections

$\theta = 3.1$ – $27.5$ °

$\mu = 0.08$  mm<sup>-1</sup>

$T = 296$  K

Chunk, colorless

$0.54 \times 0.48 \times 0.20$  mm

##### Data collection

Rigaku R-Axis RAPID

diffractometer

Radiation source: fine-focus sealed tube

Graphite monochromator

Detector resolution: 10.00 pixels mm<sup>-1</sup>

$\omega$  scans

Absorption correction: multi-scan

(*ABSCOR*; Higashi, 1995)

$T_{\min} = 0.947$ ,  $T_{\max} = 0.984$

14502 measured reflections

3410 independent reflections

2344 reflections with  $I > 2\sigma(I)$

$R_{\text{int}} = 0.026$

$\theta_{\max} = 27.5$ °,  $\theta_{\min} = 3.1$ °

$h = -11$ → $11$

$k = -22$ → $23$

$l = -12$ → $11$

##### Refinement

Refinement on  $F^2$

Least-squares matrix: full

$R[F^2 > 2\sigma(F^2)] = 0.045$

$wR(F^2) = 0.139$

$S = 1.00$

3410 reflections

186 parameters

0 restraints

Primary atom site location: structure-invariant

direct methods

Secondary atom site location: difference Fourier

map

Hydrogen site location: inferred from neighbouring sites

H-atom parameters constrained

$w = 1/[\sigma^2(F_o^2) + (0.0705P)^2 + 0.2966P]$

where  $P = (F_o^2 + 2F_c^2)/3$

$(\Delta/\sigma)_{\max} = 0.003$

$\Delta\rho_{\max} = 0.21$  e Å<sup>-3</sup>

$\Delta\rho_{\min} = -0.17$  e Å<sup>-3</sup>

Extinction correction: *SHELXL97* (Sheldrick, 2008),  $F_c^* = kF_c[1 + 0.001x F_c^2 \lambda^3 / \sin(2\theta)]^{-1/4}$

Extinction coefficient: 0.028 (4)

*Special details*

**Geometry.** All e.s.d.'s (except the e.s.d. in the dihedral angle between two l.s. planes) are estimated using the full covariance matrix. The cell e.s.d.'s are taken into account individually in the estimation of e.s.d.'s in distances, angles and torsion angles; correlations between e.s.d.'s in cell parameters are only used when they are defined by crystal symmetry. An approximate (isotropic) treatment of cell e.s.d.'s is used for estimating e.s.d.'s involving l.s. planes.

**Refinement.** Refinement of  $F^2$  against ALL reflections. The weighted  $R$ -factor  $wR$  and goodness of fit  $S$  are based on  $F^2$ , conventional  $R$ -factors  $R$  are based on  $F$ , with  $F$  set to zero for negative  $F^2$ . The threshold expression of  $F^2 > \sigma(F^2)$  is used only for calculating  $R$ -factors(gt) *etc.* and is not relevant to the choice of reflections for refinement.  $R$ -factors based on  $F^2$  are statistically about twice as large as those based on  $F$ , and  $R$ -factors based on ALL data will be even larger.

*Fractional atomic coordinates and isotropic or equivalent isotropic displacement parameters ( $\text{\AA}^2$ )*

	<i>x</i>	<i>y</i>	<i>z</i>	$U_{\text{iso}}^*/U_{\text{eq}}$
O1	0.58430 (13)	0.34534 (6)	0.74039 (12)	0.0565 (3)
H1	0.6644	0.3224	0.7610	0.068*
O2	0.35651 (13)	0.19282 (7)	0.36494 (12)	0.0566 (3)
O3	0.28216 (11)	0.29401 (6)	0.47485 (11)	0.0509 (3)
C1	0.34616 (17)	0.34474 (8)	0.58738 (16)	0.0479 (4)
C2	0.49897 (16)	0.31085 (8)	0.63500 (15)	0.0441 (3)
C3	0.52342 (15)	0.25023 (8)	0.55790 (15)	0.0423 (3)
C4	0.38583 (16)	0.24044 (8)	0.45643 (16)	0.0449 (4)
C5	0.66240 (15)	0.20313 (8)	0.56780 (14)	0.0418 (3)
C6	0.65908 (17)	0.12818 (9)	0.60806 (15)	0.0466 (4)
C7	0.7938 (2)	0.08727 (10)	0.62374 (18)	0.0577 (4)
H7	0.7910	0.0373	0.6496	0.069*
C8	0.93077 (19)	0.11821 (12)	0.60223 (19)	0.0630 (5)
C9	0.93142 (18)	0.19158 (12)	0.55935 (19)	0.0632 (5)
H9	1.0232	0.2129	0.5428	0.076*
C10	0.79980 (17)	0.23510 (10)	0.53979 (17)	0.0516 (4)
C11	0.5131 (2)	0.09125 (10)	0.6355 (2)	0.0669 (5)
H11A	0.5348	0.0421	0.6729	0.080*
H11B	0.4447	0.0879	0.5480	0.080*
H11C	0.4665	0.1202	0.7029	0.080*
C12	1.0770 (2)	0.07381 (16)	0.6244 (3)	0.0992 (9)
H12A	1.1297	0.0795	0.5430	0.119*
H12B	1.0539	0.0221	0.6365	0.119*
H12C	1.1404	0.0916	0.7077	0.119*
C13	0.8078 (3)	0.31327 (12)	0.4869 (3)	0.0788 (6)
H13A	0.7232	0.3224	0.4144	0.095*
H13B	0.9014	0.3202	0.4481	0.095*
H13C	0.8039	0.3474	0.5642	0.095*
C14	0.2387 (2)	0.35110 (11)	0.7003 (2)	0.0651 (5)
H14A	0.1679	0.3095	0.6926	0.078*
H14B	0.2964	0.3507	0.7948	0.078*
C15	0.1532 (3)	0.42400 (14)	0.6740 (3)	0.0951 (8)
H15A	0.0442	0.4157	0.6673	0.114*
H15B	0.1836	0.4588	0.7509	0.114*
C16	0.1930 (3)	0.45354 (13)	0.5383 (3)	0.0983 (9)

H16A	0.1941	0.5076	0.5393	0.118*
H16B	0.1201	0.4368	0.4590	0.118*
C17	0.3512 (2)	0.42296 (10)	0.5263 (2)	0.0672 (5)
H17A	0.3699	0.4215	0.4280	0.081*
H17B	0.4297	0.4528	0.5811	0.081*

*Atomic displacement parameters (Å<sup>2</sup>)*

	$U^{11}$	$U^{22}$	$U^{33}$	$U^{12}$	$U^{13}$	$U^{23}$
O2	0.0467 (6)	0.0659 (7)	0.0516 (6)	0.0019 (5)	-0.0130 (5)	-0.0115 (5)
O3	0.0375 (5)	0.0604 (6)	0.0503 (6)	0.0066 (4)	-0.0107 (5)	-0.0036 (5)
O1	0.0467 (6)	0.0621 (7)	0.0544 (6)	0.0071 (5)	-0.0158 (5)	-0.0121 (5)
C6	0.0434 (8)	0.0533 (8)	0.0421 (7)	0.0022 (6)	0.0023 (6)	-0.0025 (6)
C2	0.0375 (7)	0.0511 (8)	0.0404 (7)	0.0005 (6)	-0.0062 (6)	0.0018 (6)
C5	0.0337 (7)	0.0544 (8)	0.0350 (7)	0.0002 (6)	-0.0033 (5)	-0.0035 (6)
C4	0.0362 (7)	0.0538 (8)	0.0420 (7)	-0.0003 (6)	-0.0040 (6)	0.0018 (7)
C7	0.0587 (10)	0.0606 (10)	0.0515 (9)	0.0148 (8)	-0.0014 (8)	-0.0052 (8)
C3	0.0331 (7)	0.0508 (8)	0.0403 (7)	-0.0003 (6)	-0.0045 (6)	0.0010 (6)
C1	0.0415 (8)	0.0530 (8)	0.0450 (8)	0.0063 (6)	-0.0086 (6)	-0.0003 (6)
C10	0.0393 (8)	0.0672 (10)	0.0471 (8)	-0.0077 (7)	0.0016 (6)	-0.0061 (7)
C9	0.0325 (8)	0.0966 (14)	0.0598 (10)	-0.0071 (8)	0.0035 (7)	-0.0207 (10)
C8	0.0434 (9)	0.0874 (13)	0.0544 (9)	0.0161 (9)	-0.0069 (7)	-0.0207 (9)
C11	0.0600 (11)	0.0624 (10)	0.0800 (12)	-0.0036 (8)	0.0157 (9)	0.0087 (9)
C14	0.0505 (10)	0.0856 (13)	0.0572 (10)	0.0117 (9)	0.0003 (8)	-0.0070 (9)
C17	0.0730 (12)	0.0551 (10)	0.0672 (11)	0.0017 (8)	-0.0126 (9)	0.0091 (8)
C13	0.0677 (13)	0.0812 (13)	0.0881 (14)	-0.0219 (10)	0.0133 (11)	0.0100 (11)
C16	0.0885 (17)	0.0668 (13)	0.127 (2)	0.0307 (12)	-0.0290 (16)	-0.0023 (14)
C12	0.0569 (12)	0.129 (2)	0.1046 (17)	0.0382 (13)	-0.0141 (12)	-0.0354 (16)
C15	0.0583 (12)	0.0889 (16)	0.135 (2)	0.0126 (11)	0.0030 (13)	-0.0317 (16)

*Geometric parameters (Å, °)*

O2—C4	1.2200 (18)	C8—C12	1.510 (2)
O3—C4	1.3561 (18)	C11—H11A	0.9600
O3—C1	1.4574 (18)	C11—H11B	0.9600
O1—C2	1.3221 (17)	C11—H11C	0.9600
O1—H1	0.8200	C14—C15	1.514 (3)
C6—C7	1.391 (2)	C14—H14A	0.9700
C6—C5	1.398 (2)	C14—H14B	0.9700
C6—C11	1.506 (2)	C17—C16	1.523 (3)
C2—C3	1.344 (2)	C17—H17A	0.9700
C2—C1	1.4960 (19)	C17—H17B	0.9700
C5—C10	1.402 (2)	C13—H13A	0.9600
C5—C3	1.4847 (19)	C13—H13B	0.9600
C4—C3	1.4571 (19)	C13—H13C	0.9600
C7—C8	1.374 (3)	C16—C15	1.479 (4)
C7—H7	0.9300	C16—H16A	0.9700
C1—C17	1.520 (2)	C16—H16B	0.9700

C1—C14	1.531 (3)	C12—H12A	0.9600
C10—C9	1.394 (2)	C12—H12B	0.9600
C10—C13	1.493 (3)	C12—H12C	0.9600
C9—C8	1.377 (3)	C15—H15A	0.9700
C9—H9	0.9300	C15—H15B	0.9700
C4—O3—C1	109.49 (10)	H11A—C11—H11C	109.5
C2—O1—H1	109.5	H11B—C11—H11C	109.5
C7—C6—C5	119.10 (15)	C15—C14—C1	107.09 (18)
C7—C6—C11	119.57 (15)	C15—C14—H14A	110.3
C5—C6—C11	121.33 (14)	C1—C14—H14A	110.3
O1—C2—C3	132.24 (13)	C15—C14—H14B	110.3
O1—C2—C1	116.03 (13)	C1—C14—H14B	110.3
C3—C2—C1	111.72 (12)	H14A—C14—H14B	108.6
C6—C5—C10	119.70 (14)	C1—C17—C16	103.20 (18)
C6—C5—C3	121.04 (13)	C1—C17—H17A	111.1
C10—C5—C3	119.24 (14)	C16—C17—H17A	111.1
O2—C4—O3	120.32 (12)	C1—C17—H17B	111.1
O2—C4—C3	129.22 (14)	C16—C17—H17B	111.1
O3—C4—C3	110.45 (13)	H17A—C17—H17B	109.1
C8—C7—C6	122.20 (17)	C10—C13—H13A	109.5
C8—C7—H7	118.9	C10—C13—H13B	109.5
C6—C7—H7	118.9	H13A—C13—H13B	109.5
C2—C3—C4	105.96 (13)	C10—C13—H13C	109.5
C2—C3—C5	128.23 (12)	H13A—C13—H13C	109.5
C4—C3—C5	125.79 (13)	H13B—C13—H13C	109.5
O3—C1—C2	102.33 (11)	C15—C16—C17	105.47 (17)
O3—C1—C17	108.96 (12)	C15—C16—H16A	110.6
C2—C1—C17	114.67 (14)	C17—C16—H16A	110.6
O3—C1—C14	110.02 (13)	C15—C16—H16B	110.6
C2—C1—C14	116.21 (13)	C17—C16—H16B	110.6
C17—C1—C14	104.56 (14)	H16A—C16—H16B	108.8
C9—C10—C5	118.51 (16)	C8—C12—H12A	109.5
C9—C10—C13	119.54 (16)	C8—C12—H12B	109.5
C5—C10—C13	121.93 (16)	H12A—C12—H12B	109.5
C8—C9—C10	122.48 (16)	C8—C12—H12C	109.5
C8—C9—H9	118.8	H12A—C12—H12C	109.5
C10—C9—H9	118.8	H12B—C12—H12C	109.5
C7—C8—C9	117.95 (15)	C16—C15—C14	106.21 (19)
C7—C8—C12	121.6 (2)	C16—C15—H15A	110.5
C9—C8—C12	120.4 (2)	C14—C15—H15A	110.5
C6—C11—H11A	109.5	C16—C15—H15B	110.5
C6—C11—H11B	109.5	C14—C15—H15B	110.5
H11A—C11—H11B	109.5	H15A—C15—H15B	108.7
C6—C11—H11C	109.5		
C7—C6—C5—C10	1.9 (2)	C3—C2—C1—O3	1.92 (17)
C11—C6—C5—C10	-178.43 (15)	O1—C2—C1—C17	63.07 (19)

C7—C6—C5—C3	-176.40 (13)	C3—C2—C1—C17	-115.89 (16)
C11—C6—C5—C3	3.2 (2)	O1—C2—C1—C14	-59.24 (19)
C1—O3—C4—O2	-178.53 (14)	C3—C2—C1—C14	121.80 (16)
C1—O3—C4—C3	1.85 (17)	C6—C5—C10—C9	-2.9 (2)
C5—C6—C7—C8	0.6 (2)	C3—C5—C10—C9	175.51 (14)
C11—C6—C7—C8	-179.04 (16)	C6—C5—C10—C13	175.74 (16)
O1—C2—C3—C4	-179.64 (16)	C3—C5—C10—C13	-5.9 (2)
C1—C2—C3—C4	-0.90 (18)	C5—C10—C9—C8	1.3 (3)
O1—C2—C3—C5	-1.5 (3)	C13—C10—C9—C8	-177.29 (17)
C1—C2—C3—C5	177.20 (14)	C6—C7—C8—C9	-2.1 (2)
O2—C4—C3—C2	179.84 (16)	C6—C7—C8—C12	177.94 (17)
O3—C4—C3—C2	-0.58 (18)	C10—C9—C8—C7	1.1 (3)
O2—C4—C3—C5	1.7 (3)	C10—C9—C8—C12	-178.93 (18)
O3—C4—C3—C5	-178.75 (13)	O3—C1—C14—C15	-101.66 (17)
C6—C5—C3—C2	116.31 (18)	C2—C1—C14—C15	142.70 (16)
C10—C5—C3—C2	-62.0 (2)	C17—C1—C14—C15	15.21 (19)
C6—C5—C3—C4	-65.9 (2)	O3—C1—C17—C16	85.95 (18)
C10—C5—C3—C4	115.72 (17)	C2—C1—C17—C16	-160.07 (16)
C4—O3—C1—C2	-2.22 (16)	C14—C1—C17—C16	-31.65 (18)
C4—O3—C1—C17	119.58 (15)	C1—C17—C16—C15	37.3 (2)
C4—O3—C1—C14	-126.33 (14)	C17—C16—C15—C14	-27.9 (2)
O1—C2—C1—O3	-179.12 (13)	C1—C14—C15—C16	7.8 (2)

Hydrogen-bond geometry (Å, °)

<i>D</i> —H $\cdots$ <i>A</i>	<i>D</i> —H	H $\cdots$ <i>A</i>	<i>D</i> $\cdots$ <i>A</i>	<i>D</i> —H $\cdots$ <i>A</i>
O1—H1 $\cdots$ O2 <sup>i</sup>	0.82	1.87	2.6267 (14)	154

Symmetry code: (i)  $x+1/2, -y+1/2, z+1/2$ .