

Acta Crystallographica Section E

Structure Reports

Online

ISSN 1600-5368

3-Nitrophenyl pyrimidin-2-yl ether

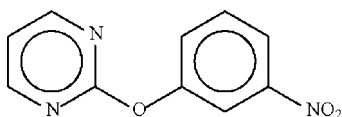
Nasir Shah Bakhtiar, Zanariah Abdullah and Seik Weng Ng*

Department of Chemistry, University of Malaya, 50603 Kuala Lumpur, Malaysia
Correspondence e-mail: seikweng@um.edu.my

Received 2 March 2009; accepted 3 March 2009

Key indicators: single-crystal X-ray study; $T = 118$ K; mean $\sigma(\text{C}-\text{C}) = 0.002$ Å;
 R factor = 0.037; wR factor = 0.102; data-to-parameter ratio = 15.5.In the title compound, $\text{C}_{10}\text{H}_7\text{N}_3\text{O}_3$, the dihedral angle between the two aromatic rings is $87.5(1)^\circ$; their *ipso*-C atoms subtend an angle of $117.4(1)^\circ$ at the ether O atom.

Related literature

For the structure of phenyl pyrimidin-2-yl ether, see: Shah Bakhtiar *et al.* (2009).

Experimental

Crystal data

 $\text{C}_{10}\text{H}_7\text{N}_3\text{O}_3$ $M_r = 217.19$ Orthorhombic, *Pbcn* $a = 18.1360(3)$ Å
 $b = 7.3355(1)$ Å
 $c = 14.5986(3)$ Å
 $V = 1942.15(6)$ Å³ $Z = 8$ Mo $K\alpha$ radiation $\mu = 0.11$ mm⁻¹ $T = 118$ K $0.40 \times 0.20 \times 0.15$ mm

Data collection

Bruker SMART APEX CCD
diffractometer
Absorption correction: none
12785 measured reflections2242 independent reflections
1890 reflections with $I > 2\sigma(I)$
 $R_{\text{int}} = 0.029$

Refinement

 $R[F^2 > 2\sigma(F^2)] = 0.037$
 $wR(F^2) = 0.102$
 $S = 1.02$
2242 reflections145 parameters
H-atom parameters constrained
 $\Delta\rho_{\text{max}} = 0.27$ e Å⁻³
 $\Delta\rho_{\text{min}} = -0.29$ e Å⁻³Data collection: *APEX2* (Bruker, 2007); cell refinement: *SAINTE* (Bruker, 2007); data reduction: *SAINTE*; program(s) used to solve structure: *SHELXS97* (Sheldrick, 2008); program(s) used to refine structure: *SHELXL97* (Sheldrick, 2008); molecular graphics: *X-SEED* (Barbour, 2001); software used to prepare material for publication: *publCIF* (Westrip, 2009).

We thank the University of Malaya for supporting this study (FS358/2008 A).

Supplementary data and figures for this paper are available from the IUCr electronic archives (Reference: HB2922).

References

- Barbour, L. J. (2001). *J. Supramol. Chem.* **1**, 189–191.
 Bruker (2007). *APEX2* and *SAINTE*. Bruker AXS Inc., Madison, Wisconsin, USA.
 Shah Bakhtiar, N., Abdullah, Z. & Ng, S. W. (2009). *Acta Cryst.* **E65**, o114.
 Sheldrick, G. M. (2008). *Acta Cryst.* **A64**, 112–122.
 Westrip, S. P. (2009). *publCIF*. In preparation.

supporting information

Acta Cryst. (2009). E65, o704 [doi:10.1107/S1600536809007697]

3-Nitrophenyl pyrimidin-2-yl ether

Nasir Shah Bakhtiar, Zanariah Abdullah and Seik Weng Ng

S1. Experimental

3-Nitrophenol (2.78 g, 20 mmol) was mixed with sodium hydroxide (0.08 g, 20 mmol) in several drops of water. The water was then evaporated. The paste was heated with 2-chloropyrimidine (2.30 g, 20 mmol) at 423–433 K for 6 h. The product was dissolved in water and the solution extracted with chloroform. The chloroform phase was dried over sodium sulfate; the evaporation of the solvent gave well shaped very pale brown blocks of (I) 40% yield along with some unidentified brown material.

S2. Refinement

The H-atoms were placed in calculated positions (C—H 0.95 Å) and refined as riding with $U(\text{H}) = 1.2U_{\text{eq}}(\text{C})$.

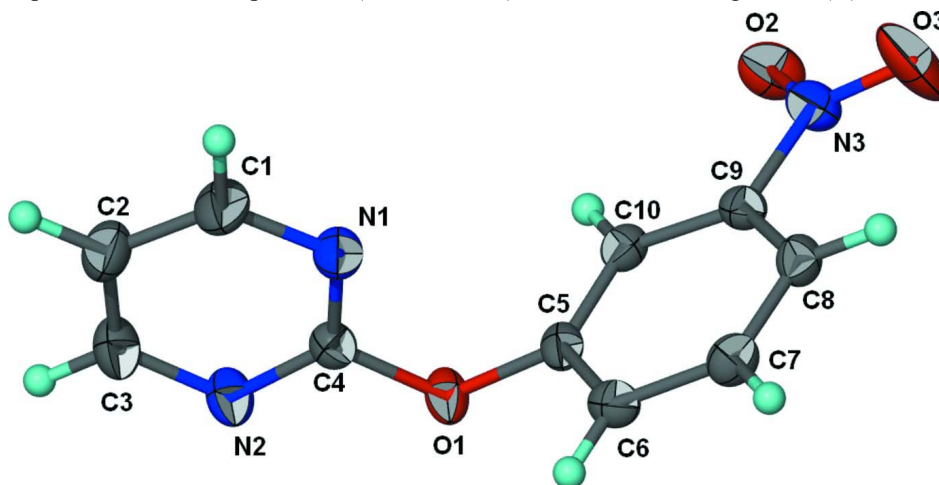


Figure 1

The molecular structure of (I) with displacement ellipsoids drawn at the 70% probability level. Hydrogen atoms are drawn as spheres of arbitrary radius.

3-Nitrophenyl pyrimidin-2-yl ether

Crystal data

$\text{C}_{10}\text{H}_7\text{N}_3\text{O}_3$

$M_r = 217.19$

Orthorhombic, *Pbcn*

Hall symbol: $-P\ 2n\ 2ab$

$a = 18.1360\ (3)\ \text{\AA}$

$b = 7.3355\ (1)\ \text{\AA}$

$c = 14.5986\ (3)\ \text{\AA}$

$V = 1942.15\ (6)\ \text{\AA}^3$

$Z = 8$

$F(000) = 896$

$D_x = 1.486\ \text{Mg m}^{-3}$

Mo $K\alpha$ radiation, $\lambda = 0.71073\ \text{\AA}$

Cell parameters from 4130 reflections

$\theta = 2.8\text{--}28.2^\circ$

$\mu = 0.11 \text{ mm}^{-1}$
 $T = 118 \text{ K}$

Block, faint brown
 $0.40 \times 0.20 \times 0.15 \text{ mm}$

Data collection

Bruker SMART APEX CCD
 diffractometer
 Radiation source: fine-focus sealed tube
 Graphite monochromator
 ω scans
 12785 measured reflections
 2242 independent reflections

1890 reflections with $I > 2\sigma(I)$
 $R_{\text{int}} = 0.029$
 $\theta_{\text{max}} = 27.5^\circ$, $\theta_{\text{min}} = 2.3^\circ$
 $h = -23 \rightarrow 23$
 $k = -9 \rightarrow 9$
 $l = -18 \rightarrow 18$

Refinement

Refinement on F^2
 Least-squares matrix: full
 $R[F^2 > 2\sigma(F^2)] = 0.037$
 $wR(F^2) = 0.102$
 $S = 1.02$
 2242 reflections
 145 parameters
 0 restraints
 Primary atom site location: structure-invariant
 direct methods

Secondary atom site location: difference Fourier
 map
 Hydrogen site location: inferred from
 neighbouring sites
 H-atom parameters constrained
 $w = 1/[\sigma^2(F_o^2) + (0.0556P)^2 + 0.7122P]$
 where $P = (F_o^2 + 2F_c^2)/3$
 $(\Delta/\sigma)_{\text{max}} = 0.001$
 $\Delta\rho_{\text{max}} = 0.27 \text{ e } \text{\AA}^{-3}$
 $\Delta\rho_{\text{min}} = -0.29 \text{ e } \text{\AA}^{-3}$

Fractional atomic coordinates and isotropic or equivalent isotropic displacement parameters (\AA^2)

	<i>x</i>	<i>y</i>	<i>z</i>	$U_{\text{iso}}^*/U_{\text{eq}}$
O1	0.46423 (5)	0.52259 (12)	0.36904 (6)	0.0222 (2)
O2	0.34305 (5)	0.73218 (14)	0.08352 (6)	0.0291 (2)
O3	0.22956 (6)	0.7828 (2)	0.12079 (7)	0.0467 (3)
N1	0.42087 (6)	0.22878 (14)	0.35641 (8)	0.0228 (2)
N2	0.54579 (6)	0.29874 (15)	0.39501 (8)	0.0234 (3)
N3	0.29278 (6)	0.73707 (16)	0.13953 (7)	0.0238 (3)
C1	0.43734 (8)	0.05109 (18)	0.36142 (10)	0.0280 (3)
H1	0.3994	-0.0355	0.3502	0.034*
C2	0.50707 (8)	-0.01134 (18)	0.38219 (10)	0.0284 (3)
H2	0.5182	-0.1378	0.3850	0.034*
C3	0.56002 (7)	0.12058 (19)	0.39866 (10)	0.0267 (3)
H3	0.6087	0.0824	0.4132	0.032*
C4	0.47660 (7)	0.33980 (16)	0.37377 (8)	0.0180 (3)
C5	0.39288 (6)	0.58007 (15)	0.34572 (8)	0.0179 (3)
C6	0.34150 (7)	0.60883 (16)	0.41443 (8)	0.0205 (3)
H6	0.3532	0.5820	0.4764	0.025*
C7	0.27269 (7)	0.67742 (17)	0.39132 (9)	0.0218 (3)
H7	0.2369	0.6965	0.4378	0.026*
C8	0.25564 (7)	0.71852 (17)	0.30078 (8)	0.0202 (3)
H8	0.2086	0.7655	0.2845	0.024*
C9	0.30919 (7)	0.68896 (16)	0.23527 (8)	0.0181 (3)
C10	0.37846 (6)	0.61910 (15)	0.25487 (8)	0.0180 (2)
H10	0.4141	0.5991	0.2083	0.022*

Atomic displacement parameters (\AA^2)

	U^{11}	U^{22}	U^{33}	U^{12}	U^{13}	U^{23}
O1	0.0150 (4)	0.0171 (4)	0.0344 (5)	-0.0013 (3)	-0.0053 (4)	0.0031 (4)
O2	0.0272 (5)	0.0406 (6)	0.0196 (5)	-0.0023 (4)	0.0039 (4)	0.0012 (4)
O3	0.0262 (6)	0.0873 (10)	0.0266 (6)	0.0152 (6)	-0.0062 (4)	0.0083 (6)
N1	0.0197 (5)	0.0192 (5)	0.0295 (6)	-0.0015 (4)	-0.0035 (4)	-0.0006 (4)
N2	0.0175 (5)	0.0233 (6)	0.0294 (6)	0.0008 (4)	-0.0015 (4)	0.0036 (4)
N3	0.0215 (5)	0.0300 (6)	0.0199 (5)	0.0000 (4)	-0.0019 (4)	0.0000 (4)
C1	0.0278 (7)	0.0187 (6)	0.0375 (8)	-0.0030 (5)	-0.0046 (6)	-0.0024 (5)
C2	0.0300 (7)	0.0199 (6)	0.0352 (7)	0.0038 (5)	-0.0011 (6)	-0.0005 (5)
C3	0.0209 (6)	0.0265 (7)	0.0326 (7)	0.0050 (5)	-0.0013 (5)	0.0033 (5)
C4	0.0183 (6)	0.0186 (6)	0.0173 (6)	-0.0010 (4)	0.0003 (4)	0.0019 (4)
C5	0.0150 (5)	0.0133 (5)	0.0255 (6)	-0.0016 (4)	-0.0025 (5)	0.0005 (4)
C6	0.0237 (6)	0.0193 (6)	0.0186 (6)	-0.0031 (5)	-0.0010 (5)	0.0015 (4)
C7	0.0215 (6)	0.0224 (6)	0.0214 (6)	0.0007 (5)	0.0046 (5)	-0.0013 (5)
C8	0.0154 (5)	0.0213 (6)	0.0240 (6)	0.0022 (4)	0.0007 (5)	-0.0010 (5)
C9	0.0185 (6)	0.0182 (5)	0.0175 (6)	-0.0013 (4)	-0.0012 (4)	-0.0005 (4)
C10	0.0152 (5)	0.0173 (5)	0.0214 (6)	-0.0010 (4)	0.0023 (4)	-0.0021 (4)

Geometric parameters (\AA , $^\circ$)

O1—C4	1.3613 (15)	C2—H2	0.9500
O1—C5	1.4029 (14)	C3—H3	0.9500
O2—N3	1.2252 (14)	C5—C10	1.3819 (17)
O3—N3	1.2256 (15)	C5—C6	1.3852 (17)
N1—C4	1.3225 (16)	C6—C7	1.3872 (18)
N1—C1	1.3392 (17)	C6—H6	0.9500
N2—C4	1.3273 (16)	C7—C8	1.3907 (18)
N2—C3	1.3332 (17)	C7—H7	0.9500
N3—C9	1.4720 (16)	C8—C9	1.3801 (17)
C1—C2	1.379 (2)	C8—H8	0.9500
C1—H1	0.9500	C9—C10	1.3867 (17)
C2—C3	1.384 (2)	C10—H10	0.9500
C4—O1—C5	117.41 (9)	C10—C5—C6	122.42 (11)
C4—N1—C1	114.73 (11)	C10—C5—O1	118.01 (10)
C4—N2—C3	114.50 (11)	C6—C5—O1	119.37 (11)
O2—N3—O3	123.73 (11)	C5—C6—C7	118.97 (11)
O2—N3—C9	118.44 (11)	C5—C6—H6	120.5
O3—N3—C9	117.82 (11)	C7—C6—H6	120.5
N1—C1—C2	122.68 (13)	C6—C7—C8	120.65 (11)
N1—C1—H1	118.7	C6—C7—H7	119.7
C2—C1—H1	118.7	C8—C7—H7	119.7
C1—C2—C3	116.25 (12)	C9—C8—C7	117.91 (11)
C1—C2—H2	121.9	C9—C8—H8	121.0
C3—C2—H2	121.9	C7—C8—H8	121.0
N2—C3—C2	122.96 (12)	C8—C9—C10	123.55 (11)

N2—C3—H3	118.5	C8—C9—N3	118.55 (11)
C2—C3—H3	118.5	C10—C9—N3	117.88 (11)
N1—C4—N2	128.87 (12)	C5—C10—C9	116.49 (11)
N1—C4—O1	118.10 (11)	C5—C10—H10	121.8
N2—C4—O1	113.03 (10)	C9—C10—H10	121.8
C4—N1—C1—C2	-0.6 (2)	O1—C5—C6—C7	175.68 (10)
N1—C1—C2—C3	0.5 (2)	C5—C6—C7—C8	-0.65 (18)
C4—N2—C3—C2	-0.3 (2)	C6—C7—C8—C9	-0.02 (18)
C1—C2—C3—N2	0.0 (2)	C7—C8—C9—C10	0.66 (18)
C1—N1—C4—N2	0.2 (2)	C7—C8—C9—N3	-178.15 (11)
C1—N1—C4—O1	179.32 (11)	O2—N3—C9—C8	171.09 (11)
C3—N2—C4—N1	0.3 (2)	O3—N3—C9—C8	-7.71 (18)
C3—N2—C4—O1	-178.92 (11)	O2—N3—C9—C10	-7.78 (17)
C5—O1—C4—N1	-0.16 (16)	O3—N3—C9—C10	173.41 (13)
C5—O1—C4—N2	179.13 (10)	C6—C5—C10—C9	-0.15 (17)
C4—O1—C5—C10	-94.96 (13)	O1—C5—C10—C9	-175.15 (10)
C4—O1—C5—C6	89.88 (13)	C8—C9—C10—C5	-0.57 (18)
C10—C5—C6—C7	0.74 (18)	N3—C9—C10—C5	178.25 (10)
