

Acta Crystallographica Section E

Structure Reports

Online

ISSN 1600-5368

8,8-Diethyl-1,4,5,8-tetrahydro-naphthalene-1,4,5-trione

 Andrés Vega,^a Oney Ramirez-Rodríguez,^b Maximiliano Martínez-Cifuentes,^b Andrés Ibañez^c and Ramiro Araya-Maturana^{b*}

^aUniversidad Andres Bello, Departamento de Ciencias Químicas, Av Republica 275, Santiago, Chile, ^bDepartamento de Química Orgánica, Facultad de Ciencias Químicas y Farmacéuticas, Universidad de Chile, Chile, and ^cCIMAT, Universidad de Chile, Av. Blanco Encalada 2008, Santiago, Chile
Correspondence e-mail: raraya@ciq.uchile.cl

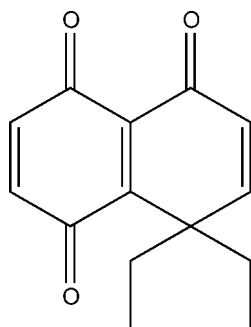
Received 2 December 2008; accepted 14 January 2009

Key indicators: single-crystal X-ray study; $T = 150$ K; mean $\sigma(\text{C}-\text{C}) = 0.002$ Å; disorder in main residue; R factor = 0.036; wR factor = 0.099; data-to-parameter ratio = 13.0.

The title molecule, $\text{C}_{14}\text{H}_{14}\text{O}_3$, contains two fused six-membered carbon rings with keto groups at positions 1, 4 and 5 and a *gem*-diethyl group at position 8. The molecule is close to planar (maximum deviation = 0.044 Å), with one ethyl group at each side of the molecular plane, with exception of the keto group at position 1 which is slightly deviated from the plane and disordered over two positions one on each side of it (occupancies 0.80/0.20). The packing of the molecule shows weak bonded chains along a through $\text{C}-\text{H}\cdots\text{O}$ contacts and two intramolecular $\text{C}-\text{H}\cdots\text{O}$ interactions are also present.

Related literature

For the biologically active dimethyl analog, see: Araya-Maturana *et al.* (2002); for its use as a substrate for Diels-Alder cycloadditions with 2,4-hexadienol, see: Araya-Maturana *et al.* (1999) and for the synthesis of biologically active compounds, see: Araya-Maturana *et al.* (2006); Mendoza *et al.* (2005); Rodríguez *et al.* (2007). For details of the synthesis of the 4,4-dimethyl analog, see: Castro *et al.* (1983); Vega *et al.* (2008).



Experimental

Crystal data

| | |
|--|-----------------------------------|
| $\text{C}_{14}\text{H}_{14}\text{O}_3$ | $V = 1219.72$ (13) Å ³ |
| $M_r = 230.25$ | $Z = 4$ |
| Orthorhombic, $Pna2_1$ | Mo $K\alpha$ radiation |
| $a = 12.7454$ (8) Å | $\mu = 0.09$ mm ⁻¹ |
| $b = 10.8015$ (7) Å | $T = 150$ (2) K |
| $c = 8.8598$ (5) Å | $0.49 \times 0.48 \times 0.46$ mm |

Data collection

| | |
|--|--|
| Siemens SMART CCD area-detector diffractometer | 6581 measured reflections |
| Absorption correction: multi-scan (SADABS; Bruker, 1999) | 2159 independent reflections |
| $T_{\min} = 0.958$, $T_{\max} = 0.961$ | 2119 reflections with $I > 2\sigma(I)$ |
| | $R_{\text{int}} = 0.012$ |

Refinement

| | |
|---------------------------------|---|
| $R[F^2 > 2\sigma(F^2)] = 0.036$ | 15 restraints |
| $wR(F^2) = 0.099$ | H-atom parameters constrained |
| $S = 1.00$ | $\Delta\rho_{\text{max}} = 0.26$ e Å ⁻³ |
| 2159 reflections | $\Delta\rho_{\text{min}} = -0.15$ e Å ⁻³ |
| 166 parameters | |

Table 1

Hydrogen-bond geometry (Å, °).

| $D-\text{H}\cdots A$ | $D-\text{H}$ | $\text{H}\cdots A$ | $D\cdots A$ | $D-\text{H}\cdots A$ |
|---|--------------|--------------------|-------------|----------------------|
| $\text{C3}-\text{H3}\cdots\text{O1}^1$ | 0.95 | 2.27 | 3.207 (2) | 169 |
| $\text{C9}-\text{H9A}\cdots\text{O2}$ | 0.99 | 2.40 | 3.014 (2) | 120 |
| $\text{C11}-\text{H11B}\cdots\text{O2}$ | 0.99 | 2.39 | 3.027 (2) | 122 |

 Symmetry code: (i) $x + \frac{1}{2}, -y + \frac{3}{2}, z$.

Data collection: *SMART-NT* (Bruker, 2001); cell refinement: *SAINT-NT* (Bruker, 1999); data reduction: *SAINT-NT*; program(s) used to solve structure: *SHELXTL-NT* (Sheldrick, 2008); program(s) used to refine structure: *SHELXTL-NT*; molecular graphics: *SHELXTL-NT*; software used to prepare material for publication: *SHELXTL-NT*.

The authors gratefully acknowledge generous financial support from FONDECYT 1071077.

Supplementary data and figures for this paper are available from the IUCr electronic archives (Reference: GW2058).

References

- Araya-Maturana, R., Cardona, W., Cassels, B. K., Delgado-Castro, T., Soto-Delgado, J., Pessoa-Mahana, H., Weiss-López, B., Pavani, M. & Ferreira, J. (2006). *Bioorg. Med. Chem.* **14**, 4664–4669.
- Araya-Maturana, R., Cassels, B. K., Delgado-Castro, T., Valderrama, J. A. & Weiss-Lopez, B. (1999). *Tetrahedron*, **55**, 637–648.
- Araya-Maturana, R., Delgado-Castro, T., Garate, M., Ferreira, J., Pavani, M., Pessoa-Mahana, H. & Cassels, B. K. (2002). *Bioorg. Med. Chem.* **10**, 3057–3060.
- Bruker (1999). *SAINT-NT*. Bruker AXS Inc., Madison, Wisconsin, USA.
- Bruker (2001). *SMART-NT*. Bruker AXS Inc., Madison, Wisconsin, USA.
- Castro, C. G., Santos, J. G., Valcarce, J. C. & Valderrama, J. A. (1983). *J. Org. Chem.* **48**, 3026–3029.
- Mendoza, L., Araya-Maturana, R., Cardona, W., Delgado-Castro, T., García, C., Lagos, C. & Cotoras, M. (2005). *J. Agric. Food Chem.* **53**, 10080–10084.
- Rodríguez, J., Olea-Azar, C., Cavieres, C., Norambuena, E., Delgado-Castro, T., Soto-Delgado, J. & Araya-Maturana, R. (2007). *Bioorg. Med. Chem.* **15**, 7058–7065.
- Sheldrick, G. M. (2008). *Acta Cryst.* **A64**, 112–122.
- Vega, A., Ramírez-Rodríguez, O., Martínez-Cifuentes, M., Ibañez, A. & Araya-Maturana, R. (2008). *Acta Cryst.* **E64**, o2329.

supporting information

Acta Cryst. (2009). E65, o345 [doi:10.1107/S1600536809001755]

8,8-Diethyl-1,4,5,8-tetrahydronaphthalene-1,4,5-trione

Andrés Vega, Oney Ramirez-Rodríguez, Maximiliano Martínez-Cifuentes, Andrés Ibañez and Ramiro Araya-Maturana

S1. Comment

The title quinone (**I**) is closely related to its biologically active dimethyl analog 8,8-dimethylnaphthalene-1,4,5(8H)-trione (Araya-Maturana *et al.* 2002), which has been used as substrate for highly regioselective Diels-Alder cycloadditions with 2,4-hexadienol (Araya-Maturana *et al.* 1999) and for the synthesis of biologically active compounds (Rodríguez *et al.* 2007; Araya-Maturana *et al.* 2006; Mendoza *et al.* 2005). The ¹H-NMR spectrum of the title compound exhibits equivalence of both ethyl groups, evidencing the existence of a symmetry plane in the molecule. It displays a single triplet for both methyl groups but two sextuplets for the methylene protons of the ethyl substituents; with couplings constant of 7.3 Hz and 15.4 Hz for the vicinal and geminal ones respectively. This evidences a rotational restriction for the chains. The non-equivalence of the signals of methylene protons in a non-chiral molecule could be envisioned supposing a rotational constrain exerted by the non bonding electrons of the near carbonyl group, avoiding the rotation of the bond between methylene groups and the quaternary carbon bearing the geminal ethyl groups. This hypothesis based on NMR solution data was tested for the present crystal structure.

The molecule **I** contains two six membered carbon rings fused, a *p*-quinone and a dienone core (Scheme 1). The dienone ring is highly planar mainly because of the insaturations in the carbon skeleton, while the quinonic framework displays a slightly distorted boat conformation, with one keto oxygen atom slightly out of the plane of the rest of the ring (see torsion angles). As described in the experimental section, the keto oxygen atom O3 is disordered over two positions of occupancy 0.80 and 0.20. placed at opposite sides of the molecular plane. This could be related to the equivalence of the methylene ¹H-NMR signals in solution in the following way: the two conformations are probably very close (if not equal) in energy and rapid interconversion occurs in the NMR timescale. The situation is consistent with the observation of two positions for the keto oxygen atom in the crystal structure.

The crystal packing of the molecule shows weak bonded zigzag chains along the a cell axis, through C—H⋯O interactions, as depicted in Figure 2.

S2. Experimental

Synthesis of I. The title compound was prepared by oxydation of the corresponding hydroquinone **B**; obtained by rearrangement of the furane parent compound **A** (Vega *et al.*, 2008); with MnO₂ as shown in Fig. 3. This procedure have been previously described for the 4,4-dimethyl analog (Castro *et al.*, 1983). X-ray quality crystals were obtained through recrystallization from benzene.

Spectroscopic Details. ¹H and ¹³C NMR spectra were acquired using a Bruker AVANCE DRX 300 spectrometer operating at 300.13 MHz (¹H) or 75.47 MHz (¹³C). All measurements were carried out at a probe temperature of 300 K. ¹HNMR (CDCl₃): 0.62(6H, t, *J* = 7.5 Hz, 2X CH₃); 1.70(2H, dq, *J*₁ = 7.5 Hz, *J*₂ = 13.8 Hz, 2X CHH₂); 2.52(2H, dq, *J*₁ = 7.5 Hz, *J*₂ = 13.8 Hz, 2X CHH); 6.53(1H, d, *J* = 10.2 Hz); 6.58(1H, d, *J* = 10.2 Hz). ¹³CNMR(CDCl₃): 8.42, 31.41, 48.13,

130.77, 132.79, 135.32, 135.57, 152.59, 154.51, 182.46, 183.13, 186.76.

S3. Refinement

The hydrogen atoms positions were calculated after each cycle of refinement with *SHELXL* (Bruker, 1999) using a riding model for each structure, with C—H distances in the range 0.96 to 1.00 Å. $U_{\text{iso}}(\text{H})$ values were set equal to $1.5U_{\text{eq}}$ of the parent carbon atom for methyl groups and $1.2U_{\text{eq}}$ for the others. During the final stages of refinement some disorder on the position of the oxo oxygen atom O3 was evident. It was modelled using two positions labelled *i* and *ii* with partial occupation of 0.80 and 0.20 respectively.

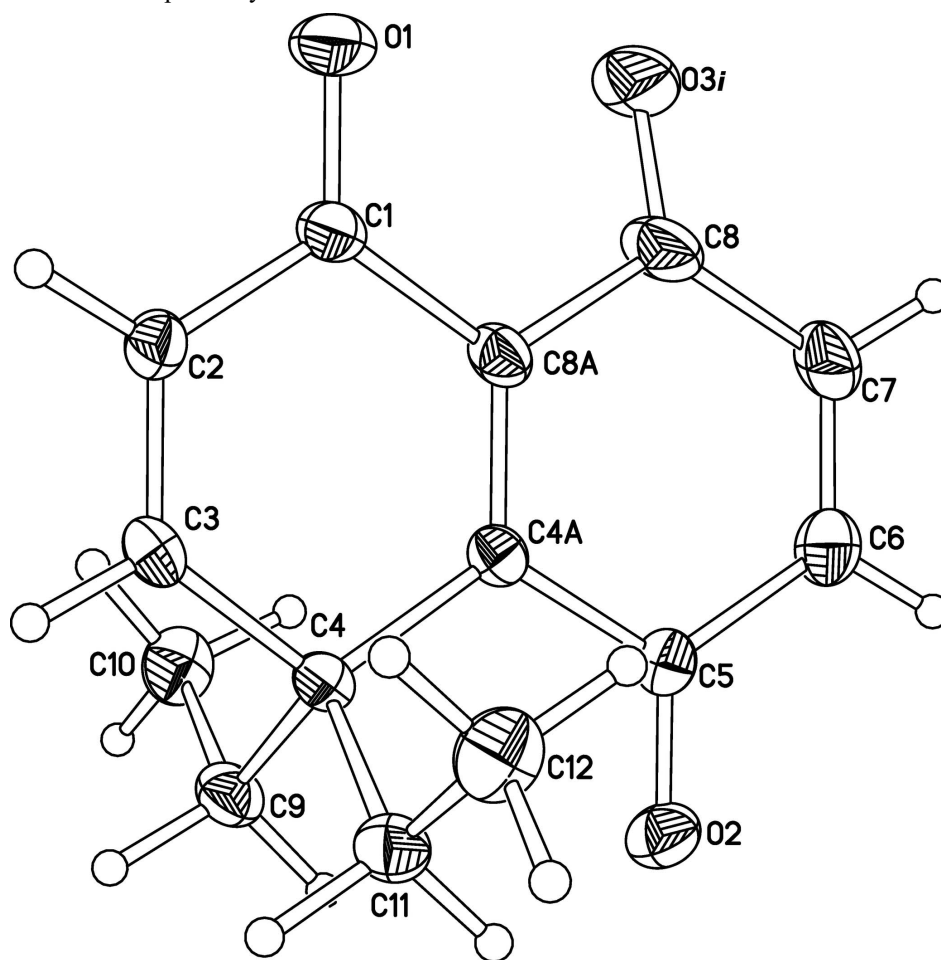


Figure 1

Molecular structure diagrams for **I** showing numbering scheme. Displacement ellipsoids are at 50% probability level and H atoms are shown as spheres of arbitrary radii. The less occupied disordered position (see experimental) for O3 (*ii*) was omitted for clarity.

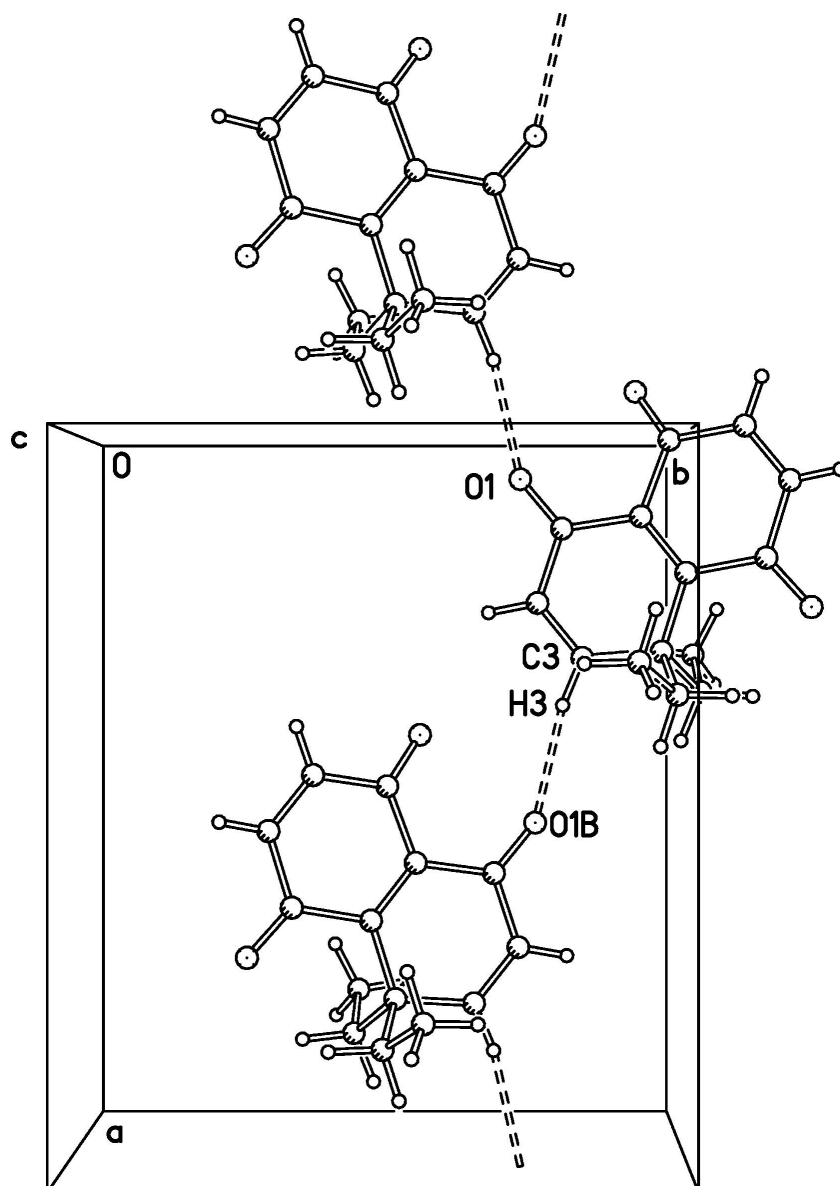
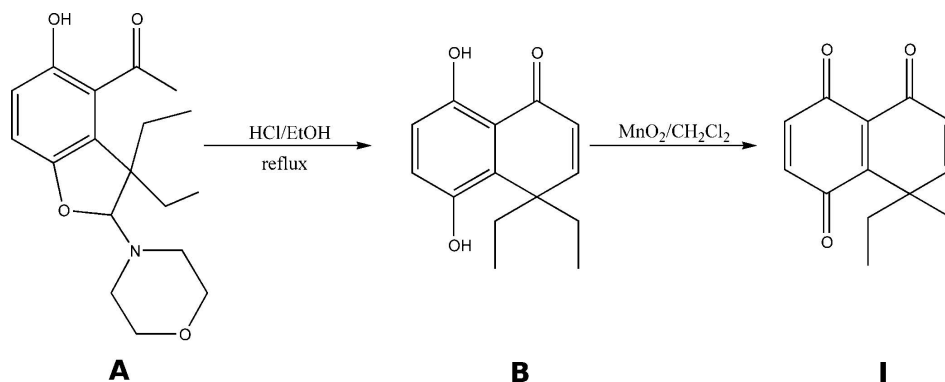


Figure 2

Packing structure of **I** showing weak bonded chains along *a*.


Figure 3

Preparation of the title compound.

8,8-Diethyl-1,4,5,8-tetrahydronaphthalene-1,4,5-trione
Crystal data
 $C_{14}H_{14}O_3$
 $M_r = 230.25$

 Orthorhombic, $Pna2_1$

Hall symbol: P 2c -2n

 $a = 12.7454 (8) \text{ \AA}$
 $b = 10.8015 (7) \text{ \AA}$
 $c = 8.8598 (5) \text{ \AA}$
 $V = 1219.72 (13) \text{ \AA}^3$
 $Z = 4$
 $F(000) = 488$
 $D_x = 1.254 \text{ Mg m}^{-3}$

 Mo $K\alpha$ radiation, $\lambda = 0.71073 \text{ \AA}$

Cell parameters from 4760 reflections

 $\theta = 24.9\text{--}50.1^\circ$
 $\mu = 0.09 \text{ mm}^{-1}$
 $T = 150 \text{ K}$

Block, red

 $0.49 \times 0.48 \times 0.46 \text{ mm}$
Data collection

 Siemens SMART CCD area-detector
diffractometer

Radiation source: fine-focus sealed tube

Graphite monochromator

 φ and ω scans

 Absorption correction: multi-scan
(SADABS; Bruker, 1999)

 $T_{\min} = 0.958, T_{\max} = 0.961$

6581 measured reflections

2159 independent reflections

 2119 reflections with $I > 2\sigma(I)$
 $R_{\text{int}} = 0.012$
 $\theta_{\max} = 25.1^\circ, \theta_{\min} = 2.5^\circ$
 $h = -15 \rightarrow 15$
 $k = -12 \rightarrow 12$
 $l = -10 \rightarrow 10$
Refinement

 Refinement on F^2

Least-squares matrix: full

 $R[F^2 > 2\sigma(F^2)] = 0.036$
 $wR(F^2) = 0.099$
 $S = 1.00$

2159 reflections

166 parameters

15 restraints

 Primary atom site location: structure-invariant
direct methods

 Secondary atom site location: difference Fourier
map

 Hydrogen site location: inferred from
neighbouring sites

H-atom parameters constrained

 $w = 1/[\sigma^2(F_o^2) + (0.0642P)^2 + 0.3077P]$

 where $P = (F_o^2 + 2F_c^2)/3$
 $(\Delta/\sigma)_{\max} < 0.001$
 $\Delta\rho_{\max} = 0.26 \text{ e \AA}^{-3}$
 $\Delta\rho_{\min} = -0.15 \text{ e \AA}^{-3}$

Special details

Experimental. 0.3 ° between frames and 10 secs exposure (per frame)

Geometry. All e.s.d.'s (except the e.s.d. in the dihedral angle between two l.s. planes) are estimated using the full covariance matrix. The cell e.s.d.'s are taken into account individually in the estimation of e.s.d.'s in distances, angles and torsion angles; correlations between e.s.d.'s in cell parameters are only used when they are defined by crystal symmetry. An approximate (isotropic) treatment of cell e.s.d.'s is used for estimating e.s.d.'s involving l.s. planes.

Refinement. Refinement of F^2 against ALL reflections. The weighted R -factor wR and goodness of fit S are based on F^2 , conventional R -factors R are based on F , with F set to zero for negative F^2 . The threshold expression of $F^2 > \sigma(F^2)$ is used only for calculating R -factors(gt) *etc.* and is not relevant to the choice of reflections for refinement. R -factors based on F^2 are statistically about twice as large as those based on F , and R -factors based on ALL data will be even larger.

Fractional atomic coordinates and isotropic or equivalent isotropic displacement parameters (\AA^2)

| | <i>x</i> | <i>y</i> | <i>z</i> | $U_{\text{iso}}^*/U_{\text{eq}}$ | Occ. (<1) |
|------|---------------|--------------|--------------|----------------------------------|-----------|
| O1 | 0.05513 (10) | 0.73723 (13) | 0.2345 (2) | 0.0588 (5) | |
| C1 | 0.12734 (12) | 0.80829 (16) | 0.2581 (2) | 0.0312 (4) | |
| C2 | 0.23531 (13) | 0.76647 (15) | 0.24985 (19) | 0.0298 (4) | |
| H2 | 0.2495 | 0.6828 | 0.2240 | 0.036* | |
| C3 | 0.31458 (12) | 0.84252 (16) | 0.2775 (2) | 0.0298 (4) | |
| H3 | 0.3834 | 0.8091 | 0.2713 | 0.036* | |
| C4 | 0.30503 (12) | 0.97639 (16) | 0.3177 (2) | 0.0264 (4) | |
| C9 | 0.36538 (13) | 1.04995 (17) | 0.1926 (2) | 0.0343 (4) | |
| H9A | 0.3713 | 1.1375 | 0.2244 | 0.041* | |
| H9B | 0.4373 | 1.0161 | 0.1842 | 0.041* | |
| C10 | 0.31363 (17) | 1.04521 (19) | 0.0381 (2) | 0.0428 (5) | |
| H10A | 0.3037 | 0.9587 | 0.0080 | 0.064* | |
| H10B | 0.3585 | 1.0871 | -0.0358 | 0.064* | |
| H10C | 0.2454 | 1.0868 | 0.0426 | 0.064* | |
| C11 | 0.36382 (13) | 0.99525 (17) | 0.4703 (2) | 0.0341 (4) | |
| H11A | 0.4375 | 0.9680 | 0.4579 | 0.041* | |
| H11B | 0.3648 | 1.0847 | 0.4944 | 0.041* | |
| C12 | 0.31612 (17) | 0.92627 (19) | 0.6018 (2) | 0.0446 (5) | |
| H12A | 0.2431 | 0.9523 | 0.6151 | 0.067* | |
| H12B | 0.3559 | 0.9446 | 0.6938 | 0.067* | |
| H12C | 0.3185 | 0.8371 | 0.5818 | 0.067* | |
| C4A | 0.19164 (12) | 1.01751 (15) | 0.32711 (18) | 0.0257 (3) | |
| C5 | 0.17023 (12) | 1.15035 (15) | 0.3703 (2) | 0.0302 (4) | |
| O2 | 0.24055 (10) | 1.22495 (10) | 0.38734 (17) | 0.0391 (3) | |
| C6 | 0.05978 (14) | 1.18870 (18) | 0.3909 (3) | 0.0440 (5) | |
| H6 | 0.0453 | 1.2693 | 0.4283 | 0.053* | |
| C7 | -0.01884 (14) | 1.11471 (18) | 0.3592 (3) | 0.0444 (5) | |
| H7 | -0.0887 | 1.1421 | 0.3759 | 0.053* | |
| C8 | -0.00040 (15) | 0.9904 (2) | 0.2982 (3) | 0.0515 (6) | |
| O3i | -0.07253 (14) | 0.93529 (18) | 0.2268 (3) | 0.0604 (6) | 0.80 |
| O3ii | -0.0669 (5) | 0.9189 (6) | 0.3592 (11) | 0.063 (2) | 0.20 |
| C8A | 0.11022 (12) | 0.94198 (15) | 0.2963 (2) | 0.0304 (4) | |

Atomic displacement parameters (\AA^2)

| | U^{11} | U^{22} | U^{33} | U^{12} | U^{13} | U^{23} |
|------|-------------|-------------|-------------|-------------|--------------|--------------|
| O1 | 0.0288 (7) | 0.0394 (7) | 0.1082 (15) | -0.0062 (6) | -0.0007 (8) | -0.0163 (8) |
| C1 | 0.0240 (8) | 0.0302 (8) | 0.0396 (10) | -0.0027 (7) | 0.0001 (7) | 0.0002 (7) |
| C2 | 0.0308 (8) | 0.0257 (8) | 0.0329 (10) | 0.0031 (6) | 0.0016 (7) | -0.0017 (7) |
| C3 | 0.0214 (7) | 0.0342 (8) | 0.0338 (9) | 0.0049 (6) | 0.0014 (7) | 0.0024 (7) |
| C4 | 0.0215 (7) | 0.0294 (8) | 0.0284 (8) | -0.0011 (6) | 0.0010 (6) | 0.0005 (7) |
| C9 | 0.0282 (8) | 0.0360 (9) | 0.0388 (10) | -0.0042 (7) | 0.0057 (7) | 0.0027 (7) |
| C10 | 0.0515 (12) | 0.0436 (11) | 0.0332 (10) | -0.0007 (9) | 0.0069 (9) | 0.0041 (8) |
| C11 | 0.0287 (8) | 0.0394 (9) | 0.0341 (9) | 0.0005 (7) | -0.0061 (7) | -0.0012 (8) |
| C12 | 0.0541 (12) | 0.0486 (11) | 0.0311 (10) | 0.0022 (9) | -0.0036 (9) | 0.0016 (9) |
| C4A | 0.0235 (7) | 0.0284 (8) | 0.0251 (8) | 0.0014 (6) | -0.0006 (6) | 0.0021 (6) |
| C5 | 0.0325 (8) | 0.0293 (8) | 0.0288 (8) | 0.0035 (7) | -0.0009 (7) | 0.0004 (7) |
| O2 | 0.0424 (7) | 0.0303 (6) | 0.0446 (8) | -0.0047 (5) | -0.0031 (6) | -0.0033 (6) |
| C6 | 0.0392 (10) | 0.0339 (9) | 0.0589 (13) | 0.0110 (8) | 0.0016 (10) | -0.0084 (10) |
| C7 | 0.0287 (9) | 0.0454 (11) | 0.0591 (12) | 0.0122 (8) | 0.0028 (9) | -0.0022 (9) |
| C8 | 0.0220 (8) | 0.0379 (9) | 0.0946 (17) | 0.0012 (7) | 0.0008 (10) | -0.0040 (11) |
| O3i | 0.0286 (9) | 0.0545 (11) | 0.0980 (17) | 0.0031 (8) | -0.0155 (11) | -0.0103 (12) |
| O3ii | 0.016 (3) | 0.050 (4) | 0.122 (7) | -0.006 (3) | 0.012 (4) | -0.032 (5) |
| C8A | 0.0219 (8) | 0.0308 (8) | 0.0385 (9) | 0.0031 (6) | 0.0008 (7) | 0.0020 (7) |

Geometric parameters (\AA , $^\circ$)

| | | | |
|-----------|-------------|---------------|-----------|
| O1—C1 | 1.217 (2) | C11—H11A | 0.9900 |
| C1—C2 | 1.450 (2) | C11—H11B | 0.9900 |
| C1—C8A | 1.499 (2) | C12—H12A | 0.9800 |
| C2—C3 | 1.325 (2) | C12—H12B | 0.9800 |
| C2—H2 | 0.9500 | C12—H12C | 0.9800 |
| C3—C4 | 1.494 (2) | C4A—C8A | 1.348 (2) |
| C3—H3 | 0.9500 | C4A—C5 | 1.510 (2) |
| C4—C4A | 1.514 (2) | C5—O2 | 1.215 (2) |
| C4—C11 | 1.559 (2) | C5—C6 | 1.479 (2) |
| C4—C9 | 1.566 (2) | C6—C7 | 1.312 (3) |
| C9—C10 | 1.520 (3) | C6—H6 | 0.9500 |
| C9—H9A | 0.9900 | C7—C8 | 1.467 (3) |
| C9—H9B | 0.9900 | C7—H7 | 0.9500 |
| C10—H10A | 0.9800 | C8—O3i | 1.264 (3) |
| C10—H10B | 0.9800 | C8—O3ii | 1.267 (3) |
| C10—H10C | 0.9800 | C8—C8A | 1.504 (2) |
| C11—C12 | 1.511 (3) | | |
| O1—C1—C2 | 120.84 (16) | C12—C11—H11B | 108.7 |
| O1—C1—C8A | 122.44 (15) | C4—C11—H11B | 108.7 |
| C2—C1—C8A | 116.72 (14) | H11A—C11—H11B | 107.6 |
| C3—C2—C1 | 121.40 (15) | C11—C12—H12A | 109.5 |
| C3—C2—H2 | 119.3 | C11—C12—H12B | 109.5 |
| C1—C2—H2 | 119.3 | H12A—C12—H12B | 109.5 |

| | | | |
|----------------|--------------|-----------------|--------------|
| C2—C3—C4 | 125.59 (15) | C11—C12—H12C | 109.5 |
| C2—C3—H3 | 117.2 | H12A—C12—H12C | 109.5 |
| C4—C3—H3 | 117.2 | H12B—C12—H12C | 109.5 |
| C3—C4—C4A | 112.01 (13) | C8A—C4A—C5 | 119.17 (14) |
| C3—C4—C11 | 107.09 (15) | C8A—C4A—C4 | 123.10 (14) |
| C4A—C4—C11 | 111.88 (13) | C5—C4A—C4 | 117.72 (13) |
| C3—C4—C9 | 106.41 (14) | O2—C5—C6 | 120.09 (15) |
| C4A—C4—C9 | 111.04 (13) | O2—C5—C4A | 121.91 (14) |
| C11—C4—C9 | 108.14 (13) | C6—C5—C4A | 118.00 (14) |
| C10—C9—C4 | 114.02 (15) | C7—C6—C5 | 122.00 (16) |
| C10—C9—H9A | 108.7 | C7—C6—H6 | 119.0 |
| C4—C9—H9A | 108.7 | C5—C6—H6 | 119.0 |
| C10—C9—H9B | 108.7 | C6—C7—C8 | 120.96 (16) |
| C4—C9—H9B | 108.7 | C6—C7—H7 | 119.5 |
| H9A—C9—H9B | 107.6 | C8—C7—H7 | 119.5 |
| C9—C10—H10A | 109.5 | O3i—C8—O3ii | 56.0 (4) |
| C9—C10—H10B | 109.5 | O3i—C8—C7 | 119.90 (18) |
| H10A—C10—H10B | 109.5 | O3ii—C8—C7 | 107.1 (4) |
| C9—C10—H10C | 109.5 | O3i—C8—C8A | 120.9 (2) |
| H10A—C10—H10C | 109.5 | O3ii—C8—C8A | 114.8 (4) |
| H10B—C10—H10C | 109.5 | C7—C8—C8A | 118.20 (17) |
| C12—C11—C4 | 114.25 (14) | C4A—C8A—C1 | 121.11 (14) |
| C12—C11—H11A | 108.7 | C4A—C8A—C8 | 120.61 (15) |
| C4—C11—H11A | 108.7 | C1—C8A—C8 | 118.27 (15) |
| O1—C1—C2—C3 | -178.98 (19) | C4—C4A—C5—C6 | -175.48 (16) |
| C8A—C1—C2—C3 | 1.2 (2) | O2—C5—C6—C7 | 173.1 (2) |
| C1—C2—C3—C4 | -0.7 (3) | C4A—C5—C6—C7 | -6.5 (3) |
| C2—C3—C4—C4A | 1.2 (3) | C5—C6—C7—C8 | -1.3 (3) |
| C2—C3—C4—C11 | 124.22 (18) | C6—C7—C8—O3i | -158.7 (3) |
| C2—C3—C4—C9 | -120.31 (19) | C6—C7—C8—O3ii | 141.2 (5) |
| C3—C4—C9—C10 | 68.10 (19) | C6—C7—C8—C8A | 9.7 (3) |
| C4A—C4—C9—C10 | -54.0 (2) | C5—C4A—C8A—C1 | -177.87 (16) |
| C11—C4—C9—C10 | -177.13 (15) | C4—C4A—C8A—C1 | 3.4 (3) |
| C3—C4—C11—C12 | -64.03 (18) | C5—C4A—C8A—C8 | 2.6 (3) |
| C4A—C4—C11—C12 | 59.1 (2) | C4—C4A—C8A—C8 | -176.14 (17) |
| C9—C4—C11—C12 | -178.34 (15) | O1—C1—C8A—C4A | 177.64 (19) |
| C3—C4—C4A—C8A | -2.6 (2) | C2—C1—C8A—C4A | -2.6 (2) |
| C11—C4—C4A—C8A | -122.82 (18) | O1—C1—C8A—C8 | -2.9 (3) |
| C9—C4—C4A—C8A | 116.25 (18) | C2—C1—C8A—C8 | 176.95 (18) |
| C3—C4—C4A—C5 | 178.65 (16) | O3i—C8—C8A—C4A | 157.9 (2) |
| C11—C4—C4A—C5 | 58.39 (19) | O3ii—C8—C8A—C4A | -138.3 (5) |
| C9—C4—C4A—C5 | -62.53 (18) | C7—C8—C8A—C4A | -10.3 (3) |
| C8A—C4A—C5—O2 | -173.95 (17) | O3i—C8—C8A—C1 | -21.6 (3) |
| C4—C4A—C5—O2 | 4.9 (2) | O3ii—C8—C8A—C1 | 42.2 (5) |
| C8A—C4A—C5—C6 | 5.7 (3) | C7—C8—C8A—C1 | 170.2 (2) |

Hydrogen-bond geometry (Å, °)

| <i>D</i> —H \cdots <i>A</i> | <i>D</i> —H | H \cdots <i>A</i> | <i>D</i> \cdots <i>A</i> | <i>D</i> —H \cdots <i>A</i> |
|--------------------------------|-------------|---------------------|----------------------------|-------------------------------|
| C3—H3 \cdots O1 ⁱ | 0.95 | 2.27 | 3.207 (2) | 169 |
| C9—H9 <i>A</i> \cdots O2 | 0.99 | 2.40 | 3.014 (2) | 120 |
| C11—H11 <i>B</i> \cdots O2 | 0.99 | 2.39 | 3.027 (2) | 122 |

Symmetry code: (i) $x+1/2, -y+3/2, z$.