

Acta Crystallographica Section E

## Structure Reports

Online

ISSN 1600-5368

 4-Chloro-*N*-(pyrazin-2-yl)aniline

Wan Ainna Mardhiah Wan Saffiee, Azila Idris, Zaharah Aiyub, Zanariah Abdullah and Seik Weng Ng\*

 Department of Chemistry, University of Malaya, 50603 Kuala Lumpur, Malaysia  
 Correspondence e-mail: seikweng@um.edu.my

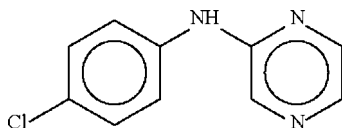
Received 4 December 2008; accepted 5 December 2008

 Key indicators: single-crystal X-ray study;  $T = 100$  K; mean  $\sigma(\text{C}-\text{C}) = 0.003$  Å;  $R$  factor = 0.037;  $wR$  factor = 0.128; data-to-parameter ratio = 15.8.

In the title compound,  $\text{C}_{10}\text{H}_8\text{ClN}_3$ , the dihedral angle between the aromatic rings is  $43.0(1)^\circ$  and the bridging  $\text{C}-\text{N}-\text{C}$  angle is  $128.19(16)^\circ$ . The amino N atom of one molecule forms a hydrogen bond to the 1-N atom of an adjacent pyrazinyl ring, generating an inversion dimer.

## Related literature

For the two polymorphs of *N*-(pyrazin-2-yl)aniline, see: Wan Saffiee *et al.* (2008a); Abdullah & Ng (2008). For *N*-(pyrazin-2-yl)-4-toluidine; see: Wan Saffiee *et al.* (2008b).



## Experimental

## Crystal data

$\text{C}_{10}\text{H}_8\text{ClN}_3$   
 $M_r = 205.64$   
 Monoclinic,  $P2_1/c$   
 $a = 12.1257(3)$  Å  
 $b = 3.7944(1)$  Å  
 $c = 19.7242(5)$  Å  
 $\beta = 91.370(2)^\circ$

$V = 907.25(4)$  Å<sup>3</sup>  
 $Z = 4$   
 Mo  $K\alpha$  radiation  
 $\mu = 0.38$  mm<sup>-1</sup>  
 $T = 100(2)$  K  
 $0.25 \times 0.05 \times 0.01$  mm

## Data collection

Bruker SMART APEX  
 diffractometer  
 Absorption correction: multi-scan  
 (*SADABS*; Sheldrick, 1996)  
 $T_{\min} = 0.912$ ,  $T_{\max} = 0.996$

7922 measured reflections  
 2073 independent reflections  
 1633 reflections with  $I > 2\sigma(I)$   
 $R_{\text{int}} = 0.033$

## Refinement

$R[F^2 > 2\sigma(F^2)] = 0.037$   
 $wR(F^2) = 0.128$   
 $S = 1.14$   
 2073 reflections  
 131 parameters  
 1 restraint

H atoms treated by a mixture of independent and constrained refinement  
 $\Delta\rho_{\max} = 0.39$  e Å<sup>-3</sup>  
 $\Delta\rho_{\min} = -0.28$  e Å<sup>-3</sup>

Table 1

Hydrogen-bond geometry (Å, °).

$D-H\cdots A$	$D-H$	$H\cdots A$	$D\cdots A$	$D-H\cdots A$
$\text{N1}-\text{H1}\cdots\text{N2}^i$	0.88 (1)	2.15 (1)	3.023 (2)	171 (2)

 Symmetry code: (i)  $-x + 1, -y + 1, -z + 1$ .

Data collection: *APEX2* (Bruker, 2007); cell refinement: *SAINT* (Bruker, 2007); data reduction: *SAINT*; program(s) used to solve structure: *SHELXS97* (Sheldrick, 2008); program(s) used to refine structure: *SHELXL97* (Sheldrick, 2008); molecular graphics: *X-SEED* (Barbour, 2001); software used to prepare material for publication: *publCIF* (Westrip, 2009).

We thank the University of Malaya for supporting this study (FS205/2008 A).

Supplementary data and figures for this paper are available from the IUCr electronic archives (Reference: TK2340).

## References

- Abdullah, Z. & Ng, S. W. (2008). *Acta Cryst.* **E64**, o2106.  
 Barbour, L. J. (2001). *J. Supramol. Chem.* **1**, 189–191.  
 Bruker (2007). *APEX2* and *SAINT*. Bruker AXS Inc., Madison, Wisconsin, USA.  
 Sheldrick, G. M. (1996). *SADABS*. University of Göttingen, Germany.  
 Sheldrick, G. M. (2008). *Acta Cryst.* **A64**, 112–122.  
 Wan Saffiee, W. A. M., Idris, A., Abdullah, Z., Aiyub, Z. & Ng, S. W. (2008a). *Acta Cryst.* **E64**, o2105.  
 Wan Saffiee, W. A. M., Idris, A., Aiyub, Z., Abdullah, Z. & Ng, S. W. (2008b). *Acta Cryst.* **E64**, o2440.  
 Westrip, S. P. (2009). *publCIF*. In preparation.

## supporting information

*Acta Cryst.* (2009). E65, o113 [doi:10.1107/S1600536808041172]

## 4-Chloro-*N*-(pyrazin-2-yl)aniline

Wan Ainna Mardhiah Wan Saffiee, Azila Idris, Zaharah Aiyub, Zanariah Abdullah and Seik Weng Ng

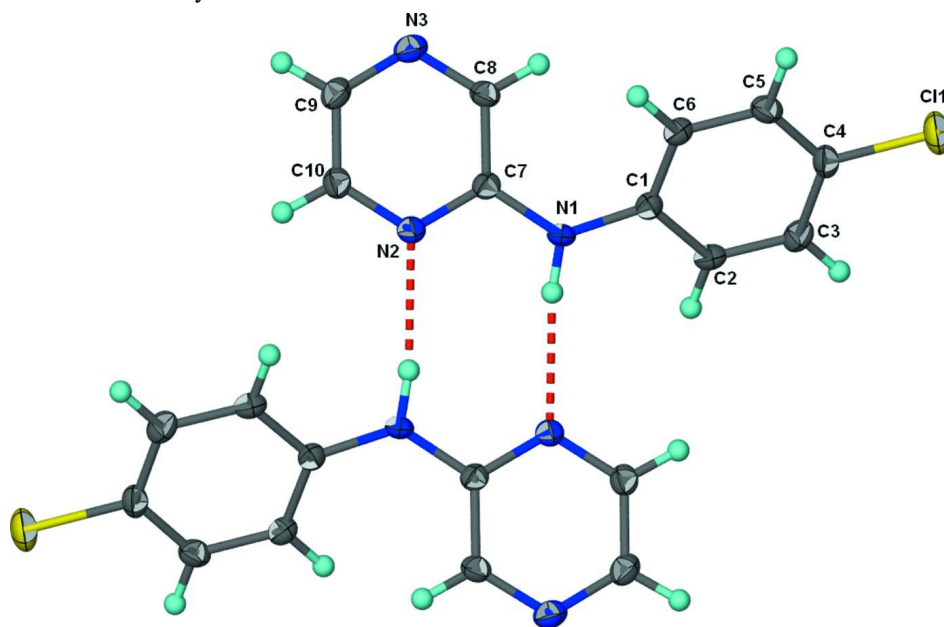
### S1. Experimental

2-Chloropyrazine (1.15 g, 10 mmol) and 4-chloroaniline (1.28 g, 10 mmol) were mixed with ethanol (2 ml) and the mixture heated at 423–433 K for 3 h. The product was dissolved in water and the solution extracted with ether. The ether phase was dried over sodium sulfate; the evaporation of the solvent gave well shaped crystals along with some unidentified brown material.

### S2. Refinement

Carbon-bound H-atoms were placed in calculated positions (C—H 0.95 Å) and were included in the refinement in the riding model approximation, with  $U(\text{H})$  set to  $1.2U_{\text{eq}}(\text{C})$ .

The amino H-atom was located in a difference Fourier map, and was refined with a distance restraint of N—H  $0.88 \pm 0.01$  Å; its temperature factor was freely refined.



**Figure 1**

Thermal ellipsoid plot (Barbour, 2001) of hydrogen-bonded dimeric structure of  $\text{C}_{10}\text{H}_8\text{ClN}_3$  at the 70% probability level. Hydrogen atoms are drawn as spheres of arbitrary radius. Hydrogen bonds are shown as red dashed lines.

4-Chloro-*N*-(pyrazin-2-yl)aniline

## Crystal data

C<sub>10</sub>H<sub>8</sub>ClN<sub>3</sub> $M_r = 205.64$ Monoclinic,  $P2_1/c$ 

Hall symbol: -P 2ybc

 $a = 12.1257 (3) \text{ \AA}$  $b = 3.7944 (1) \text{ \AA}$  $c = 19.7242 (5) \text{ \AA}$  $\beta = 91.370 (2)^\circ$  $V = 907.25 (4) \text{ \AA}^3$  $Z = 4$  $F(000) = 424$  $D_x = 1.506 \text{ Mg m}^{-3}$ Mo  $K\alpha$  radiation,  $\lambda = 0.71073 \text{ \AA}$ 

Cell parameters from 2160 reflections

 $\theta = 2.6\text{--}28.1^\circ$  $\mu = 0.38 \text{ mm}^{-1}$  $T = 100 \text{ K}$ 

Plate, yellow

 $0.25 \times 0.05 \times 0.01 \text{ mm}$ 

## Data collection

Bruker SMART APEX

diffractometer

Radiation source: fine-focus sealed tube

Graphite monochromator

 $\omega$  scans

Absorption correction: multi-scan

(SADABS; Sheldrick, 1996)

 $T_{\min} = 0.912$ ,  $T_{\max} = 0.996$ 

7922 measured reflections

2073 independent reflections

1633 reflections with  $I > 2\sigma(I)$  $R_{\text{int}} = 0.033$  $\theta_{\text{max}} = 27.5^\circ$ ,  $\theta_{\text{min}} = 1.7^\circ$  $h = -15 \rightarrow 15$  $k = -4 \rightarrow 4$  $l = -25 \rightarrow 24$ 

## Refinement

Refinement on  $F^2$ 

Least-squares matrix: full

 $R[F^2 > 2\sigma(F^2)] = 0.037$  $wR(F^2) = 0.128$  $S = 1.14$ 

2073 reflections

131 parameters

1 restraint

Primary atom site location: structure-invariant

direct methods

Secondary atom site location: difference Fourier map

Hydrogen site location: inferred from neighbouring sites

H atoms treated by a mixture of independent and constrained refinement

 $w = 1/[\sigma^2(F_o^2) + (0.0761P)^2 + 0.0551P]$ where  $P = (F_o^2 + 2F_c^2)/3$  $(\Delta/\sigma)_{\text{max}} = 0.001$  $\Delta\rho_{\text{max}} = 0.39 \text{ e \AA}^{-3}$  $\Delta\rho_{\text{min}} = -0.28 \text{ e \AA}^{-3}$ Fractional atomic coordinates and isotropic or equivalent isotropic displacement parameters ( $\text{\AA}^2$ )

	<i>x</i>	<i>y</i>	<i>z</i>	$U_{\text{iso}}^*/U_{\text{eq}}$
Cl1	1.04801 (4)	-0.07942 (15)	0.36089 (3)	0.0269 (2)
N1	0.59098 (13)	0.2944 (5)	0.43167 (8)	0.0173 (4)
H1	0.5832 (19)	0.359 (6)	0.4742 (6)	0.019 (6)*
N2	0.40848 (13)	0.4535 (5)	0.42294 (8)	0.0152 (4)
N3	0.39085 (14)	0.1755 (5)	0.29204 (8)	0.0182 (4)
C1	0.69716 (16)	0.1986 (5)	0.41131 (10)	0.0147 (4)
C2	0.76584 (16)	0.0278 (5)	0.45861 (10)	0.0165 (4)
H2	0.7381	-0.0315	0.5018	0.020*
C3	0.87334 (16)	-0.0565 (5)	0.44384 (10)	0.0181 (4)
H3	0.9196	-0.1710	0.4766	0.022*
C4	0.91273 (16)	0.0283 (5)	0.38059 (11)	0.0173 (4)
C5	0.84635 (16)	0.1980 (5)	0.33265 (10)	0.0176 (4)

H5	0.8745	0.2545	0.2894	0.021*
C6	0.73893 (16)	0.2849 (5)	0.34796 (10)	0.0155 (4)
H6	0.6935	0.4033	0.3154	0.019*
C7	0.49564 (16)	0.3053 (5)	0.39334 (9)	0.0141 (4)
C8	0.48498 (16)	0.1632 (5)	0.32725 (10)	0.0159 (4)
H8	0.5473	0.0556	0.3075	0.019*
C9	0.30456 (17)	0.3280 (6)	0.32195 (10)	0.0185 (4)
H9	0.2360	0.3451	0.2979	0.022*
C10	0.31373 (16)	0.4595 (5)	0.38676 (10)	0.0168 (4)
H10	0.2503	0.5588	0.4067	0.020*

*Atomic displacement parameters (Å<sup>2</sup>)*

	$U^{11}$	$U^{22}$	$U^{33}$	$U^{12}$	$U^{13}$	$U^{23}$
Cl1	0.0139 (3)	0.0324 (3)	0.0346 (3)	0.0038 (2)	0.0035 (2)	-0.0016 (2)
N1	0.0157 (8)	0.0266 (9)	0.0096 (8)	0.0025 (7)	0.0006 (6)	-0.0028 (7)
N2	0.0154 (8)	0.0179 (8)	0.0124 (8)	0.0017 (6)	0.0004 (6)	0.0011 (6)
N3	0.0190 (9)	0.0222 (9)	0.0134 (8)	-0.0051 (7)	-0.0009 (6)	0.0010 (7)
C1	0.0134 (9)	0.0158 (9)	0.0148 (9)	-0.0009 (7)	-0.0007 (7)	-0.0024 (7)
C2	0.0194 (10)	0.0181 (10)	0.0121 (9)	-0.0008 (8)	-0.0014 (7)	0.0000 (7)
C3	0.0180 (10)	0.0168 (10)	0.0192 (10)	0.0019 (8)	-0.0039 (8)	0.0009 (8)
C4	0.0121 (9)	0.0178 (10)	0.0219 (10)	-0.0001 (7)	0.0004 (7)	-0.0040 (8)
C5	0.0177 (10)	0.0203 (10)	0.0148 (9)	-0.0034 (8)	0.0028 (7)	-0.0018 (8)
C6	0.0155 (9)	0.0166 (9)	0.0142 (9)	-0.0008 (7)	-0.0017 (7)	0.0005 (7)
C7	0.0143 (9)	0.0154 (9)	0.0125 (9)	-0.0014 (7)	0.0003 (7)	0.0020 (7)
C8	0.0164 (10)	0.0186 (10)	0.0129 (9)	-0.0012 (8)	0.0024 (7)	-0.0008 (8)
C9	0.0154 (10)	0.0236 (10)	0.0163 (10)	-0.0025 (8)	-0.0018 (7)	0.0045 (8)
C10	0.0145 (9)	0.0192 (10)	0.0167 (10)	0.0008 (8)	0.0013 (7)	0.0026 (8)

*Geometric parameters (Å, °)*

Cl1—C4	1.743 (2)	C3—C4	1.385 (3)
N1—C7	1.367 (2)	C3—H3	0.9500
N1—C1	1.406 (2)	C4—C5	1.386 (3)
N1—H1	0.881 (10)	C5—C6	1.384 (3)
N2—C10	1.338 (2)	C5—H5	0.9500
N2—C7	1.343 (2)	C6—H6	0.9500
N3—C8	1.323 (3)	C7—C8	1.414 (3)
N3—C9	1.344 (3)	C8—H8	0.9500
C1—C2	1.395 (3)	C9—C10	1.374 (3)
C1—C6	1.398 (3)	C9—H9	0.9500
C2—C3	1.380 (3)	C10—H10	0.9500
C2—H2	0.9500		
C7—N1—C1	128.19 (16)	C6—C5—H5	120.1
C7—N1—H1	114.2 (15)	C4—C5—H5	120.1
C1—N1—H1	117.6 (15)	C5—C6—C1	120.14 (18)
C10—N2—C7	116.74 (16)	C5—C6—H6	119.9

C8—N3—C9	117.11 (17)	C1—C6—H6	119.9
C2—C1—C6	118.89 (18)	N2—C7—N1	115.87 (17)
C2—C1—N1	117.73 (17)	N2—C7—C8	120.33 (17)
C6—C1—N1	123.26 (17)	N1—C7—C8	123.78 (18)
C3—C2—C1	121.21 (18)	N3—C8—C7	121.97 (18)
C3—C2—H2	119.4	N3—C8—H8	119.0
C1—C2—H2	119.4	C7—C8—H8	119.0
C2—C3—C4	118.96 (18)	N3—C9—C10	121.19 (19)
C2—C3—H3	120.5	N3—C9—H9	119.4
C4—C3—H3	120.5	C10—C9—H9	119.4
C3—C4—C5	121.05 (18)	N2—C10—C9	122.63 (18)
C3—C4—C11	119.53 (16)	N2—C10—H10	118.7
C5—C4—C11	119.42 (16)	C9—C10—H10	118.7
C6—C5—C4	119.75 (19)		
C7—N1—C1—C2	-146.4 (2)	N1—C1—C6—C5	176.58 (18)
C7—N1—C1—C6	37.6 (3)	C10—N2—C7—N1	-178.56 (17)
C6—C1—C2—C3	-0.1 (3)	C10—N2—C7—C8	-0.4 (3)
N1—C1—C2—C3	-176.21 (19)	C1—N1—C7—N2	-171.00 (19)
C1—C2—C3—C4	-0.5 (3)	C1—N1—C7—C8	10.9 (3)
C2—C3—C4—C5	0.6 (3)	C9—N3—C8—C7	-0.4 (3)
C2—C3—C4—C11	-179.50 (16)	N2—C7—C8—N3	1.2 (3)
C3—C4—C5—C6	0.0 (3)	N1—C7—C8—N3	179.22 (19)
C11—C4—C5—C6	-179.91 (15)	C8—N3—C9—C10	-1.1 (3)
C4—C5—C6—C1	-0.6 (3)	C7—N2—C10—C9	-1.1 (3)
C2—C1—C6—C5	0.7 (3)	N3—C9—C10—N2	1.9 (3)

Hydrogen-bond geometry ( $\text{\AA}$ ,  $^\circ$ )

$D-H\cdots A$	$D-H$	$H\cdots A$	$D\cdots A$	$D-H\cdots A$
N1—H1 $\cdots$ N2 <sup>i</sup>	0.88 (1)	2.15 (1)	3.023 (2)	171 (2)

Symmetry code: (i)  $-x+1, -y+1, -z+1$ .