

Acta Crystallographica Section E

Structure Reports

Online

ISSN 1600-5368

2-[Bis(5-chloro-2-pyridylamino)methyl]-pyridine monohydrate

Davar M. Boghaei,^{a*} Mohammad Mahdi Najafpour^a and Vickie McKee^b^aDepartment of Chemistry, Sharif University of Technology, PO Box 11155-8639, Tehran, Iran, and ^bDepartment of Chemistry, Loughborough University, Leicestershire LE11 3TU, England

Correspondence e-mail: dboghaei@sharif.edu

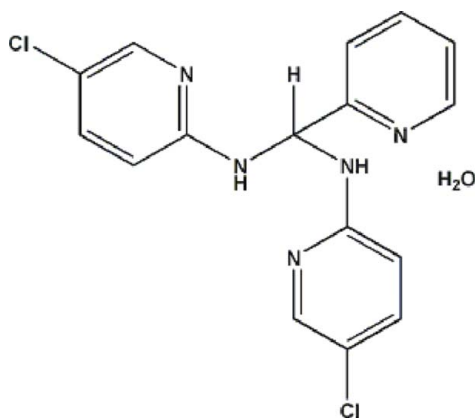
Received 20 October 2008; accepted 3 November 2008

Key indicators: single-crystal X-ray study; $T = 150$ K; mean $\sigma(\text{C}-\text{C}) = 0.003$ Å; R factor = 0.039; wR factor = 0.101; data-to-parameter ratio = 17.4.

In the title compound, the dihedral angles between the 2-amino-5-chloropyridyl rings and the pyridine ring are 56.26 (6°) and 78.83 (5°); the angle between the 2-amino-5-chloropyridyl rings is 72.42 (5°). The solvent water molecules are linked to the organic compound by $\text{N}-\text{H}\cdots\text{O}$, $\text{O}-\text{H}\cdots\text{O}$, $\text{N}-\text{H}\cdots\text{N}$ and $\text{O}-\text{H}\cdots\text{N}$ hydrogen bonds. $\pi\cdots\pi$ Stacking interactions are also observed between the 2-amino-5-chloropyridyl rings (centroid \cdots centroid distance = 3.243 Å).

Related literature

For related crystallographic studies, see: Makowska-Grzyska *et al.* (2003); Li *et al.* (2008); Peori *et al.* (2008).



Experimental

Crystal data

$\text{C}_{16}\text{H}_{13}\text{Cl}_2\text{N}_5\cdot\text{H}_2\text{O}$
 $M_r = 364.23$
 Monoclinic, $C2/c$
 $a = 34.414$ (3) Å
 $b = 4.4337$ (3) Å
 $c = 26.236$ (2) Å
 $\beta = 124.778$ (1°)

$V = 3288.0$ (4) Å³
 $Z = 8$
 Mo $K\alpha$ radiation
 $\mu = 0.41$ mm⁻¹
 $T = 150$ (2) K
 $0.35 \times 0.10 \times 0.05$ mm

Data collection

Bruker APEXII CCD diffractometer
 Absorption correction: multi-scan (SADABS; Sheldrick, 2003)
 $T_{\min} = 0.870$, $T_{\max} = 0.980$

14914 measured reflections
 3778 independent reflections
 2830 reflections with $I > 2\sigma(I)$
 $R_{\text{int}} = 0.042$

Refinement

$R[F^2 > 2\sigma(F^2)] = 0.039$
 $wR(F^2) = 0.101$
 $S = 1.04$
 3778 reflections

217 parameters
 H-atom parameters constrained
 $\Delta\rho_{\text{max}} = 0.34$ e Å⁻³
 $\Delta\rho_{\text{min}} = -0.25$ e Å⁻³

Table 1

Hydrogen-bond geometry (Å, °).

$D-H\cdots A$	$D-H$	$H\cdots A$	$D\cdots A$	$D-H\cdots A$
$\text{N2}-\text{H2N}\cdots\text{N5}^i$	0.87	2.15	2.994 (2)	165
$\text{N4}-\text{H4N}\cdots\text{O1}^{ii}$	0.87	2.18	2.993 (2)	156
$\text{O1}-\text{H1O}\cdots\text{N1}$	0.82	1.98	2.773 (2)	164
$\text{O1}-\text{H2O}\cdots\text{O1}^{iii}$	0.82	1.96	2.758 (2)	163

Symmetry codes: (i) $x, y - 1, z$; (ii) $-x + \frac{1}{2}, y - \frac{1}{2}, -z + \frac{1}{2}$; (iii) $-x + \frac{1}{2}, y + \frac{1}{2}, -z + \frac{1}{2}$.

Data collection: APEX2 (Bruker, 2005); cell refinement: SAINT (Bruker, 2005); data reduction: SAINT; program(s) used to solve structure: SHELXS97 (Sheldrick, 2008); program(s) used to refine structure: SHELXL97 (Sheldrick, 2008); molecular graphics: SHELXTL (Sheldrick, 2008); software used to prepare material for publication: SHELXTL.

We are grateful to the Research Council of Sharif University of Technology, and Loughborough University for their financial support.

Supplementary data and figures for this paper are available from the IUCr electronic archives (Reference: WN2287).

References

- Bruker (2005). APEX2 and SAINT. Bruker AXS Inc., Madison, Wisconsin, USA.
 Li, H., Zhao, H. Y. & Zhang, S. G. (2008). *Acta Cryst.* **E64**, m495.
 Makowska-Grzyska, M. M., Szajna, E., Shipley, C., Arif, A. M., Mitchell, M. H., Halfen, J. A. & Berreau, L. M. (2003). *Inorg. Chem.* **42**, 7472–7488.
 Peori, M. B., Vaughan, K. & Bertolasi, V. (2008). *J. Chem. Crystallogr.* **38**, 61–64.
 Sheldrick, G. M. (2003). SADABS. Bruker AXS Inc., Madison, Wisconsin, USA.
 Sheldrick, G. M. (2008). *Acta Cryst.* **A64**, 112–122.

supporting information

Acta Cryst. (2008). E64, o2428 [doi:10.1107/S1600536808035940]

2-[Bis(5-chloro-2-pyridylamino)methyl]pyridine monohydrate

Davar M. Boghaei, Mohammad Mahdi Najafpour and Vickie McKee

S1. Comment

Primary amines add to imines to form aminal compounds; these are not stable (Peori *et al.*, 2008). The title compound, C₁₆H₁₃Cl₂N₅·H₂O, was synthesized by the reaction of 2-amino-5-chloropyridine with 2-pyridinecarbaldehyde in ethanol. Tris(pyridyl)amines are very common ligands and many complexes containing such ligands have been reported (Makowska-Grzyska *et al.*, 2003; Li *et al.*, 2008).

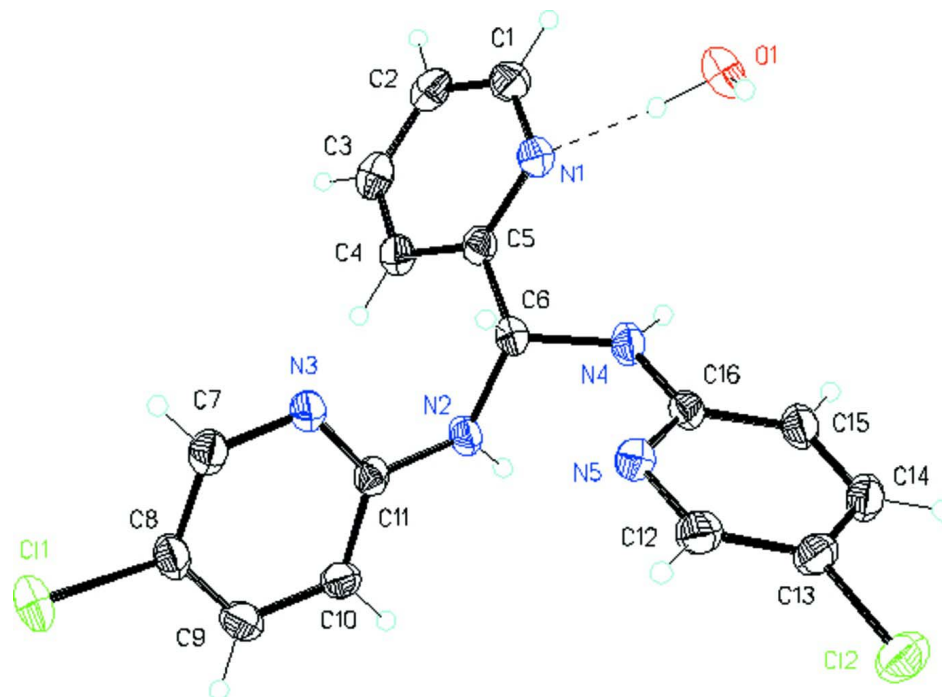
In the title compound, intermolecular N—H···O and N—H···N hydrogen bonds involving amine NH and pyridyl groups form a two dimensional network (Table 1 and Fig. 3). π - π stacking interactions are also observed between the 2-amino-5-chloropyridyl rings [centroid···centroid distance = 3.243 Å]. The dihedral angles between the 2-amino-5-chloropyridyl rings and the pyridine ring are 56.26 (6)° and 78.83 (5)°; the angle between the 2-amino-5-chloropyridyl rings is 72.42 (5)°.

S2. Experimental

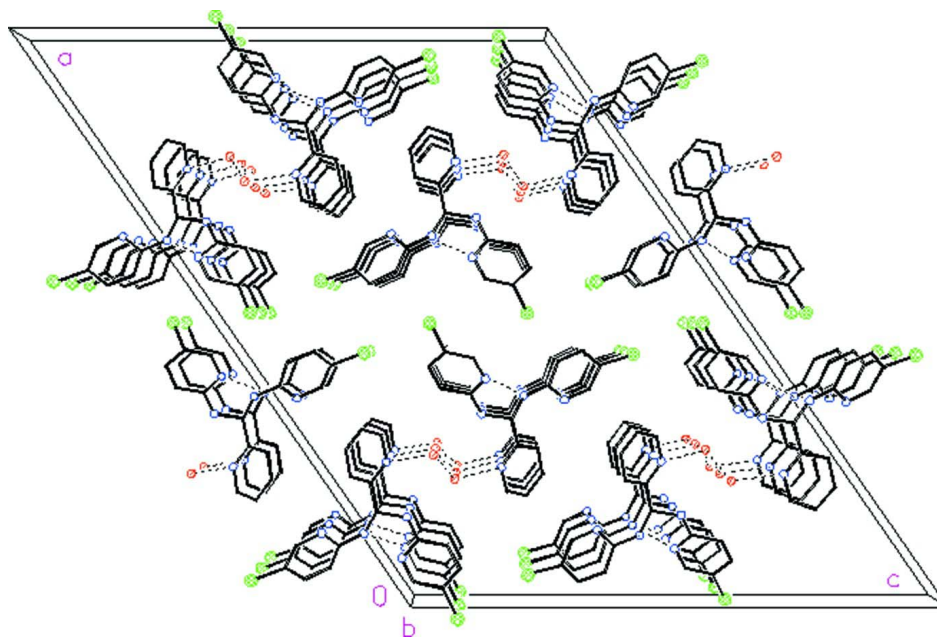
The title compound was synthesized by adding 2-pyridinecarbaldehyde (1 mmol, 107 mg) to a solution of 2-amino-5-chloropyridine (3 mmol, 386 mg) and manganese acetate (0.02 mmol, 4.90 mg) in ethanol (20 ml). The mixture was refluxed with stirring for 7 h. The resultant yellow solution was filtered. Colourless single crystals of the title compound suitable for X-ray structure determination were recrystallized from a mixture of ethanol / water (5/1) by slow evaporation of the solvents at room temperature over several days.

S3. Refinement

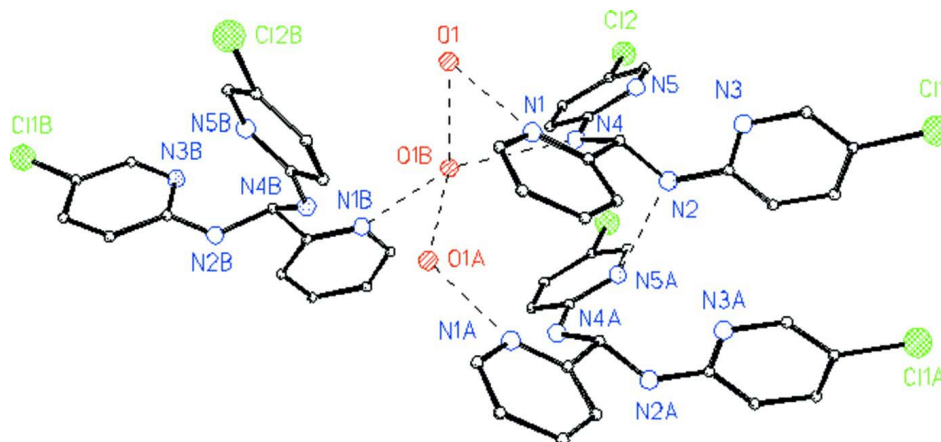
The H atoms bonded to C atoms were positioned geometrically and refined using the riding model with $U_{\text{iso}}(\text{H}) = 1.2U_{\text{eq}}(\text{parent atom})$; C—H = 0.95 and 1.00 Å for aromatic and methine C atoms, respectively. The H atoms bonded to N and O atoms were found in the difference Fourier map and refined with the following *DFIX* restraints: 0.87 (2) Å for N—H and 0.82 (2) Å for O—H. In the final refinement stages the *AFIX3* constraint was used for these H atoms.

**Figure 1**

View of the molecular structure of the title compound, with displacement ellipsoids for non-H atoms drawn at the 50% probability level. The hydrogen atoms are represented by spheres of arbitrary radius. The hydrogen bond is shown as a dashed line.

**Figure 2**

View of the crystal structure packing scheme. The dashed lines indicate hydrogen bonds. H atoms have been omitted.

**Figure 3**

View of the hydrogen bonding (dashed lines) scheme. H atoms have been omitted.

2-[Bis(5-chloro-2-pyridylamino)methyl]pyridine monohydrate

Crystal data

$C_{16}H_{13}Cl_2N_5 \cdot H_2O$

$M_r = 364.23$

Monoclinic, $C2/c$

Hall symbol: $-C 2yc$

$a = 34.414 (3) \text{ \AA}$

$b = 4.4337 (3) \text{ \AA}$

$c = 26.236 (2) \text{ \AA}$

$\beta = 124.778 (1)^\circ$

$V = 3288.0 (4) \text{ \AA}^3$

$Z = 8$

$F(000) = 1504$

$D_x = 1.472 \text{ Mg m}^{-3}$

Mo $K\alpha$ radiation, $\lambda = 0.71073 \text{ \AA}$

Cell parameters from 2781 reflections

$\theta = 2.4\text{--}26.1^\circ$

$\mu = 0.41 \text{ mm}^{-1}$

$T = 150 \text{ K}$

Lath, colourless

$0.35 \times 0.10 \times 0.05 \text{ mm}$

Data collection

Bruker APEXII CCD

diffractometer

Radiation source: fine-focus sealed tube

Graphite monochromator

φ and ω scans

Absorption correction: multi-scan

(*SADABS*; Sheldrick, 2003)

$T_{\min} = 0.870$, $T_{\max} = 0.980$

14914 measured reflections

3778 independent reflections

2830 reflections with $I > 2\sigma(I)$

$R_{\text{int}} = 0.042$

$\theta_{\max} = 27.5^\circ$, $\theta_{\min} = 1.9^\circ$

$h = -44 \rightarrow 44$

$k = -5 \rightarrow 5$

$l = -34 \rightarrow 34$

Refinement

Refinement on F^2

Least-squares matrix: full

$R[F^2 > 2\sigma(F^2)] = 0.039$

$wR(F^2) = 0.101$

$S = 1.04$

3778 reflections

217 parameters

0 restraints

Primary atom site location: structure-invariant
direct methods

Secondary atom site location: difference Fourier
map

Hydrogen site location: inferred from
neighbouring sites

H-atom parameters constrained

$w = 1/[\sigma^2(F_o^2) + (0.0476P)^2 + 1.3212P]$

where $P = (F_o^2 + 2F_c^2)/3$

$(\Delta/\sigma)_{\max} < 0.001$

$\Delta\rho_{\max} = 0.34 \text{ e \AA}^{-3}$

$\Delta\rho_{\min} = -0.25 \text{ e \AA}^{-3}$

Fractional atomic coordinates and isotropic or equivalent isotropic displacement parameters (\AA^2)

	<i>x</i>	<i>y</i>	<i>z</i>	$U_{\text{iso}}^*/U_{\text{eq}}$
N1	0.25729 (5)	0.5318 (4)	0.15040 (7)	0.0272 (3)
C1	0.30054 (7)	0.4226 (5)	0.17347 (9)	0.0308 (4)
H1	0.3259	0.4888	0.2134	0.037*
C2	0.31028 (7)	0.2185 (4)	0.14231 (9)	0.0317 (4)
H2	0.3414	0.1436	0.1606	0.038*
C3	0.27344 (7)	0.1266 (5)	0.08383 (9)	0.0330 (4)
H3	0.2789	-0.0104	0.0607	0.040*
C4	0.22844 (7)	0.2366 (4)	0.05934 (9)	0.0279 (4)
H4	0.2026	0.1759	0.0192	0.033*
C5	0.22143 (6)	0.4366 (4)	0.09407 (8)	0.0232 (4)
C6	0.17286 (6)	0.5693 (4)	0.06964 (8)	0.0235 (4)
H6	0.1720	0.7800	0.0554	0.028*
N2	0.13502 (5)	0.4001 (4)	0.01720 (6)	0.0244 (3)
H2N	0.1224	0.2485	0.0239	0.029*
N3	0.13945 (5)	0.6845 (3)	-0.05317 (7)	0.0254 (3)
C7	0.12129 (7)	0.7555 (4)	-0.11245 (9)	0.0279 (4)
H7	0.1368	0.9051	-0.1206	0.033*
C8	0.08131 (6)	0.6224 (5)	-0.16202 (8)	0.0286 (4)
C11	0.06183 (2)	0.72387 (14)	-0.23748 (2)	0.04370 (16)
C9	0.05738 (6)	0.4096 (5)	-0.15136 (8)	0.0296 (4)
H9	0.0295	0.3165	-0.1850	0.035*
C10	0.07470 (6)	0.3361 (4)	-0.09131 (8)	0.0255 (4)
H10	0.0588	0.1919	-0.0825	0.031*
C11	0.11634 (6)	0.4768 (4)	-0.04267 (8)	0.0224 (4)
N4	0.16586 (5)	0.5834 (4)	0.11881 (7)	0.0273 (4)
H4N	0.1839	0.4738	0.1518	0.033*
N5	0.10283 (5)	0.9191 (4)	0.06534 (7)	0.0267 (3)
C12	0.06679 (6)	1.0659 (4)	0.06110 (9)	0.0288 (4)
H12	0.0479	1.1975	0.0269	0.035*
C13	0.05617 (6)	1.0341 (4)	0.10388 (9)	0.0275 (4)
C12	0.008985 (17)	1.23175 (12)	0.09516 (3)	0.03644 (14)
C14	0.08384 (7)	0.8454 (5)	0.15457 (9)	0.0298 (4)
H14	0.0773	0.8215	0.1849	0.036*
C15	0.12065 (7)	0.6949 (4)	0.16002 (9)	0.0281 (4)
H15	0.1401	0.5650	0.1943	0.034*
C16	0.12928 (6)	0.7355 (4)	0.11388 (8)	0.0238 (4)
O1	0.27352 (5)	0.8741 (3)	0.24925 (6)	0.0359 (3)
H1O	0.2644	0.7974	0.2157	0.043*
H2O	0.2570	1.0234	0.2418	0.043*

Atomic displacement parameters (\AA^2)

	U^{11}	U^{22}	U^{33}	U^{12}	U^{13}	U^{23}
N1	0.0274 (8)	0.0316 (9)	0.0225 (8)	-0.0008 (7)	0.0142 (7)	0.0010 (7)
C1	0.0266 (10)	0.0366 (11)	0.0260 (10)	0.0014 (8)	0.0130 (8)	0.0040 (8)

C2	0.0286 (10)	0.0339 (11)	0.0381 (11)	0.0057 (8)	0.0224 (9)	0.0095 (9)
C3	0.0399 (11)	0.0315 (10)	0.0387 (11)	0.0032 (9)	0.0290 (10)	0.0017 (9)
C4	0.0304 (10)	0.0306 (10)	0.0253 (9)	-0.0008 (8)	0.0174 (8)	-0.0014 (8)
C5	0.0267 (9)	0.0239 (9)	0.0213 (8)	-0.0014 (7)	0.0150 (7)	0.0029 (7)
C6	0.0246 (9)	0.0281 (10)	0.0182 (8)	-0.0004 (7)	0.0125 (7)	-0.0008 (7)
N2	0.0275 (8)	0.0275 (8)	0.0187 (7)	-0.0047 (6)	0.0134 (6)	0.0003 (6)
N3	0.0272 (8)	0.0288 (8)	0.0216 (8)	-0.0025 (6)	0.0146 (7)	-0.0003 (6)
C7	0.0306 (10)	0.0302 (10)	0.0272 (9)	0.0009 (8)	0.0191 (8)	0.0033 (8)
C8	0.0303 (10)	0.0363 (11)	0.0195 (9)	0.0068 (8)	0.0144 (8)	0.0037 (8)
C11	0.0461 (3)	0.0610 (4)	0.0212 (2)	0.0011 (3)	0.0175 (2)	0.0074 (2)
C9	0.0245 (9)	0.0343 (11)	0.0235 (9)	0.0007 (8)	0.0099 (8)	-0.0018 (8)
C10	0.0210 (9)	0.0279 (10)	0.0268 (9)	-0.0003 (7)	0.0133 (8)	0.0004 (8)
C11	0.0235 (9)	0.0237 (9)	0.0222 (9)	0.0028 (7)	0.0144 (7)	-0.0010 (7)
N4	0.0276 (8)	0.0366 (9)	0.0191 (7)	0.0049 (7)	0.0142 (7)	0.0034 (7)
N5	0.0260 (8)	0.0317 (9)	0.0246 (8)	-0.0011 (7)	0.0157 (7)	0.0010 (7)
C12	0.0254 (9)	0.0319 (10)	0.0279 (10)	-0.0020 (8)	0.0145 (8)	0.0012 (8)
C13	0.0241 (9)	0.0293 (10)	0.0331 (10)	-0.0039 (8)	0.0186 (8)	-0.0062 (8)
C12	0.0296 (3)	0.0394 (3)	0.0465 (3)	-0.0015 (2)	0.0254 (2)	-0.0073 (2)
C14	0.0352 (10)	0.0333 (10)	0.0288 (10)	-0.0056 (8)	0.0229 (9)	-0.0045 (8)
C15	0.0320 (10)	0.0318 (10)	0.0222 (9)	-0.0009 (8)	0.0165 (8)	-0.0011 (8)
C16	0.0258 (9)	0.0256 (9)	0.0206 (8)	-0.0045 (7)	0.0137 (7)	-0.0049 (7)
O1	0.0438 (8)	0.0344 (8)	0.0245 (7)	0.0003 (6)	0.0165 (6)	-0.0050 (6)

Geometric parameters (Å, °)

N1—C1	1.337 (2)	C8—C9	1.381 (3)
N1—C5	1.343 (2)	C8—C11	1.7484 (18)
C1—C2	1.383 (3)	C9—C10	1.368 (3)
C1—H1	0.9500	C9—H9	0.9500
C2—C3	1.381 (3)	C10—C11	1.409 (2)
C2—H2	0.9500	C10—H10	0.9500
C3—C4	1.383 (3)	N4—C16	1.368 (2)
C3—H3	0.9500	N4—H4N	0.8698
C4—C5	1.388 (3)	N5—C16	1.338 (2)
C4—H4	0.9500	N5—C12	1.348 (2)
C5—C6	1.526 (2)	C12—C13	1.372 (3)
C6—N4	1.442 (2)	C12—H12	0.9500
C6—N2	1.452 (2)	C13—C14	1.389 (3)
C6—H6	1.0000	C13—C12	1.7418 (19)
N2—C11	1.358 (2)	C14—C15	1.365 (3)
N2—H2N	0.8699	C14—H14	0.9500
N3—C7	1.342 (2)	C15—C16	1.413 (2)
N3—C11	1.344 (2)	C15—H15	0.9500
C7—C8	1.375 (3)	O1—H1O	0.8206
C7—H7	0.9500	O1—H2O	0.8206
C1—N1—C5	118.11 (16)	C9—C8—C11	121.13 (15)
N1—C1—C2	123.50 (18)	C10—C9—C8	118.51 (17)

N1—C1—H1	118.3	C10—C9—H9	120.7
C2—C1—H1	118.3	C8—C9—H9	120.7
C3—C2—C1	118.10 (18)	C9—C10—C11	119.16 (17)
C3—C2—H2	121.0	C9—C10—H10	120.4
C1—C2—H2	121.0	C11—C10—H10	120.4
C2—C3—C4	119.16 (18)	N3—C11—N2	117.63 (15)
C2—C3—H3	120.4	N3—C11—C10	122.19 (16)
C4—C3—H3	120.4	N2—C11—C10	120.16 (16)
C3—C4—C5	119.22 (18)	C16—N4—C6	123.43 (15)
C3—C4—H4	120.4	C16—N4—H4N	117.7
C5—C4—H4	120.4	C6—N4—H4N	118.5
N1—C5—C4	121.90 (16)	C16—N5—C12	117.83 (15)
N1—C5—C6	116.09 (15)	N5—C12—C13	123.00 (18)
C4—C5—C6	121.98 (16)	N5—C12—H12	118.5
N4—C6—N2	110.65 (14)	C13—C12—H12	118.5
N4—C6—C5	110.04 (14)	C12—C13—C14	119.23 (17)
N2—C6—C5	111.98 (15)	C12—C13—Cl2	120.28 (15)
N4—C6—H6	108.0	C14—C13—Cl2	120.48 (14)
N2—C6—H6	108.0	C15—C14—C13	118.88 (17)
C5—C6—H6	108.0	C15—C14—H14	120.6
C11—N2—C6	122.92 (15)	C13—C14—H14	120.6
C11—N2—H2N	117.7	C14—C15—C16	118.96 (18)
C6—N2—H2N	119.3	C14—C15—H15	120.5
C7—N3—C11	117.36 (15)	C16—C15—H15	120.5
N3—C7—C8	123.29 (17)	N5—C16—N4	118.68 (16)
N3—C7—H7	118.4	N5—C16—C15	122.09 (17)
C8—C7—H7	118.4	N4—C16—C15	119.23 (16)
C7—C8—C9	119.47 (17)	H1O—O1—H2O	106.9
C7—C8—Cl1	119.40 (15)		

Hydrogen-bond geometry (Å, °)

<i>D</i> —H... <i>A</i>	<i>D</i> —H	H... <i>A</i>	<i>D</i> ... <i>A</i>	<i>D</i> —H... <i>A</i>
N2—H2N...N5 ⁱ	0.87	2.15	2.994 (2)	165
N4—H4N...O1 ⁱⁱ	0.87	2.18	2.993 (2)	156
O1—H1O...N1	0.82	1.98	2.773 (2)	164
O1—H2O...O1 ⁱⁱⁱ	0.82	1.96	2.758 (2)	163

Symmetry codes: (i) $x, y-1, z$; (ii) $-x+1/2, y-1/2, -z+1/2$; (iii) $-x+1/2, y+1/2, -z+1/2$.