

Acta Crystallographica Section E

## Structure Reports

Online

ISSN 1600-5368

Benzyl *N'*-(1-methyl-1*H*-indol-2-yl-methylene)hydrazinecarbodithioate

Hamid Khaledi, Hapipah Mohd Ali and Seik Weng Ng\*

Department of Chemistry, University of Malaya, 50603 Kuala Lumpur, Malaysia  
Correspondence e-mail: seikweng@um.edu.my

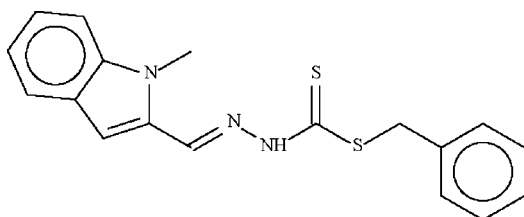
Received 15 November 2008; accepted 19 November 2008

Key indicators: single-crystal X-ray study;  $T = 100$  K; mean  $\sigma(\text{C}-\text{C}) = 0.006$  Å;  
 $R$  factor = 0.075;  $wR$  factor = 0.225; data-to-parameter ratio = 17.9.

In the title compound,  $\text{C}_{18}\text{H}_{17}\text{N}_3\text{S}_2$ , the dihedral angle between the planes of the aromatic ring systems is  $83.63$  ( $16$ )°. In the crystal structure, inversion dimers occur, linked by pairs of  $\text{N}-\text{H}\cdots\text{S}$  hydrogen bonds.

## Related literature

For the crystal structures of the benzyl esters of hydrazinecarbodithioic acids, see: Ali *et al.* (2004); Chan *et al.* (2003); Fun *et al.* (1995); How *et al.* (2007); Khoo *et al.* (2005); Qiu & Luo (2007); Roy *et al.* (2007); Tarafder *et al.* (2002); Xu *et al.* (1991, 2002); Zhang *et al.* (2004).



## Experimental

## Crystal data

$\text{C}_{18}\text{H}_{17}\text{N}_3\text{S}_2$   
 $M_r = 339.47$   
Triclinic,  $P\bar{1}$   
 $a = 5.1203$  (1) Å  
 $b = 11.9377$  (3) Å  
 $c = 14.1936$  (4) Å  
 $\alpha = 108.203$  (2)°  
 $\beta = 90.230$  (2)°

$\gamma = 96.191$  (2)°  
 $V = 818.70$  (3) Å<sup>3</sup>  
 $Z = 2$   
Mo  $K\alpha$  radiation  
 $\mu = 0.33$  mm<sup>-1</sup>  
 $T = 100$  (2) K  
 $0.40 \times 0.08 \times 0.04$  mm

## Data collection

Bruker SMART APEX  
diffractometer  
Absorption correction: multi-scan

(*SADABS*; Sheldrick, 1996)  
 $T_{\min} = 0.880$ ,  $T_{\max} = 0.987$   
7605 measured reflections

3732 independent reflections  
2653 reflections with  $I > 2\sigma(I)$

 $R_{\text{int}} = 0.047$ 

## Refinement

$R[F^2 > 2\sigma(F^2)] = 0.075$   
 $wR(F^2) = 0.225$   
 $S = 1.13$   
3732 reflections

209 parameters  
H-atom parameters constrained  
 $\Delta\rho_{\text{max}} = 1.56$  e Å<sup>-3</sup>  
 $\Delta\rho_{\text{min}} = -0.59$  e Å<sup>-3</sup>

Table 1

Hydrogen-bond geometry (Å, °).

$D-H\cdots A$	$D-H$	$H\cdots A$	$D\cdots A$	$D-H\cdots A$
$\text{N1}-\text{H1}\cdots\text{S2}^i$	0.88	2.49	3.336 (3)	161

Symmetry code: (i)  $-x + 1, -y + 1, -z + 1$ .

Data collection: *APEX2* (Bruker, 2007); cell refinement: *SAINTE* (Bruker, 2007); data reduction: *SAINTE*; program(s) used to solve structure: *SHELXS97* (Sheldrick, 2008); program(s) used to refine structure: *SHELXL97* (Sheldrick, 2008); molecular graphics: *X-SEED* (Barbour, 2001); software used to prepare material for publication: *pubCIF* (Westrip, 2008).

We thank the University of Malaya for funding this study (Science Fund grants 12-02-03-2031, 12-02-03-2051).

Supplementary data and figures for this paper are available from the IUCr electronic archives (Reference: HB2848).

## References

- Ali, M. A., Mirza, A. H., Hamid, M. H. S. A., Bujang, F. H. & Bernhardt, P. V. (2004). *Polyhedron*, **23**, 2405–2412.
- Barbour, L. J. (2001). *J. Supramol. Chem.* **1**, 189–191.
- Bruker (2007). *APEX2* and *SAINTE*. Bruker AXS Inc., Madison, Wisconsin, USA.
- Chan, M.-H. E., Crouse, K. A., Tarafder, M. T. H. & Yamin, B. M. (2003). *Acta Cryst.* **E59**, o628–o629.
- Fun, H.-K., Sivakumar, K., Yip, B.-C., Tian, Y.-P., Duan, C.-Y., Lu, Z.-L. & You, X.-Z. (1995). *Acta Cryst.* **C51**, 2080–2083.
- How, F. N.-F., Watkin, D. J., Crouse, K. A. & Tahir, M. I. M. (2007). *Acta Cryst.* **E63**, o3023–o3024.
- Khoo, T.-J., Cowley, A. R., Watkin, D. J., Crouse, K. A. & Tarafder, M. T. H. (2005). *Acta Cryst.* **E61**, o2441–o2443.
- Qiu, X.-Y. & Luo, Z.-G. (2007). *Acta Cryst.* **E63**, o4339.
- Roy, S., Mandal, T. N., Barik, A., Pal, S., Gupta, S., Hazra, A., Butcher, R. J., Hunter, A. D., Zeller, M. & Kar, S. K. (2007). *Polyhedron*, **26**, 2603–2611.
- Sheldrick, G. M. (1996). *SADABS*. University of Göttingen, Germany.
- Sheldrick, G. M. (2008). *Acta Cryst.* **A64**, 112–122.
- Tarafder, M. T. H., Khoo, T.-J., Crouse, K. A., Yamin, B. M. & Fun, H.-K. (2002). *Polyhedron*, **21**, 2691–2699.
- Westrip, S. P. (2008). *pubCIF*. In preparation.
- Xu, Z., Aleya, E. C., Ferguson, G. & Jennings, M. C. (1991). *Polyhedron*, **10**, 1625–1629.
- Xu, L., Zhou, J.-H., Chen, X.-T. & You, X.-Z. (2002). *Acta Cryst.* **C58**, o513–o514.
- Zhang, M.-L., Tian, Y.-P., Zhang, X.-J., Wu, J.-Y., Zhang, S.-Y., Wang, D., Jiang, M.-H., Chantrapromma, S. & Fun, H.-K. (2004). *Transition Met. Chem.* **29**, 596–602.

## supporting information

*Acta Cryst.* (2008). E64, o2430 [doi:10.1107/S1600536808038579]

**Benzyl *N'*-(1-methyl-1*H*-indol-2-ylmethylene)hydrazinecarbodithioate**

Hamid Khaledi, Hapipah Mohd Ali and Seik Weng Ng

**S1. Comment**

For related structures, see: Ali *et al.* (2004); Chan *et al.* (2003); Fun *et al.* (1995); How *et al.* (2007); Khoo *et al.* (2005); Qiu & Luo (2007); Roy *et al.* (2007); Tarafder *et al.* (2002); Xu *et al.* (1991, 2002); Zhang *et al.* (2004).

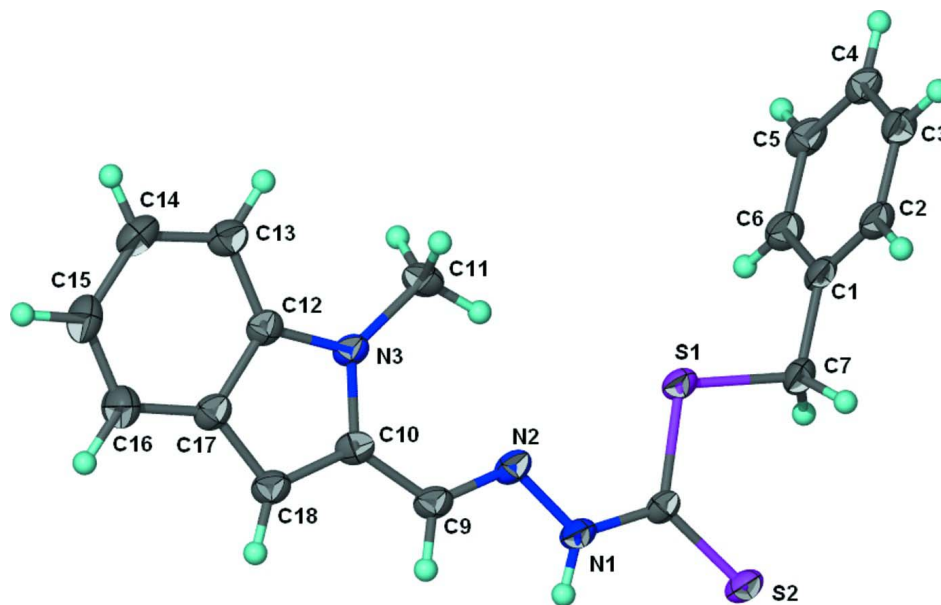
**S2. Experimental**

1-Methylindole-2-carbaldehyde (0.40 g, 2.5 mmol) and *S*-benzylthiocarbamate (0.50 g, 2.5 mmol) were heated in ethanol (40 ml) for 3 h. The solid that separated on cooling the solution was collected and recrystallized from ethanol and washed with cold ethanol and dried. Orange prisms of (I) were grown by slow evaporation of ethanol solution at room temperature.

**S3. Refinement**

Hydrogen atoms were placed at calculated positions (C–H = 0.95–0.99, N–H = 0.88 Å) and refined as riding with  $U(\text{H}) = 1.2\text{--}1.5$  times  $U_{\text{eq}}(\text{C}, \text{N})$ .

The largest difference peak is close to S2.



**Figure 1**

The molecular structure of (I) at the 70% probability level. Hydrogen atoms are drawn as spheres of arbitrary radius.

**Benzyl *N'*-(1-methyl-1*H*-indol-2-ylmethylene)hydrazinecarbodithioate***Crystal data*C<sub>18</sub>H<sub>17</sub>N<sub>3</sub>S<sub>2</sub> $M_r = 339.47$ Triclinic,  $P\bar{1}$ 

Hall symbol: -P 1

 $a = 5.1203$  (1) Å $b = 11.9377$  (3) Å $c = 14.1936$  (4) Å $\alpha = 108.203$  (2)° $\beta = 90.230$  (2)° $\gamma = 96.191$  (2)° $V = 818.70$  (3) Å<sup>3</sup> $Z = 2$  $F(000) = 356$  $D_x = 1.377$  Mg m<sup>-3</sup>Mo  $K\alpha$  radiation,  $\lambda = 0.71073$  Å

Cell parameters from 2060 reflections

 $\theta = 2.6$ – $28.1$ ° $\mu = 0.33$  mm<sup>-1</sup> $T = 100$  K

Prism, orange

 $0.40 \times 0.08 \times 0.04$  mm*Data collection*

Bruker SMART APEX

diffractometer

Radiation source: fine-focus sealed tube

Graphite monochromator

 $\omega$  scans

Absorption correction: multi-scan

(SADABS; Sheldrick, 1996)

 $T_{\min} = 0.880$ ,  $T_{\max} = 0.987$ 

7605 measured reflections

3732 independent reflections

2653 reflections with  $I > 2\sigma(I)$  $R_{\text{int}} = 0.047$  $\theta_{\text{max}} = 27.5$ °,  $\theta_{\text{min}} = 1.5$ ° $h = -6 \rightarrow 6$  $k = -15 \rightarrow 15$  $l = -18 \rightarrow 18$ *Refinement*Refinement on  $F^2$ 

Least-squares matrix: full

 $R[F^2 > 2\sigma(F^2)] = 0.075$  $wR(F^2) = 0.225$  $S = 1.13$ 

3732 reflections

209 parameters

0 restraints

Primary atom site location: structure-invariant

direct methods

Secondary atom site location: difference Fourier map

Hydrogen site location: inferred from neighbouring sites

H-atom parameters constrained

 $w = 1/[\sigma^2(F_o^2) + (0.1301P)^2 + 0.2413P]$ where  $P = (F_o^2 + 2F_c^2)/3$  $(\Delta/\sigma)_{\text{max}} = 0.001$  $\Delta\rho_{\text{max}} = 1.56$  e Å<sup>-3</sup> $\Delta\rho_{\text{min}} = -0.59$  e Å<sup>-3</sup>*Fractional atomic coordinates and isotropic or equivalent isotropic displacement parameters (Å<sup>2</sup>)*

	<i>x</i>	<i>y</i>	<i>z</i>	$U_{\text{iso}}^*/U_{\text{eq}}$
S1	0.58962 (17)	0.85808 (8)	0.65532 (7)	0.0205 (3)
S2	0.72855 (18)	0.65218 (8)	0.48348 (7)	0.0221 (3)
N1	0.3474 (6)	0.6436 (3)	0.6054 (2)	0.0201 (7)
H1	0.3089	0.5687	0.5697	0.024*
N2	0.2021 (6)	0.6924 (3)	0.6868 (2)	0.0195 (7)
N3	-0.1582 (6)	0.7565 (3)	0.8569 (2)	0.0184 (7)
C1	0.9083 (7)	1.0499 (3)	0.6464 (3)	0.0215 (8)
C2	1.1083 (7)	1.1026 (3)	0.7164 (3)	0.0220 (8)
H2	1.2181	1.0543	0.7367	0.026*
C3	1.1524 (7)	1.2255 (4)	0.7581 (3)	0.0225 (8)
H3	1.2914	1.2608	0.8062	0.027*
C4	0.9918 (7)	1.2961 (3)	0.7288 (3)	0.0220 (8)

H4	1.0218	1.3801	0.7563	0.026*
C5	0.7885 (8)	1.2441 (4)	0.6596 (3)	0.0245 (8)
H5	0.6772	1.2924	0.6402	0.029*
C6	0.7460 (7)	1.1216 (4)	0.6183 (3)	0.0245 (8)
H6	0.6058	1.0864	0.5707	0.029*
C7	0.8657 (7)	0.9171 (3)	0.5981 (3)	0.0241 (8)
H7A	1.0257	0.8814	0.6075	0.029*
H7B	0.8278	0.8978	0.5260	0.029*
C8	0.5454 (7)	0.7094 (3)	0.5804 (3)	0.0172 (7)
C9	0.0151 (7)	0.6197 (3)	0.7016 (3)	0.0207 (8)
H9	-0.0098	0.5417	0.6557	0.025*
C10	-0.1597 (7)	0.6484 (3)	0.7829 (3)	0.0188 (8)
C11	0.0120 (8)	0.8667 (3)	0.8688 (3)	0.0256 (9)
H11A	0.1053	0.8922	0.9337	0.038*
H11B	-0.0949	0.9284	0.8643	0.038*
H11C	0.1397	0.8536	0.8163	0.038*
C12	-0.3503 (7)	0.7444 (3)	0.9212 (3)	0.0194 (8)
C13	-0.4243 (8)	0.8289 (4)	1.0078 (3)	0.0240 (8)
H13	-0.3371	0.9075	1.0304	0.029*
C14	-0.6278 (8)	0.7930 (4)	1.0584 (3)	0.0268 (9)
H14	-0.6825	0.8482	1.1170	0.032*
C15	-0.7569 (8)	0.6772 (4)	1.0260 (3)	0.0289 (9)
H15	-0.8972	0.6556	1.0628	0.035*
C16	-0.6840 (8)	0.5941 (4)	0.9418 (3)	0.0273 (9)
H16	-0.7720	0.5157	0.9206	0.033*
C17	-0.4769 (7)	0.6274 (3)	0.8878 (3)	0.0206 (8)
C18	-0.3533 (7)	0.5682 (3)	0.8002 (3)	0.0218 (8)
H18	-0.3958	0.4877	0.7605	0.026*

*Atomic displacement parameters (Å<sup>2</sup>)*

	$U^{11}$	$U^{22}$	$U^{33}$	$U^{12}$	$U^{13}$	$U^{23}$
S1	0.0212 (5)	0.0153 (5)	0.0253 (5)	0.0064 (3)	0.0069 (4)	0.0053 (4)
S2	0.0263 (5)	0.0180 (5)	0.0230 (5)	0.0078 (4)	0.0098 (4)	0.0060 (4)
N1	0.0221 (15)	0.0163 (15)	0.0211 (16)	0.0058 (12)	0.0055 (13)	0.0034 (12)
N2	0.0221 (15)	0.0181 (16)	0.0211 (16)	0.0090 (12)	0.0056 (13)	0.0081 (13)
N3	0.0220 (15)	0.0131 (15)	0.0230 (16)	0.0065 (12)	0.0057 (13)	0.0081 (12)
C1	0.0207 (18)	0.0182 (19)	0.027 (2)	0.0074 (14)	0.0118 (15)	0.0076 (15)
C2	0.0193 (18)	0.0203 (19)	0.030 (2)	0.0093 (14)	0.0061 (15)	0.0101 (16)
C3	0.0194 (18)	0.023 (2)	0.025 (2)	0.0051 (14)	0.0031 (15)	0.0075 (16)
C4	0.0253 (19)	0.0205 (19)	0.0228 (19)	0.0067 (15)	0.0096 (15)	0.0090 (15)
C5	0.029 (2)	0.023 (2)	0.028 (2)	0.0122 (16)	0.0087 (17)	0.0129 (16)
C6	0.0219 (19)	0.025 (2)	0.028 (2)	0.0079 (15)	0.0019 (16)	0.0074 (16)
C7	0.0189 (17)	0.021 (2)	0.033 (2)	0.0059 (14)	0.0093 (16)	0.0069 (16)
C8	0.0171 (16)	0.0173 (18)	0.0192 (17)	0.0078 (13)	0.0024 (14)	0.0069 (14)
C9	0.0236 (18)	0.0152 (18)	0.0247 (19)	0.0069 (14)	0.0022 (15)	0.0067 (15)
C10	0.0232 (18)	0.0152 (18)	0.0210 (18)	0.0064 (14)	0.0006 (15)	0.0086 (14)
C11	0.031 (2)	0.0130 (18)	0.033 (2)	0.0006 (15)	0.0061 (17)	0.0077 (16)

C12	0.0201 (17)	0.0182 (18)	0.0227 (19)	0.0066 (14)	0.0018 (15)	0.0089 (15)
C13	0.0257 (19)	0.022 (2)	0.025 (2)	0.0067 (15)	0.0031 (16)	0.0066 (16)
C14	0.028 (2)	0.031 (2)	0.023 (2)	0.0126 (16)	0.0058 (16)	0.0069 (17)
C15	0.0226 (19)	0.037 (2)	0.029 (2)	0.0038 (16)	0.0067 (16)	0.0126 (18)
C16	0.027 (2)	0.027 (2)	0.028 (2)	0.0010 (16)	0.0059 (17)	0.0098 (17)
C17	0.0214 (18)	0.0199 (19)	0.0227 (19)	0.0075 (14)	0.0029 (15)	0.0084 (15)
C18	0.0256 (19)	0.0168 (18)	0.0243 (19)	0.0055 (14)	0.0047 (15)	0.0073 (15)

*Geometric parameters (Å, °)*

S1—C8	1.750 (4)	C6—H6	0.9500
S1—C7	1.818 (4)	C7—H7A	0.9900
S2—C8	1.673 (4)	C7—H7B	0.9900
N1—C8	1.332 (5)	C9—C10	1.442 (5)
N1—N2	1.382 (4)	C9—H9	0.9500
N1—H1	0.8800	C10—C18	1.380 (5)
N2—C9	1.284 (5)	C11—H11A	0.9800
N3—C12	1.371 (5)	C11—H11B	0.9800
N3—C10	1.386 (5)	C11—H11C	0.9800
N3—C11	1.460 (5)	C12—C17	1.409 (5)
C1—C2	1.377 (5)	C12—C13	1.409 (5)
C1—C6	1.395 (5)	C13—C14	1.374 (6)
C1—C7	1.509 (5)	C13—H13	0.9500
C2—C3	1.392 (5)	C14—C15	1.401 (6)
C2—H2	0.9500	C14—H14	0.9500
C3—C4	1.387 (5)	C15—C16	1.377 (6)
C3—H3	0.9500	C15—H15	0.9500
C4—C5	1.380 (6)	C16—C17	1.405 (6)
C4—H4	0.9500	C16—H16	0.9500
C5—C6	1.388 (6)	C17—C18	1.415 (5)
C5—H5	0.9500	C18—H18	0.9500
C8—S1—C7	101.41 (18)	S2—C8—S1	124.0 (2)
C8—N1—N2	120.4 (3)	N2—C9—C10	124.5 (3)
C8—N1—H1	119.8	N2—C9—H9	117.7
N2—N1—H1	119.8	C10—C9—H9	117.7
C9—N2—N1	114.0 (3)	C18—C10—N3	109.2 (3)
C12—N3—C10	107.9 (3)	C18—C10—C9	123.9 (3)
C12—N3—C11	123.7 (3)	N3—C10—C9	126.9 (3)
C10—N3—C11	128.4 (3)	N3—C11—H11A	109.5
C2—C1—C6	118.9 (3)	N3—C11—H11B	109.5
C2—C1—C7	121.4 (3)	H11A—C11—H11B	109.5
C6—C1—C7	119.7 (4)	N3—C11—H11C	109.5
C1—C2—C3	121.1 (3)	H11A—C11—H11C	109.5
C1—C2—H2	119.5	H11B—C11—H11C	109.5
C3—C2—H2	119.5	N3—C12—C17	108.9 (3)
C4—C3—C2	119.5 (4)	N3—C12—C13	129.3 (4)
C4—C3—H3	120.2	C17—C12—C13	121.8 (4)

C2—C3—H3	120.2	C14—C13—C12	117.2 (4)
C5—C4—C3	119.9 (4)	C14—C13—H13	121.4
C5—C4—H4	120.1	C12—C13—H13	121.4
C3—C4—H4	120.1	C13—C14—C15	121.8 (4)
C4—C5—C6	120.2 (4)	C13—C14—H14	119.1
C4—C5—H5	119.9	C15—C14—H14	119.1
C6—C5—H5	119.9	C16—C15—C14	121.2 (4)
C5—C6—C1	120.3 (4)	C16—C15—H15	119.4
C5—C6—H6	119.8	C14—C15—H15	119.4
C1—C6—H6	119.8	C15—C16—C17	118.8 (4)
C1—C7—S1	108.2 (3)	C15—C16—H16	120.6
C1—C7—H7A	110.0	C17—C16—H16	120.6
S1—C7—H7A	110.0	C16—C17—C12	119.3 (4)
C1—C7—H7B	110.0	C16—C17—C18	134.3 (4)
S1—C7—H7B	110.0	C12—C17—C18	106.4 (3)
H7A—C7—H7B	108.4	C10—C18—C17	107.5 (3)
N1—C8—S2	121.5 (3)	C10—C18—H18	126.2
N1—C8—S1	114.4 (3)	C17—C18—H18	126.2
C8—N1—N2—C9	179.1 (3)	N2—C9—C10—C18	-177.4 (4)
C6—C1—C2—C3	-0.9 (6)	N2—C9—C10—N3	0.5 (6)
C7—C1—C2—C3	177.7 (4)	C10—N3—C12—C17	-0.2 (4)
C1—C2—C3—C4	0.2 (6)	C11—N3—C12—C17	179.8 (3)
C2—C3—C4—C5	0.7 (6)	C10—N3—C12—C13	179.8 (4)
C3—C4—C5—C6	-0.8 (6)	C11—N3—C12—C13	-0.2 (6)
C4—C5—C6—C1	0.0 (6)	N3—C12—C13—C14	179.4 (4)
C2—C1—C6—C5	0.8 (6)	C17—C12—C13—C14	-0.6 (6)
C7—C1—C6—C5	-177.8 (4)	C12—C13—C14—C15	0.3 (6)
C2—C1—C7—S1	102.5 (4)	C13—C14—C15—C16	0.2 (7)
C6—C1—C7—S1	-78.9 (4)	C14—C15—C16—C17	-0.3 (6)
C8—S1—C7—C1	172.9 (3)	C15—C16—C17—C12	0.0 (6)
N2—N1—C8—S2	178.8 (2)	C15—C16—C17—C18	-179.5 (4)
N2—N1—C8—S1	-2.4 (4)	N3—C12—C17—C16	-179.5 (3)
C7—S1—C8—N1	-179.1 (3)	C13—C12—C17—C16	0.5 (6)
C7—S1—C8—S2	-0.3 (3)	N3—C12—C17—C18	0.1 (4)
N1—N2—C9—C10	178.4 (3)	C13—C12—C17—C18	-179.9 (3)
C12—N3—C10—C18	0.2 (4)	N3—C10—C18—C17	-0.2 (4)
C11—N3—C10—C18	-179.8 (4)	C9—C10—C18—C17	178.1 (3)
C12—N3—C10—C9	-177.9 (3)	C16—C17—C18—C10	179.5 (4)
C11—N3—C10—C9	2.0 (6)	C12—C17—C18—C10	0.0 (4)

Hydrogen-bond geometry ( $\text{\AA}$ ,  $^\circ$ )

$D-H\cdots A$	$D-H$	$H\cdots A$	$D\cdots A$	$D-H\cdots A$
N1—H1 $\cdots$ S2 <sup>i</sup>	0.88	2.49	3.336 (3)	161

Symmetry code: (i)  $-x+1, -y+1, -z+1$ .