

Acta Crystallographica Section E

## Structure Reports

Online

ISSN 1600-5368

 Bis(2-hydroxyiminomethyl-6-methoxyphenolato- $\kappa^2O^1,N$ )cobalt(II)

Shu Hua Zhang,\* Cheng Min Ge and Chao Feng

Key Laboratory of Non-Ferrous Metal Materials and Processing Technology, Department of Materials and Chemical Engineering, Guilin University of Technology, Ministry of Education, Guilin 541004, People's Republic of China

Correspondence e-mail: zsh720108@163.com

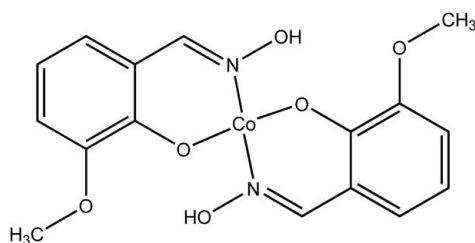
Received 10 November 2008; accepted 24 November 2008

 Key indicators: single-crystal X-ray study;  $T = 293$  K; mean  $\sigma(C-C) = 0.003$  Å;  $R$  factor = 0.025;  $wR$  factor = 0.065; data-to-parameter ratio = 12.2.

In the title compound,  $[Co(C_8H_8NO_3)_2]$ , the  $Co^{II}$  atom lies on a centre of inversion and is coordinated in a slightly distorted square-planar geometry by two N and two O atoms from the 2-hydroxyiminomethyl-6-methoxyphenolate ligands. Intramolecular  $O-H \cdots O$  hydrogen bonds are formed and the complexes form stacks along the  $b$  axis, with an interplanar separation of 3.332 (1) Å between complexes. Pairs of  $C-H \cdots O$  contacts are formed between complexes in neighbouring stacks.

## Related literature

For recent related literature concerning Schiff-base compounds, see: Gupta & Sutar (2008); Sreenivasulu *et al.* (2005); Zhang *et al.* (2008); Raptopoulou *et al.* (2006); Milios *et al.* (2006); Yang *et al.* (2007).



## Experimental

## Crystal data

 $[Co(C_8H_8NO_3)_2]$ 
 $M_r = 391.24$ 

 Monoclinic,  $P2_1/n$   
 $a = 8.4254$  (19) Å  
 $b = 4.9111$  (11) Å  
 $c = 18.951$  (4) Å  
 $\beta = 95.375$  (3)°  
 $V = 780.7$  (3) Å<sup>3</sup>
 $Z = 2$   
 Mo  $K\alpha$  radiation  
 $\mu = 1.14$  mm<sup>-1</sup>  
 $T = 293$  (2) K  
 $0.22 \times 0.18 \times 0.14$  mm

## Data collection

 Bruker SMART CCD diffractometer  
 Absorption correction: none  
 4577 measured reflections

 1433 independent reflections  
 1216 reflections with  $I > 2\sigma(I)$   
 $R_{int} = 0.021$ 

## Refinement

 $R[F^2 > 2\sigma(F^2)] = 0.025$   
 $wR(F^2) = 0.065$   
 $S = 1.04$   
 1433 reflections

 117 parameters  
 H-atom parameters constrained  
 $\Delta\rho_{max} = 0.23$  e Å<sup>-3</sup>  
 $\Delta\rho_{min} = -0.17$  e Å<sup>-3</sup>

Table 1

Hydrogen-bond geometry (Å, °).

| $D-H \cdots A$         | $D-H$ | $H \cdots A$ | $D \cdots A$ | $D-H \cdots A$ |
|------------------------|-------|--------------|--------------|----------------|
| $O2-H2 \cdots O1^i$    | 0.82  | 1.91         | 2.5336 (19)  | 132            |
| $C7-H7 \cdots O2^{ii}$ | 0.93  | 2.48         | 3.321 (2)    | 150            |

 Symmetry codes: (i)  $-x, -y + 1, -z$ ; (ii)  $-x + 1, -y + 1, -z$ .

Data collection: *SMART* (Bruker, 2000); cell refinement: *SAINT* (Bruker, 2000); data reduction: *SAINT*; program(s) used to solve structure: *SHELXS97* (Sheldrick, 2008); program(s) used to refine structure: *SHELXL97* (Sheldrick, 2008); molecular graphics: *SHELXTL* (Sheldrick, 2008); software used to prepare material for publication: *SHELXTL*.

This work is financially supported by the Young Science Foundation of Guangxi Province of China (grant No. 0832085).

Supplementary data and figures for this paper are available from the IUCr electronic archives (Reference: B12324).

## References

- Bruker (2000). *SMART* and *SAINT*. Bruker AXS Inc., Madison, Wisconsin, USA.
- Gupta, K. C. & Sutar, A. K. (2008). *Coord. Chem. Rev.* **252**, 1420–1450.
- Milios, C. J., Vinslava, A., Whittaker, A. G., Parsons, S., Wernsdorfer, W., Christou, G., Perlepes, S. P. & Brechin, E. K. (2006). *Inorg. Chem.* **45**, 5272–5274.
- Raptopoulou, C. P., Boudalis, A. K., Sanakis, Y., Psycharis, V., Clemente-Juan, J. M., Fardis, M., Diamantopoulos, G. & Papavassiliou, G. (2006). *Inorg. Chem.* **45**, 2317–2326.
- Sheldrick, G. M. (2008). *Acta Cryst.* **A64**, 112–122.
- Sreenivasulu, B., Vetrichelvan, M., Zhao, F., Gao, S. & Vittal, J. J. (2005). *Eur. J. Inorg. Chem.* pp. 4635–4645.
- Yang, C. I., Wernsdorfer, W., Lee, G. H. & Tsai, H. L. (2007). *J. Am. Chem. Soc.* **129**, 456–457.
- Zhang, S. H., Jiang, Y. M. & Liu, Z. M. (2008). *J. Coord. Chem.* **61**, 1927–1934.

## supporting information

*Acta Cryst.* (2008). E64, m1627 [doi:10.1107/S1600536808039512]

**Bis(2-hydroxyiminomethyl-6-methoxyphenolato- $\kappa^2O^1,N$ )cobalt(II)**

**Shu Hua Zhang, Cheng Min Ge and Chao Feng**

**S1. Comment**

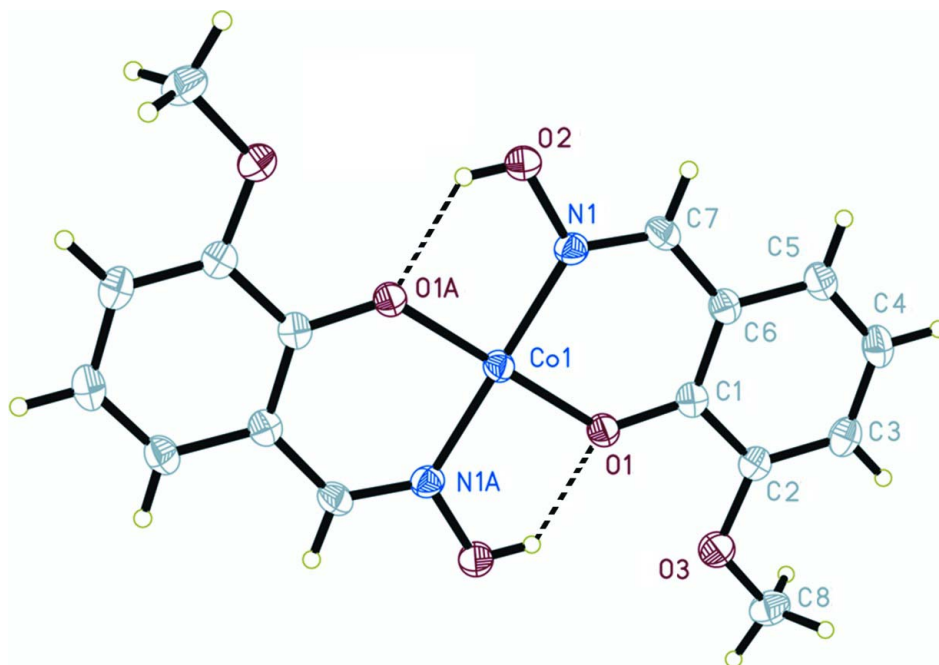
Schiff-base complexes have been studied for many years (Gupta & Sutar, 2008; Sreenivasulu *et al.*, 2005; Zhang *et al.*, 2008) and have aroused increasing interest because of their antiviral, anticancer, catalytic and fluorescent properties. Most model studies of metal complexes of Schiff-base ligands containing salicylaldehyde derivatives and oxime have focused on the binding mode of the ligands (Raptopoulou *et al.*, 2006; Milios *et al.*, 2006; Yang *et al.*, 2007). The crystal structures of the complexes demonstrate that the Schiff-base ligands act in a bidentate, tridentate or  $\mu^5\text{:}\eta^1\text{:}\eta^1\text{:}\eta^3$  mode, coordinating through the phenolato O, imine N, or oxime O atoms. Our research group is interested in the Schiff-base derived from 2-hydroxy-3-methoxy-benzaldehyde and hydroxylammonium chloride.

**S2. Experimental**

A solution of (0.152 g, 1.0 mmol) 2-hydroxy-3-methoxy-benzaldehyde oxime and (0.056 g, 1 mmol) potassium hydroxide in 20 ml absolute methanol was added slowly to a solution of  $\text{CoNO}_3 \cdot 6\text{H}_2\text{O}$  (0.145 g, 0.5 mmol) in methanol. The mixture was stirred for 1 h at room temperature to give a red solution which was filtered and the filtrate was left to stand at room temperature. Red block crystals suitable for were obtained by slow evaporation Yield: 80.1 % (based on Co). Elemental analysis calculated: C 49.12, H 4.12, N 7.16 %; found: C 48.99, H 4.21, N 7.22 %.

**S3. Refinement**

H atoms were positioned geometrically and refined with a riding model, with distances 0.96 ( $\text{CH}_3$ ) or 0.93 Å (aromatic ring), and with  $U_{\text{iso}}(\text{H}) = 1.2 U_{\text{eq}}(\text{aromatic ring})$  or  $U_{\text{iso}}(\text{H}) = 1.5 U_{\text{eq}}(\text{CH}_3)$ , and with O–H distance 0.82 Å and  $U_{\text{iso}}(\text{H}) = 1.5 U_{\text{eq}}(\text{O})$ .

**Figure 1**

Molecular structure of the title compound, showing 30% probability displacement ellipsoids for non-H atoms. Dashed lines denote O—H···O hydrogen bonds. Symmetry code (A):  $-x, 1 - y, -z$ .

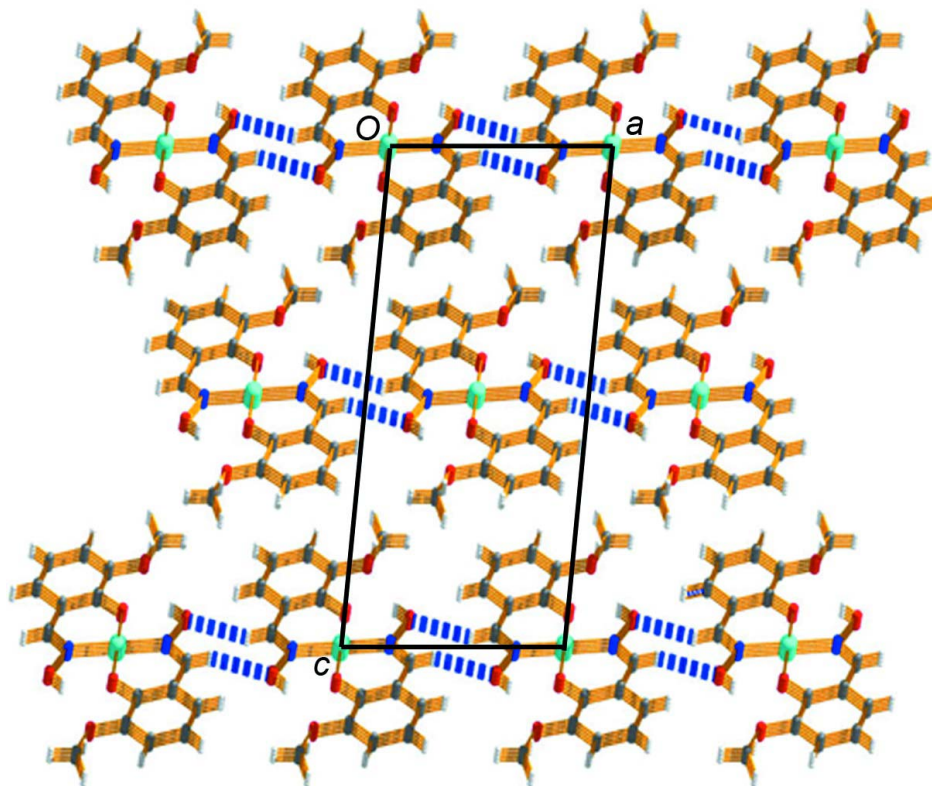


Figure 2

Packing diagram viewed down the  $b$  axis. Dashed lines denote C—H $\cdots$ O contacts.

### Bis(2-hydroxyiminomethyl-6-methoxyphenolato- $\kappa^2O^1,N$ )cobalt(II)

#### Crystal data

[Co(C<sub>8</sub>H<sub>8</sub>NO<sub>3</sub>)<sub>2</sub>]

$M_r = 391.24$

Monoclinic,  $P2_1/n$

Hall symbol: -P 2yn

$a = 8.4254$  (19) Å

$b = 4.9111$  (11) Å

$c = 18.951$  (4) Å

$\beta = 95.375$  (3)°

$V = 780.7$  (3) Å<sup>3</sup>

$Z = 2$

$F(000) = 402$

$D_x = 1.664$  Mg m<sup>-3</sup>

Mo  $K\alpha$  radiation,  $\lambda = 0.71073$  Å

Cell parameters from 4577 reflections

$\theta = 2.6$ – $25.5$ °

$\mu = 1.14$  mm<sup>-1</sup>

$T = 293$  K

Block, red

$0.22 \times 0.18 \times 0.14$  mm

#### Data collection

Bruker SMART CCD  
diffractometer

Radiation source: fine-focus sealed tube

Graphite monochromator

$\varphi$  and  $\omega$  scans

4577 measured reflections

1433 independent reflections

1216 reflections with  $I > 2\sigma(I)$

$R_{int} = 0.021$

$\theta_{max} = 25.5$ °,  $\theta_{min} = 2.6$ °

$h = -10 \rightarrow 10$

$k = -5 \rightarrow 5$

$l = -22 \rightarrow 22$

#### Refinement

Refinement on  $F^2$

Least-squares matrix: full

$R[F^2 > 2\sigma(F^2)] = 0.025$

$wR(F^2) = 0.065$

$S = 1.04$

1433 reflections

117 parameters

0 restraints

Primary atom site location: structure-invariant  
direct methods

Secondary atom site location: difference Fourier  
map

Hydrogen site location: inferred from  
neighbouring sites

H-atom parameters constrained

$w = 1/[\sigma^2(F_o^2) + (0.0303P)^2 + 0.2885P]$

where  $P = (F_o^2 + 2F_c^2)/3$

$(\Delta/\sigma)_{max} < 0.001$

$\Delta\rho_{max} = 0.23$  e Å<sup>-3</sup>

$\Delta\rho_{min} = -0.17$  e Å<sup>-3</sup>

#### Special details

**Geometry.** All esds (except the esd in the dihedral angle between two l.s. planes) are estimated using the full covariance matrix. The cell esds are taken into account individually in the estimation of esds in distances, angles and torsion angles; correlations between esds in cell parameters are only used when they are defined by crystal symmetry. An approximate (isotropic) treatment of cell esds is used for estimating esds involving l.s. planes.

**Refinement.** Refinement of  $F^2$  against ALL reflections. The weighted R-factor  $wR$  and goodness of fit  $S$  are based on  $F^2$ , conventional R-factors  $R$  are based on  $F$ , with  $F$  set to zero for negative  $F^2$ . The threshold expression of  $F^2 > 2\sigma(F^2)$  is used only for calculating R-factors(gt) etc. and is not relevant to the choice of reflections for refinement. R-factors based on  $F^2$  are statistically about twice as large as those based on  $F$ , and R-factors based on ALL data will be even larger.

#### Fractional atomic coordinates and isotropic or equivalent isotropic displacement parameters (Å<sup>2</sup>)

|     | $x$        | $y$        | $z$          | $U_{iso}^*/U_{eq}$ |
|-----|------------|------------|--------------|--------------------|
| Co1 | 0.0000     | 0.5000     | 0.0000       | 0.03262 (15)       |
| C1  | 0.1093 (2) | 0.0793 (4) | 0.09770 (10) | 0.0353 (4)         |

|     |               |             |              |            |
|-----|---------------|-------------|--------------|------------|
| C2  | 0.0701 (2)    | -0.1107 (4) | 0.14960 (10) | 0.0377 (5) |
| C3  | 0.1851 (3)    | -0.2781 (4) | 0.18262 (11) | 0.0448 (5) |
| H3  | 0.1581        | -0.4028     | 0.2164       | 0.054*     |
| C4  | 0.3423 (3)    | -0.2610 (4) | 0.16538 (11) | 0.0477 (6) |
| H4  | 0.4196        | -0.3744     | 0.1880       | 0.057*     |
| C5  | 0.3837 (3)    | -0.0794 (4) | 0.11564 (11) | 0.0429 (5) |
| H5  | 0.4889        | -0.0696     | 0.1048       | 0.052*     |
| C6  | 0.2676 (2)    | 0.0939 (4)  | 0.08055 (10) | 0.0361 (4) |
| C7  | 0.3153 (2)    | 0.2796 (4)  | 0.02809 (10) | 0.0386 (5) |
| H7  | 0.4217        | 0.2799      | 0.0187       | 0.046*     |
| C8  | -0.1391 (3)   | -0.3153 (5) | 0.20761 (12) | 0.0535 (6) |
| H8A | -0.1090       | -0.4897     | 0.1902       | 0.080*     |
| H8B | -0.2529       | -0.3074     | 0.2077       | 0.080*     |
| H8C | -0.0903       | -0.2898     | 0.2550       | 0.080*     |
| N1  | 0.21926 (19)  | 0.4465 (3)  | -0.00691 (8) | 0.0363 (4) |
| O1  | -0.00708 (15) | 0.2354 (3)  | 0.06754 (7)  | 0.0387 (3) |
| O2  | 0.29495 (16)  | 0.6086 (3)  | -0.05443 (8) | 0.0487 (4) |
| H2  | 0.2301        | 0.7143      | -0.0744      | 0.073*     |
| O3  | -0.08737 (17) | -0.1063 (3) | 0.16291 (8)  | 0.0494 (4) |

*Atomic displacement parameters (Å<sup>2</sup>)*

|     | $U^{11}$    | $U^{22}$    | $U^{33}$    | $U^{12}$      | $U^{13}$     | $U^{23}$     |
|-----|-------------|-------------|-------------|---------------|--------------|--------------|
| Co1 | 0.0291 (2)  | 0.0337 (2)  | 0.0348 (2)  | -0.00160 (15) | 0.00146 (15) | 0.00203 (16) |
| C1  | 0.0385 (11) | 0.0311 (10) | 0.0354 (11) | 0.0001 (8)    | -0.0005 (9)  | -0.0038 (8)  |
| C2  | 0.0415 (11) | 0.0352 (10) | 0.0362 (11) | -0.0016 (9)   | 0.0025 (9)   | -0.0015 (9)  |
| C3  | 0.0566 (14) | 0.0375 (11) | 0.0392 (11) | -0.0009 (10)  | -0.0007 (10) | 0.0040 (9)   |
| C4  | 0.0503 (13) | 0.0425 (12) | 0.0478 (13) | 0.0103 (10)   | -0.0080 (10) | -0.0001 (10) |
| C5  | 0.0384 (11) | 0.0455 (12) | 0.0436 (12) | 0.0057 (9)    | -0.0030 (9)  | -0.0045 (10) |
| C6  | 0.0360 (10) | 0.0350 (10) | 0.0364 (11) | -0.0010 (8)   | -0.0017 (8)  | -0.0043 (8)  |
| C7  | 0.0286 (10) | 0.0438 (11) | 0.0429 (11) | 0.0001 (9)    | 0.0016 (8)   | -0.0041 (9)  |
| C8  | 0.0591 (14) | 0.0510 (14) | 0.0524 (13) | -0.0079 (11)  | 0.0160 (11)  | 0.0078 (11)  |
| N1  | 0.0327 (9)  | 0.0410 (10) | 0.0352 (9)  | -0.0053 (7)   | 0.0040 (7)   | 0.0019 (7)   |
| O1  | 0.0332 (7)  | 0.0397 (8)  | 0.0434 (8)  | 0.0005 (6)    | 0.0044 (6)   | 0.0083 (6)   |
| O2  | 0.0346 (8)  | 0.0598 (10) | 0.0523 (9)  | -0.0032 (7)   | 0.0070 (7)   | 0.0185 (8)   |
| O3  | 0.0452 (9)  | 0.0493 (8)  | 0.0547 (9)  | -0.0010 (7)   | 0.0105 (7)   | 0.0153 (8)   |

*Geometric parameters (Å, °)*

|                     |             |        |           |
|---------------------|-------------|--------|-----------|
| Co1—O1              | 1.8290 (13) | C4—H4  | 0.930     |
| Co1—O1 <sup>i</sup> | 1.8290 (13) | C5—C6  | 1.414 (3) |
| Co1—N1              | 1.8826 (17) | C5—H5  | 0.930     |
| Co1—N1 <sup>i</sup> | 1.8826 (17) | C6—C7  | 1.434 (3) |
| C1—O1               | 1.331 (2)   | C7—N1  | 1.290 (2) |
| C1—C6               | 1.404 (3)   | C7—H7  | 0.930     |
| C1—C2               | 1.417 (3)   | C8—O3  | 1.425 (2) |
| C2—O3               | 1.374 (2)   | C8—H8A | 0.960     |
| C2—C3               | 1.376 (3)   | C8—H8B | 0.960     |

|                                      |             |            |             |
|--------------------------------------|-------------|------------|-------------|
| C3—C4                                | 1.396 (3)   | C8—H8C     | 0.960       |
| C3—H3                                | 0.930       | N1—O2      | 1.400 (2)   |
| C4—C5                                | 1.367 (3)   | O2—H2      | 0.820       |
| O1—Co1—O1 <sup>i</sup>               | 180.00 (8)  | C6—C5—H5   | 119.8       |
| O1—Co1—N1                            | 92.64 (6)   | C1—C6—C5   | 119.37 (19) |
| O1 <sup>i</sup> —Co1—N1              | 87.36 (6)   | C1—C6—C7   | 121.78 (18) |
| O1—Co1—N1 <sup>i</sup>               | 87.36 (6)   | C5—C6—C7   | 118.86 (18) |
| O1 <sup>i</sup> —Co1—N1 <sup>i</sup> | 92.64 (6)   | N1—C7—C6   | 123.89 (18) |
| N1—Co1—N1 <sup>i</sup>               | 180.00 (13) | N1—C7—H7   | 118.1       |
| O1—C1—C6                             | 123.29 (18) | C6—C7—H7   | 118.1       |
| O1—C1—C2                             | 117.87 (18) | O3—C8—H8A  | 109.5       |
| C6—C1—C2                             | 118.84 (17) | O3—C8—H8B  | 109.5       |
| O3—C2—C3                             | 125.24 (19) | H8A—C8—H8B | 109.5       |
| O3—C2—C1                             | 114.13 (17) | O3—C8—H8C  | 109.5       |
| C3—C2—C1                             | 120.62 (19) | H8A—C8—H8C | 109.5       |
| C2—C3—C4                             | 120.0 (2)   | H8B—C8—H8C | 109.5       |
| C2—C3—H3                             | 120.0       | C7—N1—O2   | 112.97 (16) |
| C4—C3—H3                             | 120.0       | C7—N1—Co1  | 128.68 (14) |
| C5—C4—C3                             | 120.65 (19) | O2—N1—Co1  | 118.33 (12) |
| C5—C4—H4                             | 119.7       | C1—O1—Co1  | 129.71 (13) |
| C3—C4—H4                             | 119.7       | N1—O2—H2   | 109.5       |
| C4—C5—C6                             | 120.5 (2)   | C2—O3—C8   | 116.90 (17) |
| C4—C5—H5                             | 119.8       |            |             |

Symmetry code: (i)  $-x, -y+1, -z$ .

*Hydrogen-bond geometry (Å, °)*

| <i>D</i> —H $\cdots$ <i>A</i>   | <i>D</i> —H | H $\cdots$ <i>A</i> | <i>D</i> $\cdots$ <i>A</i> | <i>D</i> —H $\cdots$ <i>A</i> |
|---------------------------------|-------------|---------------------|----------------------------|-------------------------------|
| O2—H2 $\cdots$ O1 <sup>i</sup>  | 0.82        | 1.91                | 2.5336 (19)                | 132                           |
| C7—H7 $\cdots$ O2 <sup>ii</sup> | 0.93        | 2.48                | 3.321 (2)                  | 150                           |

Symmetry codes: (i)  $-x, -y+1, -z$ ; (ii)  $-x+1, -y+1, -z$ .