

Poly[[aquatri- μ_3 -hydroxido-(μ_4 -2-phosphonatoethanesulfonato)dierbium(III)] monohydrate]

Andreas Sonnauer and Norbert Stock*

Institute of Inorganic Chemistry, Christian-Albrechts-University, Max-Eyth-Strasse 2, D 24118 Kiel, Germany

Correspondence e-mail: stock@ac.uni-kiel.de

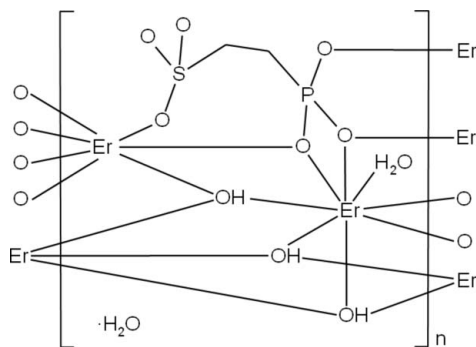
Received 29 September 2008; accepted 13 October 2008

 Key indicators: single-crystal X-ray study; $T = 293$ K; mean $\sigma(\text{C}-\text{C}) = 0.012$ Å; H-atom completeness 37%; R factor = 0.031; wR factor = 0.082; data-to-parameter ratio = 17.2.

The crystal structure of the title compound, $\{[\text{Er}_2(\text{C}_2\text{H}_4\text{O}_6\text{PS})(\text{OH})_3(\text{H}_2\text{O})]\cdot\text{H}_2\text{O}\}_n$, consists of two Er^{3+} ions, one $(\text{C}_2\text{H}_4\text{O}_6\text{PS})^{3-}$ ion, three OH^- ions, and two water molecule. The Er^{3+} ions form ErO_8 polyhedra., which are connected by μ - and μ_3 -O atoms. Thus, inorganic Er–O–Er layers of edge- and face-sharing polyhedra are observed. Whereas most often in metal phosphonosulfonates the organic linker bridges adjacent layers, in the title compound, the $(\text{O}_3\text{PC}_2\text{H}_4\text{SO}_3)^{3-}$ anion is only connected to one Er–O–Er layer. Short interatomic O...O distances [2.898 (8), 2.997 (14) and 2.768 (10) Å] indicate hydrogen bonding between the layers. The noncoordinated water molecules are located between the layers.

Related literature

For related structures, see: Sonnauer *et al.* (2007); Sonnauer & Stock (2008*a,b*); Benedetto *et al.* (1997); Adani *et al.* (1998); Du *et al.* (2006*a,b*); Du, Li *et al.* (2007); Du, Prosvirin & Mao (2007); Du, Xu *et al.* (2007).



Experimental

Crystal data

| | |
|--|-----------------------------------|
| $[\text{Er}_2(\text{C}_2\text{H}_4\text{O}_6\text{PS})(\text{OH})_3(\text{H}_2\text{O})]\cdot\text{H}_2\text{O}$ | $\gamma = 101.885$ (11) $^\circ$ |
| $M_r = 608.65$ | $V = 558.81$ (10) Å 3 |
| Triclinic, $P\bar{1}$ | $Z = 2$ |
| $a = 5.8621$ (6) Å | Mo $K\alpha$ radiation |
| $b = 9.0443$ (9) Å | $\mu = 15.29$ mm $^{-1}$ |
| $c = 11.6240$ (11) Å | $T = 293$ (2) K |
| $\alpha = 105.543$ (12) $^\circ$ | $0.08 \times 0.07 \times 0.06$ mm |
| $\beta = 101.713$ (11) $^\circ$ | |

Data collection

| | |
|---|--|
| Stoe IPDS-1 diffractometer | 4731 measured reflections |
| Absorption correction: ψ scan | 2664 independent reflections |
| (<i>X-RED</i> and <i>X-SHAPE</i> ; Stoe & Cie, 1999) | 2207 reflections with $I > 2\sigma(I)$ |
| $T_{\min} = 0.293$, $T_{\max} = 0.399$ | $R_{\text{int}} = 0.041$ |

Refinement

| | |
|---------------------------------|---|
| $R[F^2 > 2\sigma(F^2)] = 0.031$ | 155 parameters |
| $wR(F^2) = 0.082$ | H-atom parameters constrained |
| $S = 0.97$ | $\Delta\rho_{\max} = 1.61$ e Å $^{-3}$ |
| 2664 reflections | $\Delta\rho_{\min} = -2.07$ e Å $^{-3}$ |

Data collection: *IPDS Program Package* (Stoe & Cie, 1998); cell refinement: *IPDS Program Package*; data reduction: *IPDS Program Package*; program(s) used to solve structure: *SHELXS97* (Sheldrick, 2008); program(s) used to refine structure: *SHELXL97* (Sheldrick, 2008); molecular graphics: *DIAMOND* (Brandenburg & Putz, 1999); software used to prepare material for publication: *publCIF* (Westrip, 2008).

The authors thank PD Dr Christian Näther for the acquisition of the single-crystal data. This work was supported by the DFG-Project STO 643/2-2.

Supplementary data and figures for this paper are available from the IUCr electronic archives (Reference: BT2804).

References

- Adani, F., Casciola, M., Jones, D. J., Massinelli, L., Montoneri, E., Rozière, J. & Vivani, R. (1998). *J. Mater. Chem.* **8**, 961–964.
- Benedetto, A. F., Squattrito, P. J., Adani, F. & Montoneri, E. (1997). *Inorg. Chim. Acta*, **260**, 207–216.
- Brandenburg, K. & Putz, H. (1999). *DIAMOND*. Crystal Impact GbR, Bonn, Germany.
- Du, Z.-Y., Li, X.-L., Liu, Q.-Y. & Mao, J.-G. (2007). *Cryst. Growth Des.* **7**, 1501–1507.
- Du, Z.-Y., Prosvirin, V. A. & Mao, J.-G. (2007). *Inorg. Chem.* **46**, 9884–9894.
- Du, Z.-Y., Xu, H.-B., Li, X.-L. & Mao, J.-G. (2007). *Eur. J. Inorg. Chem.* pp. 4520–4529.
- Du, Z.-Y., Xu, H.-B. & Mao, J.-G. (2006*a*). *Inorg. Chem.* **45**, 6424–6430.
- Du, Z.-Y., Xu, H.-B. & Mao, J.-G. (2006*b*). *Inorg. Chem.* **45**, 9780–9788.
- Sheldrick, G. M. (2008). *Acta Cryst.* **A64**, 112–122.
- Sonnauer, A., Näther, C., Höpfe, H. A., Senker, J. & Stock, N. (2007). *Inorg. Chem.* **46**, 9968–9974.
- Sonnauer, A. & Stock, N. (2008*a*). *Eur. J. Inorg. Chem.* doi:10.1002/ejic.200800315.
- Sonnauer, A. & Stock, N. (2008*b*). *J. Solid State Chem.* **181**, 473–479.
- Stoe & Cie (1998). *IPDS Program Package*. Stoe & Cie, Darmstadt, Germany.
- Stoe & Cie (1999). *X-RED* and *X-SHAPE*. Stoe & Cie, Darmstadt, Germany.
- Westrip, S. P. (2008). *publCIF*. In preparation.

supporting information

Acta Cryst. (2008). E64, m1433 [doi:10.1107/S160053680803230]

Poly[[aquatri- μ_3 -hydroxido-(μ_4 -2-phosphonatoethanesulfonato)dierbium(III)] monohydrate]

Andreas Sonnauer and Norbert Stock

S1. Comment

Inorganic–organic hybrid materials based on metal carboxylates, sulfonates and phosphonates are intensively investigated due to their potential application *i.e.* in the field of gas separation, storage, as well as catalysis, or as sensor materials. We are interested in the use of organic ligands containing two or more different functional groups for the synthesis of functionalized hybrid compounds. Although a large number of metal phosphonates and metal sulfonates have been reported in the literature, compounds based on ligands containing simultaneously a phosphonic as well as a sulfonic acid group have only recently been investigated. These few studies are limited to the use of linker molecules based on rigid phosphonoarylsulfonic acids (Benedetto *et al.*, 1997; Adani *et al.*, 1998; Du *et al.*, 2006*a,b*; Du, Li *et al.*, 2007; Du, Prosvirin & Mao, 2007; Du, Xu *et al.*, 2007). Our group has started a systematic investigation using the flexible linker 2-phosphonoethansulfonic acid, which has been recently reported in the literature (Sonnauer *et al.*, 2007; Sonnauer & Stock, 2008*a,b*). Here we describe the crystal structure of the new rare earth phosphonosulfonate $[\text{Er}_2(\text{O}_3\text{PC}_2\text{H}_4\text{SO}_3)(\text{OH})_3(\text{H}_2\text{O})]\text{H}_2\text{O}$, which was obtained during a high-throughput screening experiment.

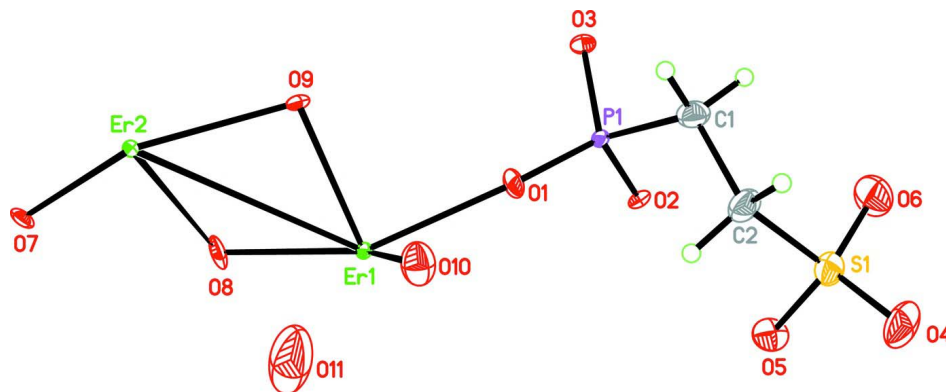
The title compound consists of two crystallographic independent erbium ions, one fully deprotonated $(\text{O}_3\text{PC}_2\text{H}_4\text{SO}_3)^{3-}$ anion, three hydroxide ions, as well as two water molecules (one is coordinated to a erbium ion) (Fig. 1). The erbium ions are coordinated eightfold by oxygen atoms and form ErO_8 polyhedra (Fig. 2), which are linked (edge- and face-sharing) to inorganic layers $\text{Er}-\text{O}-\text{Er}$ in the *ab*-plane (Fig. 3). While most often in metal phosphonosulfonates the organic linker bridges adjacent layers, in $[\text{Er}_2(\text{O}_3\text{PC}_2\text{H}_4\text{SO}_3)(\text{OH})_3(\text{H}_2\text{O})]\text{H}_2\text{O}$ the anion $(\text{O}_3\text{PC}_2\text{H}_4\text{SO}_3)^{3-}$ is only connected to one $\text{Er}-\text{O}-\text{Er}$ layer. These layers are further linked *via* hydrogen bonds into a three-dimensional structure (Fig. 4). The non-coordinating H_2O molecules are located in between the layers.

S2. Experimental

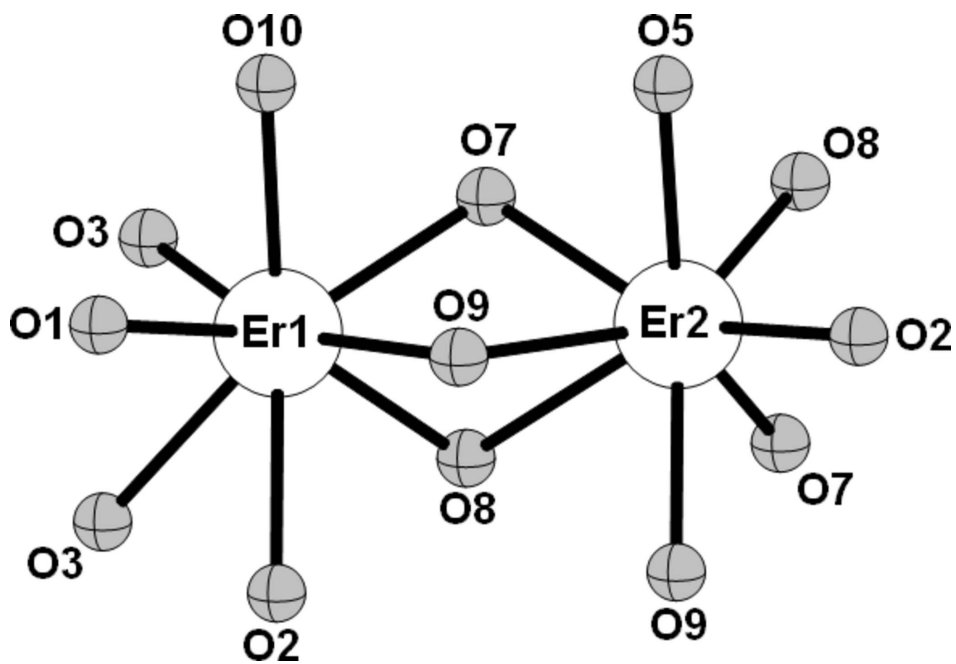
$\text{H}_2\text{O}_3\text{PC}_2\text{H}_4\text{SO}_3\text{H}$ was synthesized as previously reported (Sonnauer & Stock, 2008*b*). All other reagents were of analytical grade (Aldrich and Fluka) and were used without further purification. For the synthesis a special high-throughput reactor system was used. 79 μl (0.016 mmol) of 0.2 M $\text{Er}(\text{CH}_3\text{CO}_2)_3 \cdot 4\text{H}_2\text{O}$, 53.2 μl (0.032 mmol) of 0.5 M $\text{H}_2\text{O}_3\text{PC}_2\text{H}_4\text{SO}_3\text{H}$, 23.7 μl (0.048 mmol) of 2.0 M NaOH, and 54 μl H_2O were filled in a teflon reactor and heated to 160 °C for 48 h. After filtration the pink rod-shaped single crystals were isolated.

S3. Refinement

The H atoms connected to C atoms were positioned with idealized geometry and were refined isotropically with $U_{eq}(\text{H}) = 1.2 U_{eq}(\text{C})$ of the parent atom using a riding model with $\text{C}-\text{H} = 0.97 \text{ \AA}$. The H atoms connected to O atoms could not be located from the difference Fourier map and were omitted from refinement.

**Figure 1**

Asymmetric unit of the title compound. Displacement ellipsoids are drawn at 50% probability level.

**Figure 2**

First coordination sphere of the erbium ions.

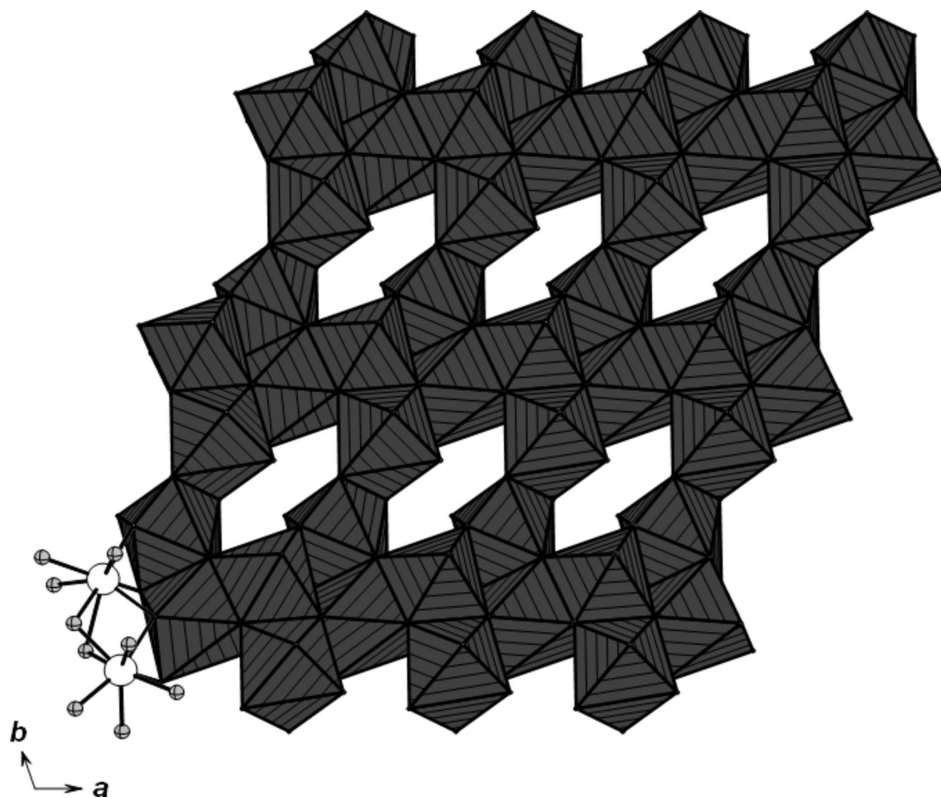


Figure 3

Inorganic Er–O–Er layer in the *ab*-plane of edge- and face-sharing ErO_8 polyhedra.

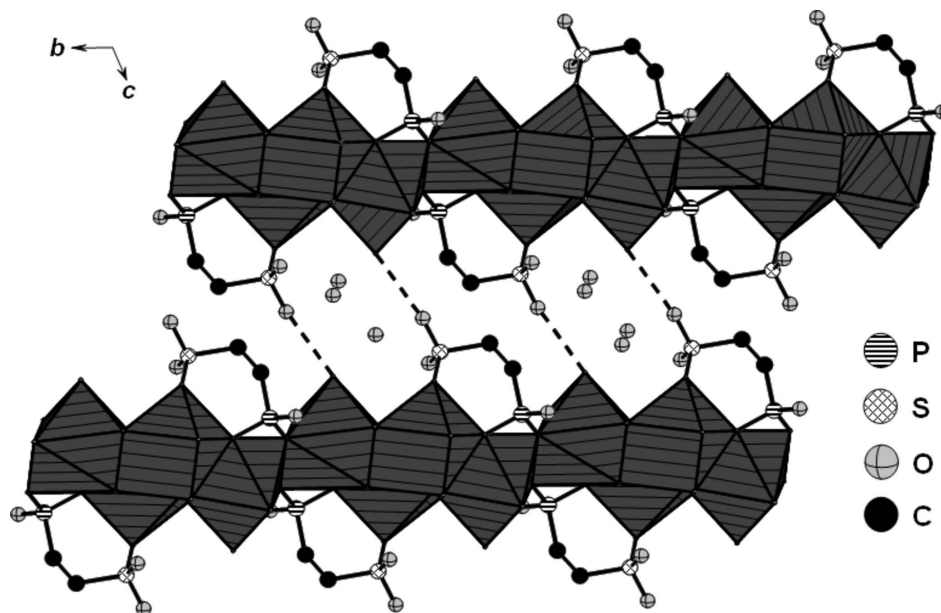


Figure 4

The anions $(\text{O}_3\text{PC}_2\text{H}_4\text{SO}_3)^{3-}$ are connected to one Er–O–Er layer at a time. The layers are linked *via* hydrogen bonds between the sulfonate groups and the coordinating water molecules into a three-dimensional structure.

Poly[[aquatri- μ_3 -hydroxido-(μ_4 -2-phosphonatoethanesulfonato)dierbium(III)] monohydrate]

Crystal data

[Er₂(C₂H₄O₆PS)(OH)₃(H₂O)]·H₂O $M_r = 608.65$ Triclinic, $P\bar{1}$

Hall symbol: -P 1

 $a = 5.8621$ (6) Å $b = 9.0443$ (9) Å $c = 11.6240$ (11) Å $\alpha = 105.543$ (12)° $\beta = 101.713$ (11)° $\gamma = 101.885$ (11)° $V = 558.81$ (10) Å³ $Z = 2$ $F(000) = 554$ $D_x = 3.611$ Mg m⁻³Mo $K\alpha$ radiation, $\lambda = 0.71073$ Å

Cell parameters from 4793 reflections

 $\theta = 2.5$ – 28° $\mu = 15.29$ mm⁻¹ $T = 293$ K

Rod, pink

 $0.08 \times 0.07 \times 0.06$ mm

Data collection

Stoe IPDS-1

diffractometer

Radiation source: fine-focus sealed tube

Graphite monochromator

 φ scansAbsorption correction: ψ scan

(X-RED and X-SHAPE; Stoe & Cie, 1999)

 $T_{\min} = 0.293$, $T_{\max} = 0.399$

4731 measured reflections

2664 independent reflections

2207 reflections with $I > 2\sigma(I)$ $R_{\text{int}} = 0.041$ $\theta_{\max} = 28.1^\circ$, $\theta_{\min} = 2.4^\circ$ $h = -7 \rightarrow 7$ $k = -11 \rightarrow 11$ $l = -15 \rightarrow 15$

Refinement

Refinement on F^2

Least-squares matrix: full

 $R[F^2 > 2\sigma(F^2)] = 0.031$ $wR(F^2) = 0.082$ $S = 0.97$

2664 reflections

155 parameters

0 restraints

Primary atom site location: structure-invariant

direct methods

Secondary atom site location: difference Fourier

map

Hydrogen site location: inferred from neighbouring sites

H-atom parameters constrained

 $w = 1/[\sigma^2(F_o^2) + (0.0577P)^2]$ where $P = (F_o^2 + 2F_c^2)/3$ $(\Delta/\sigma)_{\max} = 0.001$ $\Delta\rho_{\max} = 1.61$ e Å⁻³ $\Delta\rho_{\min} = -2.07$ e Å⁻³Extinction correction: SHELXL97 (Sheldrick, 2008), $F_c^* = kF_c[1 + 0.001x F_c^2 \lambda^3 / \sin(2\theta)]^{-1/4}$

Extinction coefficient: 0.0044 (5)

Special details

Geometry. All e.s.d.'s (except the e.s.d. in the dihedral angle between two l.s. planes) are estimated using the full covariance matrix. The cell e.s.d.'s are taken into account individually in the estimation of e.s.d.'s in distances, angles and torsion angles; correlations between e.s.d.'s in cell parameters are only used when they are defined by crystal symmetry. An approximate (isotropic) treatment of cell e.s.d.'s is used for estimating e.s.d.'s involving l.s. planes.

Refinement. Refinement of F^2 against ALL reflections. The weighted R -factor wR and goodness of fit S are based on F^2 , conventional R -factors R are based on F , with F set to zero for negative F^2 . The threshold expression of $F^2 > \sigma(F^2)$ is used only for calculating R -factors(gt) etc. and is not relevant to the choice of reflections for refinement. R -factors based on F^2 are statistically about twice as large as those based on F , and R -factors based on ALL data will be even larger.

Fractional atomic coordinates and isotropic or equivalent isotropic displacement parameters (Å²)

| | x | y | z | $U_{\text{iso}}^*/U_{\text{eq}}$ |
|-----|-------------|-------------|-------------|----------------------------------|
| Er1 | 0.21965 (5) | 0.71416 (3) | 0.57132 (3) | 0.00796 (12) |
| Er2 | 0.27992 (5) | 1.10732 (3) | 0.55352 (3) | 0.00839 (12) |

| | | | | |
|-----|-------------|-------------|--------------|-------------|
| S1 | 0.6239 (4) | 0.2840 (2) | 0.86984 (18) | 0.0197 (4) |
| P1 | 0.6867 (3) | 0.5153 (2) | 0.65414 (16) | 0.0080 (3) |
| O1 | 0.5161 (10) | 0.6197 (6) | 0.6590 (5) | 0.0150 (10) |
| O2 | 0.5556 (9) | 0.3377 (5) | 0.5872 (5) | 0.0106 (9) |
| O3 | 0.8809 (9) | 0.5494 (6) | 0.5852 (5) | 0.0129 (10) |
| O4 | 0.5879 (13) | 0.2641 (8) | 0.9845 (6) | 0.0324 (15) |
| O5 | 0.3963 (11) | 0.2164 (7) | 0.7714 (5) | 0.0214 (12) |
| O6 | 0.8156 (13) | 0.2224 (8) | 0.8314 (7) | 0.0323 (15) |
| O7 | -0.0251 (9) | 1.0829 (6) | 0.3821 (5) | 0.0110 (9) |
| O8 | 0.0459 (10) | 0.7988 (6) | 0.4152 (5) | 0.0170 (11) |
| O9 | 0.5197 (9) | 0.9454 (5) | 0.6002 (5) | 0.0100 (9) |
| O10 | 0.3173 (12) | 0.8253 (7) | 0.7926 (6) | 0.0255 (13) |
| C1 | 0.8513 (15) | 0.5462 (9) | 0.8095 (7) | 0.0185 (15) |
| H1A | 0.9760 | 0.4907 | 0.8057 | 0.022* |
| H1B | 0.9328 | 0.6592 | 0.8479 | 0.022* |
| C2 | 0.7080 (16) | 0.4931 (10) | 0.8961 (7) | 0.0217 (16) |
| H2A | 0.5621 | 0.5287 | 0.8864 | 0.026* |
| H2B | 0.8053 | 0.5464 | 0.9813 | 0.026* |
| O11 | 0.093 (2) | 1.0351 (13) | 0.9079 (12) | 0.078 (4) |

Atomic displacement parameters (Å²)

| | U^{11} | U^{22} | U^{33} | U^{12} | U^{13} | U^{23} |
|-----|--------------|--------------|--------------|--------------|--------------|--------------|
| Er1 | 0.00654 (18) | 0.00560 (17) | 0.01466 (18) | 0.00295 (11) | 0.00471 (12) | 0.00566 (12) |
| Er2 | 0.00577 (18) | 0.00797 (17) | 0.01466 (18) | 0.00329 (12) | 0.00454 (12) | 0.00646 (12) |
| S1 | 0.0221 (10) | 0.0209 (9) | 0.0176 (9) | 0.0061 (8) | 0.0051 (8) | 0.0086 (7) |
| P1 | 0.0070 (8) | 0.0064 (7) | 0.0131 (8) | 0.0029 (6) | 0.0043 (6) | 0.0053 (6) |
| O1 | 0.015 (3) | 0.015 (2) | 0.022 (3) | 0.012 (2) | 0.008 (2) | 0.009 (2) |
| O2 | 0.010 (2) | 0.009 (2) | 0.015 (2) | 0.0000 (18) | 0.0045 (19) | 0.0069 (18) |
| O3 | 0.010 (3) | 0.017 (2) | 0.016 (2) | 0.004 (2) | 0.008 (2) | 0.009 (2) |
| O4 | 0.043 (4) | 0.037 (4) | 0.018 (3) | 0.006 (3) | 0.006 (3) | 0.016 (3) |
| O5 | 0.019 (3) | 0.025 (3) | 0.012 (2) | 0.000 (2) | -0.001 (2) | 0.001 (2) |
| O6 | 0.032 (4) | 0.035 (4) | 0.039 (4) | 0.019 (3) | 0.015 (3) | 0.014 (3) |
| O7 | 0.004 (2) | 0.012 (2) | 0.016 (2) | 0.0030 (18) | 0.0005 (19) | 0.0030 (18) |
| O8 | 0.020 (3) | 0.024 (3) | 0.018 (3) | 0.019 (2) | 0.009 (2) | 0.012 (2) |
| O9 | 0.007 (2) | 0.009 (2) | 0.015 (2) | 0.0002 (18) | 0.0050 (19) | 0.0058 (18) |
| O10 | 0.032 (4) | 0.027 (3) | 0.022 (3) | 0.015 (3) | 0.009 (3) | 0.009 (2) |
| C1 | 0.015 (4) | 0.018 (4) | 0.020 (4) | -0.001 (3) | 0.003 (3) | 0.006 (3) |
| C2 | 0.023 (4) | 0.025 (4) | 0.018 (4) | 0.003 (3) | 0.006 (3) | 0.012 (3) |
| O11 | 0.108 (9) | 0.093 (7) | 0.119 (9) | 0.082 (7) | 0.093 (8) | 0.086 (7) |

Geometric parameters (Å, °)

| | | | |
|----------------------|-----------|-------|-----------|
| Er1—O1 | 2.269 (5) | S1—O4 | 1.442 (6) |
| Er1—O3 ⁱ | 2.287 (5) | S1—O6 | 1.449 (7) |
| Er1—O8 | 2.287 (5) | S1—O5 | 1.460 (6) |
| Er1—O9 | 2.334 (5) | S1—C2 | 1.777 (8) |
| Er1—O7 ⁱⁱ | 2.354 (5) | P1—O1 | 1.509 (5) |

| | | | |
|--|-------------|---|-------------|
| Er1—O10 | 2.394 (6) | P1—O2 | 1.535 (5) |
| Er1—O3 ⁱⁱⁱ | 2.450 (5) | P1—O3 | 1.547 (5) |
| Er1—O2 ⁱⁱⁱ | 2.475 (5) | P1—C1 | 1.784 (8) |
| Er1—P1 ⁱⁱⁱ | 3.1010 (18) | P1—Er1 ⁱⁱⁱ | 3.1010 (18) |
| Er1—Er2 | 3.5662 (5) | O2—Er2 ^{vi} | 2.242 (4) |
| Er1—Er2 ^{iv} | 3.7884 (6) | O2—Er1 ⁱⁱⁱ | 2.475 (5) |
| Er1—Er2 ⁱⁱ | 3.8428 (6) | O3—Er1 ^{vii} | 2.287 (5) |
| Er2—O2 ^v | 2.242 (5) | O3—Er1 ⁱⁱⁱ | 2.450 (5) |
| Er2—O8 ⁱⁱ | 2.299 (5) | O5—Er2 ^{vi} | 2.353 (5) |
| Er2—O7 | 2.317 (5) | O7—Er1 ⁱⁱ | 2.354 (5) |
| Er2—O9 | 2.319 (5) | O7—Er2 ⁱⁱ | 2.416 (5) |
| Er2—O9 ^{iv} | 2.329 (5) | O8—Er2 ⁱⁱ | 2.299 (5) |
| Er2—O5 ^v | 2.353 (5) | O9—Er2 ^{iv} | 2.329 (5) |
| Er2—O7 ⁱⁱ | 2.416 (5) | C1—C2 | 1.544 (10) |
| Er2—O8 | 2.716 (6) | C1—H1A | 0.9700 |
| Er2—Er2 ⁱⁱ | 3.2420 (8) | C1—H1B | 0.9700 |
| Er2—Er2 ^{iv} | 3.7479 (7) | C2—H2A | 0.9700 |
| Er2—Er1 ^{iv} | 3.7884 (6) | C2—H2B | 0.9700 |
| | | | |
| O1—Er1—O3 ⁱ | 101.48 (18) | O7—Er2—O8 | 67.01 (16) |
| O1—Er1—O8 | 150.13 (18) | O9—Er2—O8 | 70.88 (16) |
| O3 ⁱ —Er1—O8 | 99.53 (19) | O9 ^{iv} —Er2—O8 | 76.51 (16) |
| O1—Er1—O9 | 87.87 (18) | O5 ^v —Er2—O8 | 126.96 (17) |
| O3 ⁱ —Er1—O9 | 160.71 (18) | O7 ⁱⁱ —Er2—O8 | 54.15 (16) |
| O8—Er1—O9 | 78.90 (19) | O2 ^v —Er2—Er2 ⁱⁱ | 148.76 (13) |
| O1—Er1—O7 ⁱⁱ | 141.65 (18) | O8 ⁱⁱ —Er2—Er2 ⁱⁱ | 55.60 (15) |
| O3 ⁱ —Er1—O7 ⁱⁱ | 85.63 (17) | O7—Er2—Er2 ⁱⁱ | 48.05 (12) |
| O8—Er1—O7 ⁱⁱ | 60.84 (17) | O9—Er2—Er2 ⁱⁱ | 108.32 (12) |
| O9—Er1—O7 ⁱⁱ | 76.79 (17) | O9 ^{iv} —Er2—Er2 ⁱⁱ | 109.66 (12) |
| O1—Er1—O10 | 70.82 (19) | O5 ^v —Er2—Er2 ⁱⁱ | 112.02 (14) |
| O3 ⁱ —Er1—O10 | 86.1 (2) | O7 ⁱⁱ —Er2—Er2 ⁱⁱ | 45.52 (12) |
| O8—Er1—O10 | 131.87 (19) | O8—Er2—Er2 ⁱⁱ | 44.30 (11) |
| O9—Er1—O10 | 81.02 (19) | O2 ^v —Er2—Er1 | 142.54 (13) |
| O7 ⁱⁱ —Er1—O10 | 72.17 (18) | O8 ⁱⁱ —Er2—Er1 | 112.98 (13) |
| O1—Er1—O3 ⁱⁱⁱ | 80.62 (18) | O7—Er2—Er1 | 105.98 (12) |
| O3 ⁱ —Er1—O3 ⁱⁱⁱ | 69.78 (19) | O9—Er2—Er1 | 40.13 (11) |
| O8—Er1—O3 ⁱⁱⁱ | 87.03 (18) | O9 ^{iv} —Er2—Er1 | 90.81 (11) |
| O9—Er1—O3 ⁱⁱⁱ | 128.90 (16) | O5 ^v —Er2—Er1 | 90.97 (14) |
| O7 ⁱⁱ —Er1—O3 ⁱⁱⁱ | 135.88 (18) | O7 ⁱⁱ —Er2—Er1 | 40.96 (11) |
| O10—Er1—O3 ⁱⁱⁱ | 137.99 (18) | O8—Er2—Er1 | 39.89 (10) |
| O1—Er1—O2 ⁱⁱⁱ | 76.65 (17) | Er2 ⁱⁱ —Er2—Er1 | 68.536 (15) |
| O3 ⁱ —Er1—O2 ⁱⁱⁱ | 128.23 (17) | O2 ^v —Er2—Er2 ^{iv} | 88.10 (13) |
| O8—Er1—O2 ⁱⁱⁱ | 73.69 (17) | O8 ⁱⁱ —Er2—Er2 ^{iv} | 168.52 (15) |
| O9—Er1—O2 ⁱⁱⁱ | 70.13 (16) | O7—Er2—Er2 ^{iv} | 108.96 (12) |
| O7 ⁱⁱ —Er1—O2 ⁱⁱⁱ | 127.72 (16) | O9—Er2—Er2 ^{iv} | 36.36 (11) |
| O10—Er1—O2 ⁱⁱⁱ | 136.9 (2) | O9 ^{iv} —Er2—Er2 ^{iv} | 36.18 (12) |
| O3 ⁱⁱⁱ —Er1—O2 ⁱⁱⁱ | 58.77 (15) | O5 ^v —Er2—Er2 ^{iv} | 110.34 (15) |
| O1—Er1—P1 ⁱⁱⁱ | 76.23 (14) | O7 ⁱⁱ —Er2—Er2 ^{iv} | 103.29 (11) |

| | | | |
|--|--------------|---|--------------|
| O3 ⁱ —Er1—P1 ⁱⁱⁱ | 99.19 (13) | O8—Er2—Er2 ^{iv} | 69.65 (11) |
| O8—Er1—P1 ⁱⁱⁱ | 79.66 (13) | Er2 ⁱⁱ —Er2—Er2 ^{iv} | 113.801 (19) |
| O9—Er1—P1 ⁱⁱⁱ | 99.42 (12) | Er1—Er2—Er2 ^{iv} | 62.333 (12) |
| O7 ⁱⁱ —Er1—P1 ⁱⁱⁱ | 140.41 (12) | O2 ^v —Er2—Er1 ^{iv} | 38.73 (13) |
| O10—Er1—P1 ⁱⁱⁱ | 147.01 (15) | O8 ⁱⁱ —Er2—Er1 ^{iv} | 127.02 (12) |
| O3 ⁱⁱⁱ —Er1—P1 ⁱⁱⁱ | 29.49 (11) | O7—Er2—Er1 ^{iv} | 93.57 (12) |
| O2 ⁱⁱⁱ —Er1—P1 ⁱⁱⁱ | 29.30 (11) | O9—Er2—Er1 ^{iv} | 85.59 (11) |
| O1—Er1—Er2 | 126.95 (13) | O9 ^{iv} —Er2—Er1 ^{iv} | 35.72 (12) |
| O3 ⁱ —Er1—Er2 | 126.08 (13) | O5 ^v —Er2—Er1 ^{iv} | 109.15 (14) |
| O8—Er1—Er2 | 49.59 (14) | O7 ⁱⁱ —Er2—Er1 ^{iv} | 159.77 (11) |
| O9—Er1—Er2 | 39.82 (12) | O8—Er2—Er1 ^{iv} | 112.23 (11) |
| O7 ⁱⁱ —Er1—Er2 | 42.28 (11) | Er2 ⁱⁱ —Er2—Er1 ^{iv} | 138.048 (15) |
| O10—Er1—Er2 | 88.68 (14) | Er1—Er2—Er1 ^{iv} | 118.815 (12) |
| O3 ⁱⁱⁱ —Er1—Er2 | 133.33 (11) | Er2 ^{iv} —Er2—Er1 ^{iv} | 56.483 (10) |
| O2 ⁱⁱⁱ —Er1—Er2 | 88.92 (10) | O4—S1—O6 | 114.3 (4) |
| P1 ⁱⁱⁱ —Er1—Er2 | 112.89 (3) | O4—S1—O5 | 110.4 (4) |
| O1—Er1—Er2 ^{iv} | 81.22 (13) | O6—S1—O5 | 111.1 (4) |
| O3 ⁱ —Er1—Er2 ^{iv} | 161.90 (13) | O4—S1—C2 | 106.3 (4) |
| O8—Er1—Er2 ^{iv} | 72.40 (14) | O6—S1—C2 | 107.4 (4) |
| O9—Er1—Er2 ^{iv} | 35.63 (12) | O5—S1—C2 | 106.9 (4) |
| O7 ⁱⁱ —Er1—Er2 ^{iv} | 103.46 (11) | O1—P1—O2 | 112.9 (3) |
| O10—Er1—Er2 ^{iv} | 111.42 (16) | O1—P1—O3 | 116.1 (3) |
| O3 ⁱⁱⁱ —Er1—Er2 ^{iv} | 93.28 (11) | O2—P1—O3 | 103.3 (3) |
| O2 ⁱⁱⁱ —Er1—Er2 ^{iv} | 34.51 (11) | O1—P1—C1 | 108.1 (4) |
| P1 ⁱⁱⁱ —Er1—Er2 ^{iv} | 63.81 (3) | O2—P1—C1 | 110.6 (3) |
| Er2—Er1—Er2 ^{iv} | 61.185 (12) | O3—P1—C1 | 105.5 (3) |
| O1—Er1—Er2 ⁱⁱ | 175.89 (14) | O1—P1—Er1 ⁱⁱⁱ | 130.4 (2) |
| O3 ⁱ —Er1—Er2 ⁱⁱ | 78.19 (13) | O2—P1—Er1 ⁱⁱⁱ | 52.12 (18) |
| O8—Er1—Er2 ⁱⁱ | 33.17 (13) | O3—P1—Er1 ⁱⁱⁱ | 51.2 (2) |
| O9—Er1—Er2 ⁱⁱ | 91.27 (12) | C1—P1—Er1 ⁱⁱⁱ | 121.5 (3) |
| O7 ⁱⁱ —Er1—Er2 ⁱⁱ | 34.35 (12) | P1—O1—Er1 | 153.3 (3) |
| O10—Er1—Er2 ⁱⁱ | 105.08 (14) | P1—O2—Er2 ^{vi} | 154.7 (3) |
| O3 ⁱⁱⁱ —Er1—Er2 ⁱⁱ | 103.01 (12) | P1—O2—Er1 ⁱⁱⁱ | 98.6 (2) |
| O2 ⁱⁱⁱ —Er1—Er2 ⁱⁱ | 106.83 (11) | Er2 ^{vi} —O2—Er1 ⁱⁱⁱ | 106.76 (19) |
| P1 ⁱⁱⁱ —Er1—Er2 ⁱⁱ | 107.88 (4) | P1—O3—Er1 ^{vii} | 150.2 (3) |
| Er2—Er1—Er2 ⁱⁱ | 51.734 (13) | P1—O3—Er1 ⁱⁱⁱ | 99.3 (2) |
| Er2 ^{iv} —Er1—Er2 ⁱⁱ | 100.378 (12) | Er1 ^{vii} —O3—Er1 ⁱⁱⁱ | 110.22 (19) |
| O2 ^v —Er2—O8 ⁱⁱ | 100.04 (19) | S1—O5—Er2 ^{vi} | 136.5 (3) |
| O2 ^v —Er2—O7 | 105.14 (17) | Er2—O7—Er1 ⁱⁱ | 110.7 (2) |
| O8 ⁱⁱ —Er2—O7 | 61.23 (18) | Er2—O7—Er2 ⁱⁱ | 86.43 (16) |
| O2 ^v —Er2—O9 | 102.46 (17) | Er1 ⁱⁱ —O7—Er2 ⁱⁱ | 96.76 (17) |
| O8 ⁱⁱ —Er2—O9 | 146.13 (16) | Er1—O8—Er2 ⁱⁱ | 113.9 (2) |
| O7—Er2—O9 | 133.96 (17) | Er1—O8—Er2 | 90.51 (19) |
| O2 ^v —Er2—O9 ^{iv} | 74.44 (17) | Er2 ⁱⁱ —O8—Er2 | 80.09 (15) |
| O8 ⁱⁱ —Er2—O9 ^{iv} | 138.60 (17) | Er2—O9—Er2 ^{iv} | 107.46 (18) |
| O7—Er2—O9 ^{iv} | 80.31 (17) | Er2—O9—Er1 | 100.05 (18) |
| O9—Er2—O9 ^{iv} | 72.54 (18) | Er2 ^{iv} —O9—Er1 | 108.64 (19) |
| O2 ^v —Er2—O5 ^v | 77.68 (19) | C2—C1—P1 | 117.8 (6) |

| | | | |
|--|-------------|------------|-----------|
| O8 ⁱⁱ —Er2—O5 ^v | 79.5 (2) | C2—C1—H1A | 107.9 |
| O7—Er2—O5 ^v | 140.67 (19) | P1—C1—H1A | 107.9 |
| O9—Er2—O5 ^v | 80.92 (19) | C2—C1—H1B | 107.9 |
| O9 ^{iv} —Er2—O5 ^v | 135.8 (2) | P1—C1—H1B | 107.9 |
| O2 ^v —Er2—O7 ⁱⁱ | 153.74 (18) | H1A—C1—H1B | 107.2 |
| O8 ⁱⁱ —Er2—O7 ⁱⁱ | 72.76 (17) | C1—C2—S1 | 115.0 (6) |
| O7—Er2—O7 ⁱⁱ | 93.57 (16) | C1—C2—H2A | 108.5 |
| O9—Er2—O7 ⁱⁱ | 75.87 (16) | S1—C2—H2A | 108.5 |
| O9 ^{iv} —Er2—O7 ⁱⁱ | 127.80 (16) | C1—C2—H2B | 108.5 |
| O5 ^v —Er2—O7 ⁱⁱ | 76.18 (18) | S1—C2—H2B | 108.5 |
| O2 ^v —Er2—O8 | 150.83 (16) | H2A—C2—H2B | 107.5 |
| O8 ⁱⁱ —Er2—O8 | 99.91 (16) | | |

Symmetry codes: (i) $x-1, y, z$; (ii) $-x, -y+2, -z+1$; (iii) $-x+1, -y+1, -z+1$; (iv) $-x+1, -y+2, -z+1$; (v) $x, y+1, z$; (vi) $x, y-1, z$; (vii) $x+1, y, z$.