

Acta Crystallographica Section E

## Structure Reports

Online

ISSN 1600-5368

## Dicyclohexylammonium bromide

Kong Mun Lo and Seik Weng Ng\*

Department of Chemistry, University of Malaya, 50603 Kuala Lumpur, Malaysia

Correspondence e-mail: seikweng@um.edu.my

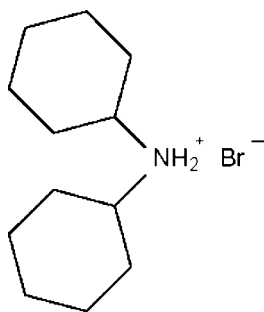
Received 22 July 2008; accepted 22 July 2008

Key indicators: single-crystal X-ray study;  $T = 100$  K; mean  $\sigma(\text{C}-\text{C}) = 0.008$  Å;  $R$  factor = 0.035;  $wR$  factor = 0.140; data-to-parameter ratio = 23.3.

In the title compound,  $\text{C}_{12}\text{H}_{24}\text{N}^+\cdot\text{Br}^-$ , both cyclohexane rings adopt the usual chair conformation. The cation and anion are linked by  $\text{N}-\text{H}\cdots\text{Br}$  hydrogen bonds into a linear chain running along the  $c$  axis.

## Related literature

For the crystal structure of dicyclohexylammonium chloride, which belongs to the space group  $P2_1/c$ , see: Ng (1995).



## Experimental

## Crystal data

 $\text{C}_{12}\text{H}_{24}\text{N}^+\cdot\text{Br}^-$  $M_r = 262.23$ Orthorhombic,  $Fdd2$  $a = 24.1258$  (4) Å $b = 39.3926$  (7) Å $c = 5.4878$  (1) Å $V = 5215.49$  (16) Å<sup>3</sup> $Z = 16$ Mo  $K\alpha$  radiation $\mu = 3.12$  mm<sup>-1</sup> $T = 100$  (2) K $0.40 \times 0.02 \times 0.02$  mm

## Data collection

Bruker SMART APEXII  
diffractometer  
Absorption correction: multi-scan  
(*SADABS*; Sheldrick, 1996)  
 $T_{\min} = 0.368$ ,  $T_{\max} = 0.940$

15058 measured reflections  
2961 independent reflections  
2483 reflections with  $I > 2\sigma(I)$   
 $R_{\text{int}} = 0.049$

## Refinement

 $R[F^2 > 2\sigma(F^2)] = 0.035$  $wR(F^2) = 0.139$  $S = 0.98$ 

2961 reflections

127 parameters

1 restraint

H-atom parameters constrained

 $\Delta\rho_{\text{max}} = 0.67$  e Å<sup>-3</sup> $\Delta\rho_{\text{min}} = -0.56$  e Å<sup>-3</sup>

Absolute structure: Flack (1983),

with 1311 Friedel pairs

Flack parameter: 0.01 (2)

Table 1

Hydrogen-bond geometry (Å, °).

$D-H\cdots A$	$D-H$	$H\cdots A$	$D\cdots A$	$D-H\cdots A$
$\text{N1}-\text{H11}\cdots\text{Br1}^i$	0.88	2.43	3.305 (5)	177
$\text{N1}-\text{H12}\cdots\text{Br1}$	0.88	2.43	3.310 (5)	176

Symmetry code: (i)  $x, y, z + 1$ .

Data collection: *APEX2* (Bruker, 2007); cell refinement: *SAINT* (Bruker, 2007); data reduction: *SAINT*; program(s) used to solve structure: *SHELXS97* (Sheldrick, 2008); program(s) used to refine structure: *SHELXL97* (Sheldrick, 2008); molecular graphics: *X-SEED* (Barbour, 2001); software used to prepare material for publication: *publCIF* (Westrip, 2008).

The authors thank the University of Malaya for funding this study (grant Nos. SF022/2007A and FS339/2008A) and also for the purchase of the diffractometer.

Supplementary data and figures for this paper are available from the IUCr electronic archives (Reference: CI2641).

## References

- Barbour, L. J. (2001). *J. Supramol. Chem.* **1**, 189–191.  
 Bruker (2007). *APEX2* and *SAINT*. Bruker AXS Inc., Madison, Wisconsin, USA.  
 Flack, H. D. (1983). *Acta Cryst.* **A39**, 876–881.  
 Ng, S. W. (1995). *Acta Cryst.* **C51**, 2149–2150.  
 Sheldrick, G. M. (1996). *SADABS*. University of Göttingen, Germany.  
 Sheldrick, G. M. (2008). *Acta Cryst.* **A64**, 112–122.  
 Westrip, S. P. (2008). *publCIF*. In preparation.

## supporting information

*Acta Cryst.* (2008). E64, o1624 [doi:10.1107/S1600536808023155]

## Dicyclohexylammonium bromide

Kong Mun Lo and Seik Weng Ng

### S1. Comment

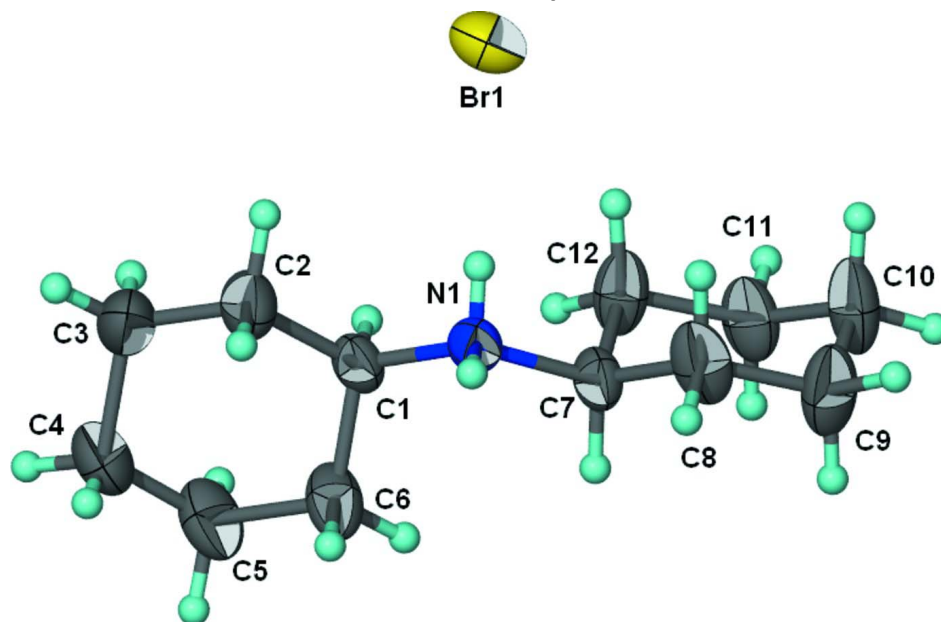
In the title compound (Fig.1) both cyclohexane rings adopt the usual chair conformation. In the crystal structure, the cation and anion are linked by N—H···Br hydrogen bonds (Table 1) into a linear chain running along the *c* axis.

### S2. Experimental

This compound was obtained as a side product from the reaction between dicyclohexylammonium bis(chlorodifluoroacetato)cyclopentylidiphenylstannate (0.5 g, 0.6 mmol) and 4-dimethylaminopyridine hydrobromide perbromide (0.23 g, 0.6 mmol) in a mixture of chloroform and ethanol. Crystals were obtained upon evaporation of the solvent.

### S3. Refinement

H atoms were placed in calculated positions (N—H = 0.88 Å and C—H = 0.99–1.00 Å) and were included in the refinement in the riding model approximation, with  $U_{\text{iso}}(\text{H}) = 1.2U_{\text{eq}}(\text{C}, \text{N})$ .



**Figure 1**

Displacement ellipsoid plot (Barbour, 2001) of  $[(\text{C}_6\text{H}_{11})_2\text{NH}_2]^+ \cdot \text{Br}^-$  at the 70% probability level. Hydrogen atoms are drawn as spheres of arbitrary radius.

## Dicyclohexylammonium bromide

## Crystal data

 $C_{12}H_{24}N^+ \cdot Br^-$  $M_r = 262.23$ Orthorhombic,  $Fdd2$ Hall symbol:  $F 2 -2d$  $a = 24.1258 (4) \text{ \AA}$  $b = 39.3926 (7) \text{ \AA}$  $c = 5.4878 (1) \text{ \AA}$  $V = 5215.49 (16) \text{ \AA}^3$  $Z = 16$  $F(000) = 2208$  $D_x = 1.336 \text{ Mg m}^{-3}$ Mo  $K\alpha$  radiation,  $\lambda = 0.71073 \text{ \AA}$ 

Cell parameters from 3733 reflections

 $\theta = 2.7\text{--}23.5^\circ$  $\mu = 3.12 \text{ mm}^{-1}$  $T = 100 \text{ K}$ 

Prism, colourless

 $0.40 \times 0.02 \times 0.02 \text{ mm}$ 

## Data collection

Bruker SMART APEXII

diffractometer

Radiation source: fine-focus sealed tube

Graphite monochromator

 $\omega$  scans

Absorption correction: multi-scan

(SADABS; Sheldrick, 1996)

 $T_{\min} = 0.368$ ,  $T_{\max} = 0.940$ 

15058 measured reflections

2961 independent reflections

2483 reflections with  $I > 2\sigma(I)$  $R_{\text{int}} = 0.049$  $\theta_{\max} = 27.5^\circ$ ,  $\theta_{\min} = 2.0^\circ$  $h = -31 \rightarrow 31$  $k = -50 \rightarrow 50$  $l = -7 \rightarrow 6$ 

## Refinement

Refinement on  $F^2$ 

Least-squares matrix: full

 $R[F^2 > 2\sigma(F^2)] = 0.035$  $wR(F^2) = 0.139$  $S = 0.98$ 

2961 reflections

127 parameters

1 restraint

Primary atom site location: structure-invariant

direct methods

Secondary atom site location: difference Fourier

map

Hydrogen site location: inferred from

neighbouring sites

H-atom parameters constrained

 $w = 1/[\sigma^2(F_o^2) + (0.1P)^2 + 1P]$ where  $P = (F_o^2 + 2F_c^2)/3$  $(\Delta/\sigma)_{\max} = 0.001$  $\Delta\rho_{\max} = 0.67 \text{ e \AA}^{-3}$  $\Delta\rho_{\min} = -0.56 \text{ e \AA}^{-3}$ 

Absolute structure: Flack (1983), with 1311

Friedel pairs

Absolute structure parameter: 0.01 (2)

Fractional atomic coordinates and isotropic or equivalent isotropic displacement parameters ( $\text{\AA}^2$ )

	<i>x</i>	<i>y</i>	<i>z</i>	$U_{\text{iso}}^*/U_{\text{eq}}$
Br1	0.057495 (18)	0.153140 (12)	0.50000 (6)	0.03906 (17)
N1	-0.01800 (15)	0.14541 (8)	1.0006 (10)	0.0288 (7)
H11	0.0030	0.1479	1.1305	0.035*
H12	0.0036	0.1475	0.8724	0.035*
C1	-0.05883 (19)	0.17402 (9)	0.9961 (13)	0.0304 (8)
H1	-0.0854	0.1705	0.8584	0.037*
C2	-0.0271 (3)	0.20707 (12)	0.9555 (13)	0.0493 (16)
H2A	-0.0068	0.2059	0.7988	0.059*
H2B	0.0004	0.2102	1.0875	0.059*
C3	-0.0668 (4)	0.23723 (14)	0.9517 (13)	0.060 (2)
H3A	-0.0454	0.2585	0.9340	0.072*
H3B	-0.0919	0.2352	0.8098	0.072*

C4	-0.1006 (3)	0.23867 (14)	1.1826 (12)	0.0534 (17)
H4A	-0.0758	0.2438	1.3216	0.064*
H4B	-0.1280	0.2573	1.1697	0.064*
C5	-0.1307 (2)	0.20596 (13)	1.2315 (17)	0.0496 (14)
H5A	-0.1592	0.2024	1.1044	0.060*
H5B	-0.1498	0.2075	1.3909	0.060*
C6	-0.0908 (2)	0.17545 (11)	1.2338 (15)	0.0428 (12)
H6A	-0.0646	0.1776	1.3718	0.051*
H6B	-0.1121	0.1542	1.2557	0.051*
C7	-0.04080 (18)	0.10966 (10)	1.0028 (13)	0.0317 (9)
H7	-0.0664	0.1068	1.1448	0.038*
C8	0.0077 (2)	0.08534 (12)	1.0283 (12)	0.0442 (13)
H8A	0.0272	0.0898	1.1839	0.053*
H8B	0.0343	0.0892	0.8937	0.053*
C9	-0.0117 (3)	0.04860 (12)	1.0227 (15)	0.0514 (15)
H9A	-0.0363	0.0442	1.1637	0.062*
H9B	0.0207	0.0333	1.0359	0.062*
C10	-0.0429 (3)	0.04108 (12)	0.7870 (14)	0.0489 (16)
H10A	-0.0173	0.0432	0.6469	0.059*
H10B	-0.0570	0.0175	0.7907	0.059*
C11	-0.0911 (2)	0.06546 (12)	0.7555 (15)	0.0438 (12)
H11A	-0.1185	0.0614	0.8864	0.053*
H11B	-0.1094	0.0609	0.5976	0.053*
C12	-0.0729 (2)	0.10264 (11)	0.7628 (15)	0.0404 (11)
H12A	-0.1058	0.1176	0.7536	0.048*
H12B	-0.0488	0.1076	0.6212	0.048*

*Atomic displacement parameters (Å<sup>2</sup>)*

	$U^{11}$	$U^{22}$	$U^{33}$	$U^{12}$	$U^{13}$	$U^{23}$
Br1	0.0308 (2)	0.0537 (3)	0.0327 (2)	-0.0001 (2)	0.0004 (2)	-0.0078 (2)
N1	0.0362 (18)	0.0267 (16)	0.0236 (17)	0.0004 (13)	-0.003 (2)	-0.003 (2)
C1	0.038 (2)	0.0261 (17)	0.0277 (19)	0.0028 (17)	-0.003 (2)	-0.007 (3)
C2	0.062 (3)	0.028 (2)	0.058 (4)	-0.002 (2)	0.023 (3)	-0.002 (2)
C3	0.104 (5)	0.031 (2)	0.044 (4)	0.008 (3)	0.015 (4)	0.002 (2)
C4	0.067 (4)	0.038 (3)	0.056 (4)	0.010 (3)	0.015 (3)	-0.010 (3)
C5	0.042 (3)	0.042 (3)	0.065 (4)	0.007 (2)	0.004 (4)	-0.013 (3)
C6	0.032 (2)	0.030 (2)	0.066 (4)	0.0003 (17)	0.014 (3)	-0.006 (3)
C7	0.037 (2)	0.0227 (17)	0.036 (2)	-0.0002 (15)	0.000 (3)	-0.005 (2)
C8	0.052 (3)	0.039 (2)	0.042 (3)	0.012 (2)	-0.023 (3)	-0.013 (3)
C9	0.070 (4)	0.029 (2)	0.055 (4)	0.010 (2)	-0.025 (4)	0.000 (3)
C10	0.055 (3)	0.026 (2)	0.066 (5)	0.005 (2)	-0.020 (3)	-0.013 (3)
C11	0.046 (3)	0.032 (2)	0.053 (3)	0.0006 (19)	-0.014 (4)	-0.013 (3)
C12	0.042 (2)	0.027 (2)	0.052 (3)	-0.0005 (18)	-0.018 (3)	-0.002 (3)

*Geometric parameters (Å, °)*

N1—C1	1.497 (5)	C6—H6A	0.99
N1—C7	1.512 (5)	C6—H6B	0.99
N1—H11	0.88	C7—C8	1.520 (7)
N1—H12	0.88	C7—C12	1.552 (9)
C1—C6	1.517 (10)	C7—H7	1.00
C1—C2	1.527 (6)	C8—C9	1.522 (7)
C1—H1	1.00	C8—H8A	0.99
C2—C3	1.527 (8)	C8—H8B	0.99
C2—H2A	0.99	C9—C10	1.525 (10)
C2—H2B	0.99	C9—H9A	0.99
C3—C4	1.508 (9)	C9—H9B	0.99
C3—H3A	0.99	C10—C11	1.517 (7)
C3—H3B	0.99	C10—H10A	0.99
C4—C5	1.503 (9)	C10—H10B	0.99
C4—H4A	0.99	C11—C12	1.529 (6)
C4—H4B	0.99	C11—H11A	0.99
C5—C6	1.540 (6)	C11—H11B	0.99
C5—H5A	0.99	C12—H12A	0.99
C5—H5B	0.99	C12—H12B	0.99
C1—N1—C7	117.5 (3)	C1—C6—H6B	109.7
C1—N1—H11	107.9	C5—C6—H6B	109.7
C7—N1—H11	107.9	H6A—C6—H6B	108.2
C1—N1—H12	107.9	N1—C7—C8	107.9 (4)
C7—N1—H12	107.9	N1—C7—C12	109.9 (5)
H11—N1—H12	107.2	C8—C7—C12	110.5 (4)
N1—C1—C6	110.4 (5)	N1—C7—H7	109.5
N1—C1—C2	108.3 (4)	C8—C7—H7	109.5
C6—C1—C2	110.4 (4)	C12—C7—H7	109.5
N1—C1—H1	109.2	C7—C8—C9	111.1 (4)
C6—C1—H1	109.2	C7—C8—H8A	109.4
C2—C1—H1	109.2	C9—C8—H8A	109.4
C1—C2—C3	110.5 (5)	C7—C8—H8B	109.4
C1—C2—H2A	109.5	C9—C8—H8B	109.4
C3—C2—H2A	109.5	H8A—C8—H8B	108.0
C1—C2—H2B	109.5	C8—C9—C10	110.7 (5)
C3—C2—H2B	109.5	C8—C9—H9A	109.5
H2A—C2—H2B	108.1	C10—C9—H9A	109.5
C4—C3—C2	111.0 (5)	C8—C9—H9B	109.5
C4—C3—H3A	109.4	C10—C9—H9B	109.5
C2—C3—H3A	109.4	H9A—C9—H9B	108.1
C4—C3—H3B	109.4	C11—C10—C9	110.6 (5)
C2—C3—H3B	109.4	C11—C10—H10A	109.5
H3A—C3—H3B	108.0	C9—C10—H10A	109.5
C5—C4—C3	112.3 (5)	C11—C10—H10B	109.5
C5—C4—H4A	109.1	C9—C10—H10B	109.5

C3—C4—H4A	109.1	H10A—C10—H10B	108.1
C5—C4—H4B	109.1	C10—C11—C12	112.6 (4)
C3—C4—H4B	109.1	C10—C11—H11A	109.1
H4A—C4—H4B	107.9	C12—C11—H11A	109.1
C4—C5—C6	111.6 (5)	C10—C11—H11B	109.1
C4—C5—H5A	109.3	C12—C11—H11B	109.1
C6—C5—H5A	109.3	H11A—C11—H11B	107.8
C4—C5—H5B	109.3	C11—C12—C7	109.6 (5)
C6—C5—H5B	109.3	C11—C12—H12A	109.7
H5A—C5—H5B	108.0	C7—C12—H12A	109.7
C1—C6—C5	109.9 (6)	C11—C12—H12B	109.7
C1—C6—H6A	109.7	C7—C12—H12B	109.7
C5—C6—H6A	109.7	H12A—C12—H12B	108.2
C7—N1—C1—C6	67.5 (6)	C1—N1—C7—C8	-175.4 (6)
C7—N1—C1—C2	-171.5 (6)	C1—N1—C7—C12	64.0 (6)
N1—C1—C2—C3	-179.5 (5)	N1—C7—C8—C9	-177.9 (6)
C6—C1—C2—C3	-58.5 (7)	C12—C7—C8—C9	-57.7 (7)
C1—C2—C3—C4	56.2 (8)	C7—C8—C9—C10	57.9 (8)
C2—C3—C4—C5	-54.5 (8)	C8—C9—C10—C11	-56.1 (8)
C3—C4—C5—C6	54.4 (9)	C9—C10—C11—C12	55.9 (9)
N1—C1—C6—C5	177.4 (4)	C10—C11—C12—C7	-55.3 (8)
C2—C1—C6—C5	57.6 (6)	N1—C7—C12—C11	174.6 (4)
C4—C5—C6—C1	-55.7 (8)	C8—C7—C12—C11	55.6 (7)

Hydrogen-bond geometry (Å, °)

<i>D</i> —H $\cdots$ <i>A</i>	<i>D</i> —H	H $\cdots$ <i>A</i>	<i>D</i> $\cdots$ <i>A</i>	<i>D</i> —H $\cdots$ <i>A</i>
N1—H11 $\cdots$ Br1 <sup>i</sup>	0.88	2.43	3.305 (5)	177
N1—H12 $\cdots$ Br1	0.88	2.43	3.310 (5)	176

Symmetry code: (i) *x*, *y*, *z*+1.