

Acta Crystallographica Section E

Structure Reports

Online

ISSN 1600-5368

catena-Poly[[di- μ -bromido-dicopper(I)]-bis[μ - η^2, σ^1 -4-(2-allyl-2H-tetrazol-5-yl)pyridine]]

Wei Wang

Ordered Matter Science Research Center, Southeast University, Nanjing 210096, People's Republic of China

Correspondence e-mail: seu_ww@yahoo.com.cn

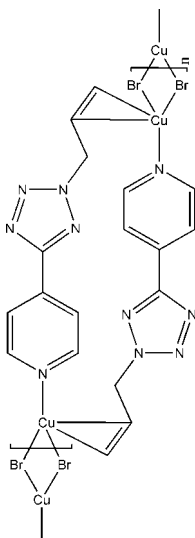
Received 24 April 2008; accepted 29 April 2008

Key indicators: single-crystal X-ray study; $T = 293$ K; mean $\sigma(\text{C}-\text{C}) = 0.006$ Å; R factor = 0.039; wR factor = 0.088; data-to-parameter ratio = 17.6.

The title compound, $[\text{CuBr}(\text{C}_9\text{H}_9\text{N}_5)]_n$, prepared by the solvothermal treatment of CuBr with 4-(2-allyl-2H-tetrazol-5-yl)pyridine, is a new homometallic Cu^{I} -olefin coordination polymer in which dinuclear Cu_2Br_2 units are linked by the organic olefin ligand 4-(2-allyl-2H-tetrazol-5-yl)pyridine, which acts as a bidentate ligand connecting two neighbouring Cu_2Br_2 units through the pyridine N atom and the double bond of the allyl group. The coordination of Cu(I) is slightly distorted tetrahedral.

Related literature

For the solvothermal synthesis and related structures, see: Ye *et al.* (2005, 2007).



Experimental

Crystal data

$[\text{CuBr}(\text{C}_9\text{H}_9\text{N}_5)]$
 $M_r = 330.66$
 Monoclinic, $C2/c$
 $a = 17.502$ (3) Å
 $b = 12.047$ (2) Å
 $c = 13.664$ (3) Å
 $\beta = 129.52$ (3)°

$V = 2222.4$ (12) Å³
 $Z = 8$
 Mo $K\alpha$ radiation
 $\mu = 5.54$ mm⁻¹
 $T = 293$ (2) K
 $0.2 \times 0.15 \times 0.1$ mm

Data collection

Rigaku Mercury2 diffractometer
 Absorption correction: multi-scan
 (*CrystalClear*; Rigaku, 2005)
 $T_{\text{min}} = 0.661$, $T_{\text{max}} = 1$
 (expected range = 0.380–0.575)

11222 measured reflections
 2552 independent reflections
 1962 reflections with $I > 2\sigma(I)$
 $R_{\text{int}} = 0.050$

Refinement

$R[F^2 > 2\sigma(F^2)] = 0.039$
 $wR(F^2) = 0.088$
 $S = 1.07$
 2552 reflections

145 parameters
 H-atom parameters constrained
 $\Delta\rho_{\text{max}} = 0.40$ e Å⁻³
 $\Delta\rho_{\text{min}} = -0.77$ e Å⁻³

Data collection: *CrystalClear* (Rigaku, 2005); cell refinement: *CrystalClear*; data reduction: *CrystalClear*; program(s) used to solve structure: *SHELXS97* (Sheldrick, 2008); program(s) used to refine structure: *SHELXL97* (Sheldrick, 2008); molecular graphics: *ORTEP-III* (Johnson & Burnett, 1997) and *ORTEP-3 for Windows* (Farrugia, 1997); software used to prepare material for publication: *SHELXL97*.

This work was supported by a Start-up Grant from SEU to Professor Ren-Gen Xiong.

Supplementary data and figures for this paper are available from the IUCr electronic archives (Reference: DN2345).

References

- Farrugia, L. J. (1997). *J. Appl. Cryst.* **30**, 565.
 Johnson, C. K. & Burnett, M. N. (1997). *ORTEP-III*. University of Glasgow, Scotland.
 Rigaku (2005). *CrystalClear*. Rigaku Corporation, Tokyo, Japan.
 Sheldrick, G. M. (2008). *Acta Cryst.* **A64**, 112–122.
 Ye, Q., Wang, X.-S., Zhao, H. & Xiong, R.-G. (2005). *Chem. Soc. Rev.* **34**, 208–225.
 Ye, Q., Zhao, H., Qu, Z.-R., Xiong, R.-G., Fu, D.-W., Xiong, R.-G., Cui, Y.-P., Akutagawa, T., Chan, P. W. H. & Nakamura, T. (2007). *Angew. Chem. Int. Ed.* **46**, 6852–6856.

supporting information

Acta Cryst. (2008). E64, m902 [doi:10.1107/S1600536808012439]

catena-Poly[[di- μ -bromido-dicopper(I)]bis[μ - η^2,σ^1 -4-(2-allyl-2H-tetrazol-5-yl)pyridine]]

Wei Wang

S1. Comment

Hydrothermal or solvothermal syntheses can offer some interesting reactions and compounds which can't be obtained through conventional solution techniques. In sealed tube, unstable copper (I) salt can exist under vacuums, and then interesting copper (I) organometallic compound can be prepared. The title compound is obtained through solvothermal treatment of CuBr and 4-(2-allyl-2H-tetrazol-5-yl) pyridine in methanol solvent at 75°C.

The copper(I) is coordinated to two organic ligands and two bridging Br atoms to fulfill its tetrahedral coordination environment (Fig 1). The organic ligand acts as a bidentate ligand connecting two neighbouring Cu₂Br₂ dinuclear units through N atom from pyridine ring and double bond of the allyl group thus leading to an homometallic Cu^I olefin coordination polymer developing along the *b* axis. Unfortunately, the N atoms of the tetrazole ring fail to coordinate to Cu^I.

S2. Experimental

A mixture of 4-(2-allyl-2H-tetrazol-5-yl) pyridine (20 mg, 0.2 mmol), CuBr (35 mg, 0.4 mmol), and methanol (2 ml) sealed in a glass tube were maintained at 75 °C with yield 75%. Crystals suitable for X-ray analysis were obtained after 5 days

S3. Refinement

All H atoms were fixed geometrically and treated as riding with C—H = 0.93 Å (aromatic), 0.97 Å (methylene) or 0.98 Å (methine) with $U_{\text{iso}}(\text{H}) = 1.2U_{\text{eq}}(\text{C})$.

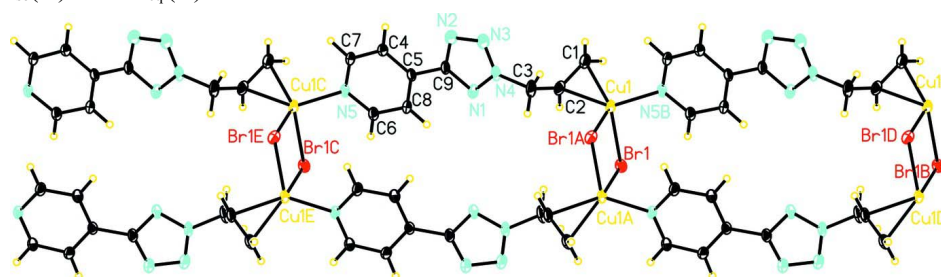


Figure 1

The one-dimensional structure of the title compound with the atom-labelling scheme. Displacement ellipsoids are drawn at the 30% probability level. H atoms have been omitted for clarity. [Symmetry codes: (i) $1 - x, y, 3/2 - z$; (ii) $x, y - 1, z$; (C) $x, y + 1, z$; (iii) $1 - x, 1 + y, 3/2 - z$.].

catena-Poly[[di- μ -bromido-dicopper(I)]bis[μ - η^2, σ^1 -4-(2-allyl-2H-tetrazol-5-yl)pyridine]]

Crystal data

[CuBr(C₉H₉N₅)] $M_r = 330.66$ Monoclinic, $C2/c$ Hall symbol: $-C\ 2yc$ $a = 17.502\ (3)\ \text{\AA}$ $b = 12.047\ (2)\ \text{\AA}$ $c = 13.664\ (3)\ \text{\AA}$ $\beta = 129.52\ (3)^\circ$ $V = 2222.4\ (12)\ \text{\AA}^3$ $Z = 8$ $F(000) = 1296$ $D_x = 1.977\ \text{Mg m}^{-3}$ Mo $K\alpha$ radiation, $\lambda = 0.71073\ \text{\AA}$

Cell parameters from 10074 reflections

 $\theta = 3.0\text{--}28.8^\circ$ $\mu = 5.54\ \text{mm}^{-1}$ $T = 293\ \text{K}$

Block, colorless

 $0.2 \times 0.15 \times 0.1\ \text{mm}$

Data collection

Rigaku Mercury2

diffractometer

Radiation source: fine-focus sealed tube

Graphite monochromator

Detector resolution: $13.6612\ \text{pixels mm}^{-1}$

CCD_Profile_fitting scans

Absorption correction: multi-scan

(CrystalClear; Rigaku, 2005)

 $T_{\min} = 0.661, T_{\max} = 1$

11222 measured reflections

2552 independent reflections

1962 reflections with $I > 2\sigma(I)$ $R_{\text{int}} = 0.050$ $\theta_{\max} = 27.5^\circ, \theta_{\min} = 3.0^\circ$ $h = -22 \rightarrow 22$ $k = -15 \rightarrow 15$ $l = -17 \rightarrow 17$

Refinement

Refinement on F^2

Least-squares matrix: full

 $R[F^2 > 2\sigma(F^2)] = 0.039$ $wR(F^2) = 0.088$ $S = 1.07$

2552 reflections

145 parameters

0 restraints

Primary atom site location: structure-invariant

direct methods

Secondary atom site location: difference Fourier map

Hydrogen site location: inferred from neighbouring sites

H-atom parameters constrained

 $w = 1/[\sigma^2(F_o^2) + (0.03P)^2 + 4.1679P]$ where $P = (F_o^2 + 2F_c^2)/3$ $(\Delta/\sigma)_{\max} = 0.001$ $\Delta\rho_{\max} = 0.40\ \text{e \AA}^{-3}$ $\Delta\rho_{\min} = -0.77\ \text{e \AA}^{-3}$

Special details

Geometry. All esds (except the esd in the dihedral angle between two l.s. planes) are estimated using the full covariance matrix. The cell esds are taken into account individually in the estimation of esds in distances, angles and torsion angles; correlations between esds in cell parameters are only used when they are defined by crystal symmetry. An approximate (isotropic) treatment of cell esds is used for estimating esds involving l.s. planes.

Refinement. Refinement of F^2 against ALL reflections. The weighted R -factor wR and goodness of fit S are based on F^2 , conventional R -factors R are based on F , with F set to zero for negative F^2 . The threshold expression of $F^2 > \sigma(F^2)$ is used only for calculating R -factors(gt) etc. and is not relevant to the choice of reflections for refinement. R -factors based on F^2 are statistically about twice as large as those based on F , and R -factors based on ALL data will be even larger.

Fractional atomic coordinates and isotropic or equivalent isotropic displacement parameters (\AA^2)

	x	y	z	$U_{\text{iso}}^*/U_{\text{eq}}$
Cu1	0.39530 (4)	-0.00789 (3)	0.59335 (4)	0.03898 (15)
Br1	0.41669 (3)	-0.00735 (3)	0.79367 (3)	0.03492 (12)
N1	0.4034 (2)	0.4106 (2)	0.5433 (3)	0.0379 (8)
N2	0.3650 (3)	0.4582 (3)	0.3597 (3)	0.0448 (8)

N3	0.3835 (3)	0.3508 (3)	0.3743 (3)	0.0475 (9)
N4	0.4055 (2)	0.3250 (2)	0.4833 (3)	0.0363 (7)
N5	0.3645 (2)	0.8317 (2)	0.5386 (3)	0.0319 (7)
C1	0.2905 (3)	0.0849 (3)	0.4367 (4)	0.0397 (9)
H1A	0.2909	0.0807	0.3661	0.048*
H1B	0.2243	0.0836	0.4105	0.048*
C2	0.3548 (3)	0.1574 (3)	0.5299 (4)	0.0376 (9)
H2	0.3295	0.2001	0.5648	0.045*
C3	0.4350 (3)	0.2120 (3)	0.5368 (4)	0.0449 (10)
H3A	0.4950	0.2157	0.6246	0.054*
H3B	0.4488	0.1681	0.4902	0.054*
C4	0.3456 (3)	0.6920 (3)	0.4013 (3)	0.0356 (9)
H4	0.3317	0.6742	0.3251	0.043*
C5	0.3673 (2)	0.6090 (3)	0.4859 (3)	0.0285 (7)
C6	0.3807 (3)	0.7513 (3)	0.6168 (3)	0.0338 (8)
H6	0.3909	0.7711	0.6901	0.041*
C7	0.3451 (3)	0.8007 (3)	0.4310 (3)	0.0366 (9)
H7	0.3304	0.8554	0.3732	0.044*
C8	0.3830 (3)	0.6403 (3)	0.5945 (3)	0.0338 (8)
H8	0.3951	0.5871	0.6522	0.041*
C9	0.3769 (3)	0.4926 (3)	0.4619 (3)	0.0315 (8)

Atomic displacement parameters (Å²)

	U^{11}	U^{22}	U^{33}	U^{12}	U^{13}	U^{23}
Cu1	0.0551 (3)	0.0158 (2)	0.0379 (3)	0.0008 (2)	0.0258 (2)	-0.00052 (17)
Br1	0.0433 (2)	0.0305 (2)	0.0396 (2)	-0.00627 (16)	0.03041 (19)	-0.00676 (15)
N1	0.0484 (19)	0.0190 (15)	0.0431 (19)	0.0017 (14)	0.0276 (17)	0.0017 (13)
N2	0.062 (2)	0.0236 (16)	0.043 (2)	0.0066 (16)	0.0307 (18)	0.0007 (14)
N3	0.068 (2)	0.0244 (17)	0.048 (2)	0.0036 (16)	0.036 (2)	-0.0030 (14)
N4	0.0409 (18)	0.0135 (14)	0.050 (2)	0.0011 (13)	0.0271 (17)	-0.0007 (13)
N5	0.0372 (17)	0.0154 (14)	0.0352 (17)	0.0002 (12)	0.0193 (15)	-0.0010 (12)
C1	0.039 (2)	0.0268 (19)	0.048 (2)	0.0042 (16)	0.0248 (19)	0.0102 (17)
C2	0.057 (2)	0.0164 (17)	0.047 (2)	0.0117 (17)	0.037 (2)	0.0068 (15)
C3	0.044 (2)	0.0163 (18)	0.064 (3)	0.0055 (16)	0.029 (2)	0.0065 (17)
C4	0.051 (2)	0.0209 (17)	0.031 (2)	-0.0029 (16)	0.0243 (19)	-0.0024 (14)
C5	0.0269 (17)	0.0171 (16)	0.0332 (18)	-0.0031 (14)	0.0153 (16)	-0.0011 (13)
C6	0.045 (2)	0.0199 (17)	0.038 (2)	-0.0036 (15)	0.0272 (19)	-0.0026 (15)
C7	0.049 (2)	0.0185 (17)	0.037 (2)	0.0002 (16)	0.0248 (19)	0.0047 (15)
C8	0.042 (2)	0.0199 (17)	0.036 (2)	-0.0025 (15)	0.0236 (18)	0.0034 (14)
C9	0.0322 (17)	0.0168 (17)	0.0372 (19)	-0.0029 (14)	0.0182 (16)	0.0003 (14)

Geometric parameters (Å, °)

Cu1—N5 ⁱ	2.017 (3)	C1—H1A	0.9700
Cu1—C1	2.050 (4)	C1—H1B	0.9700
Cu1—C2	2.106 (3)	C2—C3	1.496 (6)
Cu1—Br1	2.5156 (9)	C2—H2	0.9800

Cu1—Br1 ⁱⁱ	2.5973 (11)	C3—H3A	0.9700
Br1—Cu1 ⁱⁱ	2.5973 (11)	C3—H3B	0.9700
N1—C9	1.330 (4)	C4—C7	1.373 (5)
N1—N4	1.332 (4)	C4—C5	1.386 (5)
N2—N3	1.317 (4)	C4—H4	0.9300
N2—C9	1.340 (5)	C5—C8	1.378 (5)
N3—N4	1.317 (5)	C5—C9	1.475 (4)
N4—C3	1.475 (4)	C6—C8	1.378 (5)
N5—C6	1.332 (4)	C6—H6	0.9300
N5—C7	1.334 (4)	C7—H7	0.9300
N5—Cu1 ⁱⁱⁱ	2.017 (3)	C8—H8	0.9300
C1—C2	1.351 (5)		
N5 ⁱ —Cu1—C1	106.55 (13)	C3—C2—Cu1	109.5 (2)
N5 ⁱ —Cu1—C2	144.30 (14)	C1—C2—H2	115.7
C1—Cu1—C2	37.93 (14)	C3—C2—H2	115.7
N5 ⁱ —Cu1—Br1	103.04 (9)	Cu1—C2—H2	115.7
C1—Cu1—Br1	123.33 (12)	N4—C3—C2	110.9 (3)
C2—Cu1—Br1	102.94 (10)	N4—C3—H3A	109.5
N5 ⁱ —Cu1—Br1 ⁱⁱ	99.28 (9)	C2—C3—H3A	109.5
C1—Cu1—Br1 ⁱⁱ	124.96 (11)	N4—C3—H3B	109.5
C2—Cu1—Br1 ⁱⁱ	102.07 (11)	C2—C3—H3B	109.5
Br1—Cu1—Br1 ⁱⁱ	95.64 (4)	H3A—C3—H3B	108.0
Cu1—Br1—Cu1 ⁱⁱ	84.36 (4)	C7—C4—C5	119.4 (3)
C9—N1—N4	101.0 (3)	C7—C4—H4	120.3
N3—N2—C9	106.6 (3)	C5—C4—H4	120.3
N4—N3—N2	105.6 (3)	C8—C5—C4	117.6 (3)
N3—N4—N1	114.3 (3)	C8—C5—C9	121.8 (3)
N3—N4—C3	122.5 (3)	C4—C5—C9	120.6 (3)
N1—N4—C3	123.2 (3)	N5—C6—C8	123.3 (3)
C6—N5—C7	117.1 (3)	N5—C6—H6	118.3
C6—N5—Cu1 ⁱⁱⁱ	121.9 (2)	C8—C6—H6	118.3
C7—N5—Cu1 ⁱⁱⁱ	119.8 (2)	N5—C7—C4	123.2 (3)
C2—C1—Cu1	73.3 (2)	N5—C7—H7	118.4
C2—C1—H1A	116.2	C4—C7—H7	118.4
Cu1—C1—H1A	116.2	C6—C8—C5	119.3 (3)
C2—C1—H1B	116.2	C6—C8—H8	120.3
Cu1—C1—H1B	116.2	C5—C8—H8	120.3
H1A—C1—H1B	113.2	N1—C9—N2	112.5 (3)
C1—C2—C3	122.0 (4)	N1—C9—C5	123.2 (3)
C1—C2—Cu1	68.8 (2)	N2—C9—C5	124.2 (3)

Symmetry codes: (i) $x, y-1, z$; (ii) $-x+1, y, -z+3/2$; (iii) $x, y+1, z$.