

Acta Crystallographica Section E

Structure Reports

Online

ISSN 1600-5368

1,2-Bis(1,3-dithiol-2-ylidene)hydrazine

 Hong-ai Li,^a Chang Su,^a Bao Li,^b Tie Chen^a and Bing-zhu Yin^{a*}
^aKey Laboratory of Organism Functional Factors of Changbai Mountain, Yanbian University, Ministry of Education, Yanji 133002, People's Republic of China, and

^bState Key Laboratory of Supramolecular Structure and Materials, College of Chemistry, Jilin University, Changchun 130012, People's Republic of China

Correspondence e-mail: zqcong@ybu.edu.cn

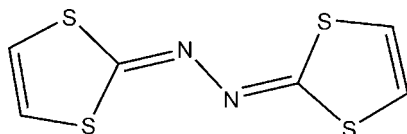
Received 20 May 2008; accepted 31 May 2008

 Key indicators: single-crystal X-ray study; $T = 291$ K; mean $\sigma(\text{C}-\text{C}) = 0.003$ Å; R factor = 0.025; wR factor = 0.067; data-to-parameter ratio = 18.6.

The title molecule, $\text{C}_6\text{H}_4\text{N}_2\text{S}_4$, has a crystallographically imposed centre of symmetry located at the mid-point of the N—N single bond. The molecule is essentially planar: the two five-membered rings form a dihedral angle of 0.17 (6)°. The crystal packing exhibits short intermolecular $\text{S} \cdots \text{S}$ contacts of 3.549 (2) Å.

Related literature

For general background, see: Yoshita *et al.* (1983); Moore *et al.*, (1998); Taniguchi *et al.* (2003). For useful properties of related compounds, see: Andreu *et al.*, (2004); Guerin *et al.* (2002). For the synthesis of the starting material, 2-methylthio-1,3-dithiolium iodide, see: Challenger *et al.* (1953).



Experimental

Crystal data

 $\text{C}_6\text{H}_4\text{N}_2\text{S}_4$
 $M_r = 232.35$

 Monoclinic, $P2_1/n$
 $a = 3.9664$ (3) Å

 $b = 10.122$ (6) Å

 $c = 11.301$ (8) Å

 $\beta = 97.39$ (3)°

 $V = 449.9$ (4) Å³
 $Z = 2$

 Mo $K\alpha$ radiation

 $\mu = 0.99$ mm⁻¹
 $T = 291$ (2) K

 $0.09 \times 0.08 \times 0.08$ mm

Data collection

Rigaku R-Axis RAPID

diffractometer

Absorption correction: multi-scan

(ABSCOR; Higashi, 1995)

 $T_{\min} = 0.919$, $T_{\max} = 0.929$

4256 measured reflections

1022 independent reflections

 935 reflections with $I > 2\sigma(I)$
 $R_{\text{int}} = 0.021$

Refinement

 $R[F^2 > 2\sigma(F^2)] = 0.024$
 $wR(F^2) = 0.067$
 $S = 1.07$

1022 reflections

55 parameters

H-atom parameters constrained

 $\Delta\rho_{\max} = 0.46$ e Å⁻³
 $\Delta\rho_{\min} = -0.18$ e Å⁻³
Table 1

Selected interatomic distance (Å).

$\text{S1} \cdots \text{S2}^i$	3.549 (2)
--------------------------------	-----------

 Symmetry code: (i) $x + \frac{1}{2}, -y + \frac{3}{2}, z - \frac{1}{2}$.

Data collection: *RAPID-AUTO* (Rigaku, 1998); cell refinement: *RAPID-AUTO*; data reduction: *CrystalStructure* (Rigaku/MS, 2002); program(s) used to solve structure: *SHELXS97* (Sheldrick, 2008); program(s) used to refine structure: *SHELXL97* (Sheldrick, 2008); molecular graphics: *PLATON* (Spek, 2003); software used to prepare material for publication: *SHELXL97*.

The authors acknowledge financial support from the National Natural Science Foundation of China (grant No. 20662010), the Specialized Research Fund for the Doctoral Programme of Higher Education (grant No. 20060184001) and the Open Project of the State Key Laboratory of Supramolecular Structure and Materials, Jilin University.

Supplementary data and figures for this paper are available from the IUCr electronic archives (Reference: CV2414).

References

- Andreu, R., Garin, J., Lopez, C., Orduna, J. & Levillian, E. (2004). *Tetrahedron Lett.* **45**, 8211–8214.
- Challenger, F., Mason, E. A., Holdsworth, E. C. & Emmott, R. (1953). *J. Chem. Soc.* pp. 292–304.
- Guerin, D., Lorey, D., Carlier, R., Los, S. & Piekara-Sady, L. (2002). *J. Solid State Chem.* **168**, 590–596.
- Higashi, T. (1995). *ABSCOR*. Rigaku Corporation, Tokyo, Japan.
- Moore, A. J., Bryce, M. R., Batsanov, A. S., Green, A., Howard, J. A. K., Mckerver, M. A., McGuigan, P., Ledoux, I., Orti, E., Viruela, R., Viruela, P. M. & Tarbi, B. J. (1998). *J. Mater. Chem.* **8**, 1173–1184.
- Rigaku (1998). *RAPID-AUTO*. Rigaku Corporation, Tokyo, Japan.
- Rigaku/MS (2002). *CrystalStructure*. Rigaku/MS Inc., The Woodlands, Texas, USA.
- Sheldrick, G. M. (2008). *Acta Cryst.* **A64**, 112–122.
- Spek, A. L. (2003). *J. Appl. Cryst.* **36**, 7–13.
- Taniguchi, H., Miyashita, M., Uchiyama, K., Satoh, K., Mori, N., Okamoto, H., Miyagawa, K., Kanoda, K., Hedou, M. & Uwatoko, Y. (2003). *J. Phys. Soc. Jpn.* **72**, 468–471.
- Yoshita, Z., Kawase, T., Awaji, H., Sugimoto, I., Sugimoto, T. & Yoneta, S. (1983). *Tetrahedron Lett.* **24**, 3460–3472.

supporting information

Acta Cryst. (2008). E64, o1217 [doi:10.1107/S160053680801667X]

1,2-Bis(1,3-dithiol-2-ylidene)hydrazine

Hong-ai Li, Chang Su, Bao Li, Tie Chen and Bing-zhu Yin

S1. Comment

Within the field of molecular conductors, tetrathiafulvalene and its π -derivatives have played a leading role in the formation of organic charge-transfer complexes (Yoshita *et al.* 1983; Moore *et al.*, 1998; Taniguchi *et al.* 2003). One of the important strategies for the molecular design is to incorporate the nitrogen atom instead of carbon atoms to the conjugated spacer to modulate electron-donating properties (Andreu *et al.*, 2004; Guerin *et al.*, 2002). As a π -extended tetrathiafulvalene, we synthesized the title compound by incorporation an azino spacer between two 1,3-dithiole units.

The X-ray structure determination reveals that the title complex, (I) (Fig. 1), crystallizes in the monoclinic space group $P2_1/n$ space group. There is a half of the molecule in the asymmetric unit, and the inversion center lies on the mid-point of N—N bond. Two five-membered rings make a dihedral angle of $0.17(6)^\circ$. In the absence of classical hydrogen bonds, the crystal packing exhibits short intermolecular S...S contacts of $3.549(2) \text{ \AA}$.

S2. Experimental

2-Methylthio-1,3-dithiolium iodide (Challenger *et al.*, 1953) (0.15 g, 0.54 mmol) and hydrazine monohydrate (0.13 g, 0.27 mmol) were dissolved in acetic acid (10 ml). The reaction mixture was refluxed for 2 h and then cooled to room temperature. The resulting solution was concentrated *in vacuo*. The yellow solid obtained was subjected to column chromatography (silica gel, dichloromethane) to afford the title compound as a pale yellow solid (0.08 g, 63.8% m.p. 481–483 K). Single crystals suitable for X-ray diffraction were prepared by slow evaporation of an acetone solution at room temperature.

S3. Refinement

H atoms were placed at calculated positions with C—H = 0.93 \AA , and refined as riding, with $U_{\text{iso}}(\text{H}) = 1.2 U_{\text{eq}}(\text{C})$.

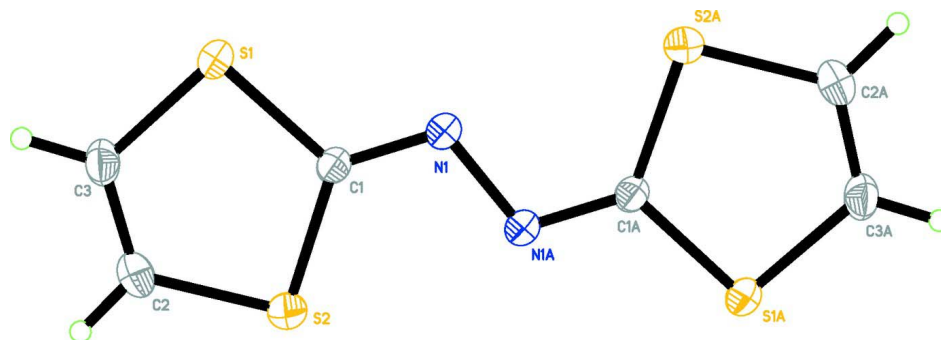


Figure 1

The molecular structure of (I) showing the atom numbering and 30% probability displacement ellipsoids [symmetry code: (A) $2 - x, 1 - y, 1 - z$].

1,2-Bis(1,3-dithiol-2-ylidene)hydrazine*Crystal data*C₆H₄N₂S₄ $M_r = 232.35$ Monoclinic, $P2_1/n$

Hall symbol: -P 2yn

 $a = 3.9664$ (3) Å $b = 10.122$ (6) Å $c = 11.301$ (8) Å $\beta = 97.39$ (3)° $V = 449.9$ (4) Å³ $Z = 2$ $F(000) = 236$ $D_x = 1.715$ Mg m⁻³Mo $K\alpha$ radiation, $\lambda = 0.71073$ Å

Cell parameters from 3828 reflections

 $\theta = 3.6$ – 27.5 ° $\mu = 1.00$ mm⁻¹ $T = 291$ K

Block, yellow

 $0.09 \times 0.08 \times 0.08$ mm*Data collection*

Rigaku R-AXIS RAPID

diffractometer

Radiation source: fine-focus sealed tube

Graphite monochromator

 ω scans

Absorption correction: multi-scan

(ABSCOR; Higashi, 1995)

 $T_{\min} = 0.919$, $T_{\max} = 0.929$

4256 measured reflections

1022 independent reflections

935 reflections with $I > 2\sigma(I)$ $R_{\text{int}} = 0.021$ $\theta_{\text{max}} = 27.5$ °, $\theta_{\text{min}} = 3.6$ ° $h = -4 \rightarrow 5$ $k = -13 \rightarrow 13$ $l = -14 \rightarrow 14$ *Refinement*Refinement on F^2

Least-squares matrix: full

 $R[F^2 > 2\sigma(F^2)] = 0.024$ $wR(F^2) = 0.067$ $S = 1.07$

1022 reflections

55 parameters

0 restraints

Primary atom site location: structure-invariant

direct methods

Secondary atom site location: difference Fourier map

Hydrogen site location: inferred from neighbouring sites

H-atom parameters constrained

 $w = 1/[\sigma^2(F_o^2) + (0.0401P)^2 + 0.0828P]$ where $P = (F_o^2 + 2F_c^2)/3$ $(\Delta/\sigma)_{\text{max}} < 0.001$ $\Delta\rho_{\text{max}} = 0.46$ e Å⁻³ $\Delta\rho_{\text{min}} = -0.18$ e Å⁻³*Special details***Experimental.** (See detailed section in the paper)**Geometry.** All e.s.d.'s (except the e.s.d. in the dihedral angle between two l.s. planes) are estimated using the full covariance matrix. The cell e.s.d.'s are taken into account individually in the estimation of e.s.d.'s in distances, angles and torsion angles; correlations between e.s.d.'s in cell parameters are only used when they are defined by crystal symmetry. An approximate (isotropic) treatment of cell e.s.d.'s is used for estimating e.s.d.'s involving l.s. planes.**Refinement.** Refinement of F^2 against ALL reflections. The weighted R -factor wR and goodness of fit S are based on F^2 , conventional R -factors R are based on F , with F set to zero for negative F^2 . The threshold expression of $F^2 > \sigma(F^2)$ is used only for calculating R -factors(gt) *etc.* and is not relevant to the choice of reflections for refinement. R -factors based on F^2 are statistically about twice as large as those based on F , and R -factors based on ALL data will be even larger.*Fractional atomic coordinates and isotropic or equivalent isotropic displacement parameters (Å²)*

	x	y	z	$U_{\text{iso}}^*/U_{\text{eq}}$
C1	1.0199 (3)	0.62381 (14)	0.40299 (12)	0.0288 (3)
C2	0.9210 (4)	0.87204 (16)	0.36541 (15)	0.0433 (4)
H2	0.8668	0.9607	0.3732	0.052*

C3	1.0268 (5)	0.82730 (15)	0.26661 (14)	0.0410 (4)
H3	1.0495	0.8832	0.2028	0.049*
N1	1.0475 (3)	0.50484 (12)	0.44228 (10)	0.0355 (3)
S1	1.12148 (10)	0.66082 (4)	0.26068 (3)	0.03701 (14)
S2	0.88557 (10)	0.76025 (4)	0.48070 (3)	0.03796 (14)

Atomic displacement parameters (\AA^2)

	U^{11}	U^{22}	U^{33}	U^{12}	U^{13}	U^{23}
C1	0.0330 (7)	0.0293 (6)	0.0243 (6)	-0.0017 (5)	0.0050 (5)	0.0016 (5)
C2	0.0545 (9)	0.0273 (7)	0.0482 (9)	0.0034 (7)	0.0067 (7)	0.0046 (7)
C3	0.0528 (9)	0.0313 (8)	0.0382 (8)	-0.0033 (6)	0.0040 (7)	0.0095 (6)
N1	0.0512 (8)	0.0299 (6)	0.0268 (6)	0.0005 (5)	0.0110 (5)	0.0014 (4)
S1	0.0519 (3)	0.0332 (2)	0.0278 (2)	-0.00120 (15)	0.01239 (16)	0.00342 (13)
S2	0.0487 (3)	0.0337 (2)	0.0333 (2)	0.00350 (15)	0.01252 (17)	-0.00133 (14)

Geometric parameters (\AA , $^\circ$)

C1—N1	1.283 (2)	C2—H2	0.9300
C1—S1	1.7480 (17)	C3—S1	1.7296 (19)
C1—S2	1.7558 (16)	C3—H3	0.9300
C2—C3	1.322 (2)	N1—N1 ⁱ	1.407 (2)
C2—S2	1.7448 (18)		
S1...S2 ⁱⁱ	3.549 (2)		
N1—C1—S1	120.00 (11)	C2—C3—S1	117.41 (12)
N1—C1—S2	125.66 (11)	C2—C3—H3	121.3
S1—C1—S2	114.35 (8)	S1—C3—H3	121.3
C3—C2—S2	118.24 (13)	C1—N1—N1 ⁱ	111.41 (14)
C3—C2—H2	120.9	C3—S1—C1	95.53 (8)
S2—C2—H2	120.9	C2—S2—C1	94.47 (9)

Symmetry codes: (i) $-x+2, -y+1, -z+1$; (ii) $x+1/2, -y+3/2, z-1/2$.