

Acta Crystallographica Section E

## Structure Reports

Online

ISSN 1600-5368

## 2,2'-(Decane-1,10-diyl)dibenzimidazolium dichloride trihydrate

Jun-Ming Yi,<sup>a</sup> Yun-Qian Zhang,<sup>b\*</sup> Sai-Feng Xue<sup>b</sup> and Qian-Jiang Zhu<sup>c</sup>

<sup>a</sup>Center for Research & Development of Fine Chemicals Guizhou University, Guiyang 550025, People's Republic of China, <sup>b</sup>Key Laboratory of Macrocyclic and Supramolecular Chemistry of Guizhou Province, Guizhou University, Guiyang 550025, People's Republic of China, and <sup>c</sup>Institute of Applied Chemistry Guizhou University, Guiyang 550025, People's Republic of China  
Correspondence e-mail: sci.yqzhang@gzu.edu.cn

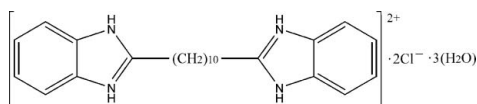
Received 17 February 2008; accepted 6 March 2008

Key indicators: single-crystal X-ray study;  $T = 293$  K; mean  $\sigma(\text{C}-\text{C}) = 0.003$  Å;  $R$  factor = 0.035;  $wR$  factor = 0.089; data-to-parameter ratio = 15.8.

The organic cation in the title compound,  $\text{C}_{24}\text{H}_{32}\text{N}_4^{2+} \cdot 2\text{Cl}^- \cdot 3\text{H}_2\text{O}$ , is situated on an inversion centre. The cations, anions and water molecules are linked *via*  $\text{N}-\text{H} \cdots \text{O}$ ,  $\text{N}-\text{H} \cdots \text{Cl}$ ,  $\text{O}-\text{H} \cdots \text{O}$  and  $\text{O}-\text{H} \cdots \text{Cl}$  hydrogen bonds and  $\text{C}-\text{H} \cdots \pi$  interactions, forming a three-dimensional framework.

## Related literature

For general background, see: Day & Arnold (2000); Day *et al.* (2002); Freeman *et al.* (1981); Kim *et al.* (2000); Wang & Jollie (1957).



## Experimental

## Crystal data

 $\text{C}_{24}\text{H}_{32}\text{N}_4^{2+} \cdot 2\text{Cl}^- \cdot 3\text{H}_2\text{O}$  $M_r = 501.48$ Triclinic,  $P\bar{1}$  $a = 10.8482$  (6) Å $b = 11.5089$  (6) Å $c = 11.9503$  (6) Å $\alpha = 77.619$  (2)° $\beta = 71.501$  (2)° $\gamma = 76.030$  (2)° $V = 1357.58$  (13) Å<sup>3</sup> $Z = 2$ Mo  $K\alpha$  radiation $\mu = 0.27$  mm<sup>-1</sup> $T = 293$  (2) K

0.29 × 0.24 × 0.16 mm

## Data collection

Bruker APEXII CCD area-detector diffractometer

Absorption correction: multi-scan (SADABS; Bruker, 2005)

 $T_{\min} = 0.926$ ,  $T_{\max} = 0.958$ 13250 measured reflections  
4702 independent reflections3802 reflections with  $I > 2\sigma(I)$   
 $R_{\text{int}} = 0.024$ 

## Refinement

 $R[F^2 > 2\sigma(F^2)] = 0.035$  $wR(F^2) = 0.089$  $S = 1.06$ 

4702 reflections

298 parameters

H-atom parameters constrained

 $\Delta\rho_{\text{max}} = 0.22$  e Å<sup>-3</sup> $\Delta\rho_{\text{min}} = -0.18$  e Å<sup>-3</sup>

Table 1

Hydrogen-bond geometry (Å, °).

| $D-\text{H} \cdots A$                                   | $D-\text{H}$ | $\text{H} \cdots A$ | $D \cdots A$ | $D-\text{H} \cdots A$ |
|---|--------------|---------------------|--------------|-----------------------|
| $\text{N1}-\text{H1} \cdots \text{O3W}$                 | 0.86         | 1.88                | 2.7142 (19)  | 162                   |
| $\text{N2}-\text{H2A} \cdots \text{O2W}$                | 0.86         | 1.94                | 2.7500 (19)  | 157                   |
| $\text{N3}-\text{H3A} \cdots \text{O1W}^{\text{i}}$     | 0.86         | 1.88                | 2.7322 (18)  | 173                   |
| $\text{N4}-\text{H4A} \cdots \text{Cl2}$                | 0.86         | 2.25                | 3.0823 (15)  | 163                   |
| $\text{O1W}-\text{H1WA} \cdots \text{Cl1}^{\text{ii}}$  | 0.87         | 2.25                | 3.1027 (13)  | 168                   |
| $\text{O1W}-\text{H1WB} \cdots \text{Cl1}^{\text{iii}}$ | 0.89         | 2.21                | 3.0804 (13)  | 166                   |
| $\text{O2W}-\text{H2WA} \cdots \text{O1W}$              | 0.97         | 1.96                | 2.8763 (18)  | 158                   |
| $\text{O2W}-\text{H2WB} \cdots \text{Cl2}^{\text{iv}}$  | 0.90         | 2.28                | 3.1703 (13)  | 170                   |
| $\text{O3W}-\text{H3WB} \cdots \text{Cl1}$              | 0.93         | 2.20                | 3.0912 (13)  | 162                   |
| $\text{O3W}-\text{H3WA} \cdots \text{Cl2}$              | 0.92         | 2.21                | 3.1229 (13)  | 172                   |
| $\text{C11}-\text{H11B} \cdots \text{Cg2}$              | 0.97         | 3.17                | 3.847 (3)    | 128                   |
| $\text{C22}-\text{H22A} \cdots \text{Cg1}^{\text{v}}$   | 0.97         | 2.92                | 3.863 (3)    | 165                   |

Symmetry codes: (i)  $-x + 1, -y, -z + 1$ ; (ii)  $x + 1, y - 1, z$ ; (iii)  $-x + 1, -y + 1, -z$ ; (iv)  $x + 1, y, z$ ; (v)  $-x + 1, -y + 1, -z + 1$ . Cg1, Cg2 are the centroids of the C1–C6 and C13–C18 benzene rings, respectively.

Data collection: APEX2 (Bruker, 2005); cell refinement: SAINT (Bruker, 2005); data reduction: SAINT; program(s) used to solve structure: SHELXS97 (Sheldrick, 2008); program(s) used to refine structure: SHELXL97 (Sheldrick, 2008); molecular graphics: ORTEP-3 (Farrugia, 1997); software used to prepare material for publication: WinGX (Farrugia, 1999).

We acknowledge the support of the National Natural Science Foundation of China (No. 20662003), the International Collaborative Project of the Ministry of Science and Technology (No. 2007400108) and the Foundation of the Governor of Guizhou Province, China.

Supplementary data and figures for this paper are available from the IUCr electronic archives (Reference: RK2079).

## References

- Bruker (2005). SADABS, SAINT and APEX2. Bruker AXS Inc., Madison, Wisconsin, USA.
- Day, A. I. & Arnold, A. P. (2000). Patent No. WO 2000 068 232.
- Day, A. I., Blanch, R. J., Arnold, A. P., Lorenzo, S., Lewis, G. R. & Dance, I. (2002). *Angew. Chem. Int. Ed. Engl.* **41**, 275–277.
- Farrugia, L. J. (1997). *J. Appl. Cryst.* **30**, 565.
- Farrugia, L. J. (1999). *J. Appl. Cryst.* **32**, 837–838.
- Freeman, W. A., Mock, W. L. & Shih, N. Y. (1981). *J. Am. Chem. Soc.* **103**, 7367–7370.
- Kim, J., Jung, I. S., Kim, S.-Y., Lee, E., Kang, J.-K., Sakamoto, S., Yamaguchi, K. & Kim, K. (2000). *J. Am. Chem. Soc.* **122**, 540–541.
- Sheldrick, G. M. (2008). *Acta Cryst.* **A64**, 112–122.
- Wang, L. L. Y. & Jollie, M. M. (1957). *J. Am. Chem. Soc.* **79**, 5706–5708.

## supporting information

*Acta Cryst.* (2008). E64, o696 [doi:10.1107/S160053680800617X]

## 2,2'-(Decane-1,10-diyl)dibenzimidazolium dichloride trihydrate

Jun-Ming Yi, Yun-Qian Zhang, Sai-Feng Xue and Qian-Jiang Zhu

### S1. Comment

We prepared and present a new 'axle' polyaromatic compound (**I**) containing multiple functional groups that can develop strong intermolecular interactions with cucurbit[*n*]urils (*CB[n]*) (Freeman *et al.*, 1981; Day & Arnold, 2000; Day *et al.*, 2002; Kim *et al.*, 2000).

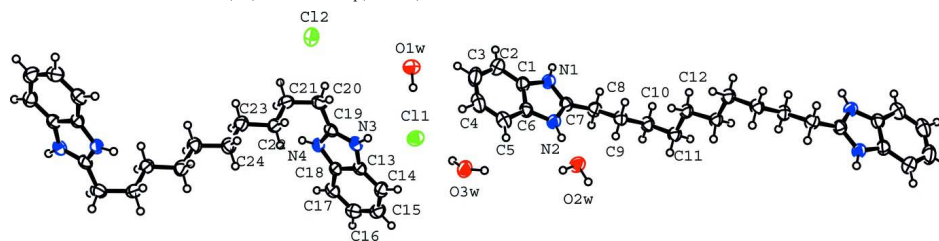
The structure of **I**,  $[\text{C}_{24}\text{H}_{32}\text{N}_4]^{2+} \cdot 2\text{Cl}^- \cdot 3(\text{H}_2\text{O})$ , contains two independent molecules, which occupy the center of symmetry positions in the middle of C12–C12<sup>i</sup> and C24–C24<sup>ii</sup> bonds, respectively (symmetry codes: (i)  $-x + 2, -y + 3, -z$ , (ii)  $-x, -y, -z + 2$ ). The angle between the plane of the phenyl rings and the plane through C10, C11, C12, C12<sup>i</sup>, C11<sup>i</sup>, C10<sup>i</sup> chain is 86.74 (9) Å, and the plane through C22, C23, C24, C24<sup>ii</sup>, C23<sup>ii</sup>, C22<sup>ii</sup> chain is 89.26 (10) Å. The cations, anions and water molecules are linked *via* N–H⋯O, N–H⋯Cl, O–H⋯O, O–H⋯Cl hydrogen bonds and C–H⋯π interactions forming three-dimensional framework (see table, *Cg1*, *Cg2* are the centroid of the C1/C6–benzene ring and C13/C18–benzene ring, respectively).

### S2. Experimental

A solution of *o*-phenylenedimine (5.40 g, 0.05 mol) and 1,10–decanedicarboxylic acid (5.80 g, 0.025 mol) were reflux for 12 h in 70 ml of 4M HCl, the reaction mixture was cooled for one day and the crystals of **I** was removed by filtration and dried. The crystals of the title compound suitable for *X*-ray diffraction were obtained by dissolving in water and standing at room temperature after several days (Wang & Joullie, 1957). Yield: 25%.

### S3. Refinement

Water H atoms were located in a difference Fourier synthesis and refined in their as-found positions relative to O atoms with  $U_{\text{iso}}(\text{H}) = 1.2U_{\text{eq}}(\text{O})$ . All other H atoms were placed in calculated positions and refined as riding, with C–H = 0.93–0.97 Å, N–H = 0.86 Å and with  $U_{\text{iso}}(\text{H}) = 1.2U_{\text{eq}}(\text{C}, \text{N})$ .



**Figure 1**

The molecular structure of **I** with the atom numbering scheme. Displacement ellipsoids are drawn at 50% probability level. H atoms are presented as a small spheres of arbitrary radius.

## 2,2'-(Decane-1,10-diyl)dibenzimidazolium dichloride trihydrate

## Crystal data

C<sub>24</sub>H<sub>32</sub>N<sub>4</sub><sup>2+</sup>·2Cl<sup>-</sup>·3H<sub>2</sub>O $M_r = 501.48$ Triclinic,  $P\bar{1}$ 

Hall symbol: -P 1

 $a = 10.8482$  (6) Å $b = 11.5089$  (6) Å $c = 11.9503$  (6) Å $\alpha = 77.619$  (2)° $\beta = 71.501$  (2)° $\gamma = 76.030$  (2)° $V = 1357.58$  (13) Å<sup>3</sup> $Z = 2$  $F(000) = 536$  $D_x = 1.227$  Mg m<sup>-3</sup>Mo  $K\alpha$  radiation,  $\lambda = 0.71073$  Å

Cell parameters from 13250 reflections

 $\theta = 1.8$ – $25.0$ ° $\mu = 0.27$  mm<sup>-1</sup> $T = 293$  K

Prism, colourless

 $0.29 \times 0.24 \times 0.16$  mm

## Data collection

Bruker APEXII CCD area-detector  
diffractometer

Radiation source: Fine-focus sealed tube

Graphite monochromator

 $\varphi$  and  $\omega$  scans

Absorption correction: multi-scan

(SADABS; Bruker, 2005)

 $T_{\min} = 0.926$ ,  $T_{\max} = 0.958$ 

13250 measured reflections

4702 independent reflections

3802 reflections with  $I > 2\sigma(I)$  $R_{\text{int}} = 0.024$  $\theta_{\max} = 25.0$ °,  $\theta_{\min} = 1.8$ ° $h = -12 \rightarrow 12$  $k = -12 \rightarrow 13$  $l = -11 \rightarrow 14$ 

## Refinement

Refinement on  $F^2$ 

Least-squares matrix: Full

 $R[F^2 > 2\sigma(F^2)] = 0.035$  $wR(F^2) = 0.089$  $S = 1.06$ 

4702 reflections

298 parameters

0 restraints

Primary atom site location: Direct

Secondary atom site location: Difmap

Hydrogen site location: Geom

H-atom parameters constrained

 $w = 1/[\sigma^2(F_o^2) + (0.0377P)^2 + 0.299P]$ where  $P = (F_o^2 + 2F_c^2)/3$  $(\Delta/\sigma)_{\max} < 0.001$  $\Delta\rho_{\max} = 0.22$  e Å<sup>-3</sup> $\Delta\rho_{\min} = -0.18$  e Å<sup>-3</sup>

## Special details

**Geometry.** All s.u.'s (except the s.u. in the dihedral angle between two l.s. planes) are estimated using the full covariance matrix. The cell s.u.'s are taken into account individually in the estimation of s.u.'s in distances, angles and torsion angles; correlations between s.u.'s in cell parameters are only used when they are defined by crystal symmetry. An approximate (isotropic) treatment of cell s.u.'s is used for estimating s.u.'s involving l.s. planes.

**Refinement.** Refinement of  $F^2$  against ALL reflections. The weighted  $R$ -factor  $wR$  and goodness of fit  $S$  are based on  $F^2$ , conventional  $R$ -factors  $R$  are based on  $F$ , with  $F$  set to zero for negative  $F^2$ . The threshold expression of  $F^2 > 2\sigma(F^2)$  is used only for calculating  $R$ -factors(gt) etc. and is not relevant to the choice of reflections for refinement.  $R$ -factors based on  $F^2$  are statistically about twice as large as those based on  $F$ , and  $RR$ -factors based on ALL data will be even larger.

Fractional atomic coordinates and isotropic or equivalent isotropic displacement parameters (Å<sup>2</sup>)

|    | $x$          | $y$          | $z$          | $U_{\text{iso}}^*/U_{\text{eq}}$ |
|----|--------------|--------------|--------------|----------------------------------|
| C1 | 0.64008 (18) | 0.65504 (16) | 0.11143 (15) | 0.0407 (4)                       |
| C2 | 0.6254 (2)   | 0.78026 (18) | 0.09401 (19) | 0.0572 (5)                       |
| H2 | 0.5447       | 0.8308       | 0.0923       | 0.069*                           |
| C3 | 0.7371 (2)   | 0.8257 (2)   | 0.07942 (19) | 0.0624 (6)                       |

---

|      |              |               |              |            |
|------|--------------|---------------|--------------|------------|
| H3   | 0.7317       | 0.9091        | 0.0668       | 0.075*     |
| C4   | 0.8579 (2)   | 0.7500 (2)    | 0.08310 (17) | 0.0570 (6) |
| H4   | 0.9307       | 0.7845        | 0.0729       | 0.068*     |
| C5   | 0.87257 (19) | 0.62624 (19)  | 0.10132 (16) | 0.0487 (5) |
| H5   | 0.9530       | 0.5759        | 0.1043       | 0.058*     |
| C6   | 0.76037 (17) | 0.58019 (16)  | 0.11513 (15) | 0.0387 (4) |
| C7   | 0.61491 (17) | 0.46486 (15)  | 0.13702 (15) | 0.0364 (4) |
| C8   | 0.55400 (18) | 0.35944 (16)  | 0.14626 (17) | 0.0418 (4) |
| H8A  | 0.5851       | 0.3315        | 0.0693       | 0.050*     |
| H8B  | 0.4589       | 0.3864        | 0.1634       | 0.050*     |
| C9   | 0.58230 (18) | 0.25312 (15)  | 0.24031 (15) | 0.0392 (4) |
| H9A  | 0.5473       | 0.2783        | 0.3186       | 0.047*     |
| H9B  | 0.6772       | 0.2260        | 0.2255       | 0.047*     |
| C10  | 0.51925 (18) | 0.14950 (16)  | 0.23773 (16) | 0.0409 (4) |
| H10A | 0.4243       | 0.1771        | 0.2548       | 0.049*     |
| H10B | 0.5514       | 0.1281        | 0.1579       | 0.049*     |
| C11  | 0.54728 (18) | 0.03713 (16)  | 0.32589 (16) | 0.0415 (4) |
| H11A | 0.6422       | 0.0092        | 0.3085       | 0.050*     |
| H11B | 0.5093       | -0.0263       | 0.3148       | 0.050*     |
| C12  | 0.49251 (16) | 0.05731 (15)  | 0.45552 (15) | 0.0384 (4) |
| H12A | 0.5374       | 0.1144        | 0.4686       | 0.046*     |
| H12B | 0.3994       | 0.0935        | 0.4705       | 0.046*     |
| C13  | 0.16012 (15) | -0.00823 (15) | 0.50147 (15) | 0.0340 (4) |
| C14  | 0.19499 (17) | -0.13242 (16) | 0.50035 (18) | 0.0430 (4) |
| H14  | 0.1875       | -0.1877       | 0.5703       | 0.052*     |
| C15  | 0.24119 (18) | -0.16880 (18) | 0.38967 (19) | 0.0484 (5) |
| H15  | 0.2662       | -0.2511       | 0.3848       | 0.058*     |
| C16  | 0.25169 (17) | -0.08601 (18) | 0.28440 (18) | 0.0463 (5) |
| H16  | 0.2826       | -0.1148       | 0.2116       | 0.056*     |
| C17  | 0.21752 (16) | 0.03697 (17)  | 0.28543 (16) | 0.0405 (4) |
| H17  | 0.2246       | 0.0921        | 0.2153       | 0.049*     |
| C18  | 0.17194 (15) | 0.07423 (15)  | 0.39687 (15) | 0.0329 (4) |
| C19  | 0.09620 (15) | 0.17706 (16)  | 0.55014 (15) | 0.0353 (4) |
| C20  | 0.04445 (17) | 0.27781 (17)  | 0.62225 (17) | 0.0454 (5) |
| H20A | 0.0525       | 0.2469        | 0.7023       | 0.055*     |
| H20B | -0.0489      | 0.3056        | 0.6283       | 0.055*     |
| C21  | 0.11453 (17) | 0.38577 (16)  | 0.57205 (17) | 0.0436 (4) |
| H21A | 0.1086       | 0.4154        | 0.4912       | 0.052*     |
| H21B | 0.0685       | 0.4502        | 0.6194       | 0.052*     |
| C22  | 0.25918 (16) | 0.35777 (15)  | 0.57035 (17) | 0.0398 (4) |
| H22A | 0.2659       | 0.3266        | 0.6507       | 0.048*     |
| H22B | 0.3064       | 0.2952        | 0.5210       | 0.048*     |
| C23  | 0.32401 (18) | 0.46815 (16)  | 0.52292 (18) | 0.0463 (5) |
| H23A | 0.2725       | 0.5324        | 0.5688       | 0.056*     |
| H23B | 0.3220       | 0.4959        | 0.4408       | 0.056*     |
| C24  | 0.46640 (18) | 0.44573 (17)  | 0.52768 (17) | 0.0453 (5) |
| H24A | 0.4678       | 0.4235        | 0.6103       | 0.054*     |
| H24B | 0.5167       | 0.3778        | 0.4864       | 0.054*     |

|      |              |              |              |              |
|------|--------------|--------------|--------------|--------------|
| Cl1  | 0.18425 (5)  | 0.85742 (4)  | 0.02569 (4)  | 0.04826 (14) |
| Cl2  | 0.16011 (5)  | 0.39667 (4)  | 0.21933 (4)  | 0.05033 (15) |
| N1   | 0.55187 (14) | 0.57926 (12) | 0.12641 (13) | 0.0397 (4)   |
| H1   | 0.4698       | 0.6027       | 0.1285       | 0.048*       |
| N2   | 0.73979 (14) | 0.46237 (13) | 0.13165 (13) | 0.0400 (4)   |
| H2A  | 0.7986       | 0.3979       | 0.1375       | 0.048*       |
| N3   | 0.11251 (13) | 0.06012 (13) | 0.59441 (12) | 0.0362 (3)   |
| H3A  | 0.0962       | 0.0311       | 0.6691       | 0.043*       |
| N4   | 0.13153 (13) | 0.18871 (12) | 0.43127 (12) | 0.0355 (3)   |
| H4A  | 0.1296       | 0.2562       | 0.3835       | 0.043*       |
| O1W  | 0.95820 (12) | 0.03649 (11) | 0.16974 (10) | 0.0452 (3)   |
| H1WA | 1.0290       | -0.0060      | 0.1285       | 0.054*       |
| H1WB | 0.9039       | 0.0643       | 0.1235       | 0.054*       |
| O3W  | 0.28364 (12) | 0.62540 (11) | 0.18261 (12) | 0.0529 (4)   |
| H3WA | 0.2395       | 0.5627       | 0.1963       | 0.063*       |
| H3WB | 0.2443       | 0.6840       | 0.1315       | 0.063*       |
| O2W  | 0.92820 (12) | 0.28229 (11) | 0.20533 (12) | 0.0494 (3)   |
| H2WA | 0.9616       | 0.2021       | 0.1829       | 0.059*       |
| H2WB | 0.9970       | 0.3157       | 0.1996       | 0.059*       |

*Atomic displacement parameters (Å<sup>2</sup>)*

|     | $U^{11}$    | $U^{22}$    | $U^{33}$    | $U^{12}$     | $U^{13}$     | $U^{23}$     |
|-----|-------------|-------------|-------------|--------------|--------------|--------------|
| C1  | 0.0453 (10) | 0.0372 (10) | 0.0372 (10) | -0.0113 (8)  | -0.0083 (8)  | -0.0014 (8)  |
| C2  | 0.0637 (13) | 0.0390 (12) | 0.0617 (14) | -0.0091 (10) | -0.0123 (11) | -0.0012 (10) |
| C3  | 0.0850 (17) | 0.0438 (12) | 0.0578 (14) | -0.0296 (12) | -0.0094 (12) | -0.0023 (10) |
| C4  | 0.0653 (14) | 0.0640 (14) | 0.0463 (12) | -0.0362 (12) | -0.0062 (10) | -0.0053 (10) |
| C5  | 0.0473 (11) | 0.0588 (13) | 0.0423 (11) | -0.0208 (10) | -0.0090 (9)  | -0.0059 (9)  |
| C6  | 0.0433 (10) | 0.0390 (10) | 0.0324 (10) | -0.0116 (8)  | -0.0085 (8)  | -0.0016 (8)  |
| C7  | 0.0371 (9)  | 0.0377 (10) | 0.0343 (10) | -0.0082 (8)  | -0.0114 (8)  | -0.0013 (7)  |
| C8  | 0.0403 (10) | 0.0391 (10) | 0.0481 (11) | -0.0069 (8)  | -0.0169 (8)  | -0.0044 (8)  |
| C9  | 0.0433 (10) | 0.0389 (10) | 0.0368 (10) | -0.0119 (8)  | -0.0108 (8)  | -0.0044 (8)  |
| C10 | 0.0404 (10) | 0.0415 (10) | 0.0437 (11) | -0.0131 (8)  | -0.0119 (8)  | -0.0062 (8)  |
| C11 | 0.0398 (10) | 0.0373 (10) | 0.0492 (11) | -0.0105 (8)  | -0.0119 (8)  | -0.0079 (8)  |
| C12 | 0.0334 (9)  | 0.0320 (9)  | 0.0507 (11) | -0.0080 (8)  | -0.0123 (8)  | -0.0050 (8)  |
| C13 | 0.0280 (8)  | 0.0401 (10) | 0.0370 (10) | -0.0090 (7)  | -0.0113 (7)  | -0.0061 (8)  |
| C14 | 0.0382 (10) | 0.0393 (11) | 0.0549 (12) | -0.0098 (8)  | -0.0197 (9)  | -0.0012 (9)  |
| C15 | 0.0408 (10) | 0.0416 (11) | 0.0704 (14) | -0.0061 (9)  | -0.0215 (10) | -0.0174 (10) |
| C16 | 0.0375 (10) | 0.0571 (13) | 0.0533 (12) | -0.0097 (9)  | -0.0144 (9)  | -0.0235 (10) |
| C17 | 0.0351 (9)  | 0.0524 (12) | 0.0382 (10) | -0.0133 (8)  | -0.0123 (8)  | -0.0068 (8)  |
| C18 | 0.0266 (8)  | 0.0361 (10) | 0.0392 (10) | -0.0091 (7)  | -0.0113 (7)  | -0.0058 (8)  |
| C19 | 0.0247 (8)  | 0.0436 (11) | 0.0397 (10) | -0.0099 (7)  | -0.0085 (7)  | -0.0080 (8)  |
| C20 | 0.0326 (9)  | 0.0541 (12) | 0.0511 (12) | -0.0083 (8)  | -0.0063 (8)  | -0.0192 (9)  |
| C21 | 0.0388 (10) | 0.0386 (10) | 0.0543 (12) | -0.0002 (8)  | -0.0137 (9)  | -0.0163 (9)  |
| C22 | 0.0382 (10) | 0.0346 (10) | 0.0471 (11) | -0.0055 (8)  | -0.0121 (8)  | -0.0087 (8)  |
| C23 | 0.0490 (11) | 0.0386 (11) | 0.0537 (12) | -0.0111 (9)  | -0.0149 (9)  | -0.0084 (9)  |
| C24 | 0.0477 (11) | 0.0462 (11) | 0.0463 (11) | -0.0153 (9)  | -0.0126 (9)  | -0.0093 (9)  |
| Cl1 | 0.0498 (3)  | 0.0453 (3)  | 0.0464 (3)  | 0.0017 (2)   | -0.0178 (2)  | -0.0055 (2)  |

|     |            |            |             |             |             |             |
|-----|------------|------------|-------------|-------------|-------------|-------------|
| C12 | 0.0542 (3) | 0.0429 (3) | 0.0557 (3)  | -0.0152 (2) | -0.0192 (2) | 0.0017 (2)  |
| N1  | 0.0358 (8) | 0.0348 (9) | 0.0464 (9)  | -0.0034 (7) | -0.0143 (7) | -0.0009 (7) |
| N2  | 0.0367 (8) | 0.0351 (8) | 0.0469 (9)  | -0.0047 (6) | -0.0129 (7) | -0.0037 (7) |
| N3  | 0.0331 (8) | 0.0430 (9) | 0.0337 (8)  | -0.0114 (6) | -0.0105 (6) | -0.0015 (7) |
| N4  | 0.0336 (7) | 0.0336 (8) | 0.0386 (9)  | -0.0086 (6) | -0.0103 (6) | -0.0012 (6) |
| O1W | 0.0441 (7) | 0.0501 (8) | 0.0374 (7)  | 0.0007 (6)  | -0.0125 (6) | -0.0075 (6) |
| O3W | 0.0435 (7) | 0.0373 (7) | 0.0740 (10) | -0.0072 (6) | -0.0192 (7) | 0.0034 (6)  |
| O2W | 0.0416 (7) | 0.0412 (7) | 0.0683 (9)  | -0.0058 (6) | -0.0202 (6) | -0.0092 (6) |

*Geometric parameters (Å, °)*

|                      |             |                       |           |
|----------------------|-------------|-----------------------|-----------|
| C1—C6                | 1.387 (3)   | C15—C16               | 1.397 (3) |
| C1—C2                | 1.388 (3)   | C15—H15               | 0.9300    |
| C1—N1                | 1.391 (2)   | C16—C17               | 1.376 (3) |
| C2—C3                | 1.380 (3)   | C16—H16               | 0.9300    |
| C2—H2                | 0.9300      | C17—C18               | 1.388 (2) |
| C3—C4                | 1.396 (3)   | C17—H17               | 0.9300    |
| C3—H3                | 0.9300      | C18—N4                | 1.391 (2) |
| C4—C5                | 1.372 (3)   | C19—N3                | 1.327 (2) |
| C4—H4                | 0.9300      | C19—N4                | 1.334 (2) |
| C5—C6                | 1.392 (2)   | C19—C20               | 1.486 (2) |
| C5—H5                | 0.9300      | C20—C21               | 1.526 (2) |
| C6—N2                | 1.390 (2)   | C20—H20A              | 0.9700    |
| C7—N1                | 1.329 (2)   | C20—H20B              | 0.9700    |
| C7—N2                | 1.329 (2)   | C21—C22               | 1.518 (2) |
| C7—C8                | 1.485 (2)   | C21—H21A              | 0.9700    |
| C8—C9                | 1.517 (2)   | C21—H21B              | 0.9700    |
| C8—H8A               | 0.9700      | C22—C23               | 1.516 (2) |
| C8—H8B               | 0.9700      | C22—H22A              | 0.9700    |
| C9—C10               | 1.521 (2)   | C22—H22B              | 0.9700    |
| C9—H9A               | 0.9700      | C23—C24               | 1.521 (3) |
| C9—H9B               | 0.9700      | C23—H23A              | 0.9700    |
| C10—C11              | 1.518 (2)   | C23—H23B              | 0.9700    |
| C10—H10A             | 0.9700      | C24—C24 <sup>ii</sup> | 1.520 (3) |
| C10—H10B             | 0.9700      | C24—H24A              | 0.9700    |
| C11—C12              | 1.520 (2)   | C24—H24B              | 0.9700    |
| C11—H11A             | 0.9700      | N1—H1                 | 0.8600    |
| C11—H11B             | 0.9700      | N2—H2A                | 0.8600    |
| C12—C12 <sup>i</sup> | 1.517 (3)   | N3—H3A                | 0.8600    |
| C12—H12A             | 0.9700      | N4—H4A                | 0.8600    |
| C12—H12B             | 0.9700      | O1W—H1WA              | 0.8680    |
| C13—C18              | 1.388 (2)   | O1W—H1WB              | 0.8916    |
| C13—C14              | 1.389 (2)   | O3W—H3WA              | 0.9188    |
| C13—N3               | 1.390 (2)   | O3W—H3WB              | 0.9275    |
| C14—C15              | 1.375 (3)   | O2W—H2WA              | 0.9681    |
| C14—H14              | 0.9300      | O2W—H2WB              | 0.8971    |
| C6—C1—C2             | 121.54 (18) | C16—C15—H15           | 119.0     |

|                            |             |                             |             |
|----------------------------|-------------|-----------------------------|-------------|
| C6—C1—N1                   | 106.43 (15) | C17—C16—C15                 | 121.84 (18) |
| C2—C1—N1                   | 132.02 (18) | C17—C16—H16                 | 119.1       |
| C3—C2—C1                   | 116.3 (2)   | C15—C16—H16                 | 119.1       |
| C3—C2—H2                   | 121.8       | C16—C17—C18                 | 116.30 (17) |
| C1—C2—H2                   | 121.8       | C16—C17—H17                 | 121.8       |
| C2—C3—C4                   | 121.9 (2)   | C18—C17—H17                 | 121.8       |
| C2—C3—H3                   | 119.0       | C17—C18—C13                 | 121.77 (16) |
| C4—C3—H3                   | 119.0       | C17—C18—N4                  | 131.94 (16) |
| C5—C4—C3                   | 121.93 (19) | C13—C18—N4                  | 106.29 (14) |
| C5—C4—H4                   | 119.0       | N3—C19—N4                   | 108.88 (15) |
| C3—C4—H4                   | 119.0       | N3—C19—C20                  | 125.13 (16) |
| C4—C5—C6                   | 116.28 (19) | N4—C19—C20                  | 125.99 (16) |
| C4—C5—H5                   | 121.9       | C19—C20—C21                 | 114.39 (15) |
| C6—C5—H5                   | 121.9       | C19—C20—H20A                | 108.7       |
| C1—C6—N2                   | 106.09 (15) | C21—C20—H20A                | 108.7       |
| C1—C6—C5                   | 121.99 (17) | C19—C20—H20B                | 108.7       |
| N2—C6—C5                   | 131.91 (17) | C21—C20—H20B                | 108.7       |
| N1—C7—N2                   | 109.12 (15) | H20A—C20—H20B               | 107.6       |
| N1—C7—C8                   | 123.98 (15) | C22—C21—C20                 | 114.17 (15) |
| N2—C7—C8                   | 126.82 (16) | C22—C21—H21A                | 108.7       |
| C7—C8—C9                   | 115.36 (15) | C20—C21—H21A                | 108.7       |
| C7—C8—H8A                  | 108.4       | C22—C21—H21B                | 108.7       |
| C9—C8—H8A                  | 108.4       | C20—C21—H21B                | 108.7       |
| C7—C8—H8B                  | 108.4       | H21A—C21—H21B               | 107.6       |
| C9—C8—H8B                  | 108.4       | C23—C22—C21                 | 112.45 (15) |
| H8A—C8—H8B                 | 107.5       | C23—C22—H22A                | 109.1       |
| C8—C9—C10                  | 110.33 (14) | C21—C22—H22A                | 109.1       |
| C8—C9—H9A                  | 109.6       | C23—C22—H22B                | 109.1       |
| C10—C9—H9A                 | 109.6       | C21—C22—H22B                | 109.1       |
| C8—C9—H9B                  | 109.6       | H22A—C22—H22B               | 107.8       |
| C10—C9—H9B                 | 109.6       | C22—C23—C24                 | 114.00 (16) |
| H9A—C9—H9B                 | 108.1       | C22—C23—H23A                | 108.8       |
| C11—C10—C9                 | 113.90 (14) | C24—C23—H23A                | 108.8       |
| C11—C10—H10A               | 108.8       | C22—C23—H23B                | 108.8       |
| C9—C10—H10A                | 108.8       | C24—C23—H23B                | 108.8       |
| C11—C10—H10B               | 108.8       | H23A—C23—H23B               | 107.6       |
| C9—C10—H10B                | 108.8       | C24 <sup>ii</sup> —C24—C23  | 113.7 (2)   |
| H10A—C10—H10B              | 107.7       | C24 <sup>ii</sup> —C24—H24A | 108.8       |
| C10—C11—C12                | 113.70 (15) | C23—C24—H24A                | 108.8       |
| C10—C11—H11A               | 108.8       | C24 <sup>ii</sup> —C24—H24B | 108.8       |
| C12—C11—H11A               | 108.8       | C23—C24—H24B                | 108.8       |
| C10—C11—H11B               | 108.8       | H24A—C24—H24B               | 107.7       |
| C12—C11—H11B               | 108.8       | C7—N1—C1                    | 109.03 (14) |
| H11A—C11—H11B              | 107.7       | C7—N1—H1                    | 125.5       |
| C12 <sup>i</sup> —C12—C11  | 113.96 (18) | C1—N1—H1                    | 125.5       |
| C12 <sup>i</sup> —C12—H12A | 108.8       | C7—N2—C6                    | 109.33 (15) |
| C11—C12—H12A               | 108.8       | C7—N2—H2A                   | 125.3       |
| C12 <sup>i</sup> —C12—H12B | 108.8       | C6—N2—H2A                   | 125.3       |

|                              |              |                               |              |
|------------------------------|--------------|-------------------------------|--------------|
| C11—C12—H12B                 | 108.8        | C19—N3—C13                    | 109.52 (14)  |
| H12A—C12—H12B                | 107.7        | C19—N3—H3A                    | 125.2        |
| C18—C13—C14                  | 121.89 (16)  | C13—N3—H3A                    | 125.2        |
| C18—C13—N3                   | 106.14 (14)  | C19—N4—C18                    | 109.17 (14)  |
| C14—C13—N3                   | 131.96 (16)  | C19—N4—H4A                    | 125.4        |
| C15—C14—C13                  | 116.09 (17)  | C18—N4—H4A                    | 125.4        |
| C15—C14—H14                  | 122.0        | H1WA—O1W—H1WB                 | 107.0        |
| C13—C14—H14                  | 122.0        | H3WA—O3W—H3WB                 | 103.3        |
| C14—C15—C16                  | 122.10 (18)  | H2WA—O2W—H2WB                 | 108.7        |
| C14—C15—H15                  | 119.0        |                               |              |
|                              |              |                               |              |
| C6—C1—C2—C3                  | 0.7 (3)      | N3—C13—C18—C17                | 179.89 (14)  |
| N1—C1—C2—C3                  | -178.45 (19) | C14—C13—C18—N4                | -178.69 (14) |
| C1—C2—C3—C4                  | -0.6 (3)     | N3—C13—C18—N4                 | 0.28 (16)    |
| C2—C3—C4—C5                  | 0.1 (3)      | N3—C19—C20—C21                | 140.24 (17)  |
| C3—C4—C5—C6                  | 0.4 (3)      | N4—C19—C20—C21                | -41.0 (2)    |
| C2—C1—C6—N2                  | -179.04 (17) | C19—C20—C21—C22               | -64.7 (2)    |
| N1—C1—C6—N2                  | 0.27 (19)    | C20—C21—C22—C23               | -178.49 (16) |
| C2—C1—C6—C5                  | -0.2 (3)     | C21—C22—C23—C24               | 176.07 (16)  |
| N1—C1—C6—C5                  | 179.12 (16)  | C22—C23—C24—C24 <sup>ii</sup> | 176.07 (19)  |
| C4—C5—C6—C1                  | -0.4 (3)     | N2—C7—N1—C1                   | 1.0 (2)      |
| C4—C5—C6—N2                  | 178.15 (18)  | C8—C7—N1—C1                   | -175.79 (16) |
| N1—C7—C8—C9                  | -136.00 (18) | C6—C1—N1—C7                   | -0.79 (19)   |
| N2—C7—C8—C9                  | 47.8 (2)     | C2—C1—N1—C7                   | 178.4 (2)    |
| C7—C8—C9—C10                 | -177.80 (16) | N1—C7—N2—C6                   | -0.9 (2)     |
| C8—C9—C10—C11                | 177.68 (15)  | C8—C7—N2—C6                   | 175.85 (16)  |
| C9—C10—C11—C12               | 62.6 (2)     | C1—C6—N2—C7                   | 0.35 (19)    |
| C10—C11—C12—C12 <sup>i</sup> | 173.94 (17)  | C5—C6—N2—C7                   | -178.35 (19) |
| C18—C13—C14—C15              | -0.3 (2)     | N4—C19—N3—C13                 | -0.13 (17)   |
| N3—C13—C14—C15               | -178.99 (16) | C20—C19—N3—C13                | 178.79 (15)  |
| C13—C14—C15—C16              | -0.4 (3)     | C18—C13—N3—C19                | -0.10 (17)   |
| C14—C15—C16—C17              | 0.6 (3)      | C14—C13—N3—C19                | 178.73 (17)  |
| C15—C16—C17—C18              | -0.1 (2)     | N3—C19—N4—C18                 | 0.31 (17)    |
| C16—C17—C18—C13              | -0.7 (2)     | C20—C19—N4—C18                | -178.60 (15) |
| C16—C17—C18—N4               | 178.80 (16)  | C17—C18—N4—C19                | -179.93 (17) |
| C14—C13—C18—C17              | 0.9 (2)      | C13—C18—N4—C19                | -0.37 (17)   |

Symmetry codes: (i)  $-x+1, -y, -z+1$ ; (ii)  $-x+1, -y+1, -z+1$ .

Hydrogen-bond geometry ( $\text{\AA}, ^\circ$ )

| <i>D</i> —H $\cdots$ <i>A</i>                         | <i>D</i> —H | H $\cdots$ <i>A</i> | <i>D</i> $\cdots$ <i>A</i> | <i>D</i> —H $\cdots$ <i>A</i> |
|---|-------------|---------------------|----------------------------|-------------------------------|
| N1—H1 $\cdots$ O3 <i>W</i>                            | 0.86        | 1.88                | 2.7142 (19)                | 162                           |
| N2—H2 <i>A</i> $\cdots$ O2 <i>W</i>                   | 0.86        | 1.94                | 2.7500 (19)                | 157                           |
| N3—H3 <i>A</i> $\cdots$ O1 <i>W</i> <sup>i</sup>      | 0.86        | 1.88                | 2.7322 (18)                | 173                           |
| N4—H4 <i>A</i> $\cdots$ C12                           | 0.86        | 2.25                | 3.0823 (15)                | 163                           |
| O1 <i>W</i> —H1 <i>WA</i> $\cdots$ C11 <sup>iii</sup> | 0.87        | 2.25                | 3.1027 (13)                | 168                           |
| O1 <i>W</i> —H1 <i>WB</i> $\cdots$ C11 <sup>iv</sup>  | 0.89        | 2.21                | 3.0804 (13)                | 166                           |



---

|  |      |      |             |     |
|--|------|------|-------------|-----|
| O2 <i>W</i> —H2 <i>WA</i> ···O1 <i>W</i>       | 0.97 | 1.96 | 2.8763 (18) | 158 |
| O2 <i>W</i> —H2 <i>WB</i> ···C12 <sup>v</sup>  | 0.90 | 2.28 | 3.1703 (13) | 170 |
| O3 <i>W</i> —H3 <i>WB</i> ···C11               | 0.93 | 2.20 | 3.0912 (13) | 162 |
| O3 <i>W</i> —H3 <i>WA</i> ···C12               | 0.92 | 2.21 | 3.1229 (13) | 172 |
| C11—H11 <i>B</i> ···C <i>g</i> 2               | 0.97 | 3.17 | 3.847 (3)   | 128 |
| C22—H22 <i>A</i> ···C <i>g</i> 1 <sup>ii</sup> | 0.97 | 2.92 | 3.863 (3)   | 165 |

---

Symmetry codes: (i)  $-x+1, -y, -z+1$ ; (ii)  $-x+1, -y+1, -z+1$ ; (iii)  $x+1, y-1, z$ ; (iv)  $-x+1, -y+1, -z$ ; (v)  $x+1, y, z$ .