

Acta Crystallographica Section E

Structure Reports

Online

ISSN 1600-5368

Hexaaquamanganese(II) dipicrate dihydrate

Changying Liu,^a Xiufang Shi,^{b*} Bin Du,^b Chunli Wu^b and Mingjie Zhang^a

^aDepartment of Chemistry, Tianjin University, Tianjin 300072, People's Republic of China, and ^bCollege of Pharmacy, Zhengzhou University, Zhengzhou 450001, People's Republic of China

Correspondence e-mail: xiufangshi@yahoo.com.cn

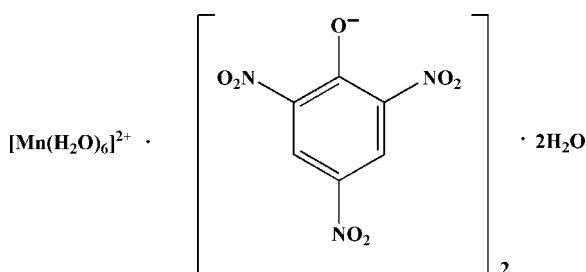
Received 26 October 2007; accepted 29 November 2007

Key indicators: single-crystal X-ray study; $T = 294$ K; mean $\sigma(\text{C}-\text{C}) = 0.005$ Å; R factor = 0.047; wR factor = 0.158; data-to-parameter ratio = 10.1.

In the title compound, $[\text{Mn}(\text{H}_2\text{O})_6](\text{C}_6\text{H}_2\text{N}_3\text{O}_7)_2 \cdot 2\text{H}_2\text{O}$, the manganese cation, on an inversion centre, is coordinated by six water molecules, but the picrate anion has no coordinative interaction with the manganese cation. The anions in the stack are linked *via* short intermolecular $\text{O} \cdots \text{C}$ (3.013 and 2.973 Å) and $\text{C} \cdots \text{C}$ (3.089 and 3.065 Å) contacts and hydrogen bonds.

Related literature

For related literature, see: Bibal *et al.* (2003); García *et al.* (2004); Harrowfield *et al.* (1995*a,b*); Honda *et al.* (2003); Ji & Chen (1996); Maartmann-Moe (1969); Olsher *et al.* (1996); Yang *et al.* (2001); Zhang *et al.* (2003).



Experimental

Crystal data

$[\text{Mn}(\text{H}_2\text{O})_6](\text{C}_6\text{H}_2\text{N}_3\text{O}_7)_2 \cdot 2\text{H}_2\text{O}$
 $M_r = 655.28$
 Orthorhombic, $Pccn$
 $a = 25.344$ (6) Å
 $b = 7.1625$ (17) Å
 $c = 13.217$ (3) Å

$V = 2399.2$ (9) Å³
 $Z = 4$
 Mo $K\alpha$ radiation
 $\mu = 0.67$ mm⁻¹
 $T = 294$ (2) K
 $0.28 \times 0.24 \times 0.20$ mm

Data collection

Bruker SMART CCD area-detector diffractometer

Absorption correction: multi-scan (SADABS; Sheldrick, 1996)
 $T_{\text{min}} = 0.835$, $T_{\text{max}} = 0.878$

11295 measured reflections
 2122 independent reflections

1643 reflections with $I > 2\sigma(I)$
 $R_{\text{int}} = 0.033$

Refinement

$R[F^2 > 2\sigma(F^2)] = 0.047$
 $wR(F^2) = 0.158$
 $S = 1.11$
 2122 reflections
 211 parameters
 8 restraints

H atoms treated by a mixture of independent and constrained refinement
 $\Delta\rho_{\text{max}} = 0.50$ e Å⁻³
 $\Delta\rho_{\text{min}} = -1.20$ e Å⁻³

Table 1

Selected geometric parameters (Å, °).

Mn1—O1	2.120 (3)	Mn1—O2	2.190 (2)
Mn1—O3	2.136 (3)		
O1—Mn1—O3	91.52 (11)	O3 ⁱ —Mn1—O2 ⁱ	86.83 (11)
O1—Mn1—O3 ⁱ	88.48 (11)	O1—Mn1—O2	86.98 (11)
O1—Mn1—O2 ⁱ	93.02 (11)	O3 ⁱ —Mn1—O2	93.17 (11)

Symmetry code: (i) $-x + 1, -y, -z + 1$.

Table 2

Hydrogen-bond geometry (Å, °).

$D-H \cdots A$	$D-H$	$H \cdots A$	$D \cdots A$	$D-H \cdots A$
O1—H1A \cdots O11 ⁱⁱ	0.846 (10)	1.938 (12)	2.780 (4)	173 (4)
O1—H1B \cdots O10 ⁱⁱⁱ	0.852 (10)	2.10 (2)	2.906 (4)	157 (4)
O2—H2A \cdots O10 ^{iv}	0.848 (10)	2.048 (12)	2.889 (4)	172 (4)
O2—H2A \cdots O9 ^v	0.848 (10)	2.53 (4)	2.986 (4)	115 (3)
O3—H3A \cdots O11 ^v	0.832 (10)	1.951 (12)	2.782 (4)	176 (5)
O3—H3B \cdots O6 ^{vi}	0.841 (10)	2.047 (12)	2.884 (4)	174 (5)
O11—H11A \cdots O2 ^{vii}	0.847 (10)	2.213 (19)	3.006 (4)	156 (4)
O11—H11B \cdots O10 ^{viii}	0.846 (10)	2.17 (2)	2.938 (4)	151 (4)
O11—H11B \cdots O4 ^{viii}	0.846 (10)	2.27 (3)	2.913 (4)	133 (4)
O2—H2B \cdots O4 ^{ix}	0.841 (10)	2.143 (19)	2.930 (4)	156 (4)

Symmetry codes: (ii) $x, -y + \frac{3}{2}, z - \frac{1}{2}$; (iii) $x, -y + \frac{3}{2}, z + \frac{1}{2}$; (iv) $-x + 1, y - \frac{1}{2}, -z + \frac{1}{2}$; (v) $x, y - 1, z$; (vi) $-x + \frac{1}{2}, y - 1, z + \frac{1}{2}$; (vii) $-x + 1, y + \frac{1}{2}, -z + \frac{3}{2}$; (viii) $-x + 1, -y + 2, -z + 1$; (ix) $-x + 1, -y + 1, -z + 1$.

Data collection: SMART (Bruker, 1997); cell refinement: SAINT (Bruker, 1997); data reduction: SAINT; program(s) used to solve structure: SHELXS97 (Sheldrick, 1997); program(s) used to refine structure: SHELXL97 (Sheldrick, 1997); molecular graphics: SHELXTL (Bruker, 1997); software used to prepare material for publication: SHELXTL.

We acknowledge financial support of this study by Zhengzhou University.

Supplementary data and figures for this paper are available from the IUCr electronic archives (Reference: WW2104).

References

- Bibal, B., Declercq, J. P., Dutasta, J. P., Tinant, B. & Valade, A. G. (2003). *Tetrahedron*, **59**, 5849–5854.
 Bruker (1997). SMART, SAINT and SHELXTL. Bruker AXS Inc., Madison, Wisconsin, USA.
 García, M. M. R., Verboom, W., Reinhoudt, D. N., Malinowska, E., Pietrzak, M. & Wojciechowska, D. (2004). *Tetrahedron*, **60**, 11299–11306.
 Harrowfield, J. M., Skelton, B. W. & White, A. H. (1995*a*). *Aust. J. Chem.* **48**, 1311–1331.
 Harrowfield, J. M., Skelton, B. W. & White, A. H. (1995*b*). *Aust. J. Chem.* **48**, 1333–1347.
 Honda, K., Yamawaki, H., Matsukawa, M., Goto, M., Matsunaga, T., Aoki, K., Yoshida, M. & Fujiwara, S. (2003). *Acta Cryst.* **C59**, m319–m321.

- Ji, B. M. & Chen, H. T. (1996). *J. Luoyang Teach. Coll.* **15**, 44–48.
- Maartmann-Moe, K. (1969). *Acta Cryst.* **B25**, 1452–1460.
- Olsher, U., Feinberg, H., Frolow, F. & Shoham, G. (1996). *Pure Appl. Chem.* **68**, 1195–1199.
- Sheldrick, G. M. (1996). *SADABS*. University of Göttingen, Germany.
- Sheldrick, G. M. (1997). *SHELXS97* and *SHELXL97*. University of Göttingen, Germany.
- Yang, L., Zhang, T. L., Feng, C. G., Zhang, J. G. & Yu, K. B. (2001). *Energ. Mater.* **9**, 37–39.
- Zhang, Y. L., Jiang, W. H., Liu, W. S., Wen, Y. H. & Yu, K. B. (2003). *Polyhedron*, **22**, 1695–1699.

supporting information

Acta Cryst. (2008). E64, m270–m271 [doi:10.1107/S1600536807064276]

Hexaaquamanganese(II) dipicrate dihydrate

Changying Liu, Xiufang Shi, Bin Du, Chunli Wu and Mingjie Zhang

S1. Comment

Picrate is commonly used as an accompanying ion in many systems involving extraction and transport of metal ions to improve the extractability and selectivity (Zhang *et al.*, 2003; Bibal *et al.*, 2003; García *et al.*, 2004). In many structures, picrate interacts as monodentate, bidentate and tridentate ligand (Olsher *et al.*, 1996). Besides, picrate is a penta-dentate ligand when it coordinates with sodium or potassium cation by chelating pairs of oxygen atoms from *p*-nitro groups of adjacent picrates, and with successive cation linking the array into two or three-dimensional network (Harrowfield *et al.*, 1995a; Maartmann-Moe, 1969). Furthermore, the picrate interacts as a heptadentate ligand through all its available oxygen donor atoms to coordinate with caesium (Harrowfield *et al.*, 1995a).

Fig. 1 shows the structure and the atomic numbering schemes of the crystal structure of the title manganese picrate complex (I). This situation is similar to the crystal structure of iron (II) picrate (Honda *et al.*, 2003) and Magnesium (II) picrate (Harrowfield *et al.*, 1995b) and the picrate anion adopts a keto form with C6—O10 bond distance of 1.257 (4) Å, C1—C6 and C5—C6 bond distance of 1.447 (5) and 1.456 (5) Å, respectively, which is longer than the other C—C bond lengths (between 1.374 (5) to 1.460 (4) Å) in the benzene ring. The Mn—O distance ranges from 2.120 (2) to 2.190 (2) Å. The bond angle C1—C6—C5 is 111.9 (3)°, which is the case in some picrate complexes, while the corresponding bond angle of picric acid is 116.4 (5)° (Yang *et al.*, 2001). Selected bond lengths and angles are given in Table 1.

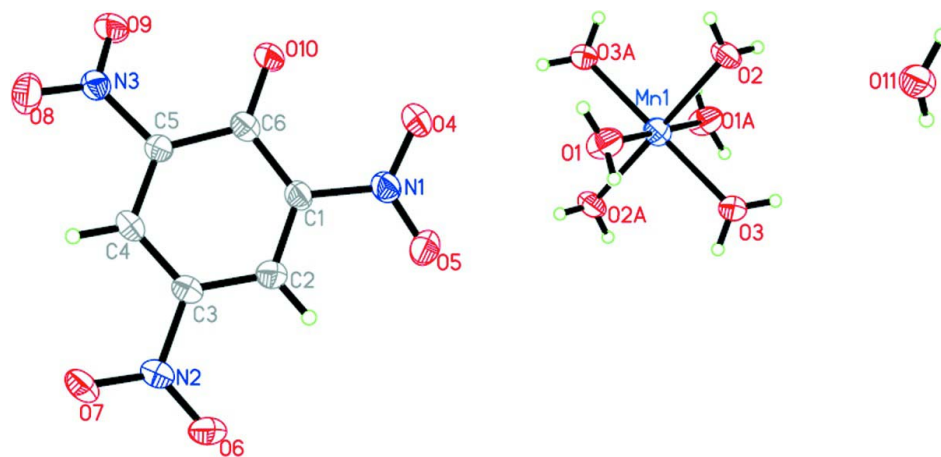
In the case of planarity of picrate anion, the *ortho* nitro group are twisted relative to the plane of the benzene ring, (between 19.01 and 27.69°), while *para*-positioned nitro group is deviated 13.02° off the benzene ring. The picrate ions are stacked head-to-tail, presumably as a result of charge-transfer interactions. The anion in the stack are linked *via* short intermolecular O···C and C···C contacts of 3.013, 2.973, 3.089 and 3.065 Å for O6···C1^x, O7···C5^{xi}, C2···C2^x and C4···C4^{xi} [symmetry codes: (x) 1/2 - x, 3/2 - y, z; (xi) 1/2 - x, 5/2 - y, z] respectively (Fig.2). The picrate anions are not parallel to one another, and the dihedral angles between neighbouring benzene planes are 25.01°, 25.25° and 3.48° respectively.

S2. Experimental

The title compound (I) was obtained by the reaction of 3.20 g (13.96 mmol) picric acid with 0.80 g (6.98 mmol) manganese carbonate in water (350 ml), according to Ji *et al.*, 1996. Heating has been continued for another 1 h and filtered while it was still hot. The filtrate was partially evaporated and left to stand in open atmosphere for a few days, during which time, yellow crystals suitable for X-Ray determination were obtained. Analysis, calculated for C₁₂H₂₀N₆O₂₂Mn: C 21.98, H 3.05, N 12.80, Mn 8.40%; Found: C 22.35, H 3.34, N 12.46, Mn 8.68%.

S3. Refinement

All H atoms of water were located from difference map and then refined with O—H distances restrained to 0.85 (1) Å. All other H atoms were positioned geometrically and refined using a riding mode with the C—H bond lengths of 0.93 Å and $U_{\text{iso}}(\text{H})=1.2U_{\text{eq}}(\text{carrier atom})$.

**Figure 1**

The molecular structure of (I), with displacement ellipsoids at the 50% probability level and the atomic labeling scheme.

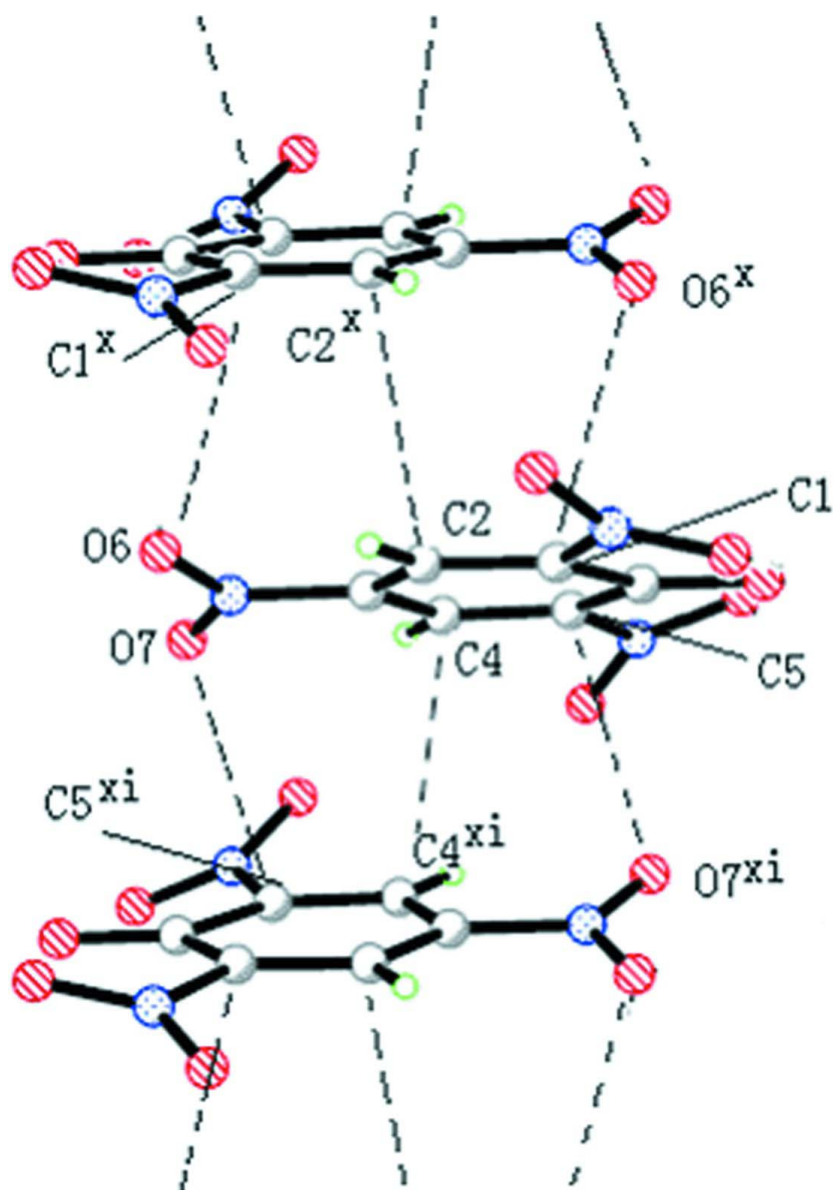


Figure 2

The crystal structure of (I), projected along the c axis. The dashed lines indicate short intermolecular contacts with $N\cdots O$, $C\cdots C$ and $O\cdots C$ distances less than 3.0, 3.2 and 3.0 Å, respectively. [Symmetry mode: $(x) 1/2 - x, 3/2 - y, z$; $(xi) 1/2 - x, 5/2 - y, z$]

Hexaaquamanganese(II) dipicrate dihydrate

Crystal data

$[\text{Mn}(\text{H}_2\text{O})_6](\text{C}_6\text{H}_2\text{N}_3\text{O}_7)_2 \cdot 2\text{H}_2\text{O}$

$M_r = 655.28$

Orthorhombic, $Pccn$

Hall symbol: $-P\ 2ab\ 2ac$

$a = 25.344\ (6)\ \text{Å}$

$b = 7.1625\ (17)\ \text{Å}$

$c = 13.217\ (3)\ \text{Å}$

$V = 2399.2\ (9)\ \text{Å}^3$

$Z = 4$

$F(000) = 1340$

$D_x = 1.814\ \text{Mg m}^{-3}$

Mo $K\alpha$ radiation, $\lambda = 0.71073\ \text{Å}$

Cell parameters from 3819 reflections

$\theta = 3.0\text{--}26.9^\circ$

$\mu = 0.67 \text{ mm}^{-1}$
 $T = 294 \text{ K}$

Prism, yellow
 $0.28 \times 0.24 \times 0.20 \text{ mm}$

Data collection

Bruker SMART CCD area-detector
 diffractometer
 Radiation source: fine-focus sealed tube
 Graphite monochromator
 φ and ω scans
 Absorption correction: multi-scan
 (SADABS; Sheldrick, 1996)
 $T_{\min} = 0.835$, $T_{\max} = 0.878$

11295 measured reflections
 2122 independent reflections
 1643 reflections with $I > 2\sigma(I)$
 $R_{\text{int}} = 0.033$
 $\theta_{\max} = 25.0^\circ$, $\theta_{\min} = 3.0^\circ$
 $h = -30 \rightarrow 20$
 $k = -6 \rightarrow 8$
 $l = -14 \rightarrow 15$

Refinement

Refinement on F^2
 Least-squares matrix: full
 $R[F^2 > 2\sigma(F^2)] = 0.047$
 $wR(F^2) = 0.158$
 $S = 1.11$
 2122 reflections
 211 parameters
 8 restraints
 Primary atom site location: structure-invariant
 direct methods

Secondary atom site location: difference Fourier
 map
 Hydrogen site location: inferred from
 neighbouring sites
 H atoms treated by a mixture of independent
 and constrained refinement
 $w = 1/[\sigma^2(F_o^2) + (0.1031P)^2 + 1.8926P]$
 where $P = (F_o^2 + 2F_c^2)/3$
 $(\Delta/\sigma)_{\max} = 0.002$
 $\Delta\rho_{\max} = 0.50 \text{ e } \text{Å}^{-3}$
 $\Delta\rho_{\min} = -1.20 \text{ e } \text{Å}^{-3}$

Special details

Geometry. All e.s.d.'s (except the e.s.d. in the dihedral angle between two l.s. planes) are estimated using the full covariance matrix. The cell e.s.d.'s are taken into account individually in the estimation of e.s.d.'s in distances, angles and torsion angles; correlations between e.s.d.'s in cell parameters are only used when they are defined by crystal symmetry. An approximate (isotropic) treatment of cell e.s.d.'s is used for estimating e.s.d.'s involving l.s. planes.

Refinement. Refinement of F^2 against ALL reflections. The weighted R -factor wR and goodness of fit S are based on F^2 , conventional R -factors R are based on F , with F set to zero for negative F^2 . The threshold expression of $F^2 > \sigma(F^2)$ is used only for calculating R -factors(gt) etc. and is not relevant to the choice of reflections for refinement. R -factors based on F^2 are statistically about twice as large as those based on F , and R -factors based on ALL data will be even larger.

Fractional atomic coordinates and isotropic or equivalent isotropic displacement parameters (Å^2)

	x	y	z	$U_{\text{iso}}^*/U_{\text{eq}}$
Mn1	0.5000	0.0000	0.5000	0.0324 (3)
O1	0.46126 (10)	0.2424 (4)	0.4457 (2)	0.0421 (7)
H1A	0.4744 (16)	0.322 (5)	0.406 (3)	0.051*
H1B	0.4352 (12)	0.300 (6)	0.472 (3)	0.051*
O2	0.55826 (9)	0.1880 (4)	0.56780 (19)	0.0330 (6)
H2A	0.5744 (14)	0.275 (4)	0.537 (3)	0.040*
H2B	0.5784 (12)	0.128 (5)	0.606 (2)	0.040*
O3	0.45862 (10)	0.0148 (5)	0.6406 (2)	0.0445 (8)
H3A	0.4722 (18)	0.009 (6)	0.6979 (17)	0.053*
H3B	0.4257 (5)	0.002 (6)	0.637 (4)	0.053*
O4	0.38727 (10)	0.9511 (5)	0.2517 (2)	0.0513 (8)
O5	0.31431 (10)	0.8379 (4)	0.30495 (17)	0.0370 (6)
O6	0.15343 (9)	0.9452 (4)	0.1363 (2)	0.0377 (7)

O7	0.15241 (9)	1.0752 (4)	-0.0108 (2)	0.0394 (7)
O8	0.31310 (10)	1.1774 (4)	-0.18909 (18)	0.0380 (6)
O9	0.38129 (10)	1.0114 (4)	-0.15080 (19)	0.0366 (7)
O10	0.39594 (9)	0.9860 (4)	0.05051 (18)	0.0341 (6)
N1	0.34078 (10)	0.9135 (4)	0.2395 (2)	0.0283 (7)
N2	0.17602 (11)	1.0079 (4)	0.0613 (2)	0.0251 (7)
N3	0.33772 (10)	1.0754 (4)	-0.1311 (2)	0.0258 (6)
C1	0.31536 (13)	0.9605 (5)	0.1440 (2)	0.0242 (7)
C2	0.26072 (13)	0.9623 (5)	0.1463 (3)	0.0251 (7)
H2	0.2428	0.9370	0.2062	0.030*
C3	0.23318 (13)	1.0019 (4)	0.0588 (2)	0.0235 (7)
C4	0.25917 (13)	1.0386 (4)	-0.0315 (3)	0.0245 (7)
H4	0.2402	1.0684	-0.0895	0.029*
C5	0.31330 (13)	1.0304 (4)	-0.0340 (2)	0.0229 (7)
C6	0.34639 (13)	0.9917 (4)	0.0536 (3)	0.0246 (7)
O11	0.50741 (10)	0.9801 (4)	0.8282 (2)	0.0377 (7)
H11A	0.4971 (15)	0.878 (3)	0.854 (3)	0.045*
H11B	0.5400 (6)	0.982 (6)	0.842 (3)	0.045*

Atomic displacement parameters (\AA^2)

	U^{11}	U^{22}	U^{33}	U^{12}	U^{13}	U^{23}
Mn1	0.0302 (5)	0.0345 (5)	0.0324 (5)	-0.0018 (3)	-0.0020 (3)	0.0010 (3)
O1	0.0328 (14)	0.0450 (17)	0.0486 (17)	0.0143 (12)	0.0079 (12)	0.0177 (13)
O2	0.0237 (12)	0.0355 (14)	0.0398 (15)	-0.0053 (10)	-0.0081 (10)	0.0038 (11)
O3	0.0233 (14)	0.080 (2)	0.0299 (15)	-0.0049 (13)	0.0010 (11)	0.0035 (14)
O4	0.0246 (14)	0.098 (2)	0.0312 (15)	-0.0061 (14)	-0.0079 (11)	0.0097 (15)
O5	0.0351 (13)	0.0514 (17)	0.0247 (13)	0.0044 (12)	0.0019 (10)	0.0052 (12)
O6	0.0214 (13)	0.0518 (17)	0.0399 (15)	0.0010 (11)	0.0062 (11)	0.0082 (13)
O7	0.0202 (13)	0.0538 (18)	0.0443 (16)	0.0023 (12)	-0.0087 (11)	0.0137 (13)
O8	0.0415 (14)	0.0462 (16)	0.0263 (13)	0.0089 (12)	-0.0015 (11)	0.0059 (12)
O9	0.0194 (13)	0.0578 (18)	0.0325 (14)	0.0028 (11)	0.0030 (10)	-0.0004 (12)
O10	0.0160 (12)	0.0588 (18)	0.0274 (14)	0.0035 (10)	-0.0005 (9)	0.0030 (11)
N1	0.0224 (15)	0.0361 (17)	0.0265 (15)	0.0045 (12)	-0.0018 (12)	-0.0022 (13)
N2	0.0187 (14)	0.0231 (15)	0.0334 (17)	-0.0001 (11)	-0.0012 (12)	-0.0012 (12)
N3	0.0235 (14)	0.0308 (15)	0.0231 (14)	-0.0023 (12)	-0.0018 (11)	-0.0031 (12)
C1	0.0208 (16)	0.0291 (18)	0.0226 (16)	0.0028 (13)	-0.0026 (13)	-0.0010 (14)
C2	0.0218 (17)	0.0265 (18)	0.0269 (17)	0.0002 (13)	0.0015 (13)	-0.0006 (14)
C3	0.0180 (16)	0.0232 (16)	0.0294 (18)	0.0012 (12)	-0.0011 (13)	-0.0019 (13)
C4	0.0204 (17)	0.0259 (17)	0.0271 (17)	0.0018 (13)	-0.0060 (13)	-0.0009 (14)
C5	0.0200 (16)	0.0263 (18)	0.0224 (16)	-0.0011 (13)	0.0000 (13)	-0.0007 (13)
C6	0.0208 (17)	0.0265 (18)	0.0265 (19)	0.0016 (13)	-0.0029 (13)	-0.0023 (13)
O11	0.0303 (15)	0.0455 (17)	0.0374 (16)	-0.0029 (12)	-0.0032 (12)	0.0069 (12)

Geometric parameters (\AA , $^\circ$)

Mn1—O1	2.120 (3)	C1—C2	1.385 (5)
Mn1—O1 ⁱ	2.120 (3)	C1—C6	1.447 (5)

Mn1—O3	2.136 (3)	C2—C3	1.380 (5)
Mn1—O3 ⁱ	2.136 (3)	C3—C4	1.389 (5)
Mn1—O2	2.190 (2)	C4—C5	1.374 (5)
Mn1—O2	2.190 (2)	C5—C6	1.456 (5)
O4—N1	1.219 (4)	C2—H2	0.931
O5—N1	1.222 (4)	C4—H4	0.931
O6—N2	1.229 (4)	O1—H1A	0.846 (10)
O7—N2	1.225 (4)	O1—H1B	0.852 (10)
O8—N3	1.229 (4)	O2—H2A	0.848 (10)
O9—N3	1.224 (4)	O2—H2B	0.841 (10)
O10—C6	1.257 (4)	O3—H3A	0.832 (10)
N1—C1	1.456 (4)	O3—H3B	0.841 (10)
N2—C3	1.450 (4)	O11—H11A	0.847 (10)
N3—C5	1.460 (4)	O11—H11B	0.846 (10)
O1—Mn1—O1 ⁱ	180.0	O9—N3—O8	123.2 (3)
O1—Mn1—O3	91.52 (11)	O9—N3—C5	119.1 (3)
O1 ⁱ —Mn1—O3	88.48 (11)	O8—N3—C5	117.7 (3)
O1—Mn1—O3 ⁱ	88.48 (11)	C2—C1—C6	124.1 (3)
O1 ⁱ —Mn1—O3 ⁱ	91.52 (11)	C2—C1—N1	115.1 (3)
O3—Mn1—O3 ⁱ	180.0	C6—C1—N1	120.7 (3)
O1—Mn1—O2 ⁱ	93.02 (11)	C3—C2—C1	119.3 (3)
O1 ⁱ —Mn1—O2 ⁱ	86.98 (11)	C2—C3—C4	121.3 (3)
O3—Mn1—O2 ⁱ	93.18 (11)	C2—C3—N2	119.5 (3)
O3 ⁱ —Mn1—O2 ⁱ	86.83 (11)	C4—C3—N2	119.2 (3)
O1—Mn1—O2	86.98 (11)	C5—C4—C3	119.1 (3)
O1 ⁱ —Mn1—O2	93.02 (11)	C4—C5—C6	124.4 (3)
O3—Mn1—O2	86.83 (11)	C4—C5—N3	115.8 (3)
O3 ⁱ —Mn1—O2	93.17 (11)	C6—C5—N3	119.8 (3)
O2 ⁱ —Mn1—O2	180.0	O10—C6—C1	124.4 (3)
O4—N1—O5	122.3 (3)	O10—C6—C5	123.8 (3)
O4—N1—C1	119.5 (3)	C1—C6—C5	111.9 (3)
O5—N1—C1	118.3 (3)	C3—C2—H2	120.36
O7—N2—O6	123.0 (3)	C1—C2—H2	120.37
O7—N2—C3	118.8 (3)	C3—C4—H4	120.43
O6—N2—C3	118.2 (3)	C5—C4—H4	120.41
O4—N1—C1—C2	-162.6 (3)	C3—C4—C5—C6	-2.3 (5)
O5—N1—C1—C2	17.1 (4)	C3—C4—C5—N3	-178.5 (3)
O4—N1—C1—C6	20.8 (5)	O9—N3—C5—C4	-154.6 (3)
O5—N1—C1—C6	-159.6 (3)	O8—N3—C5—C4	25.5 (4)
C6—C1—C2—C3	-2.2 (5)	O9—N3—C5—C6	29.0 (4)
N1—C1—C2—C3	-178.8 (3)	O8—N3—C5—C6	-150.8 (3)
C1—C2—C3—C4	0.5 (5)	C2—C1—C6—O10	-178.3 (3)
C1—C2—C3—N2	-178.7 (3)	N1—C1—C6—O10	-1.9 (5)
O7—N2—C3—C2	167.0 (3)	C2—C1—C6—C5	1.6 (5)
O6—N2—C3—C2	-12.8 (4)	N1—C1—C6—C5	178.0 (3)
O7—N2—C3—C4	-12.2 (4)	C4—C5—C6—O10	-179.4 (3)

O6—N2—C3—C4	168.0 (3)	N3—C5—C6—O10	-3.4 (5)
C2—C3—C4—C5	1.7 (5)	C4—C5—C6—C1	0.7 (4)
N2—C3—C4—C5	-179.1 (3)	N3—C5—C6—C1	176.7 (3)

Symmetry code: (i) $-x+1, -y, -z+1$.

Hydrogen-bond geometry (Å, °)

<i>D</i> —H \cdots <i>A</i>	<i>D</i> —H	H \cdots <i>A</i>	<i>D</i> \cdots <i>A</i>	<i>D</i> —H \cdots <i>A</i>
O1—H1A \cdots O11 ⁱⁱ	0.85 (1)	1.94 (1)	2.780 (4)	173 (4)
O1—H1B \cdots O10 ⁱⁱⁱ	0.85 (1)	2.10 (2)	2.906 (4)	157 (4)
O2—H2A \cdots O10 ^{iv}	0.85 (1)	2.05 (1)	2.889 (4)	172 (4)
O2—H2A \cdots O9 ^{iv}	0.85 (1)	2.53 (4)	2.986 (4)	115 (3)
O3—H3A \cdots O11 ^v	0.83 (1)	1.95 (1)	2.782 (4)	176 (5)
O3—H3B \cdots O6 ^{vi}	0.84 (1)	2.05 (1)	2.884 (4)	174 (5)
O11—H11A \cdots O2 ^{vii}	0.85 (1)	2.21 (2)	3.006 (4)	156 (4)
O11—H11B \cdots O10 ^{viii}	0.85 (1)	2.17 (2)	2.938 (4)	151 (4)
O11—H11B \cdots O4 ^{viii}	0.85 (1)	2.27 (3)	2.913 (4)	133 (4)
O2—H2B \cdots O4 ^{ix}	0.84 (1)	2.14 (2)	2.930 (4)	156 (4)

Symmetry codes: (ii) $x, -y+3/2, z-1/2$; (iii) $x, -y+3/2, z+1/2$; (iv) $-x+1, y-1/2, -z+1/2$; (v) $x, y-1, z$; (vi) $-x+1/2, y-1, z+1/2$; (vii) $-x+1, y+1/2, -z+3/2$; (viii) $-x+1, -y+2, -z+1$; (ix) $-x+1, -y+1, -z+1$.