

Acta Crystallographica Section E

## Structure Reports

Online

ISSN 1600-5368

## (2-Chlorophenyl)(diphenylphosphoryl)-methanol

Wan-Yun Liu\* and Ping Huo

Department of Chemistry and Bioengineering, Yichun University, Yichun 336000, People's Republic of China

Correspondence e-mail: liuwanyun2006@tom.com

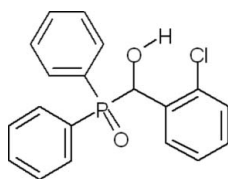
Received 18 October 2007; accepted 10 November 2007

 Key indicators: single-crystal X-ray study;  $T = 293$  K; mean  $\sigma(\text{C}-\text{C}) = 0.005$  Å;  $R$  factor = 0.035;  $wR$  factor = 0.084; data-to-parameter ratio = 16.7.

The title compound,  $\text{C}_{19}\text{H}_{16}\text{ClO}_2\text{P}$ , was obtained by the reaction of diphenylphosphine oxide with 2-chlorobenzaldehyde. The molecule has a tetrahedral structure at the P atom. The dihedral angle between the phenyl rings attached to the P atom is  $80.4(1)^\circ$ . The molecules are linked together by intermolecular  $\text{O}-\text{H}\cdots\text{O}$  and  $\text{C}-\text{H}\cdots\text{O}$  hydrogen-bonding interactions. The crystal studied was an inversion twin.

### Related literature

For general background, see: Clark *et al.* (2002). For related structures, see: Dankowski *et al.* (1979); Liu *et al.* (2007).



### Experimental

#### Crystal data

 $\text{C}_{19}\text{H}_{16}\text{ClO}_2\text{P}$ 
 $M_r = 342.74$ 

 Orthorhombic,  $P2_12_12_1$ 
 $a = 9.0943(4)$  Å

 $b = 10.9172(6)$  Å

 $c = 18.0657(12)$  Å

 $V = 1793.64(17)$  Å<sup>3</sup>
 $Z = 4$ 

 Mo  $K\alpha$  radiation

 $\mu = 0.31$  mm<sup>-1</sup>
 $T = 293(2)$  K

 $0.57 \times 0.20 \times 0.10$  mm

#### Data collection

 Bruker APEX area-detector diffractometer  
 Absorption correction: multi-scan (SADABS; (Bruker, 2001))  
 $T_{\min} = 0.844$ ,  $T_{\max} = 0.970$ 

 8361 measured reflections  
 3466 independent reflections  
 2494 reflections with  $I > 2\sigma(I)$   
 $R_{\text{int}} = 0.035$ 

#### Refinement

 $R[F^2 > 2\sigma(F^2)] = 0.035$ 
 $wR(F^2) = 0.084$ 
 $S = 0.91$ 

3466 reflections

208 parameters

H-atom parameters constrained

 $\Delta\rho_{\text{max}} = 0.20$  e Å<sup>-3</sup>
 $\Delta\rho_{\text{min}} = -0.26$  e Å<sup>-3</sup>

Absolute structure: Flack (1983),

1437 Friedel pairs

Flack parameter: 0.55 (8)

**Table 1**

Hydrogen-bond geometry (Å, °).

$D-\text{H}\cdots A$	$D-\text{H}$	$\text{H}\cdots A$	$D\cdots A$	$D-\text{H}\cdots A$
$\text{O2}-\text{H2A}\cdots\text{O1}^i$	0.82	1.82	2.602 (2)	158
$\text{C1}-\text{H3A}\cdots\text{O1}^i$	0.98	2.56	3.059 (2)	111
$\text{C16}-\text{H33A}\cdots\text{O2}^{ii}$	0.93	2.56	3.318 (3)	139

 Symmetry codes: (i)  $-x + 1, y + \frac{1}{2}, -z + \frac{1}{2}$ ; (ii)  $-x, y - \frac{1}{2}, -z + \frac{1}{2}$ .

Data collection: SMART (Bruker, 2001); cell refinement: SAINT (Bruker, 2001); data reduction: SAINT; program(s) used to solve structure: SHELXS97 (Sheldrick, 1997); program(s) used to refine structure: SHELXL97 (Sheldrick, 1997); molecular graphics: ORTEP-3 for Windows (Farrugia, 1997); software used to prepare material for publication: SHELXL97.

The authors thank the Technical Project of the Department of Education of Jiangxi Province, China, and the Key Technical Project of Yichun Municipality, China, for supporting this work.

Supplementary data and figures for this paper are available from the IUCr electronic archives (Reference: XU2343).

### References

- Bruker (2001). SAINT (Version 6.22), SMART (Version 5.625) and SADABS (Version 2.03). Bruker AXS Inc., Madison, Wisconsin, USA.
- Clark, H. J., Wang, R. & Alper, H. (2002). *J. Org. Chem.* **67**, 6224–6225.
- Dankowski, M., Praefcke, K., Nyburg, S. C. & Wong-ng, W. (1979). *Phosphorus Sulfur*, **7**, 275–279.
- Farrugia, L. J. (1997). *J. Appl. Cryst.* **30**, 565.
- Flack, H. D. (1983). *Acta Cryst.* **A39**, 876–881.
- Liu, W.-Y., Huo, P., Gao, Y.-X., Liu, P. & Zhao, Y.-F. (2007). *Acta Cryst.* **E63**, o1008–o1009.
- Sheldrick, G. M. (1997). SHELXS97 and SHELXL97. University of Göttingen, Germany.

## supporting information

*Acta Cryst.* (2008). E64, o233 [https://doi.org/10.1107/S1600536807057674]

**(2-Chlorophenyl)(diphenylphosphoryl)methanol****Wan-Yun Liu and Ping Huo****S1. Comment**

The title compound is an analog of (diphenylphosphinoyl)phenylmethanol, which was employed as a ligand in the rhodiumcatalyzed hydroformylation of alkenes, with good conversions and regioselectivities (Clark *et al.*, 2002).

The molecular structure is shown in Fig. 1. Bond lengths and angles are in agreement with those reported for similar compounds (Dankowski *et al.*, 1979; Liu *et al.*, 2007). The dihedral angle between the C8-phenyl and C14-phenyl planes is 80.4 (1)°. The O—H···O and C—H···O hydrogen bonds (Table 1) involving the hydroxyl group link the molecules into a supra-molecular structure.

**S2. Experimental**

To a solution of 2-chlorobenzaldehyde (0.28 g, 2.0 mmol) and diphenylphosphine oxide (0.41 g, 2.0 mmol) in tetrahydrofuran (10 ml) at 273 K was added dropwise triethylamine (0.30 ml, 2.0 mmol). The cooling bath was removed and the mixture warmed to ambient temperature for 2 h. The solvent was concentrated under vacuum and the crude product was purified by column chromatography (petroleum ether-ethyl acetate, 1:1) to give the title compound as a white solid in 85% yield. Single crystals were obtained by slow evaporation of a methanol solution.

**S3. Refinement**

All H atoms were placed in geometrically idealized positions and constrained to ride on their parent atoms, with C—H = 0.93 Å (aromatic), 0.98 Å (methine), O—H = 0.82 Å, and  $U_{\text{iso}}(\text{H}) = 1.2U_{\text{eq}}(\text{C})$  and  $1.5U_{\text{eq}}(\text{O})$ . The absolute structure was not determined.

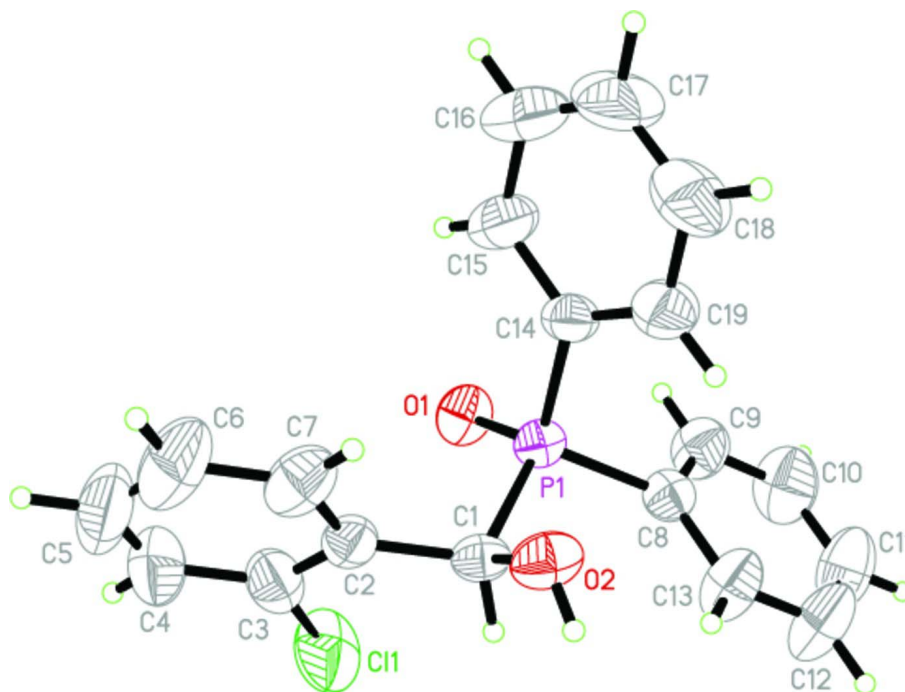


Figure 1

The molecular structure of (I), showing 50% probability displacement ellipsoids (arbitrary spheres for H atoms).

'(2-Chlorophenyl)(diphenylphosphoryl)methanol'

*Crystal data*

$C_{19}H_{16}ClO_2P$

$M_r = 342.74$

Orthorhombic,  $P2_12_12_1$

Hall symbol: P 2ac 2ab

$a = 9.0943$  (4) Å

$b = 10.9172$  (6) Å

$c = 18.0657$  (12) Å

$V = 1793.64$  (17) Å<sup>3</sup>

$Z = 4$

$F(000) = 712$

$D_x = 1.269$  Mg m<sup>-3</sup>

Mo  $K\alpha$  radiation,  $\lambda = 0.71073$  Å

Cell parameters from 3220 reflections

$\theta = 2.5$ – $32.6^\circ$

$\mu = 0.31$  mm<sup>-1</sup>

$T = 293$  K

Plate, colorless

$0.57 \times 0.20 \times 0.10$  mm

*Data collection*

Bruker APEX area-detector  
diffractometer

Radiation source: fine-focus sealed tube

Graphite monochromator

$\varphi$  and  $\omega$  scans

Absorption correction: multi-scan

(*SADABS*; (Bruker, 2001))

$T_{\min} = 0.844$ ,  $T_{\max} = 0.970$

8361 measured reflections

3466 independent reflections

2494 reflections with  $I > 2\sigma(I)$

$R_{\text{int}} = 0.035$

$\theta_{\text{max}} = 26.0^\circ$ ,  $\theta_{\text{min}} = 2.5^\circ$

$h = -11 \rightarrow 10$

$k = -13 \rightarrow 13$

$l = -22 \rightarrow 19$

*Refinement*Refinement on  $F^2$ 

Least-squares matrix: full

 $R[F^2 > 2\sigma(F^2)] = 0.035$  $wR(F^2) = 0.084$  $S = 0.91$ 

3466 reflections

208 parameters

0 restraints

Primary atom site location: structure-invariant  
direct methodsSecondary atom site location: difference Fourier  
mapHydrogen site location: inferred from  
neighbouring sites

H-atom parameters constrained

 $w = 1/[\sigma^2(F_o^2) + (0.0482P)^2]$ where  $P = (F_o^2 + 2F_c^2)/3$  $(\Delta/\sigma)_{\max} < 0.001$  $\Delta\rho_{\max} = 0.20 \text{ e } \text{\AA}^{-3}$  $\Delta\rho_{\min} = -0.26 \text{ e } \text{\AA}^{-3}$ Absolute structure: Flack (1983), 1437 Friedel  
pairs

Absolute structure parameter: 0.55 (8)

*Special details*

**Geometry.** All e.s.d.'s (except the e.s.d. in the dihedral angle between two l.s. planes) are estimated using the full covariance matrix. The cell e.s.d.'s are taken into account individually in the estimation of e.s.d.'s in distances, angles and torsion angles; correlations between e.s.d.'s in cell parameters are only used when they are defined by crystal symmetry. An approximate (isotropic) treatment of cell e.s.d.'s is used for estimating e.s.d.'s involving l.s. planes.

**Refinement.** Refinement of  $F^2$  against ALL reflections. The weighted  $R$ -factor  $wR$  and goodness of fit  $S$  are based on  $F^2$ , conventional  $R$ -factors  $R$  are based on  $F$ , with  $F$  set to zero for negative  $F^2$ . The threshold expression of  $F^2 > \sigma(F^2)$  is used only for calculating  $R$ -factors(gt) *etc.* and is not relevant to the choice of reflections for refinement.  $R$ -factors based on  $F^2$  are statistically about twice as large as those based on  $F$ , and  $R$ -factors based on ALL data will be even larger.

*Fractional atomic coordinates and isotropic or equivalent isotropic displacement parameters ( $\text{\AA}^2$ )*

	$x$	$y$	$z$	$U_{\text{iso}}^*/U_{\text{eq}}$
P1	0.39075 (6)	0.07346 (5)	0.22300 (3)	0.03563 (15)
Cl1	0.68961 (8)	0.08726 (10)	0.36635 (5)	0.0874 (3)
C1	0.4310 (2)	0.20391 (18)	0.28358 (14)	0.0371 (5)
H3A	0.5340	0.2276	0.2764	0.045*
C2	0.4092 (3)	0.1697 (2)	0.36374 (14)	0.0425 (6)
C3	0.5177 (3)	0.1153 (3)	0.40525 (16)	0.0574 (7)
C4	0.4977 (4)	0.0838 (3)	0.47859 (18)	0.0795 (9)
H26A	0.5729	0.0468	0.5054	0.095*
C5	0.3652 (5)	0.1080 (3)	0.5109 (2)	0.0929 (12)
H12A	0.3501	0.0876	0.5603	0.112*
C6	0.2538 (4)	0.1621 (3)	0.4712 (2)	0.0850 (11)
H27A	0.1637	0.1775	0.4937	0.102*
C7	0.2752 (3)	0.1935 (2)	0.39825 (17)	0.0616 (8)
H10A	0.1998	0.2308	0.3718	0.074*
C8	0.4778 (2)	0.1058 (2)	0.13569 (14)	0.0405 (6)
C9	0.5076 (3)	0.0066 (3)	0.09105 (16)	0.0575 (7)
H8A	0.4765	-0.0711	0.1053	0.069*
C10	0.5824 (4)	0.0211 (3)	0.02620 (17)	0.0771 (10)
H19A	0.6024	-0.0467	-0.0033	0.093*
C11	0.6281 (4)	0.1348 (3)	0.00437 (18)	0.0807 (10)
H21A	0.6781	0.1442	-0.0402	0.097*
C12	0.6006 (4)	0.2345 (3)	0.04770 (18)	0.0818 (10)
H20A	0.6325	0.3117	0.0331	0.098*

C13	0.5251 (3)	0.2202 (3)	0.11336 (17)	0.0641 (8)
H11A	0.5058	0.2881	0.1428	0.077*
C14	0.1961 (2)	0.0688 (2)	0.20812 (13)	0.0421 (5)
C15	0.1179 (3)	-0.0269 (3)	0.23868 (18)	0.0702 (8)
H13A	0.1659	-0.0852	0.2674	0.084*
C16	-0.0321 (4)	-0.0361 (4)	0.2266 (3)	0.0999 (12)
H33A	-0.0845	-0.1009	0.2471	0.120*
C17	-0.1028 (4)	0.0485 (4)	0.1851 (2)	0.0939 (11)
H22A	-0.2038	0.0421	0.1780	0.113*
C18	-0.0284 (3)	0.1419 (3)	0.1541 (2)	0.0795 (10)
H17A	-0.0780	0.1992	0.1253	0.095*
C19	0.1227 (3)	0.1530 (2)	0.16514 (16)	0.0590 (7)
H14A	0.1740	0.2173	0.1434	0.071*
O1	0.44309 (17)	-0.04402 (12)	0.25449 (9)	0.0471 (4)
O2	0.34008 (16)	0.30243 (12)	0.26047 (10)	0.0491 (5)
H2A	0.3910	0.3630	0.2525	0.074*

*Atomic displacement parameters (Å<sup>2</sup>)*

	$U^{11}$	$U^{22}$	$U^{33}$	$U^{12}$	$U^{13}$	$U^{23}$
P1	0.0332 (3)	0.0318 (3)	0.0419 (3)	0.0014 (3)	0.0010 (3)	0.0005 (3)
C11	0.0540 (4)	0.1355 (7)	0.0726 (5)	0.0196 (5)	-0.0150 (4)	0.0185 (6)
C1	0.0298 (11)	0.0323 (11)	0.0493 (14)	0.0003 (9)	0.0007 (11)	-0.0017 (11)
C2	0.0517 (14)	0.0346 (12)	0.0413 (14)	-0.0059 (11)	0.0048 (14)	-0.0053 (11)
C3	0.0652 (17)	0.0603 (18)	0.0467 (16)	-0.0005 (14)	-0.0054 (15)	-0.0049 (14)
C4	0.099 (2)	0.089 (2)	0.0506 (19)	-0.005 (2)	-0.0087 (18)	0.0145 (18)
C5	0.140 (4)	0.091 (3)	0.0477 (18)	-0.015 (3)	0.024 (2)	0.0091 (18)
C6	0.103 (3)	0.078 (2)	0.074 (2)	0.005 (2)	0.041 (2)	0.0077 (19)
C7	0.0624 (17)	0.0542 (16)	0.068 (2)	0.0005 (14)	0.0213 (16)	0.0022 (15)
C8	0.0352 (11)	0.0436 (14)	0.0427 (14)	0.0033 (10)	0.0008 (11)	-0.0010 (12)
C9	0.0623 (18)	0.0587 (17)	0.0515 (17)	0.0010 (14)	0.0121 (15)	-0.0047 (14)
C10	0.092 (3)	0.081 (2)	0.059 (2)	0.0148 (19)	0.0227 (19)	-0.0111 (17)
C11	0.095 (2)	0.091 (3)	0.056 (2)	0.014 (2)	0.032 (2)	0.0139 (18)
C12	0.106 (3)	0.0631 (19)	0.076 (2)	-0.003 (2)	0.032 (2)	0.0198 (17)
C13	0.080 (2)	0.0497 (17)	0.062 (2)	0.0061 (15)	0.0202 (17)	0.0086 (14)
C14	0.0349 (11)	0.0469 (12)	0.0446 (14)	-0.0067 (12)	0.0003 (10)	-0.0040 (13)
C15	0.0531 (16)	0.0746 (17)	0.083 (2)	-0.0208 (15)	-0.0027 (17)	0.0197 (16)
C16	0.060 (2)	0.122 (3)	0.117 (3)	-0.044 (2)	-0.001 (2)	0.021 (3)
C17	0.0360 (14)	0.143 (3)	0.103 (3)	-0.021 (2)	-0.0043 (19)	-0.006 (3)
C18	0.0530 (18)	0.099 (2)	0.086 (3)	0.0122 (18)	-0.0214 (18)	0.001 (2)
C19	0.0388 (14)	0.0696 (17)	0.069 (2)	-0.0036 (14)	-0.0068 (14)	0.0108 (14)
O1	0.0562 (10)	0.0317 (8)	0.0535 (10)	0.0105 (7)	0.0034 (9)	0.0033 (7)
O2	0.0413 (8)	0.0317 (8)	0.0743 (13)	0.0030 (6)	-0.0005 (9)	0.0047 (8)

*Geometric parameters (Å, °)*

P1—O1	1.4816 (15)	C9—H8A	0.9300
P1—C14	1.792 (2)	C10—C11	1.367 (4)

P1—C8	1.800 (3)	C10—H19A	0.9300
P1—C1	1.833 (2)	C11—C12	1.364 (4)
C11—C3	1.741 (3)	C11—H21A	0.9300
C1—O2	1.420 (2)	C12—C13	1.380 (4)
C1—C2	1.509 (3)	C12—H20A	0.9300
C1—H3A	0.9800	C13—H11A	0.9300
C2—C3	1.374 (4)	C14—C19	1.375 (3)
C2—C7	1.393 (3)	C14—C15	1.379 (3)
C3—C4	1.381 (4)	C15—C16	1.385 (4)
C4—C5	1.364 (5)	C15—H13A	0.9300
C4—H26A	0.9300	C16—C17	1.351 (5)
C5—C6	1.374 (5)	C16—H33A	0.9300
C5—H12A	0.9300	C17—C18	1.346 (5)
C6—C7	1.375 (4)	C17—H22A	0.9300
C6—H27A	0.9300	C18—C19	1.394 (4)
C7—H10A	0.9300	C18—H17A	0.9300
C8—C9	1.378 (3)	C19—H14A	0.9300
C8—C13	1.380 (3)	O2—H2A	0.8200
C9—C10	1.364 (4)		
O1—P1—C14	110.54 (11)	C10—C9—H8A	119.7
O1—P1—C8	111.42 (10)	C8—C9—H8A	119.7
C14—P1—C8	107.99 (11)	C9—C10—C11	120.3 (3)
O1—P1—C1	112.28 (10)	C9—C10—H19A	119.8
C14—P1—C1	107.99 (10)	C11—C10—H19A	119.8
C8—P1—C1	106.42 (11)	C12—C11—C10	120.2 (3)
O2—C1—C2	113.15 (18)	C12—C11—H21A	119.9
O2—C1—P1	107.26 (15)	C10—C11—H21A	119.9
C2—C1—P1	110.76 (15)	C11—C12—C13	119.6 (3)
O2—C1—H3A	108.5	C11—C12—H20A	120.2
C2—C1—H3A	108.5	C13—C12—H20A	120.2
P1—C1—H3A	108.5	C12—C13—C8	120.6 (3)
C3—C2—C7	117.7 (2)	C12—C13—H11A	119.7
C3—C2—C1	122.4 (2)	C8—C13—H11A	119.7
C7—C2—C1	119.9 (2)	C19—C14—C15	118.8 (2)
C2—C3—C4	122.4 (3)	C19—C14—P1	123.04 (18)
C2—C3—C11	120.0 (2)	C15—C14—P1	118.1 (2)
C4—C3—C11	117.5 (3)	C14—C15—C16	120.0 (3)
C5—C4—C3	118.6 (3)	C14—C15—H13A	120.0
C5—C4—H26A	120.7	C16—C15—H13A	120.0
C3—C4—H26A	120.7	C17—C16—C15	120.4 (3)
C4—C5—C6	120.7 (3)	C17—C16—H33A	119.8
C4—C5—H12A	119.6	C15—C16—H33A	119.8
C6—C5—H12A	119.6	C18—C17—C16	120.6 (3)
C5—C6—C7	120.2 (3)	C18—C17—H22A	119.7
C5—C6—H27A	119.9	C16—C17—H22A	119.7
C7—C6—H27A	119.9	C17—C18—C19	120.1 (3)
C6—C7—C2	120.4 (3)	C17—C18—H17A	120.0

C6—C7—H10A	119.8	C19—C18—H17A	120.0
C2—C7—H10A	119.8	C14—C19—C18	120.1 (3)
C9—C8—C13	118.6 (3)	C14—C19—H14A	120.0
C9—C8—P1	116.43 (19)	C18—C19—H14A	120.0
C13—C8—P1	124.8 (2)	C1—O2—H2A	109.5
C10—C9—C8	120.6 (3)		
O1—P1—C1—O2	-162.66 (13)	C14—P1—C8—C13	98.3 (2)
C14—P1—C1—O2	-40.54 (17)	C1—P1—C8—C13	-17.4 (3)
C8—P1—C1—O2	75.19 (16)	C13—C8—C9—C10	0.1 (4)
O1—P1—C1—C2	-38.74 (18)	P1—C8—C9—C10	-175.5 (3)
C14—P1—C1—C2	83.38 (18)	C8—C9—C10—C11	-0.4 (5)
C8—P1—C1—C2	-160.89 (15)	C9—C10—C11—C12	0.7 (6)
O2—C1—C2—C3	-153.6 (2)	C10—C11—C12—C13	-0.6 (6)
P1—C1—C2—C3	85.9 (2)	C11—C12—C13—C8	0.3 (5)
O2—C1—C2—C7	26.2 (3)	C9—C8—C13—C12	0.0 (4)
P1—C1—C2—C7	-94.3 (2)	P1—C8—C13—C12	175.1 (3)
C7—C2—C3—C4	0.3 (4)	O1—P1—C14—C19	-165.4 (2)
C1—C2—C3—C4	-179.9 (3)	C8—P1—C14—C19	-43.2 (2)
C7—C2—C3—C11	-178.04 (19)	C1—P1—C14—C19	71.5 (2)
C1—C2—C3—C11	1.8 (3)	O1—P1—C14—C15	11.7 (2)
C2—C3—C4—C5	-0.2 (5)	C8—P1—C14—C15	133.8 (2)
C11—C3—C4—C5	178.2 (3)	C1—P1—C14—C15	-111.5 (2)
C3—C4—C5—C6	0.3 (5)	C19—C14—C15—C16	-0.8 (5)
C4—C5—C6—C7	-0.5 (5)	P1—C14—C15—C16	-178.0 (3)
C5—C6—C7—C2	0.7 (5)	C14—C15—C16—C17	-0.2 (6)
C3—C2—C7—C6	-0.6 (4)	C15—C16—C17—C18	1.0 (6)
C1—C2—C7—C6	179.6 (3)	C16—C17—C18—C19	-0.7 (6)
O1—P1—C8—C9	35.1 (2)	C15—C14—C19—C18	1.1 (4)
C14—P1—C8—C9	-86.4 (2)	P1—C14—C19—C18	178.1 (2)
C1—P1—C8—C9	157.82 (19)	C17—C18—C19—C14	-0.4 (5)
O1—P1—C8—C13	-140.1 (2)		

Hydrogen-bond geometry (Å, °)

<i>D</i> —H... <i>A</i>	<i>D</i> —H	H... <i>A</i>	<i>D</i> ... <i>A</i>	<i>D</i> —H... <i>A</i>
O2—H2A...O1 <sup>i</sup>	0.82	1.82	2.602 (2)	158
C1—H3A...O1 <sup>i</sup>	0.98	2.56	3.059 (2)	111
C16—H33A...O2 <sup>ii</sup>	0.93	2.56	3.318 (3)	139

Symmetry codes: (i)  $-x+1, y+1/2, -z+1/2$ ; (ii)  $-x, y-1/2, -z+1/2$ .