

N-[(1*aR*,5*aR*,8*R*,9*aR*)-1,1-Dichloro-1*a*,5,5,7-tetramethyl-1*a*,2,3,4,5,5*a*,8,9-octahydro-1*H*-benzo[*a*]-cyclopropa[*b*][7]annulen-8-yl]acetamide

Ahmed Benharref,^{a*} Lahcen El Ammari,^b Mohamed Saadi,^b Moha Taourirte,^c Abdelouahd Oukhrib^a and Moha Berraho^a

Received 21 March 2017

Accepted 29 March 2017

Edited by H. Stoeckli-Evans, University of Neuchâtel, Switzerland

Keywords: crystal structure; β himachalene; three fused rings; hydrogen bonding.

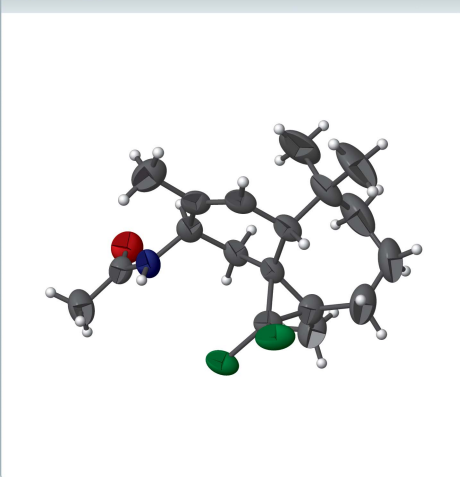
CCDC reference: 1540993

Structural data: full structural data are available from iucrdata.iucr.org

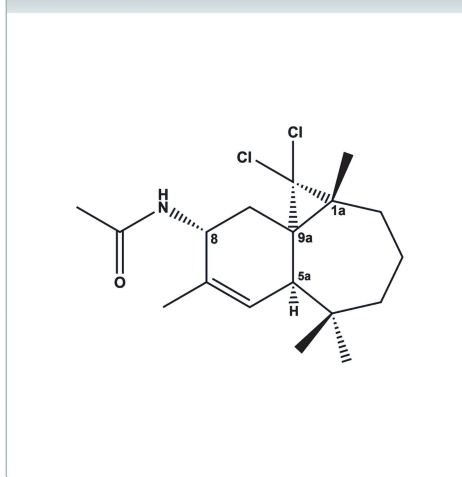
^aLaboratoire de Chimie des Substances Naturelles, Unité Associé au CNRST (URAC16), Faculté des Sciences Semlalia, BP 2390 Bd My Abdellah, Université Cadi Ayyad, 40000 Marrakech, Morocco, ^bLaboratoire de Chimie du Solide Appliquée, Faculty of Sciences, Mohammed V University in Rabat, Avenue Ibn Batouta BP 1014 Rabat, Morocco, and ^cLaboratoire de Chimie Bioorganique et Macromoléculaire, Faculté des Sciences et Techniques, Université Cadi Ayyad, 40000 Marrakech, Morocco. *Correspondence e-mail: benharref@uca.ac.ma

In the title compound, C₁₈H₂₇Cl₂NO, the cyclohexene ring has an envelope conformation, with the C atom at the 9*a* position as the flap. The cycloheptane ring, to which it is fused, has a boat conformation. The dihedral angle between their mean planes is 60.7 (2)°. The 1,1-dichloro-cyclopropane ring is inclined to these two ring mean planes by 88.5 (3) and 28.3 (3)°, respectively. In the crystal, molecules are linked by N—H...O hydrogen bonds, forming 6₁ helices along the *c*-axis direction. The absolute configuration of the molecule in the crystal could be fully confirmed from anomalous dispersion effects [Flack parameter = 0.020 (15)].

3D view



Chemical scheme



Structure description

The bicyclic sesquiterpene β -himachalene is the main constituent of the essential oil of the Atlas cedar (*Cedrus Atlantica*) (El Haib *et al.*, 2010; Loubidi *et al.*, 2014). The reactivity of these sesquiterpenes and their derivatives has been studied extensively by our team (El Jamili *et al.*, 2002; El Haib *et al.*, 2011; Benharref *et al.*, 2015, 2016) in order to prepare new products with biological properties. Indeed, these compounds have been tested, using the food-poisoning technique, for their potential antifungal activity against the phytopathogen *Botrytis cinerea* (Daoubi *et al.*, 2004). Herein, we report on the synthesis and crystal structure of the title modified β -himachalene compound.

The structure of the title compound, Fig. 1, is built up from a cycloheptane ring (C1/C3–C8), which is fused to a cyclohexene ring (C1/C8–C12), and a cyclopropane ring (C1–

Table 1
Hydrogen-bond geometry (Å, °).

$D-H\cdots A$	$D-H$	$H\cdots A$	$D\cdots A$	$D-H\cdots A$
$N1-H1\cdots O1^i$	0.86	2.20	3.059 (4)	175

Symmetry code: (i) $y, -x + y, z - \frac{1}{6}$.

C3). The six-membered ring has an envelope conformation with atom C1 (position 9a) as the flap [puckering parameters are: $Q_T = 0.456(4)$ Å, $\theta = 125.3(6)^\circ$ and $\varphi = 173.6(7)^\circ$], whereas the seven-membered ring displays a boat conformation [puckering parameters are: $Q_T = 1.1390(53)$ Å, $\theta = 89.19(30)^\circ$, $\varphi_2 = 311.1(3)^\circ$, $\varphi_3 = 24(2)^\circ$]. The dihedral angle between their mean planes is $60.7(2)^\circ$. The cyclopropane ring is normal to the mean plane of the cyclohexene ring, making a dihedral angle of $88.5(3)^\circ$.

In the crystal, molecules are linked by $N-H\cdots O$ hydrogen bonds, forming helices running along the c -axis direction (Fig. 2 and Table 1).

Synthesis and crystallization

3 g (10 mmol) of 2,2-dichloro-9,10-epoxy-3,7,7,10-tetramethyl-tricyclo[6.4.0.0^{1,3}]dodecane (Sbai *et al.*, 2002) was dissolved in 30 ml of CH_3CN and stirred at 273 K under argon. BF_3OEt (3% mmol) was added and the reaction mixture was stirred and monitored by TLC. After the completion of reaction, the solvent was removed and the residue obtained was chromatographed on silica, eluting with hexane–ethylacetate (90:10), which allowed the isolation of the title compound (yield 70%). It was recrystallized from ethyl acetate solution and yielded colourless prismatic crystals on slow evaporation of the solvent.

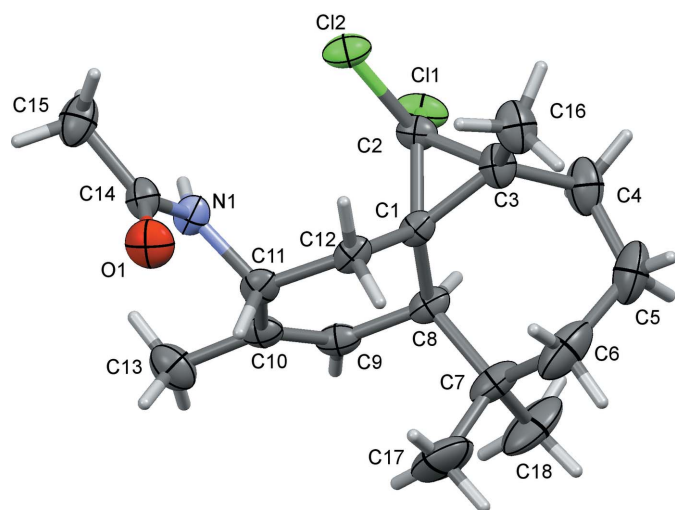


Figure 1
The molecular structure of the title compound, with the atom labelling. Displacement ellipsoids are drawn at the 30% probability level.

Table 2
Experimental details.

Crystal data	
Chemical formula	$C_{18}H_{27}Cl_2NO$
M_r	344.30
Crystal system, space group	Hexagonal, $P6_1$
Temperature (K)	296
a, c (Å)	10.5372 (4), 29.9710 (11)
V (Å ³)	2881.9 (2)
Z	6
Radiation type	Mo $K\alpha$
μ (mm ⁻¹)	0.34
Crystal size (mm)	0.24 × 0.2 × 0.15
Data collection	
Diffractometer	Bruker X8 APEX Diffractometer
Absorption correction	Multi-scan (SADABS; Bruker, 2009)
T_{min}, T_{max}	0.666, 0.746
No. of measured, independent and observed [$I > 2\sigma(I)$] reflections	53780, 3934, 3513
R_{int}	0.042
$(\sin \theta/\lambda)_{max}$ (Å ⁻¹)	0.625
Refinement	
$R[F^2 > 2\sigma(F^2)], wR(F^2), S$	0.039, 0.109, 1.08
No. of reflections	3934
No. of parameters	204
No. of restraints	1
H-atom treatment	H-atom parameters constrained
$\Delta\rho_{max}, \Delta\rho_{min}$ (e Å ⁻³)	0.45, -0.22
Absolute structure	Flack x determined using 1571 quotients $[(I^+) - (I^-)] / [(I^+) + (I^-)]$ (Parsons <i>et al.</i> , 2013)
Absolute structure parameter	0.020 (15)

Computer programs: APEX2 and SAINT (Bruker, 2009), SHELXT2014/7 (Sheldrick, 2015a), Mercury (Macrae *et al.*, 2008), SHELXL2014/7 (Sheldrick, 2015b) and publCIF (Westrip, 2010).

Refinement

Crystal data, data collection and structure refinement details are summarized in Table 2. Owing to the presence of the Cl

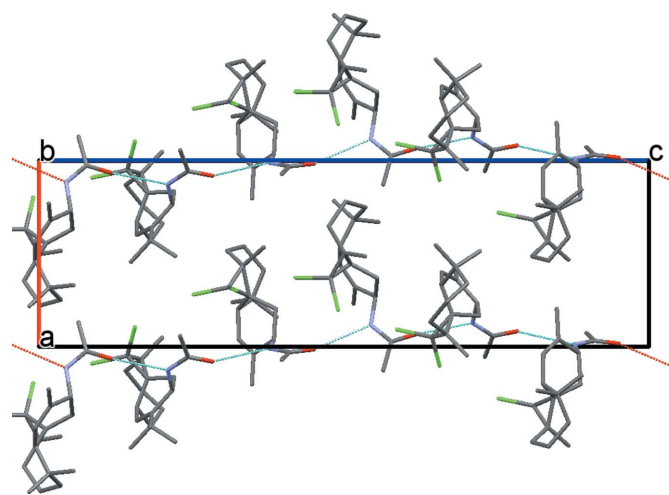


Figure 2
A view along the a axis of the crystal packing of the title compound, showing molecules linked by $N-H\cdots O$ hydrogen bonds (dashed lines; see Table 1). For clarity, C-bound H atoms have been omitted.

atoms, the absolute configuration could be fully confirmed from anomalous dispersion effects [Flack parameter = 0.020 (15)].

Acknowledgements

The authors thank the Unit of Support for Technical and Scientific Research (UATRS, CNRST) for the X-ray measurements.

References

- Benharref, A., Elkarroumi, J., El Ammari, L., Saadi, M. & Berraho, M. (2015). *Acta Cryst.* **E71**, o659–o660.
- Benharref, A., Oukhrib, A., Ait Elhad, M., El Ammari, L., Saadi, M. & Berraho, M. (2016). *IUCrData*, **1**, x160703.
- Bruker (2009). *APEX2*, *SAINT* and *SADABS*. Bruker AXS Inc., Madison, Wisconsin, USA.
- Daoubi, M., Durán-Patrón, R., Hmamouchi, M., Hernández-Galán, R., Benharref, A. & Collado, I. G. (2004). *Pest Manag. Sci.* **60**, 927–932.
- El Haib, A., Benharref, A., Parrès-Maynadié, S., Manoury, E., Urrutigoity, M. & Gouygou, M. (2011). *Tetrahedron Asymmetry*, **22**, 101–108.
- El Jamili, H., Auhmani, A., Dakir, M., Lassaba, E., Benharref, A., Pierrot, M., Chiaroni, A. & Riche, C. (2002). *Tetrahedron Lett.* **43**, 6645–6648.
- Haib, A. E., Benharref, A., Parrès-Maynadié, S., Manoury, E., Daran, J. C., Urrutigoity, M. & Gouygou, M. (2010). *Tetrahedron Asymmetry*, **21**, 1272–1277.
- Loubidi, M., Agustin, D., Benharref, A. & Poli, R. (2014). *C. R. Chim.* **17**, 549–556.
- Macrae, C. F., Bruno, I. J., Chisholm, J. A., Edgington, P. R., McCabe, P., Pidcock, E., Rodriguez-Monge, L., Taylor, R., van de Streek, J. & Wood, P. A. (2008). *J. Appl. Cryst.* **41**, 466–470.
- Parsons, S., Flack, H. D. & Wagner, T. (2013). *Acta Cryst.* **B69**, 249–259.
- Sbai, F., Dakir, M., Auhmani, A., El Jamili, H., Akssira, M., Benharref, A., Kenz, A. & Pierrot, M. (2002). *Acta Cryst.* **C58**, o518–o520.
- Sheldrick, G. M. (2015a). *Acta Cryst.* **A71**, 3–8.
- Sheldrick, G. M. (2015b). *Acta Cryst.* **C71**, 3–8.
- Westrip, S. P. (2010). *J. Appl. Cryst.* **43**, 920–925.

full crystallographic data

IUCrData (2017). 2, x170492 [https://doi.org/10.1107/S2414314617004928]

***N*}-[(1*aR*,5*aR*,8*R*,9*aR*)-1,1-Dichloro-1*a*,5,5,7-tetramethyl-1*a*,2,3,4,5,5*a*,8,9-octahydro-1*H*-benzo[*a*]cyclopropa[*b*][7]annulen-8-yl]acetamide**

Ahmed Benharref, Lahcen El Ammari, Mohamed Saadi, Moha Taourirte, Abdelouahd Oukhrib and Moha Berraho

N}-[(1*aR*,5*aR*,8*R*,9*aR*)-1,1-Dichloro-1*a*,5,5,7-tetramethyl-1*a*,2,3,4,5,5*a*,8,9-octahydro-1*H*-benzo[*a*]cyclopropa[*b*][7]annulen-8-yl]acetamide

Crystal data

C₁₈H₂₇Cl₂NO

M_r = 344.30

Hexagonal, *P*6₁

a = 10.5372 (4) Å

c = 29.9710 (11) Å

V = 2881.9 (2) Å³

Z = 6

F(000) = 1104

D_x = 1.190 Mg m⁻³

Mo *K*α radiation, λ = 0.71073 Å

Cell parameters from 3934 reflections

θ = 2.3–26.4°

μ = 0.34 mm⁻¹

T = 296 K

Prismatic, colourless

0.24 × 0.2 × 0.15 mm

Data collection

Bruker X8 APEX Diffractometer

Radiation source: fine-focus sealed tube

φ and ω scans

Absorption correction: multi-scan

(SADABS; Bruker, 2009)

T_{min} = 0.666, *T_{max}* = 0.746

53780 measured reflections

3934 independent reflections

3513 reflections with *I* > 2σ(*I*)

R_{int} = 0.042

θ_{max} = 26.4°, θ_{min} = 2.3°

h = -13→13

k = -13→13

l = -37→37

Refinement

Refinement on *F*²

Least-squares matrix: full

R [*F*² > 2σ(*F*²)] = 0.039

wR (*F*²) = 0.109

S = 1.08

3934 reflections

204 parameters

1 restraint

Primary atom site location: structure-invariant

direct methods

Secondary atom site location: difference Fourier

map

Hydrogen site location: inferred from neighbouring sites

H-atom parameters constrained

w = 1/[σ²(*F_o*²) + (0.0665*P*)² + 0.3403*P*]

where *P* = (*F_o*² + 2*F_c*²)/3

(Δ/σ)_{max} < 0.001

Δρ_{max} = 0.45 e Å⁻³

Δρ_{min} = -0.22 e Å⁻³

Absolute structure: Flack *x* determined using

1571 quotients [(*F*⁺)-(*F*)]/[(*F*⁺)+(*F*)] (Parsons *et al.*, 2013)

Absolute structure parameter: 0.020 (15)

Special details

Geometry. All esds (except the esd in the dihedral angle between two l.s. planes) are estimated using the full covariance matrix. The cell esds are taken into account individually in the estimation of esds in distances, angles and torsion angles; correlations between esds in cell parameters are only used when they are defined by crystal symmetry. An approximate (isotropic) treatment of cell esds is used for estimating esds involving l.s. planes.

Fractional atomic coordinates and isotropic or equivalent isotropic displacement parameters (\AA^2)

	<i>x</i>	<i>y</i>	<i>z</i>	$U_{\text{iso}}^*/U_{\text{eq}}$
C18	0.5450 (7)	0.7825 (6)	0.1505 (3)	0.128 (3)
H18A	0.5000	0.7884	0.1233	0.192*
H18B	0.6077	0.7429	0.1443	0.192*
H18C	0.6019	0.8787	0.1631	0.192*
C17	0.5129 (8)	0.6699 (7)	0.2229 (2)	0.123 (3)
H17A	0.5735	0.6318	0.2126	0.184*
H17B	0.4447	0.6044	0.2447	0.184*
H17C	0.5732	0.7644	0.2362	0.184*
Cl1	0.09118 (10)	0.37089 (13)	0.08694 (3)	0.0641 (3)
Cl2	-0.10316 (9)	0.19825 (11)	0.15688 (3)	0.0607 (3)
N1	0.1265 (4)	0.1158 (3)	0.21087 (9)	0.0511 (7)
H1	0.1080	0.0828	0.1840	0.061*
C2	0.0507 (4)	0.3694 (4)	0.14440 (11)	0.0469 (7)
C10	0.3586 (4)	0.3202 (4)	0.18513 (12)	0.0530 (8)
C9	0.3998 (4)	0.4388 (4)	0.16039 (12)	0.0520 (8)
H9	0.4794	0.4661	0.1415	0.062*
C1	0.1732 (4)	0.4450 (3)	0.17758 (10)	0.0430 (7)
C11	0.2348 (4)	0.2701 (4)	0.21848 (11)	0.0498 (8)
H11	0.2777	0.2748	0.2479	0.060*
O1	0.0812 (4)	0.0650 (4)	0.28373 (10)	0.0747 (9)
C12	0.1652 (4)	0.3679 (4)	0.22130 (10)	0.0466 (7)
H12A	0.0634	0.3083	0.2300	0.056*
H12B	0.2148	0.4410	0.2443	0.056*
C8	0.3304 (4)	0.5331 (4)	0.15991 (11)	0.0494 (8)
H8	0.3227	0.5542	0.1285	0.059*
C3	0.0687 (4)	0.5032 (4)	0.16756 (12)	0.0565 (9)
C14	0.0566 (4)	0.0260 (4)	0.24435 (12)	0.0510 (8)
C13	0.4342 (6)	0.2307 (7)	0.18241 (17)	0.0803 (13)
H13A	0.3695	0.1377	0.1689	0.120*
H13B	0.4596	0.2155	0.2119	0.120*
H13C	0.5214	0.2821	0.1647	0.120*
C15	-0.0558 (6)	-0.1280 (5)	0.23115 (18)	0.0775 (13)
H15A	-0.0320	-0.1959	0.2448	0.116*
H15B	-0.0558	-0.1376	0.1993	0.116*
H15C	-0.1510	-0.1487	0.2409	0.116*
C4	0.1314 (7)	0.6467 (6)	0.14176 (18)	0.0827 (15)
H4A	0.0515	0.6616	0.1325	0.099*
H4B	0.1795	0.6396	0.1151	0.099*
C16	-0.0474 (6)	0.4854 (6)	0.20148 (16)	0.0751 (12)

H16A	-0.1333	0.4713	0.1860	0.113*
H16B	-0.0095	0.5718	0.2196	0.113*
H16C	-0.0723	0.4020	0.2201	0.113*
C7	0.4279 (5)	0.6846 (5)	0.18313 (17)	0.0756 (13)
C5	0.2408 (8)	0.7790 (6)	0.1690 (2)	0.1000 (19)
H5A	0.1872	0.8152	0.1860	0.120*
H5B	0.3049	0.8560	0.1486	0.120*
C6	0.3382 (8)	0.7484 (6)	0.2021 (3)	0.113 (2)
H6A	0.4051	0.8399	0.2167	0.136*
H6B	0.2744	0.6820	0.2250	0.136*

Atomic displacement parameters (Å²)

	U^{11}	U^{22}	U^{33}	U^{12}	U^{13}	U^{23}
C18	0.098 (4)	0.062 (3)	0.151 (6)	-0.014 (3)	0.053 (4)	-0.003 (4)
C17	0.117 (5)	0.088 (4)	0.106 (5)	0.008 (3)	-0.042 (4)	-0.035 (4)
C11	0.0514 (5)	0.1048 (8)	0.0286 (4)	0.0334 (5)	0.0005 (3)	-0.0010 (4)
C12	0.0445 (4)	0.0679 (6)	0.0495 (5)	0.0128 (4)	0.0036 (4)	-0.0046 (4)
N1	0.0697 (19)	0.0473 (15)	0.0320 (13)	0.0262 (14)	-0.0014 (12)	0.0003 (11)
C2	0.0447 (16)	0.061 (2)	0.0299 (15)	0.0226 (15)	0.0048 (13)	0.0045 (13)
C10	0.0502 (18)	0.062 (2)	0.0375 (16)	0.0212 (16)	-0.0087 (14)	-0.0015 (15)
C9	0.0430 (16)	0.062 (2)	0.0359 (17)	0.0150 (15)	-0.0008 (13)	-0.0028 (15)
C1	0.0501 (17)	0.0399 (15)	0.0299 (14)	0.0157 (14)	0.0044 (13)	0.0001 (12)
C11	0.062 (2)	0.0530 (18)	0.0273 (14)	0.0233 (16)	-0.0061 (13)	0.0004 (13)
O1	0.091 (2)	0.093 (2)	0.0381 (14)	0.0438 (18)	0.0096 (13)	0.0121 (13)
C12	0.059 (2)	0.0438 (16)	0.0258 (13)	0.0172 (15)	0.0029 (13)	-0.0016 (12)
C8	0.0501 (17)	0.0469 (17)	0.0328 (15)	0.0105 (14)	0.0066 (14)	0.0014 (13)
C3	0.070 (2)	0.062 (2)	0.043 (2)	0.0369 (19)	0.0142 (16)	0.0122 (16)
C14	0.062 (2)	0.055 (2)	0.0431 (19)	0.0338 (17)	0.0100 (15)	0.0097 (15)
C13	0.089 (3)	0.106 (4)	0.061 (3)	0.060 (3)	-0.001 (2)	0.012 (2)
C15	0.089 (3)	0.056 (2)	0.080 (3)	0.031 (2)	0.027 (2)	0.013 (2)
C4	0.117 (4)	0.078 (3)	0.069 (3)	0.061 (3)	0.027 (3)	0.029 (2)
C16	0.095 (3)	0.086 (3)	0.064 (3)	0.059 (3)	0.024 (2)	0.010 (2)
C7	0.068 (3)	0.047 (2)	0.072 (3)	-0.0012 (19)	0.010 (2)	-0.0086 (19)
C5	0.139 (5)	0.057 (3)	0.106 (4)	0.050 (3)	0.030 (4)	0.021 (3)
C6	0.121 (5)	0.060 (3)	0.121 (5)	0.016 (3)	0.033 (4)	-0.022 (3)

Geometric parameters (Å, °)

C18—C7	1.506 (7)	C12—H12A	0.9700
C18—H18A	0.9600	C12—H12B	0.9700
C18—H18B	0.9600	C8—C7	1.565 (5)
C18—H18C	0.9600	C8—H8	0.9800
C17—C7	1.544 (9)	C3—C4	1.524 (6)
C17—H17A	0.9600	C3—C16	1.529 (5)
C17—H17B	0.9600	C14—C15	1.506 (6)
C17—H17C	0.9600	C13—H13A	0.9600
C11—C2	1.772 (3)	C13—H13B	0.9600

C12—C2	1.760 (4)	C13—H13C	0.9600
N1—C14	1.322 (5)	C15—H15A	0.9600
N1—C11	1.464 (5)	C15—H15B	0.9600
N1—H1	0.8600	C15—H15C	0.9600
C2—C3	1.495 (5)	C4—C5	1.528 (9)
C2—C1	1.504 (5)	C4—H4A	0.9700
C10—C9	1.326 (6)	C4—H4B	0.9700
C10—C13	1.510 (7)	C16—H16A	0.9600
C10—C11	1.514 (5)	C16—H16B	0.9600
C9—C8	1.500 (6)	C16—H16C	0.9600
C9—H9	0.9300	C7—C6	1.518 (9)
C1—C12	1.522 (4)	C5—C6	1.572 (11)
C1—C8	1.532 (4)	C5—H5A	0.9700
C1—C3	1.533 (5)	C5—H5B	0.9700
C11—C12	1.537 (5)	C6—H6A	0.9700
C11—H11	0.9800	C6—H6B	0.9700
O1—C14	1.234 (5)		
C7—C18—H18A	109.5	C2—C3—C4	119.2 (3)
C7—C18—H18B	109.5	C2—C3—C16	118.5 (3)
H18A—C18—H18B	109.5	C4—C3—C16	112.4 (4)
C7—C18—H18C	109.5	C2—C3—C1	59.5 (2)
H18A—C18—H18C	109.5	C4—C3—C1	117.1 (3)
H18B—C18—H18C	109.5	C16—C3—C1	120.7 (3)
C7—C17—H17A	109.5	O1—C14—N1	122.6 (4)
C7—C17—H17B	109.5	O1—C14—C15	122.1 (4)
H17A—C17—H17B	109.5	N1—C14—C15	115.4 (4)
C7—C17—H17C	109.5	C10—C13—H13A	109.5
H17A—C17—H17C	109.5	C10—C13—H13B	109.5
H17B—C17—H17C	109.5	H13A—C13—H13B	109.5
C14—N1—C11	121.5 (3)	C10—C13—H13C	109.5
C14—N1—H1	119.2	H13A—C13—H13C	109.5
C11—N1—H1	119.2	H13B—C13—H13C	109.5
C3—C2—C1	61.5 (2)	C14—C15—H15A	109.5
C3—C2—C12	119.0 (2)	C14—C15—H15B	109.5
C1—C2—C12	120.6 (2)	H15A—C15—H15B	109.5
C3—C2—C11	121.7 (3)	C14—C15—H15C	109.5
C1—C2—C11	119.9 (2)	H15A—C15—H15C	109.5
C12—C2—C11	108.06 (19)	H15B—C15—H15C	109.5
C9—C10—C13	122.2 (4)	C3—C4—C5	112.9 (4)
C9—C10—C11	121.1 (4)	C3—C4—H4A	109.0
C13—C10—C11	116.7 (4)	C5—C4—H4A	109.0
C10—C9—C8	126.3 (3)	C3—C4—H4B	109.0
C10—C9—H9	116.9	C5—C4—H4B	109.0
C8—C9—H9	116.9	H4A—C4—H4B	107.8
C2—C1—C12	118.9 (3)	C3—C16—H16A	109.5
C2—C1—C8	118.3 (3)	C3—C16—H16B	109.5
C12—C1—C8	112.0 (3)	H16A—C16—H16B	109.5

C2—C1—C3	59.0 (2)	C3—C16—H16C	109.5
C12—C1—C3	121.5 (3)	H16A—C16—H16C	109.5
C8—C1—C3	117.7 (3)	H16B—C16—H16C	109.5
N1—C11—C10	110.0 (3)	C18—C7—C6	114.7 (5)
N1—C11—C12	112.7 (3)	C18—C7—C17	104.6 (6)
C10—C11—C12	114.8 (3)	C6—C7—C17	106.0 (5)
N1—C11—H11	106.2	C18—C7—C8	107.8 (4)
C10—C11—H11	106.2	C6—C7—C8	112.4 (4)
C12—C11—H11	106.2	C17—C7—C8	111.1 (4)
C1—C12—C11	113.2 (3)	C4—C5—C6	115.0 (4)
C1—C12—H12A	108.9	C4—C5—H5A	108.5
C11—C12—H12A	108.9	C6—C5—H5A	108.5
C1—C12—H12B	108.9	C4—C5—H5B	108.5
C11—C12—H12B	108.9	C6—C5—H5B	108.5
H12A—C12—H12B	107.8	H5A—C5—H5B	107.5
C9—C8—C1	109.5 (3)	C7—C6—C5	118.0 (5)
C9—C8—C7	112.5 (3)	C7—C6—H6A	107.8
C1—C8—C7	115.1 (3)	C5—C6—H6A	107.8
C9—C8—H8	106.4	C7—C6—H6B	107.8
C1—C8—H8	106.4	C5—C6—H6B	107.8
C7—C8—H8	106.4	H6A—C6—H6B	107.1

Hydrogen-bond geometry (Å, °)

<i>D</i> —H \cdots <i>A</i>	<i>D</i> —H	H \cdots <i>A</i>	<i>D</i> \cdots <i>A</i>	<i>D</i> —H \cdots <i>A</i>
N1—H1 \cdots O1 ⁱ	0.86	2.20	3.059 (4)	175

Symmetry code: (i) *y*, $-x+y$, $z-1/6$.