

2-Amino-4-methylpyridinium 4-hydroxybenzoate

P. Sivakumar,^{a,b} S. Sudhakar,^c S. Israel^{d*} and G. Chakkaravarthi^{b*}

^aResearch and Development Centre, Bharathiar University, Coimbatore 641 046, India, ^bDepartment of Physics, CPCL Polytechnic College, Chennai 600 068, India, ^cDepartment of Physics, Alagappa University, Karaikkudi 630 003, India, and ^dPost Graduate and Research Department of Physics, The American College, Madurai 625 002, India.
*Correspondence e-mail: israel.samuel@gmail.com, chakkaravarthi_2005@yahoo.com

Received 4 September 2016

Accepted 7 September 2016

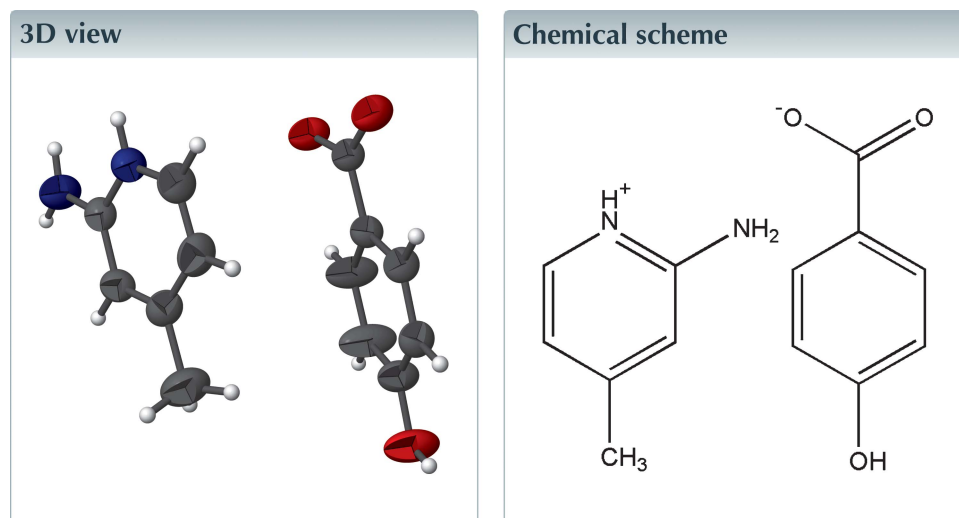
Edited by M. Bolte, Goethe-Universität Frankfurt Germany

Keywords: molecular salt; crystal structure; hydrogen bonding.

CCDC reference: 1503086

Structural data: full structural data are available from iucrdata.iucr.org

In the title molecular salt, $C_6H_9N_2^+ \cdot C_7H_5O_3^-$, the cation is protonated at the pyridine N atom and the anion is deprotonated. The pyridine ring is inclined at an angle of 24.96 (11)° to the benzene ring. In the crystal, adjacent anions and cations are linked by a pair of N—H...O hydrogen bonds, generating an $R_2^2(8)$ ring motif; these motifs are further connected by another N—H...O and O—H...O hydrogen bonds into a three-dimensional network. The crystal structure also features weak C—H...O interactions.



Structure description

Pyridine derivatives are known to exhibit anti-inflammatory (Abdel-Alim *et al.*, 2005) and anxiolytic (Spanka *et al.*, 2010) activities.

We report the synthesis and the crystal structure of the title molecular salt (Fig. 1). The asymmetric unit comprises a 2-amino-4-methylpyridinium cation protonated at the pyridine N (N1) atom and a deprotonated 4-methylbenzoate anion. The benzene ring (C7–C12) makes a dihedral angle of 24.96 (11)° with the pyridine ring (N1/C1–C5). Bond lengths are comparable with those in reported structures (Sivakumar *et al.*, 2016*a,b*).

In the crystal, anions and cations are linked by N1—H1...O2ⁱ and N2—H2A...O1ⁱ hydrogen bonds, generating an $R_2^2(8)$ ring motif (Fig. 2) and further connected by N2—H2B...O2ⁱⁱ and O—H...Oⁱⁱⁱ hydrogen bonds (Table 1) into an infinite three-dimensional network. The crystal structure also features weak interionic C—H...O interactions (Table 1, Fig. 3).

Table 1
Hydrogen-bond geometry (Å, °).

| $D-H\cdots A$ | $D-H$ | $H\cdots A$ | $D\cdots A$ | $D-H\cdots A$ |
|------------------------|----------|-------------|-------------|---------------|
| $N1-H1\cdots O2^i$ | 0.87 (1) | 1.81 (1) | 2.666 (2) | 174 (3) |
| $N2-H2A\cdots O1^i$ | 0.86 (1) | 1.95 (1) | 2.806 (3) | 172 (3) |
| $N2-H2B\cdots O2^{ii}$ | 0.86 (1) | 2.05 (1) | 2.887 (3) | 167 (2) |
| $O3-H3\cdots O1^{iii}$ | 0.83 (1) | 1.87 (1) | 2.677 (2) | 167 (3) |
| $C6-H6C\cdots O1^{iv}$ | 0.96 | 2.58 | 3.505 (4) | 161 |

Symmetry codes: (i) $-x+1, -y, -z+2$; (ii) $-x+1, y+\frac{1}{2}, -z+\frac{3}{2}$; (iii) $-x, y+\frac{1}{2}, -z+\frac{3}{2}$; (iv) $x, -y+\frac{1}{2}, z-\frac{1}{2}$.

Synthesis and crystallization

The title salt was synthesized using the raw materials 4-hydroxy benzoic acid (0.69 g) and 2-amino 4-methylpyridine (0.54 g) in an equimolar ratio. When these reactants were dissolved in 10 ml of methanol a white precipitate was formed. The precipitate was dissolved in 20 ml of water and kept at room temperature for slow evaporation. After 30 days, crystals suitable for X-ray diffraction were harvested.

Refinement

Crystal data, data collection and structure refinement details are summarized in Table 2. The reflection (100) was omitted during refinement because it was obscured by the beamstop.

Table 2
Experimental details.

| | |
|--|--|
| Crystal data | |
| Chemical formula | $C_6H_9N_2^+ \cdot C_7H_5O_3^{3-}$ |
| M_r | 246.26 |
| Crystal system, space group | Monoclinic, $P2_1/c$ |
| Temperature (K) | 295 |
| a, b, c (Å) | 13.069 (1), 9.1387 (6), 11.3367 (9) |
| β (°) | 112.841 (3) |
| V (Å ³) | 1247.81 (16) |
| Z | 4 |
| Radiation type | Mo $K\alpha$ |
| μ (mm ⁻¹) | 0.10 |
| Crystal size (mm) | 0.26 × 0.24 × 0.18 |
| Data collection | |
| Diffractometer | Bruker Kappa APEXII CCD |
| Absorption correction | Multi-scan (SADABS; Bruker, 2004) |
| T_{min}, T_{max} | 0.682, 0.747 |
| No. of measured, independent and observed [$I > 2\sigma(I)$] reflections | 21655, 4159, 2301 |
| R_{int} | 0.034 |
| $(\sin \theta/\lambda)_{max}$ (Å ⁻¹) | 0.769 |
| Refinement | |
| $R[F^2 > 2\sigma(F^2)], wR(F^2), S$ | 0.069, 0.199, 1.04 |
| No. of reflections | 4159 |
| No. of parameters | 179 |
| No. of restraints | 4 |
| H-atom treatment | H atoms treated by a mixture of independent and constrained refinement |
| $\Delta\rho_{max}, \Delta\rho_{min}$ (e Å ⁻³) | 0.23, -0.26 |

Computer programs: APEX2 and SAINT (Bruker, 2004), SHELXS97 (Sheldrick, 2008), SHELXL2016 (Sheldrick, 2015) and PLATON (Spek, 2009).

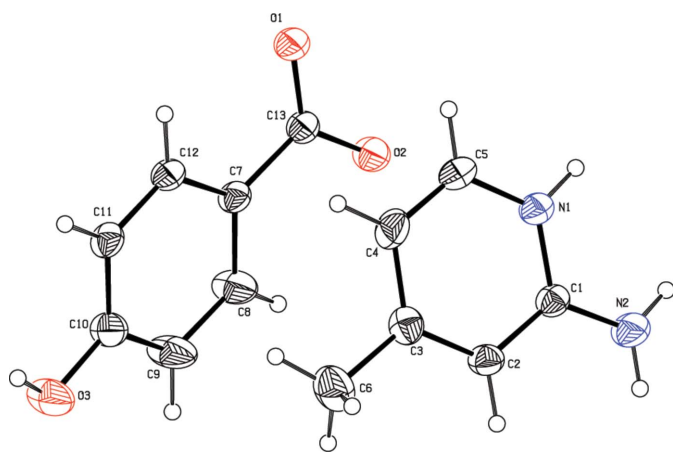


Figure 1
The molecular structure of the title molecular salt, with atom labelling and 30% probability displacement ellipsoids.

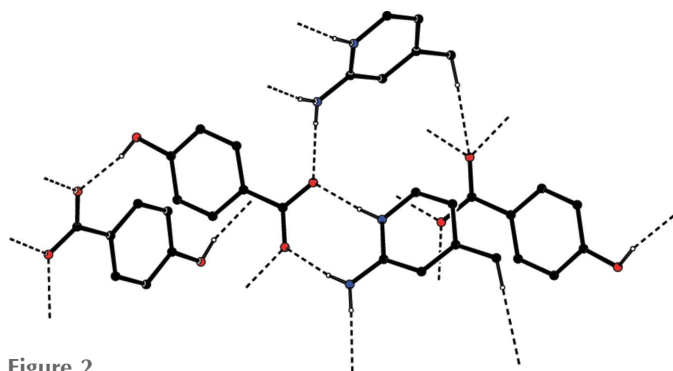


Figure 2
A partial view of the crystal packing showing the $R_2^2(8)$ ring motif.

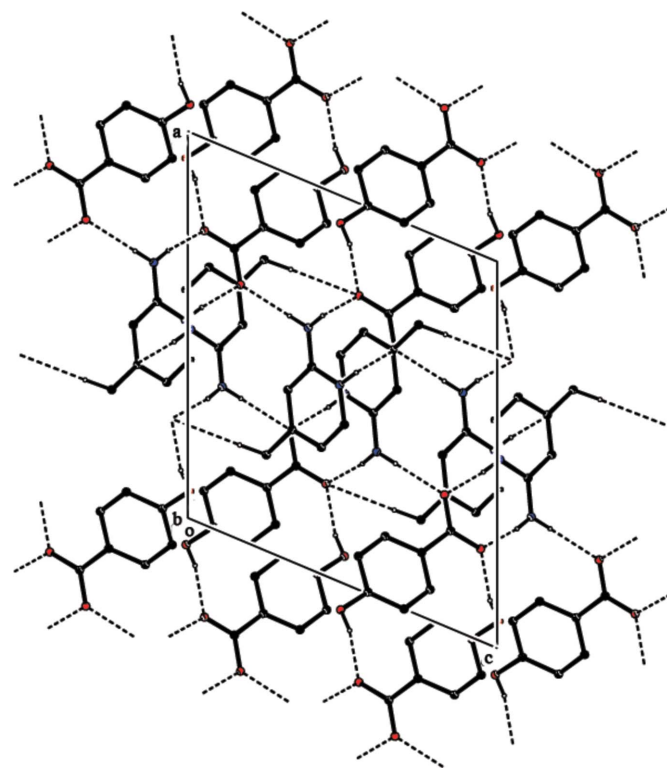


Figure 3
The crystal packing of the title molecular salt viewed along b axis. The hydrogen bonds are shown as dashed lines. H atoms not involved in hydrogen bonds have been omitted for clarity.

Acknowledgements

The authors acknowledge the SAIF, IIT, Madras for the data collection.

References

- Abdel-Alim, A. M., El-Shorbagi, A. A., Abdel-Moty, S. G. & Abdel-Allah, H. H. M. (2005). *Arch. Pharm. Res.* **28**, 637–647.
- Bruker (2004). *APEX2, SAINT and SADABS*. Bruker AXS Inc., Madison, Wisconsin, USA.
- Sheldrick, G. M. (2008). *Acta Cryst.* **A64**, 112–122.
- Sheldrick, G. M. (2015). *Acta Cryst.* **A71**, 3–8.
- Sivakumar, P., Sudhahar, S., Gunasekaran, B., Israel, S. & Chakkaravarthi, G. (2016*b*). *IUCrData*, **1**, x160817.
- Sivakumar, P., Sudhahar, S., Israel, S. & Chakkaravarthi, G. (2016*a*). *IUCrData*, **1**, x160747.
- Spanka, C., Glatthar, R., Desrayaud, S., Fendt, M., Orain, D., Troxler, T. & Vranesic, I. (2010). *Bioorg. Med. Chem. Lett.* **20**, 184–188.
- Spek, A. L. (2009). *Acta Cryst.* **D65**, 148–155.

full crystallographic data

IUCrData (2016). **1**, x161425 [doi:10.1107/S2414314616014255]

2-Amino-4-methylpyridinium 4-hydroxybenzoate

P. Sivakumar, S. Sudhahar, S. Israel and G. Chakkaravarthi

2-Amino-4-methylpyridinium 4-hydroxybenzoate

Crystal data

$C_6H_9N_2^+ \cdot C_7H_5O_3^-$

$M_r = 246.26$

Monoclinic, $P2_1/c$

$a = 13.069$ (1) Å

$b = 9.1387$ (6) Å

$c = 11.3367$ (9) Å

$\beta = 112.841$ (3)°

$V = 1247.81$ (16) Å³

$Z = 4$

$F(000) = 520$

$D_x = 1.311$ Mg m⁻³

Mo $K\alpha$ radiation, $\lambda = 0.71073$ Å

Cell parameters from 5844 reflections

$\theta = 2.8$ – 32.5 °

$\mu = 0.10$ mm⁻¹

$T = 295$ K

Block, colourless

$0.26 \times 0.24 \times 0.18$ mm

Data collection

Bruker Kappa APEXII CCD
diffractometer

ω and ϕ scan

Absorption correction: multi-scan
(SADABS; Bruker, 2004)

$T_{\min} = 0.682$, $T_{\max} = 0.747$

21655 measured reflections

4159 independent reflections

2301 reflections with $I > 2\sigma(I)$

$R_{\text{int}} = 0.034$

$\theta_{\max} = 33.1$ °, $\theta_{\min} = 2.8$ °

$h = -19 \rightarrow 19$

$k = -13 \rightarrow 13$

$l = -17 \rightarrow 16$

Refinement

Refinement on F^2

Least-squares matrix: full

$R[F^2 > 2\sigma(F^2)] = 0.069$

$wR(F^2) = 0.199$

$S = 1.04$

4159 reflections

179 parameters

4 restraints

Hydrogen site location: mixed

H atoms treated by a mixture of independent
and constrained refinement

$w = 1/[\sigma^2(F_o^2) + (0.0694P)^2 + 0.7446P]$

where $P = (F_o^2 + 2F_c^2)/3$

$(\Delta/\sigma)_{\max} < 0.001$

$\Delta\rho_{\max} = 0.23$ e Å⁻³

$\Delta\rho_{\min} = -0.26$ e Å⁻³

Special details

Geometry. All esds (except the esd in the dihedral angle between two l.s. planes) are estimated using the full covariance matrix. The cell esds are taken into account individually in the estimation of esds in distances, angles and torsion angles; correlations between esds in cell parameters are only used when they are defined by crystal symmetry. An approximate (isotropic) treatment of cell esds is used for estimating esds involving l.s. planes.

Fractional atomic coordinates and isotropic or equivalent isotropic displacement parameters (Å²)

| | <i>x</i> | <i>y</i> | <i>z</i> | $U_{\text{iso}}^*/U_{\text{eq}}$ |
|----|--------------|------------|--------------|----------------------------------|
| C1 | 0.52644 (16) | 0.3239 (2) | 0.90045 (18) | 0.0392 (4) |

| | | | | |
|-----|---------------|---------------|--------------|-------------|
| C2 | 0.44042 (17) | 0.4162 (2) | 0.82341 (19) | 0.0425 (5) |
| H2 | 0.451228 | 0.474391 | 0.761933 | 0.051* |
| C3 | 0.34175 (17) | 0.4219 (2) | 0.8372 (2) | 0.0465 (5) |
| C4 | 0.32794 (19) | 0.3336 (3) | 0.9316 (2) | 0.0555 (6) |
| H4 | 0.260897 | 0.334077 | 0.942314 | 0.067* |
| C5 | 0.41194 (19) | 0.2487 (3) | 1.0062 (2) | 0.0531 (6) |
| H5 | 0.402979 | 0.192189 | 1.069749 | 0.064* |
| C6 | 0.2488 (2) | 0.5176 (4) | 0.7536 (3) | 0.0755 (8) |
| H6A | 0.261945 | 0.616509 | 0.784452 | 0.113* |
| H6B | 0.179993 | 0.483581 | 0.755475 | 0.113* |
| H6C | 0.245072 | 0.514134 | 0.667401 | 0.113* |
| C7 | 0.16520 (15) | 0.0386 (2) | 0.75602 (18) | 0.0382 (4) |
| C8 | 0.1671 (2) | 0.0718 (3) | 0.6378 (2) | 0.0663 (8) |
| H8 | 0.223915 | 0.034629 | 0.616305 | 0.080* |
| C9 | 0.0869 (2) | 0.1585 (4) | 0.5514 (3) | 0.0761 (9) |
| H9 | 0.088821 | 0.177112 | 0.471584 | 0.091* |
| C10 | 0.00385 (18) | 0.2180 (3) | 0.5823 (2) | 0.0504 (5) |
| C11 | -0.00016 (16) | 0.1854 (2) | 0.6991 (2) | 0.0429 (5) |
| H11 | -0.055959 | 0.224857 | 0.721143 | 0.051* |
| C12 | 0.07840 (16) | 0.0946 (2) | 0.78317 (19) | 0.0408 (4) |
| H12 | 0.073067 | 0.070264 | 0.860227 | 0.049* |
| C13 | 0.25253 (16) | -0.0537 (2) | 0.84967 (18) | 0.0389 (4) |
| N1 | 0.50941 (15) | 0.2439 (2) | 0.99064 (17) | 0.0435 (4) |
| N2 | 0.62321 (17) | 0.3102 (3) | 0.8892 (2) | 0.0581 (5) |
| O1 | 0.23876 (12) | -0.09774 (19) | 0.94694 (14) | 0.0525 (4) |
| O2 | 0.33935 (12) | -0.08189 (18) | 0.83009 (14) | 0.0511 (4) |
| O3 | -0.07119 (16) | 0.3049 (2) | 0.49415 (18) | 0.0724 (6) |
| H1 | 0.560 (2) | 0.189 (3) | 1.045 (2) | 0.090 (10)* |
| H2A | 0.6699 (18) | 0.247 (2) | 0.936 (2) | 0.067 (8)* |
| H2B | 0.6333 (19) | 0.356 (2) | 0.8288 (17) | 0.051 (7)* |
| H3 | -0.115 (2) | 0.339 (3) | 0.523 (3) | 0.076* |

Atomic displacement parameters (Å²)

| | U^{11} | U^{22} | U^{33} | U^{12} | U^{13} | U^{23} |
|-----|-------------|-------------|-------------|--------------|-------------|--------------|
| C1 | 0.0423 (10) | 0.0429 (10) | 0.0366 (9) | -0.0021 (8) | 0.0198 (8) | -0.0028 (8) |
| C2 | 0.0474 (11) | 0.0466 (11) | 0.0378 (10) | 0.0020 (9) | 0.0211 (8) | 0.0040 (8) |
| C3 | 0.0436 (11) | 0.0502 (12) | 0.0463 (11) | 0.0040 (9) | 0.0182 (9) | -0.0043 (9) |
| C4 | 0.0417 (11) | 0.0720 (16) | 0.0605 (13) | -0.0011 (11) | 0.0285 (10) | -0.0005 (12) |
| C5 | 0.0514 (12) | 0.0656 (15) | 0.0517 (12) | -0.0034 (11) | 0.0302 (10) | 0.0096 (11) |
| C6 | 0.0573 (15) | 0.088 (2) | 0.0773 (19) | 0.0229 (14) | 0.0215 (13) | 0.0161 (16) |
| C7 | 0.0378 (9) | 0.0423 (10) | 0.0407 (10) | 0.0032 (8) | 0.0220 (8) | 0.0025 (8) |
| C8 | 0.0663 (15) | 0.0905 (19) | 0.0618 (14) | 0.0410 (14) | 0.0465 (13) | 0.0314 (14) |
| C9 | 0.0796 (18) | 0.109 (2) | 0.0623 (15) | 0.0500 (17) | 0.0522 (14) | 0.0408 (16) |
| C10 | 0.0479 (11) | 0.0562 (13) | 0.0535 (12) | 0.0161 (10) | 0.0267 (10) | 0.0137 (10) |
| C11 | 0.0389 (9) | 0.0489 (12) | 0.0483 (11) | 0.0036 (8) | 0.0250 (8) | -0.0006 (9) |
| C12 | 0.0419 (10) | 0.0496 (11) | 0.0382 (9) | 0.0018 (8) | 0.0234 (8) | 0.0014 (8) |
| C13 | 0.0388 (9) | 0.0429 (10) | 0.0385 (10) | 0.0016 (8) | 0.0190 (8) | 0.0002 (8) |

| | | | | | | |
|----|-------------|-------------|-------------|-------------|-------------|-------------|
| N1 | 0.0435 (9) | 0.0499 (10) | 0.0422 (9) | 0.0014 (8) | 0.0221 (7) | 0.0053 (8) |
| N2 | 0.0508 (11) | 0.0753 (15) | 0.0609 (12) | 0.0146 (10) | 0.0354 (10) | 0.0203 (11) |
| O1 | 0.0433 (8) | 0.0731 (11) | 0.0479 (8) | 0.0088 (7) | 0.0252 (7) | 0.0157 (8) |
| O2 | 0.0471 (8) | 0.0666 (10) | 0.0483 (8) | 0.0169 (7) | 0.0279 (7) | 0.0115 (7) |
| O3 | 0.0717 (12) | 0.0929 (14) | 0.0660 (11) | 0.0431 (11) | 0.0412 (9) | 0.0318 (10) |

Geometric parameters (Å, °)

| | | | |
|------------|-------------|-------------|-------------|
| C1—N2 | 1.326 (3) | C7—C13 | 1.483 (3) |
| C1—N1 | 1.344 (3) | C8—C9 | 1.375 (3) |
| C1—C2 | 1.406 (3) | C8—H8 | 0.9300 |
| C2—C3 | 1.359 (3) | C9—C10 | 1.376 (3) |
| C2—H2 | 0.9300 | C9—H9 | 0.9300 |
| C3—C4 | 1.407 (3) | C10—O3 | 1.353 (3) |
| C3—C6 | 1.498 (3) | C10—C11 | 1.379 (3) |
| C4—C5 | 1.342 (3) | C11—C12 | 1.375 (3) |
| C4—H4 | 0.9300 | C11—H11 | 0.9300 |
| C5—N1 | 1.353 (3) | C12—H12 | 0.9300 |
| C5—H5 | 0.9300 | C13—O1 | 1.251 (2) |
| C6—H6A | 0.9600 | C13—O2 | 1.264 (2) |
| C6—H6B | 0.9600 | N1—H1 | 0.865 (10) |
| C6—H6C | 0.9600 | N2—H2A | 0.859 (10) |
| C7—C12 | 1.384 (3) | N2—H2B | 0.855 (10) |
| C7—C8 | 1.384 (3) | O3—H3 | 0.827 (10) |
| N2—C1—N1 | 117.89 (19) | C9—C8—H8 | 119.3 |
| N2—C1—C2 | 124.03 (19) | C7—C8—H8 | 119.3 |
| N1—C1—C2 | 118.07 (18) | C8—C9—C10 | 120.4 (2) |
| C3—C2—C1 | 121.14 (19) | C8—C9—H9 | 119.8 |
| C3—C2—H2 | 119.4 | C10—C9—H9 | 119.8 |
| C1—C2—H2 | 119.4 | O3—C10—C9 | 117.5 (2) |
| C2—C3—C4 | 118.3 (2) | O3—C10—C11 | 123.33 (19) |
| C2—C3—C6 | 121.5 (2) | C9—C10—C11 | 119.2 (2) |
| C4—C3—C6 | 120.3 (2) | C12—C11—C10 | 119.96 (18) |
| C5—C4—C3 | 119.7 (2) | C12—C11—H11 | 120.0 |
| C5—C4—H4 | 120.1 | C10—C11—H11 | 120.0 |
| C3—C4—H4 | 120.1 | C11—C12—C7 | 121.69 (18) |
| C4—C5—N1 | 121.2 (2) | C11—C12—H12 | 119.2 |
| C4—C5—H5 | 119.4 | C7—C12—H12 | 119.2 |
| N1—C5—H5 | 119.4 | O1—C13—O2 | 122.34 (18) |
| C3—C6—H6A | 109.5 | O1—C13—C7 | 118.69 (17) |
| C3—C6—H6B | 109.5 | O2—C13—C7 | 118.95 (17) |
| H6A—C6—H6B | 109.5 | C1—N1—C5 | 121.58 (19) |
| C3—C6—H6C | 109.5 | C1—N1—H1 | 123 (2) |
| H6A—C6—H6C | 109.5 | C5—N1—H1 | 115 (2) |
| H6B—C6—H6C | 109.5 | C1—N2—H2A | 118.8 (19) |
| C12—C7—C8 | 117.33 (18) | C1—N2—H2B | 118.6 (16) |
| C12—C7—C13 | 121.37 (17) | H2A—N2—H2B | 122 (2) |

| | | | |
|---------------|-------------|----------------|--------------|
| C8—C7—C13 | 121.29 (17) | C10—O3—H3 | 110 (2) |
| C9—C8—C7 | 121.4 (2) | | |
| N2—C1—C2—C3 | 177.9 (2) | O3—C10—C11—C12 | 179.2 (2) |
| N1—C1—C2—C3 | -1.7 (3) | C9—C10—C11—C12 | 0.1 (4) |
| C1—C2—C3—C4 | 0.5 (3) | C10—C11—C12—C7 | 2.6 (3) |
| C1—C2—C3—C6 | -178.7 (2) | C8—C7—C12—C11 | -3.0 (3) |
| C2—C3—C4—C5 | 1.0 (3) | C13—C7—C12—C11 | 177.11 (19) |
| C6—C3—C4—C5 | -179.8 (2) | C12—C7—C13—O1 | 10.0 (3) |
| C3—C4—C5—N1 | -1.4 (4) | C8—C7—C13—O1 | -169.9 (2) |
| C12—C7—C8—C9 | 0.8 (4) | C12—C7—C13—O2 | -168.28 (19) |
| C13—C7—C8—C9 | -179.3 (3) | C8—C7—C13—O2 | 11.9 (3) |
| C7—C8—C9—C10 | 1.8 (5) | N2—C1—N1—C5 | -178.3 (2) |
| C8—C9—C10—O3 | 178.6 (3) | C2—C1—N1—C5 | 1.3 (3) |
| C8—C9—C10—C11 | -2.2 (5) | C4—C5—N1—C1 | 0.2 (4) |

Hydrogen-bond geometry (Å, °)

| <i>D</i> —H... <i>A</i> | <i>D</i> —H | H... <i>A</i> | <i>D</i> ... <i>A</i> | <i>D</i> —H... <i>A</i> |
|---------------------------|-------------|---------------|-----------------------|-------------------------|
| N1—H1...O2 ⁱ | 0.87 (1) | 1.81 (1) | 2.666 (2) | 174 (3) |
| N2—H2A...O1 ⁱ | 0.86 (1) | 1.95 (1) | 2.806 (3) | 172 (3) |
| N2—H2B...O2 ⁱⁱ | 0.86 (1) | 2.05 (1) | 2.887 (3) | 167 (2) |
| O3—H3...O1 ⁱⁱⁱ | 0.83 (1) | 1.87 (1) | 2.677 (2) | 167 (3) |
| C6—H6C...O1 ^{iv} | 0.96 | 2.58 | 3.505 (4) | 161 |

Symmetry codes: (i) $-x+1, -y, -z+2$; (ii) $-x+1, y+1/2, -z+3/2$; (iii) $-x, y+1/2, -z+3/2$; (iv) $x, -y+1/2, z-1/2$.