



Received 12 January 2022

Accepted 13 January 2022

Edited by T. Ishikawa, Harima Institute, Japan

**Keywords:** coherent X-ray diffractive imaging (CXDI); free-electron lasers; single particles; XFEL

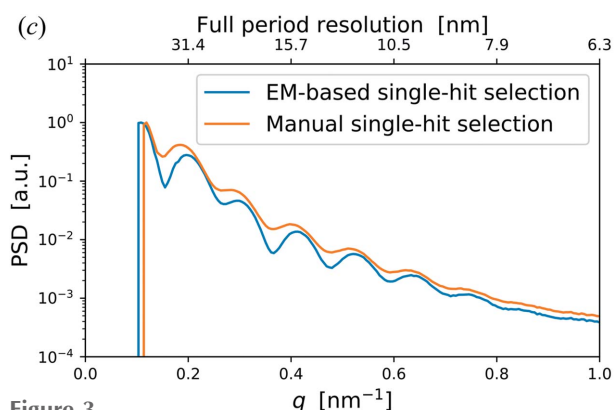
# An advanced workflow for single-particle imaging with the limited data at an X-ray free-electron laser. Corrigendum

**Dameli Assalauova,<sup>a</sup> Young Yong Kim,<sup>a</sup> Sergey Bobkov,<sup>b</sup> Ruslan Khubbutdinov,<sup>a,c</sup> Max Rose,<sup>a</sup> Roberto Alvarez,<sup>d,e</sup> Jakob Andreasson,<sup>f</sup> Eugeniu Balaur,<sup>g</sup> Alice Contreras,<sup>h,i</sup> Hasan DeMirci,<sup>j,k</sup> Luca Gelisio,<sup>l</sup> Janos Hajdu,<sup>f,m</sup> Mark S. Hunter,<sup>n</sup> Ruslan P. Kurta,<sup>o</sup> Haoyuan Li,<sup>p,n</sup> Matthew McFadden,<sup>i</sup> Reza Nazari,<sup>d,q</sup> Peter Schwander,<sup>r</sup> Anton Teslyuk,<sup>b,s</sup> Peter Walter,<sup>n</sup> P. Lourdu Xavier,<sup>l,n,t</sup> Chun Hong Yoon,<sup>n</sup> Sahba Zaare,<sup>d,n</sup> Viacheslav A. Ilyin,<sup>b,s</sup> Richard A. Kirian,<sup>d</sup> Brenda G. Hogue,<sup>h,i,u</sup> Andrew Aquila<sup>n,\*</sup> and Ivan A. Vartanyants<sup>a,c,\*</sup>**

<sup>a</sup>Deutsches Elektronen-Synchrotron DESY, Notkestraße 85, Hamburg, D-22607, Germany, <sup>b</sup>National Research Center 'Kurchatov Institute', Akademika Kurchatova pl. 1, Moscow, 123182 Russian Federation, <sup>c</sup>National Research Nuclear University MEPhI (Moscow Engineering Physics Institute), Kashirskoe sh. 31, Moscow, 115409, Russian Federation, <sup>d</sup>Department of Physics, Arizona State University, Tempe, Arizona AZ 85287, USA, <sup>e</sup>School of Mathematics and Statistical Sciences, Arizona State University, Tempe, Arizona AZ 85287, USA, <sup>f</sup>Institute of Physics, ELI Beamlines, Academy of Sciences of the Czech Republic, Prague, CZ-18221, Czech Republic, <sup>g</sup>Australian Research Council Centre of Excellence in Advanced Molecular Imaging, Department of Chemistry and Physics, La Trobe Institute for Molecular Science (LIMS), La Trobe University, Melbourne, Victoria 3086, Australia, <sup>h</sup>School of Life Sciences, Arizona State University, Tempe, Arizona AZ 85287, USA, <sup>i</sup>Biodesign Institute Center for Immunotherapy, Vaccines and Virotherapy, Arizona State University, Tempe, Arizona AZ 85287, USA, <sup>j</sup>Stanford PULSE Institute, SLAC National Accelerator Laboratory, 2575 Sand Hill Road, Menlo Park, CA 94025, USA, <sup>k</sup>Department of Molecular Biology and Genetics, Koc University, Istanbul, 34450, Turkey, <sup>l</sup>Center for Free Electron Laser Science (CFEL), DESY, Notkestraße 85, Hamburg, D-22607, Germany, <sup>m</sup>Laboratory of Molecular Biophysics, Department of Cell and Molecular Biology, Uppsala University, Husargatan 3, Uppsala, SE-75124, Sweden, <sup>n</sup>SLAC National Accelerator Laboratory, 2575 Sand Hill Road, Menlo Park, CA 94025, USA, <sup>o</sup>European XFEL, Holzkoppel 4, Schenefeld, D-22869, Germany, <sup>p</sup>Physics Department, Stanford University, 450 Jane Stanford Way, Stanford, CA 94305-2004, USA, <sup>q</sup>School for Engineering of Matter, Transport and Energy, Arizona State University, Tempe, AZ 85287, USA, <sup>r</sup>University of Wisconsin Milwaukee, Milwaukee WI 53211, USA, <sup>s</sup>Moscow Institute of Physics and Technology, Moscow, 141700, Russian Federation, <sup>t</sup>Max-Planck Institute for the Structure and Dynamics of Matter, Luruper Chaussee 149, Hamburg, D-22761, Germany, and <sup>u</sup>Biodesign Institute, Center for Applied Structural Discovery, Arizona State University, Tempe, AZ 85287, USA. \*Correspondence e-mail: aquila@slac.stanford.edu, ivan.vartanyants@desy.de

An error in Fig. 3(c) of the article by Assalauova *et al.* [IUCrJ (2020), 7, 1102–1113] is corrected.

In Fig. 3(c) of the article by Assalauova *et al.* (2020), the values of PSD function for the manual single-hit selection were not correct (see corrected figure below). This update does not affect any conclusions made in the original paper.



**Figure 3** Classification of diffraction patterns by EM clustering. (c) Averaged PSD functions for EM-based single-hit selection containing 1085 patterns (blue line) and for manual selection containing 1393 patterns (orange line).

## References

Assalauova, D. *et al.* (2020). IUCrJ, 7, 1102–1113.

