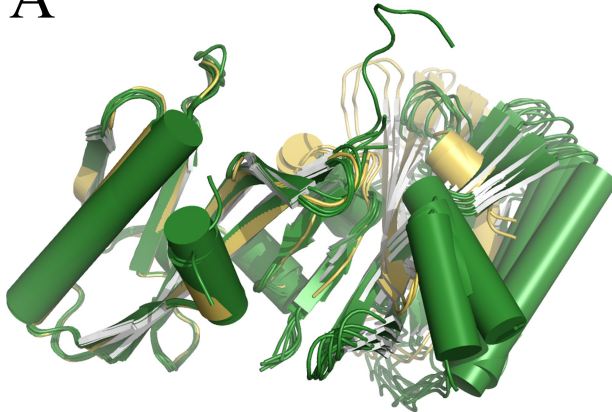
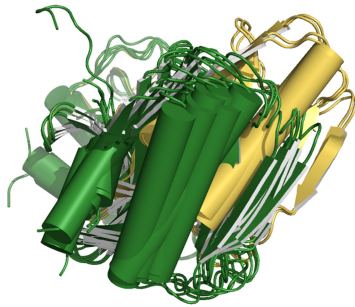


## Supplementary Material

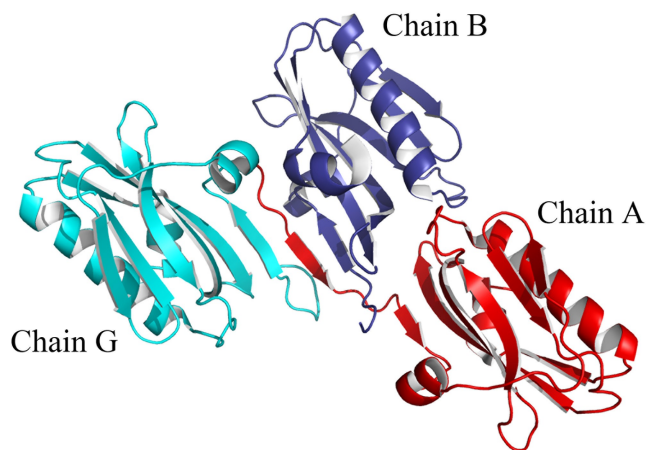
A



B



**Supplementary Figure 1: Variability of NS1 ED strand-strand interactions.** (A) Superposition of all NS1 ED strand-strand dimers aligned via the left-hand monomer of each pair to show the two distinct orientations observed. Dimers from 2GX9, 3O9Q, 3O9R, 3RVC, and two dimers from 3O9U (C and H, and E and G) are shown in dark green. Dimers formed by the A and F, and B and D chains of 3O9U adopt a different orientation, which is coloured gold. (B) Same superposition, viewed after a 90° rotation about a vertical axis.



**Supplementary Figure 2: Alternative  $\beta$ -strand addition interactions in the structure of an NS1 ED from A/California/07/09.** Chains A, B and G of 3M5R are shown in red, blue and cyan, respectively.