

Acta Crystallographica Section E

Structure Reports

Online

ISSN 1600-5368

4-(4-Pyridyl)pyridinium 3-amino-5-carboxy-2,4,6-triiodobenzoate–5-amino-2,4,6-triiodoisophthalic acid (1/1)

 Kou-Lin Zhang,^a Guo-Wang Diao^a and Seik Weng Ng^{b*}
^aCollege of Chemistry and Chemical Engineering, Yangzhou University, Yangzhou 225002, People's Republic of China, and ^bDepartment of Chemistry, University of Malaya, 50603 Kuala Lumpur, Malaysia

Correspondence e-mail: seikweng@um.edu.my

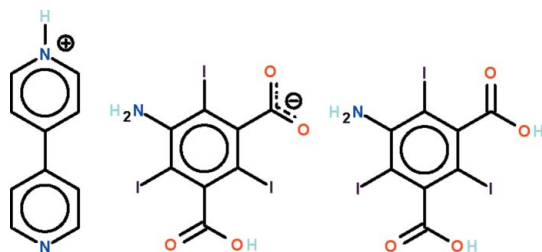
Received 6 October 2010; accepted 5 November 2010

 Key indicators: single-crystal X-ray study; $T = 295$ K; mean $\sigma(\text{C}-\text{C}) = 0.006$ Å; R factor = 0.032; wR factor = 0.082; data-to-parameter ratio = 17.5.

In the title ammonium carboxylate–carboxylic acid co-crystal, $\text{C}_{10}\text{H}_9\text{N}_2^+ \cdot \text{C}_8\text{H}_3\text{I}_3\text{NO}_4^- \cdot \text{C}_8\text{H}_4\text{I}_3\text{NO}_4$, the carboxylate anion and carboxylic acid molecule are linked by $\text{O}-\text{H} \cdots \text{O}$ and $\text{N}-\text{H} \cdots \text{O}$ hydrogen bonds to form a chain running along the c axis of the monoclinic unit cell. The chains are linked by pyridinium and pyridine $\text{N}-\text{H} \cdots \text{O}$ hydrogen bonds, generating a layer motif. $\text{O}-\text{H} \cdots \text{N}$ and $\text{O}-\text{H} \cdots \text{O}$ hydrogen bonds are also observed.

Related literature

For the crystal structure of 5-amino-2,4,6-triiodoisophthalic acid monohydrate, see: Beck & Sheldrick (2008).



Experimental

Crystal data

 $\text{C}_{10}\text{H}_9\text{N}_2^+ \cdot \text{C}_8\text{H}_3\text{I}_3\text{NO}_4^- \cdot \text{C}_8\text{H}_4\text{I}_3\text{NO}_4$
 $M_r = 1273.83$

 Monoclinic, $P2_1/c$
 $a = 7.7388$ (4) Å

 $b = 34.2377$ (19) Å
 $c = 13.0739$ (7) Å
 $\beta = 106.506$ (1)°
 $V = 3321.3$ (3) Å³
 $Z = 4$

 Mo $K\alpha$ radiation
 $\mu = 5.66$ mm⁻¹
 $T = 295$ K
 $0.08 \times 0.06 \times 0.04$ mm

Data collection

 Bruker SMART APEX
 diffractometer
 Absorption correction: multi-scan
 (SADABS; Sheldrick, 1996)
 $T_{\min} = 0.660$, $T_{\max} = 0.805$

 28196 measured reflections
 7506 independent reflections
 6365 reflections with $I > 2\sigma(I)$
 $R_{\text{int}} = 0.037$

Refinement

 $R[F^2 > 2\sigma(F^2)] = 0.032$
 $wR(F^2) = 0.082$
 $S = 1.03$
 7506 reflections
 429 parameters
 8 restraints

 H atoms treated by a mixture of
 independent and constrained
 refinement

 $\Delta\rho_{\text{max}} = 1.25$ e Å⁻³
 $\Delta\rho_{\text{min}} = -1.26$ e Å⁻³

Table 1

Hydrogen-bond geometry (Å, °).

$D-\text{H} \cdots A$	$D-\text{H}$	$\text{H} \cdots A$	$D \cdots A$	$D-\text{H} \cdots A$
$\text{N1}-\text{H11} \cdots \text{O8}^{\text{i}}$	0.88 (1)	2.22 (4)	2.946 (6)	141 (5)
$\text{N3}-\text{H3} \cdots \text{O1}$	0.88 (1)	1.78 (1)	2.651 (5)	174 (6)
$\text{O3}-\text{H3o} \cdots \text{N4}^{\text{ii}}$	0.84 (1)	1.75 (2)	2.585 (5)	171 (9)
$\text{O5}-\text{H5o} \cdots \text{O1}$	0.84 (1)	1.77 (3)	2.568 (4)	159 (6)
$\text{O7}-\text{H7o} \cdots \text{O2}^{\text{iii}}$	0.84 (1)	1.84 (1)	2.679 (5)	174 (7)

 Symmetry codes: (i) $x - 1, y, z - 1$; (ii) $-x + 2, y + \frac{1}{2}, -z + \frac{1}{2}$; (iii) $x, y, z + 1$.

Data collection: *APEX2* (Bruker, 2007); cell refinement: *SAINT* (Bruker, 2007); data reduction: *SAINT*; program(s) used to solve structure: *SHELXS97* (Sheldrick, 2008); program(s) used to refine structure: *SHELXL97* (Sheldrick, 2008); molecular graphics: *X-SEED* (Barbour, 2001); software used to prepare material for publication: *pubCIF* (Westrip, 2010).

We thank the National Natural Science Foundation of China (grant No. 20773107), Yangzhou University and the University of Malaya for supporting this study.

Supplementary data and figures for this paper are available from the IUCr electronic archives (Reference: NK2065).

References

- Barbour, L. J. (2001). *J. Supramol. Chem.* **1**, 189–191.
 Beck, T. & Sheldrick, G. M. (2008). *Acta Cryst.* **E64**, o1286.
 Bruker (2007). *APEX2* and *SAINT*. Bruker AXS Inc., Madison, Wisconsin, USA.
 Sheldrick, G. M. (1996). *SADABS*. University of Göttingen, Germany.
 Sheldrick, G. M. (2008). *Acta Cryst.* **A64**, 112–122.
 Westrip, S. P. (2010). *J. Appl. Cryst.* **43**, 920–925.

supporting information

Acta Cryst. (2010). E66, o3165 [https://doi.org/10.1107/S1600536810045514]

4-(4-Pyridyl)pyridinium 3-amino-5-carboxy-2,4,6-triiodobenzoate–5-amino-2,4,6-triiodoisophthalic acid (1/1)

Kou-Lin Zhang, Guo-Wang Diao and Seik Weng Ng

S1. Comment

5-Amino-2,4,6-triiodoisophthalic acid exists as a monohydrated compound for which the acid and water molecules are linked by extensive O–H \cdots O, O–H \cdots N and N–H \cdots O hydrogen bonds to form a three-dimensional network (Beck & Sheldrick, 2008). The acid furnishes a small number of coordination compounds. The attempt to synthesize a cadmium derivative that can be linked by 4,4'-bipyridine gave instead the co-crystal, C₁₀H₉N₂⁺C₈H₃NO₄I₃⁻·C₈H₄NO₄I₃ (Scheme I, Fig. 1).

The carboxylate anion and carboxylic acid are linked by O–H \cdots O and N–H \cdots O hydrogen bonds to form a chain running along the *c*-axis of the monoclinic unit cell. The chains are linked by N_{pyridinium}–H \cdots O and N_{pyridyl}–H \cdots O hydrogen bonds to generate a layer motif (Fig. 2, Table 1).

S2. Experimental

An aqueous solution of cadmium dichloride 2.5 hydrate (0.023 g, 0.1 mmol) in water (5 ml) was added to a mixture of 5-amino-2,4,6-triiodoisophthalic acid (0.056 g, 0.1 mmol) in water (5 ml) and sodium hydroxide (0.2 ml, 0.5 M). To the solution was added 4,4'-bipyridine (0.016 g, 0.1 mmol) in water (5 ml). The solution was filed; slow evaporation yielded deep yellow crystals were collected (30% yield). CH&N elemental analysis. Calc. for C₂₆H₁₆I₆N₄O₈: C 24.51, H 1.27, N 4.43%; Found: C, 24.43; H, 1.29; N, 4.50%.

S3. Refinement

Carbon-bound H-atoms were placed in calculated positions (C–H 0.93 Å) and were included in the refinement in the riding model approximation, with *U*(H) set to 1.2*U*(C).

The amino and acid H-atoms were located in a difference Fourier map, and were refined with distance restraints of N–H 0.88±0.01 and O–H 0.84±0.01 Å; their temperature factors were refined.

The final difference Fourier map had a peak in the vicinity of I5 and a hole in the vicinity of I3.

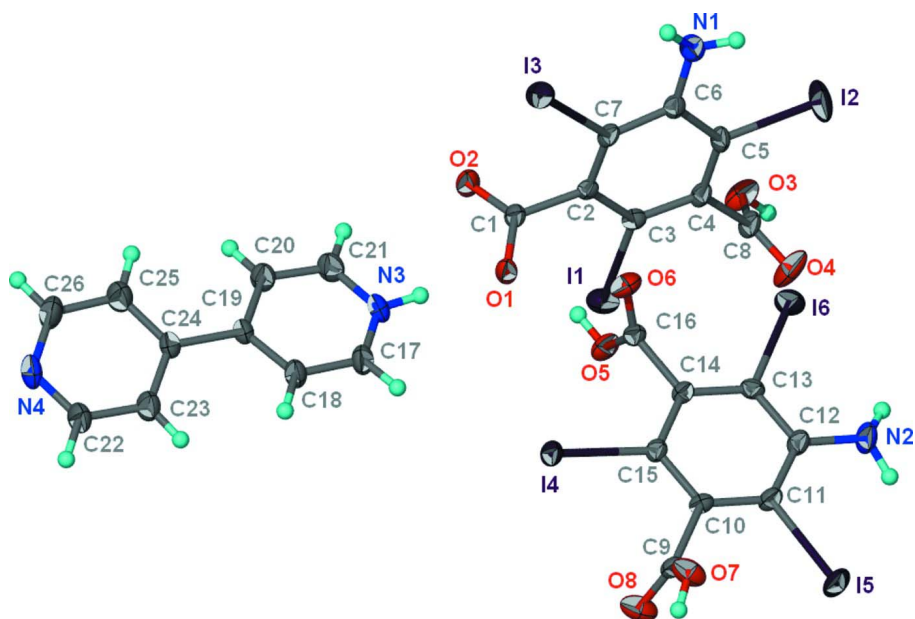


Figure 1

Displacement ellipsoid plot (Barbour, 2001) of $C_{10}H_9N_2^+ \cdot C_8H_3I_3NO_4I_3^- \cdot C_8H_4NO_4I_3$ at the 50% probability level; hydrogen atoms are drawn as spheres of arbitrary radius.

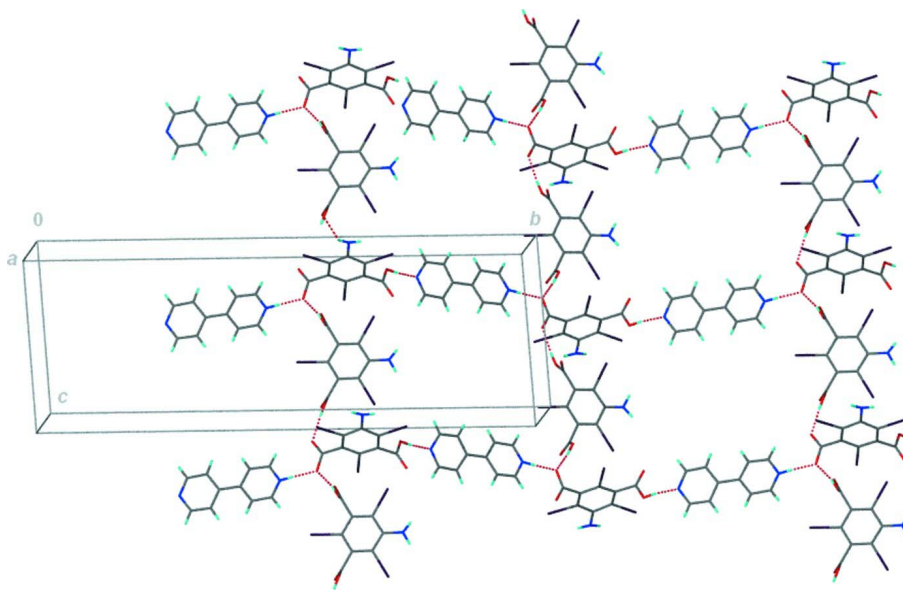


Figure 2

The hydrogen-bonded layer structure. Each amino group forms only one hydrogen bond; the weaker hydrogen bond is not shown.

4-(4-Pyridyl)pyridinium 3-amino-5-carboxy-2,4,6-triiodobenzoate–5-amino-2,4,6-triiodoisophthalic acid (1/1)

Crystal data

$C_{10}H_9N_2^+ \cdot C_8H_3I_3NO_4I_3^- \cdot C_8H_4I_3NO_4$
 $M_r = 1273.83$

Monoclinic, $P2_1/c$
Hall symbol: -P 2ybc

$a = 7.7388$ (4) Å
 $b = 34.2377$ (19) Å
 $c = 13.0739$ (7) Å
 $\beta = 106.506$ (1)°
 $V = 3321.3$ (3) Å³
 $Z = 4$
 $F(000) = 2328$
 $D_x = 2.547$ Mg m⁻³

Mo $K\alpha$ radiation, $\lambda = 0.71073$ Å
 Cell parameters from 9939 reflections
 $\theta = 2.4$ – 27.4 °
 $\mu = 5.66$ mm⁻¹
 $T = 295$ K
 Prism, yellow
 $0.08 \times 0.06 \times 0.04$ mm

Data collection

Bruker SMART APEX
 diffractometer
 Radiation source: fine-focus sealed tube
 Graphite monochromator
 ω scans
 Absorption correction: multi-scan
 (SADABS; Sheldrick, 1996)
 $T_{\min} = 0.660$, $T_{\max} = 0.805$

28196 measured reflections
 7506 independent reflections
 6365 reflections with $I > 2\sigma(I)$
 $R_{\text{int}} = 0.037$
 $\theta_{\max} = 27.5$ °, $\theta_{\min} = 1.7$ °
 $h = -9 \rightarrow 9$
 $k = -44 \rightarrow 44$
 $l = -16 \rightarrow 16$

Refinement

Refinement on F^2
 Least-squares matrix: full
 $R[F^2 > 2\sigma(F^2)] = 0.032$
 $wR(F^2) = 0.082$
 $S = 1.03$
 7506 reflections
 429 parameters
 8 restraints
 Primary atom site location: structure-invariant
 direct methods

Secondary atom site location: difference Fourier
 map
 Hydrogen site location: inferred from
 neighbouring sites
 H atoms treated by a mixture of independent
 and constrained refinement
 $w = 1/[\sigma^2(F_o^2) + (0.0387P)^2 + 6.6421P]$
 where $P = (F_o^2 + 2F_c^2)/3$
 $(\Delta/\sigma)_{\max} = 0.001$
 $\Delta\rho_{\max} = 1.25$ e Å⁻³
 $\Delta\rho_{\min} = -1.26$ e Å⁻³

Fractional atomic coordinates and isotropic or equivalent isotropic displacement parameters (Å²)

	<i>x</i>	<i>y</i>	<i>z</i>	$U_{\text{iso}}^*/U_{\text{eq}}$
I1	0.89589 (4)	0.633599 (10)	0.26091 (3)	0.03827 (9)
I2	0.17486 (6)	0.713602 (10)	0.08490 (4)	0.05879 (13)
I3	0.22245 (5)	0.537807 (9)	0.07851 (3)	0.03820 (9)
I4	0.63572 (4)	0.521651 (8)	0.65077 (2)	0.03066 (8)
I5	0.57056 (6)	0.666532 (10)	0.90690 (3)	0.04259 (10)
I6	0.36084 (5)	0.672374 (10)	0.42509 (3)	0.04230 (10)
O1	0.6872 (5)	0.54473 (9)	0.2775 (2)	0.0315 (7)
O2	0.6823 (5)	0.54041 (10)	0.1070 (3)	0.0370 (8)
O3	0.6689 (6)	0.71617 (11)	0.1148 (3)	0.0430 (9)
H3O	0.724 (12)	0.7376 (14)	0.130 (7)	0.12 (4)*
O4	0.6193 (7)	0.72189 (11)	0.2738 (3)	0.0577 (12)
O5	0.6413 (5)	0.58392 (11)	0.4353 (3)	0.0368 (8)
H5O	0.628 (8)	0.5720 (16)	0.377 (3)	0.055 (19)*
O6	0.3505 (5)	0.56703 (11)	0.4066 (3)	0.0432 (9)
O7	0.5332 (5)	0.56640 (12)	0.9082 (3)	0.0394 (8)
H7O	0.575 (9)	0.5570 (19)	0.970 (2)	0.07 (2)*
O8	0.8114 (5)	0.56830 (13)	0.8926 (3)	0.0449 (9)

N1	0.0653 (6)	0.62476 (12)	0.0256 (4)	0.0362 (9)
H11	0.004 (7)	0.6029 (9)	0.018 (4)	0.045 (16)*
H12	-0.001 (7)	0.6455 (11)	0.029 (5)	0.048 (17)*
N2	0.4185 (7)	0.69823 (12)	0.6687 (4)	0.0423 (11)
H21	0.461 (8)	0.7106 (16)	0.730 (3)	0.052 (18)*
H22	0.412 (8)	0.7143 (14)	0.615 (3)	0.048 (17)*
N3	0.8284 (5)	0.47376 (12)	0.3134 (3)	0.0324 (9)
H3	0.787 (8)	0.4976 (7)	0.299 (5)	0.055 (18)*
N4	1.1535 (6)	0.28111 (12)	0.3578 (4)	0.0399 (10)
C1	0.6421 (6)	0.55702 (12)	0.1815 (3)	0.0255 (9)
C2	0.5326 (6)	0.59425 (12)	0.1600 (3)	0.0228 (9)
C3	0.6155 (6)	0.63055 (12)	0.1880 (3)	0.0241 (9)
C4	0.5151 (6)	0.66494 (12)	0.1677 (3)	0.0258 (9)
C5	0.3306 (6)	0.66243 (12)	0.1171 (4)	0.0263 (9)
C6	0.2431 (6)	0.62650 (12)	0.0846 (3)	0.0262 (9)
C7	0.3500 (6)	0.59272 (12)	0.1111 (3)	0.0248 (9)
C8	0.6070 (7)	0.70421 (13)	0.1925 (4)	0.0315 (10)
C9	0.6552 (6)	0.57584 (13)	0.8604 (3)	0.0256 (9)
C10	0.5792 (6)	0.59878 (13)	0.7573 (3)	0.0230 (9)
C11	0.5321 (7)	0.63773 (13)	0.7594 (3)	0.0281 (9)
C12	0.4688 (6)	0.66010 (13)	0.6662 (4)	0.0282 (9)
C13	0.4532 (6)	0.64080 (13)	0.5687 (3)	0.0256 (9)
C14	0.5027 (6)	0.60201 (12)	0.5647 (3)	0.0228 (8)
C15	0.5677 (6)	0.58054 (12)	0.6596 (3)	0.0244 (9)
C16	0.4885 (6)	0.58222 (13)	0.4591 (3)	0.0267 (9)
C17	0.8615 (7)	0.45571 (14)	0.4059 (4)	0.0361 (11)
H17	0.8434	0.4689	0.4641	0.043*
C18	0.9221 (7)	0.41776 (14)	0.4184 (4)	0.0329 (10)
H18	0.9461	0.4056	0.4846	0.040*
C19	0.9471 (6)	0.39770 (12)	0.3306 (4)	0.0258 (9)
C20	0.9103 (7)	0.41793 (14)	0.2341 (4)	0.0337 (11)
H20	0.9257	0.4057	0.1737	0.040*
C21	0.8514 (7)	0.45584 (15)	0.2286 (4)	0.0375 (11)
H21A	0.8271	0.4692	0.1641	0.045*
C22	1.1572 (7)	0.30185 (14)	0.4440 (4)	0.0393 (12)
H22A	1.2063	0.2907	0.5109	0.047*
C23	1.0905 (7)	0.33952 (14)	0.4377 (4)	0.0381 (12)
H23	1.0955	0.3532	0.4999	0.046*
C24	1.0163 (6)	0.35702 (13)	0.3398 (4)	0.0273 (9)
C25	1.0087 (9)	0.33460 (16)	0.2503 (5)	0.0474 (14)
H25	0.9564	0.3446	0.1823	0.057*
C26	1.0804 (9)	0.29694 (16)	0.2632 (5)	0.0505 (15)
H26	1.0766	0.2823	0.2026	0.061*

Atomic displacement parameters (\AA^2)

	U^{11}	U^{22}	U^{33}	U^{12}	U^{13}	U^{23}
II	0.03160 (17)	0.04546 (19)	0.03463 (18)	-0.00668 (14)	0.00433 (13)	0.00376 (14)

I2	0.0485 (2)	0.02261 (17)	0.1008 (4)	0.00977 (15)	0.0140 (2)	0.00154 (18)
I3	0.0456 (2)	0.02220 (15)	0.03956 (19)	-0.00873 (13)	0.00046 (15)	0.00157 (12)
I4	0.04117 (18)	0.02040 (14)	0.02876 (16)	0.00191 (12)	0.00727 (13)	-0.00067 (11)
I5	0.0665 (2)	0.03696 (18)	0.02578 (17)	0.00401 (16)	0.01550 (16)	-0.00919 (13)
I6	0.0586 (2)	0.03503 (18)	0.02813 (17)	0.00338 (15)	0.00399 (15)	0.00980 (13)
O1	0.048 (2)	0.0260 (16)	0.0220 (16)	0.0110 (14)	0.0115 (14)	0.0039 (12)
O2	0.055 (2)	0.0356 (19)	0.0235 (16)	0.0134 (16)	0.0155 (16)	0.0004 (14)
O3	0.063 (3)	0.034 (2)	0.036 (2)	-0.0227 (18)	0.0215 (18)	-0.0058 (16)
O4	0.106 (4)	0.032 (2)	0.041 (2)	-0.021 (2)	0.031 (2)	-0.0154 (17)
O5	0.048 (2)	0.040 (2)	0.0256 (18)	-0.0024 (16)	0.0162 (16)	-0.0078 (15)
O6	0.047 (2)	0.044 (2)	0.0331 (19)	-0.0068 (17)	0.0031 (17)	-0.0128 (16)
O7	0.0347 (19)	0.054 (2)	0.033 (2)	0.0066 (16)	0.0138 (16)	0.0192 (17)
O8	0.0283 (19)	0.066 (3)	0.037 (2)	0.0010 (17)	0.0044 (15)	0.0109 (18)
N1	0.031 (2)	0.027 (2)	0.044 (2)	-0.0006 (17)	0.0019 (19)	-0.0031 (19)
N2	0.073 (3)	0.020 (2)	0.035 (3)	0.011 (2)	0.017 (2)	0.0015 (18)
N3	0.031 (2)	0.027 (2)	0.040 (2)	0.0103 (17)	0.0100 (18)	0.0067 (17)
N4	0.048 (3)	0.024 (2)	0.052 (3)	0.0102 (18)	0.020 (2)	0.0028 (19)
C1	0.032 (2)	0.0177 (19)	0.026 (2)	-0.0002 (17)	0.0067 (18)	0.0001 (17)
C2	0.035 (2)	0.0186 (19)	0.0145 (19)	0.0001 (17)	0.0065 (17)	0.0022 (15)
C3	0.025 (2)	0.028 (2)	0.020 (2)	-0.0031 (17)	0.0066 (17)	-0.0006 (17)
C4	0.040 (3)	0.0163 (19)	0.023 (2)	-0.0027 (17)	0.0116 (19)	-0.0006 (16)
C5	0.034 (2)	0.0162 (19)	0.030 (2)	0.0028 (17)	0.0112 (19)	0.0021 (17)
C6	0.035 (2)	0.023 (2)	0.022 (2)	0.0023 (18)	0.0102 (18)	0.0008 (17)
C7	0.035 (2)	0.0157 (18)	0.023 (2)	-0.0047 (17)	0.0080 (18)	-0.0014 (16)
C8	0.044 (3)	0.018 (2)	0.033 (2)	-0.0019 (19)	0.011 (2)	-0.0022 (18)
C9	0.033 (3)	0.025 (2)	0.019 (2)	-0.0019 (18)	0.0067 (18)	-0.0033 (16)
C10	0.024 (2)	0.027 (2)	0.018 (2)	-0.0044 (17)	0.0061 (16)	-0.0021 (16)
C11	0.039 (3)	0.025 (2)	0.021 (2)	-0.0028 (19)	0.0092 (19)	-0.0037 (17)
C12	0.034 (3)	0.020 (2)	0.031 (2)	-0.0035 (18)	0.009 (2)	-0.0039 (17)
C13	0.030 (2)	0.027 (2)	0.019 (2)	0.0010 (18)	0.0044 (17)	0.0050 (17)
C14	0.028 (2)	0.0212 (19)	0.021 (2)	-0.0026 (16)	0.0088 (17)	-0.0015 (16)
C15	0.028 (2)	0.020 (2)	0.025 (2)	-0.0013 (16)	0.0073 (18)	-0.0020 (17)
C16	0.034 (3)	0.023 (2)	0.021 (2)	0.0009 (18)	0.0050 (19)	0.0002 (17)
C17	0.041 (3)	0.030 (2)	0.039 (3)	0.011 (2)	0.015 (2)	-0.001 (2)
C18	0.043 (3)	0.026 (2)	0.032 (2)	0.010 (2)	0.015 (2)	0.0045 (19)
C19	0.027 (2)	0.022 (2)	0.029 (2)	0.0044 (17)	0.0088 (18)	0.0023 (17)
C20	0.044 (3)	0.027 (2)	0.033 (3)	0.003 (2)	0.015 (2)	0.0045 (19)
C21	0.046 (3)	0.035 (3)	0.034 (3)	0.007 (2)	0.015 (2)	0.008 (2)
C22	0.049 (3)	0.026 (2)	0.042 (3)	0.008 (2)	0.010 (2)	0.004 (2)
C23	0.050 (3)	0.027 (2)	0.038 (3)	0.007 (2)	0.014 (2)	0.003 (2)
C24	0.026 (2)	0.025 (2)	0.032 (2)	0.0052 (17)	0.0108 (19)	0.0011 (18)
C25	0.064 (4)	0.037 (3)	0.039 (3)	0.015 (3)	0.011 (3)	0.004 (2)
C26	0.078 (4)	0.033 (3)	0.041 (3)	0.016 (3)	0.018 (3)	-0.004 (2)

Geometric parameters (Å, °)

I1—C3	2.110 (4)	C3—C4	1.394 (6)
I2—C5	2.100 (4)	C4—C5	1.395 (7)

I3—C7	2.110 (4)	C4—C8	1.513 (6)
I4—C15	2.095 (4)	C5—C6	1.410 (6)
I5—C11	2.111 (4)	C6—C7	1.407 (6)
I6—C13	2.108 (4)	C9—C10	1.526 (6)
O1—C1	1.276 (5)	C10—C11	1.385 (6)
O2—C1	1.241 (5)	C10—C15	1.402 (6)
O3—C8	1.307 (6)	C11—C12	1.404 (6)
O3—H3O	0.84 (1)	C12—C13	1.409 (6)
O4—C8	1.203 (6)	C13—C14	1.388 (6)
O5—C16	1.307 (6)	C14—C15	1.406 (6)
O5—H5O	0.84 (1)	C14—C16	1.513 (6)
O6—C16	1.211 (6)	C17—C18	1.375 (6)
O7—C9	1.313 (6)	C17—H17	0.9300
O7—H7O	0.84 (1)	C18—C19	1.398 (6)
O8—C9	1.190 (6)	C18—H18	0.9300
N1—C6	1.374 (6)	C19—C20	1.396 (6)
N1—H11	0.88 (1)	C19—C24	1.485 (6)
N1—H12	0.88 (1)	C20—C21	1.371 (7)
N2—C12	1.366 (6)	C20—H20	0.9300
N2—H21	0.88 (1)	C21—H21A	0.9300
N2—H22	0.88 (1)	C22—C23	1.383 (7)
N3—C17	1.316 (6)	C22—H22A	0.9300
N3—C21	1.323 (7)	C23—C24	1.382 (7)
N3—H3	0.878 (10)	C23—H23	0.9300
N4—C26	1.322 (7)	C24—C25	1.387 (7)
N4—C22	1.325 (7)	C25—C26	1.395 (7)
C1—C2	1.512 (6)	C25—H25	0.9300
C2—C7	1.376 (6)	C26—H26	0.9300
C2—C3	1.399 (6)		
C8—O3—H3O	111 (6)	N2—C12—C11	122.2 (4)
C16—O5—H5O	108 (4)	N2—C12—C13	121.2 (4)
C9—O7—H7O	115 (5)	C11—C12—C13	116.6 (4)
C6—N1—H11	122 (4)	C14—C13—C12	122.0 (4)
C6—N1—H12	116 (4)	C14—C13—I6	119.0 (3)
H11—N1—H12	113 (6)	C12—C13—I6	119.0 (3)
C12—N2—H21	117 (4)	C13—C14—C15	120.0 (4)
C12—N2—H22	122 (4)	C13—C14—C16	120.9 (4)
H21—N2—H22	110 (6)	C15—C14—C16	119.1 (4)
C17—N3—C21	121.0 (4)	C10—C15—C14	119.0 (4)
C17—N3—H3	127 (4)	C10—C15—I4	121.8 (3)
C21—N3—H3	112 (4)	C14—C15—I4	119.1 (3)
C26—N4—C22	118.5 (4)	O6—C16—O5	126.6 (4)
O2—C1—O1	124.1 (4)	O6—C16—C14	122.2 (4)
O2—C1—C2	119.6 (4)	O5—C16—C14	111.2 (4)
O1—C1—C2	116.3 (4)	N3—C17—C18	121.6 (5)
C7—C2—C3	119.3 (4)	N3—C17—H17	119.2
C7—C2—C1	120.1 (4)	C18—C17—H17	119.2

C3—C2—C1	120.6 (4)	C17—C18—C19	119.2 (4)
C4—C3—C2	120.7 (4)	C17—C18—H18	120.4
C4—C3—I1	119.4 (3)	C19—C18—H18	120.4
C2—C3—I1	119.9 (3)	C20—C19—C18	117.3 (4)
C3—C4—C5	118.6 (4)	C20—C19—C24	121.0 (4)
C3—C4—C8	120.5 (4)	C18—C19—C24	121.7 (4)
C5—C4—C8	120.8 (4)	C21—C20—C19	119.8 (4)
C4—C5—C6	122.4 (4)	C21—C20—H20	120.1
C4—C5—I2	119.7 (3)	C19—C20—H20	120.1
C6—C5—I2	117.9 (3)	N3—C21—C20	121.1 (5)
N1—C6—C7	121.8 (4)	N3—C21—H21A	119.4
N1—C6—C5	121.7 (4)	C20—C21—H21A	119.4
C7—C6—C5	116.4 (4)	N4—C22—C23	122.1 (5)
C2—C7—C6	122.5 (4)	N4—C22—H22A	119.0
C2—C7—I3	119.2 (3)	C23—C22—H22A	119.0
C6—C7—I3	118.3 (3)	C24—C23—C22	120.6 (5)
O4—C8—O3	125.1 (4)	C24—C23—H23	119.7
O4—C8—C4	123.4 (4)	C22—C23—H23	119.7
O3—C8—C4	111.4 (4)	C23—C24—C25	116.6 (4)
O8—C9—O7	125.0 (4)	C23—C24—C19	121.8 (4)
O8—C9—C10	121.5 (4)	C25—C24—C19	121.5 (4)
O7—C9—C10	113.5 (4)	C24—C25—C26	119.3 (5)
C11—C10—C15	119.9 (4)	C24—C25—H25	120.3
C11—C10—C9	121.0 (4)	C26—C25—H25	120.3
C15—C10—C9	119.0 (4)	N4—C26—C25	122.8 (5)
C10—C11—C12	122.5 (4)	N4—C26—H26	118.6
C10—C11—I5	119.9 (3)	C25—C26—H26	118.6
C12—C11—I5	117.5 (3)		
O2—C1—C2—C7	76.5 (6)	C10—C11—C12—C13	0.6 (7)
O1—C1—C2—C7	-103.4 (5)	I5—C11—C12—C13	176.7 (3)
O2—C1—C2—C3	-102.6 (5)	N2—C12—C13—C14	-179.6 (5)
O1—C1—C2—C3	77.5 (5)	C11—C12—C13—C14	-1.9 (7)
C7—C2—C3—C4	0.5 (6)	N2—C12—C13—I6	2.7 (6)
C1—C2—C3—C4	179.6 (4)	C11—C12—C13—I6	-179.6 (3)
C7—C2—C3—I1	-179.1 (3)	C12—C13—C14—C15	1.2 (7)
C1—C2—C3—I1	0.0 (5)	I6—C13—C14—C15	178.9 (3)
C2—C3—C4—C5	-1.2 (6)	C12—C13—C14—C16	-178.6 (4)
I1—C3—C4—C5	178.4 (3)	I6—C13—C14—C16	-1.0 (6)
C2—C3—C4—C8	-176.6 (4)	C11—C10—C15—C14	-2.0 (6)
I1—C3—C4—C8	3.0 (5)	C9—C10—C15—C14	-178.1 (4)
C3—C4—C5—C6	-0.8 (7)	C11—C10—C15—I4	-179.7 (3)
C8—C4—C5—C6	174.5 (4)	C9—C10—C15—I4	4.2 (6)
C3—C4—C5—I2	-179.9 (3)	C13—C14—C15—C10	0.8 (6)
C8—C4—C5—I2	-4.5 (6)	C16—C14—C15—C10	-179.4 (4)
C4—C5—C6—N1	-173.5 (4)	C13—C14—C15—I4	178.6 (3)
I2—C5—C6—N1	5.6 (6)	C16—C14—C15—I4	-1.6 (5)
C4—C5—C6—C7	3.3 (6)	C13—C14—C16—O6	-86.0 (6)

I2—C5—C6—C7	-177.6 (3)	C15—C14—C16—O6	94.1 (6)
C3—C2—C7—C6	2.2 (6)	C13—C14—C16—O5	94.3 (5)
C1—C2—C7—C6	-176.9 (4)	C15—C14—C16—O5	-85.6 (5)
C3—C2—C7—I3	-175.9 (3)	C21—N3—C17—C18	0.5 (8)
C1—C2—C7—I3	5.1 (5)	N3—C17—C18—C19	-0.8 (8)
N1—C6—C7—C2	172.8 (4)	C17—C18—C19—C20	0.7 (7)
C5—C6—C7—C2	-4.0 (6)	C17—C18—C19—C24	178.6 (5)
N1—C6—C7—I3	-9.1 (6)	C18—C19—C20—C21	-0.3 (7)
C5—C6—C7—I3	174.0 (3)	C24—C19—C20—C21	-178.2 (5)
C3—C4—C8—O4	-96.2 (6)	C17—N3—C21—C20	0.0 (8)
C5—C4—C8—O4	88.5 (7)	C19—C20—C21—N3	0.0 (8)
C3—C4—C8—O3	84.2 (5)	C26—N4—C22—C23	-1.3 (9)
C5—C4—C8—O3	-91.1 (5)	N4—C22—C23—C24	0.1 (9)
O8—C9—C10—C11	-104.2 (6)	C22—C23—C24—C25	1.6 (8)
O7—C9—C10—C11	74.8 (5)	C22—C23—C24—C19	-178.7 (5)
O8—C9—C10—C15	71.9 (6)	C20—C19—C24—C23	165.6 (5)
O7—C9—C10—C15	-109.2 (5)	C18—C19—C24—C23	-12.2 (7)
C15—C10—C11—C12	1.3 (7)	C20—C19—C24—C25	-14.8 (7)
C9—C10—C11—C12	177.3 (4)	C18—C19—C24—C25	167.4 (5)
C15—C10—C11—I5	-174.7 (3)	C23—C24—C25—C26	-2.2 (9)
C9—C10—C11—I5	1.3 (6)	C19—C24—C25—C26	178.1 (5)
C10—C11—C12—N2	178.4 (5)	C22—N4—C26—C25	0.6 (9)
I5—C11—C12—N2	-5.5 (6)	C24—C25—C26—N4	1.2 (10)

Hydrogen-bond geometry (Å, °)

<i>D</i> —H... <i>A</i>	<i>D</i> —H	H... <i>A</i>	<i>D</i> ... <i>A</i>	<i>D</i> —H... <i>A</i>
N1—H11...O8 ⁱ	0.88 (1)	2.22 (4)	2.946 (6)	141 (5)
N3—H3...O1	0.88 (1)	1.78 (1)	2.651 (5)	174 (6)
O3—H3 _o ...N4 ⁱⁱ	0.84 (1)	1.75 (2)	2.585 (5)	171 (9)
O5—H5 _o ...O1	0.84 (1)	1.77 (3)	2.568 (4)	159 (6)
O7—H7 _o ...O2 ⁱⁱⁱ	0.84 (1)	1.84 (1)	2.679 (5)	174 (7)

Symmetry codes: (i) $x-1, y, z-1$; (ii) $-x+2, y+1/2, -z+1/2$; (iii) $x, y, z+1$.